

FARM EQUIPMENT

NI 323 corn picker, very good, \$3,000 or Offer NH 26 blower, \$575 Bucks Co 215-847-2619

Oliver transport disc, 13'6" IHC 540 4-B 3PH plows, IHC 311 2PH 3-B plows, IHC 2001 loader, MF 2-section 3PH rotary hoe IHC 4-Row rear mount 2PH cultivator, like new Lycorning Co 717 547-6340

Toro 76" reel mower, \$475., Lely spreader, model W \$970 215-542-7980 or 215-646-9057

One new White 6 row air corn planter, dry fertilizer, no till attachment, insecticide attachment, hyd markers, 1984 left over at a sacrifice price One new White 275 tractor w/rear power adjust wheels, 75 hp, at a very special price, priced to go Handwork Bros Service Center, Rt 1, Slatington, Pa 215-767-5946

TIRES- 11L15 Implement, 8 ply \$41.50. D J Implement 717-949-3074

Rino Model 62 10'6" tandem disc, like new, used less than 50 acres 215-965-6363

Pequea Tedders, 7' \$1,355. 9' \$1,495. setup and tires, Pequea Running Gears, 8 ton \$633. 10 ton \$686. Zimmerman Running Gears, 8 ton \$629. 10 ton \$826. Zimmerman Elevators, 32' \$1,572. 40' \$1,775 Others Available D J Implement 717-949-3074

New style 2640, hi/low, 700 hrs., \$14,500. 215-267-3248

NH 1495 haybine, 12', Ford engine, one owner, low hrs., excellent condition \$14,500/Offer 301-833-9091

NH 269 Baler w/rower, good condition \$1,200 or Best Offer Berks Co 215-589-2632

NH 477 7' haybine \$1,750 Schuylkill County 717-384-4319 before 8 am

NH 495 12' haybine, 2 years old, like new, \$7,000 814-848-9753

JD 6000 1000 rpm blower, A1 condition \$525 717 665-3860

JD 730 gas, 3 pt., narrow front, good rubber Asking \$2,800. Also 5x14 plow 215-488-1722

John Deere 415 four bottom 16 trip plow, A-1 condition, \$900 301-658-2565 Cecil Co

MF 2 row corn planter, insecticide and fertilizer hoppers, good condition, Hesston 7020 chopper good condition, 2 row narrow corn head, new chains, hay pickup head D J Implement 717-949-3074

MF 65 tricycle, and 7' rotary mower \$1,950.; Ferguson 3 pt corn planter, as is. \$65. NH Super 23 blower \$135. Farmall M diesel, good condition \$850 717-534-1253

MM G-950, IH 510 13x7" grain drill w/fertilizer and grass seed boxes 301-582-1927

Myers Mighty Mist Sprayer, 3 pt hitch, 100 gallon tank, excellent condition Asking \$2,000 717-784 1038 or 784-0259

JD 290 2 row corn planter, pull type with insecticide hoppers, like new condition. Monmouth County, NJ 201-780-3297

JD 347 w/kicker, excellent condition \$10,000/Offer 301-833-9091.

JD 4020 Diesel tractor w/WF, in nice condition Price \$6200 717-532-7054

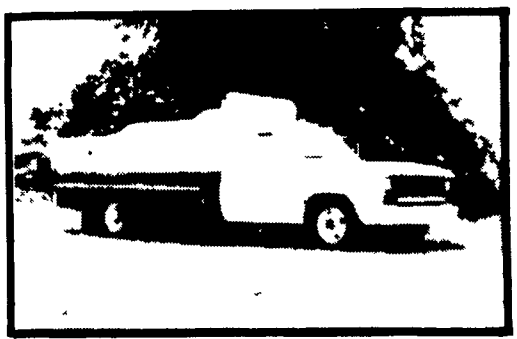
JD 4020 D WF, PS, twin outlets, \$6,300/Offer 301-833 9091

JD 4020 side console WFE, excellent condition, \$7900 717-264-1154

JD 4030 tractor w/4 post roll guard, only 1200 hours, very nice condition Also, have 4030 w/2700 hours, in very nice condition 717-532-7054

JD 4230 WFE, 18x38 rubber, dual hyd, rebuilt fuel pump, solid \$8900 717-264-1154.

JD 4440, 590 hrs., cab, QR, 20-38 rubber, like new, \$23,000 717-264-1154



ARMSTRONG
WE GO THE EXTRA MILE

Loader-Dozer



★ **TUBELESS** ★

16 9x24 8 ply	\$265 00
16 9x24 10 ply	\$330 00
17 5Lx24 6 ply	\$240 00
17 5x24 8 ply	\$270 00
15 5x25 12 ply	\$320 00
17 5x25 12 ply	\$445 00

★ **TUBE TYPE** ★

14 9x24 6 ply	\$200 00
14 9x24 8 ply	\$220 00
16 9x24 6 ply	\$220 00
16 9x24 8 ply	\$235 00
16 9x24 10 ply	\$280 00
17 5Lx24 8 ply	\$240 00
16 9x28 8 ply	\$260 00
18 4x28 10 ply	\$340 00
20 5x25 12 ply	Call For Quote
23 5x25 16 ply	Call For Quote
1300x24 10 ply	\$225 00
1300x24 12 ply	\$245 00
1400x24 10 ply	\$255 00
1400x24 12 ply	\$280 00

Contractor F-3

11Lx15 8 ply	\$80 00
11Lx16 8 ply	\$92 00
11Lx16 10 ply	\$98 00
750 800x16 10 ply	\$80 00
11Lx16 12 ply	\$130 00
145 75 16 10 ply	\$225 00

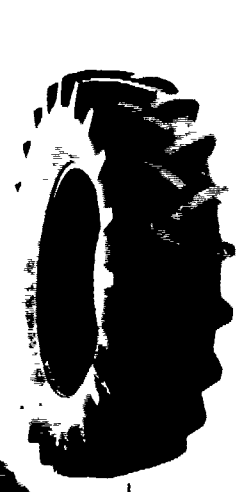
22x11 00-8	\$38.01
25x12-9	\$54.71
18x950-8	\$30.65

Front Tractor

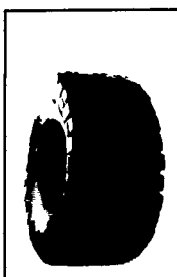
400 12	\$22 00
400 15	\$24 00
500 15	\$31 00
550 16 4 ply	\$33 00
550 16 6 ply	\$36 00
600 16 4 ply	\$37 00
600 16 6 ply	\$41 00
650 16 6 ply	\$42 00
75L 15 6 ply	\$50 00
750 16 8 ply	\$54 00
750 16 6 ply	\$50 00
750 18 6 ply	\$64 00
9.5L 15 6 ply	\$55 00
9.5L 15 8 ply	\$60 00
1000 16 6 ply	\$80 00
11L 15 8 ply	\$75 00
1100 16 8 ply	\$110 00
11L 16 1 8 ply	\$160 00

Above Tires Shipped UPS - No Charge!

Hi Power Lug

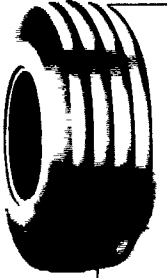


11 2x24 4 ply	100 00
14 9x24 4 ply	150 00
14 9x24 6 ply	165 00
14 9x24 8 ply	190 00
16 9x24 6 ply	190 00
16 9x24 8 ply	210 00
14 9x26 6 ply	172 00
18 4x26 6 ply	235 00
23 1x26 8 ply	525 00
1 2x28 4 ply	115 00
1 2x28 6 ply	130 00
1 2x28 8 ply	145 00
1 6x28 4 ply	160 00
1 9x28 4 ply	160 00
1 9x28 6 ply	175 00
15 9x28 6 ply	220 00
16 9x28 8 ply	240 00
16 9x30 6 ply	230 00
18 4x30 6 ply	270 00
23 1x30 8 ply	650 00
24 5x32 10 ply	750 00
16 9x34 6 ply	255 00
18 4x34 6 ply	299 00
18 4x34 8 ply	325 00
20 8x34 6 ply	459 00
20 8x34 8 ply	510 00
23 1x34 8 ply	689 00
11 2x38 4 ply	140 00
12 4x38 4 ply	168 00
13 6x38 4 ply	179 00
13 6x38 6 ply	198 00
14 9x38 6 ply	224 00
15 5x38 6 ply	225 00
16 9x38 6 ply	279 00
18 4x38 6 ply	325 00
18 4x38 8 ply	365 00
20 8x38 8 ply	510 00



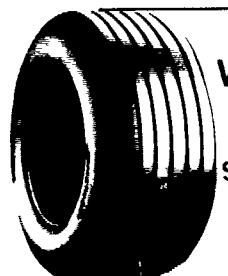
8 3x24	\$95 00
9 5x24	112 00
14 9x24 6 ply	195 00
16 9x24 6 ply	210 00
18 4x16 1 6 ply	245 00
18 4x26 6 ply	340 00
11 2x28 4 ply	152 00
13 6x28 6 ply	225 00

Used Grass Tires In Our Stock



1100x16 12 Ply Tube Type \$135

1100x16 12 Ply Tubeless \$150



Wagon Tires

We Ship To You UPS! No Charge

Subtract \$5.00 April Special



Small Rear Farm

750x20 4 ply	59.95
750x24 4 ply	64.95
8 3x24 4 ply	79 00
9 5x24 4 ply	84.00
11 2x34 4 ply	135 00
11 2x36 4 ply	137.00
12 4x36 4 ply	155.00
13 6x36 4 ply	189 00



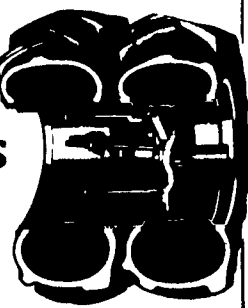
Skid Loader Tires

10x15 6 ply	\$65 00
10x15 8 ply	\$68 00
10x16 6 ply	\$80 00
11 16 8 ply	\$120 00
Steel Shield 11x16 6 ply	\$95 00

Above Tires Shipped To You FREE



SUPER LOCK II dual wheels



Check Our Dealer Prices!

For Special Mounting Price... Call For Quote!

ARMSTRONG FARM TIRES

April Tire Values!

ALL ORDERS OVER \$250.00 DURING APRIL DELIVERED FREE TO YOUR FARM!
(Under \$250...Only A Small Fee Extra)

ARMSTRONG'S REBATE REBATE All American REBATE

Get \$150 in U.S. Savings Bonds when you move up to Armstrong Tractor Radials



Buy a pair of Super Hi Power Lug Radial tires and Armstrong will send you \$150 in U.S. Savings Bonds

SUPER HI-POWER LUG RADIALS!

18 4R34 6 Ply	\$399 00
16R38 6 Ply	\$429 00
18 4R38 6 Ply	\$459 00
18 4R38 8 Ply	\$529 00
20R34 8 Ply	\$639 00
20 8R38 8 Ply	\$649 00
20 8R38 10 Ply	\$699 00

JD 4230 WFE, 18x38 rubber, dual hyd, rebuilt fuel pump, solid \$8900 717-264-1154.

JD 4440, 590 hrs., cab, QR, 20-38 rubber, like new, \$23,000 717-264-1154

Glencoe 14' pull type field cultivator w/manual fold wings, field ready and in good shape, MF 3 pt hitch tool bar corn and soybean planter w/5 model 41 planter units, double disc openers, row width adjustable down to 16"; Haban trailer mounted PTO corn sheller, excellent condition, 8' Brillion transport Sure Stand grass seeder w/both grass and legume boxes 215-967-1821 after 6 p.m

IH hydro 86, 2,000 hrs., WF, IH 684 w/22 Dunham loader, 1300 hrs 215-445-6816

IH, 1066 2600 hrs., twin outlets and shafts, new TA, good condition, \$7,500/Offer 301-833-9091

IH 544 D Hydro Utility, low hrs., good condition, excellent rubber, twin outlets, \$4,500/Offer 301-833-9091

INVITATION FOR BIDS

Notice is hereby given that M & T, A Partnership, will accept sealed bids on the following personal property to be opened in the office of the partnership at 305 Penn Street, Huntingdon, Pa., 16652, on the 22nd day of April, 1985, at 12:01 p.m. The owner reserves the right to reject any and all bids. The items available for sale are as follows:

- 33 stalls
 - 300 gal gas tank
 - 500 gal bulk tank (DeLaval) with 4 hp refig unit
 - 16x40 Fickes Silo
 - 12x40 Fickes Silo
- For further information or for an inspection of the items, please call Harold at 814-643-1309 evenings

Used 2-85 Diesel White Tractor, excellent condition, \$14,000 2-70 Diesel White Tractor, \$10,000 660 Oliver Gas Tractor, \$1,000. 88 Oliver Gas Tractor, \$800. 77 Oliver Gas Tractor, \$800. Ford 4 Bottom Plow, \$800. NH 519 Spreader w/ T-bar Chain, \$2,000. NH 518 Spreader, \$1,800. JD 790 Spreader, \$1,000. NH 25 Blower, excellent condition, \$1,500. Farmall M w/NI 307 Picker, \$2,500. 8600 White Diesel Combine, 500 hours, \$23,000. 525 Oliver Combine, 2 heads, \$5,000. White 5100 6 row Liquid No Till Corn Planter, 500 acres, \$7,000 Int'l 2 row Corn Planter, \$250. Oliver Mower, \$250. NH 770 Forage Harvester w/2 heads, \$3,500. JD#6 Harvester, \$500. NH 355 Grinder Mixer, used 10 times, new condition, \$5,500 New TR75 Combine, Cat engine, \$45,000 Brillion 16' Transport Harrow, \$2,600 Brillion 12' Cultimulcher, \$4,400 FARNSWORTH FARM SUPPLY 103 Cemetery St - Hughesville, Pa 17737 717-584-2106.

Ask About Our 4 Year Guarantee on Rear Tires Strongest In The country

We Install Tires On Your Farm

- Centre Hall • Williamsport
- Sunbury • Allentown
- North Penna • New Jersey
- Northern Maryland

Route 230 West Mt. Joy, PA

MUMMAU TIRE

Serving Farmers In Penna. New Jersey Northern Maryland and Delaware

Out Of State 717-653-1260 In Penna. 1-800-222-1729