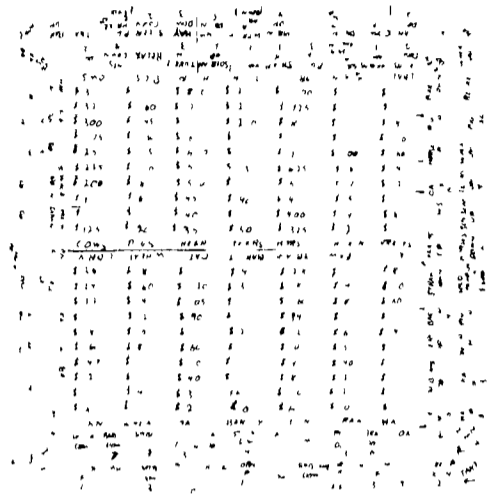


**TROUT**  
**Michelfelder's Trout Farm, Inc.**



R D 2, Boyertown, Pa 19512  
215-367-2769  
Serving Restaurants,  
Game Assns., Private Stocking  
For Over 30 Years  
Call For Price Quotes  
—LIVE DELIVERY—

**LOOKY HERE**  
**A New Game**



The idea of the game is to buy and sell animals and grain so profitably that one becomes the wealthiest player

The faster players take their turn the faster prices change

You must be alert when to buy or sell  
Game includes game board 2 dice 6 buttons money, 6 multiplication tables 6 peg boards, 84 pegs 14 price markers

Just send your address to:

Buy and Sell  
Box 453

Schaefferstown, PA 17088  
\$15 Plus Delivery - Cash on Delivery -  
Delivered by UPS

Name \_\_\_\_\_  
Address \_\_\_\_\_

**TRUCKS AND TRAILERS**

**35**  
'83 Chevy Silverado, heavy duty 1/2 ton pickup, 305 4 spd, PS, PB, AM-FM, sliding rear window, 6100 GVW, 13,000 miles, like new \$7,950 717-733-2873

**AUTOS**

For Sale 345 Owatonna Mustang, good cond Lanc Co Phone 717-354-0484

'79 GM diesel 260 engine, new rings and valve job 400 turbo trans, complete all accessories \$750 301-734-6529 after 5 p m

**MISCELLANEOUS**

**Butcher Kettles and Furnace Doors**

**JACOB E. FISHER**  
Georgetown  
Bart, PA 17503  
P O Box 22

**BUSINESS CARDS**

15m (raised print) one color on white  
Garage forms (3 part) '74 40m  
Salesbooks 4 x 7 '96 00c  
Fliers '26 00m Tickets '34 00m No 10  
Env '35 95m No 6 1/4 Env '27 50m  
Posters 11 x 17 '40 00c NCR  
Forms (2 part) 5 1/2 x 8 1/2 '60 75m  
Letterheads '24 50m Brochures  
'57 10m Labels as low as '12 50m

**SIGNS & SUPPLIES**

All types ready made or custom  
(2) 11 1/2 x 24 (3D) Mag '30 00 (4)  
Flat 12 x 24 Mag '100 00 (10)  
Truck Door Decals 12 1/4 x 18 1/2  
'121 50 (100) Auto tags '160 00  
(10) Builder 18 x 24 2 sided with  
frames '264 00

**RUBBER STAMPS**

3 line 2 inch 14 90 3 line 3 inch 15 50

**AD SPECIALTIES**

Full Line Call For Prices  
Prices Do Not Include Tax  
And Shipment  
Some Items Require Type & Art  
Setting Charges  
Call For Free Price Quotes  
**J. LANDIS BOWERS**  
P O Box 188 Hemp Hill Road  
Silver Spring Pa 17575  
717 285 5449  
See Us at Market 3 and Green Dragon  
Markets 5 p m 9 p m

83 Chevy Sport Van, 12 passenger, 350 auto, PB, PS, 34,000 miles \$8,950  
80 Chevy Beauville 8 passenger window Van, 350 auto, PB, PS, air, cruise, excellent condition \$6,950 '82 Dodge 15 passenger Maxi Van, 360 auto PB, PS, air, AM-FM, 67,000 miles \$6,950 717-733-2873

1974 Chevy C-30 w/Hos tetter 10 1/2 cattle body w/drop and roll up doors, 350 4 SP PS, PB dual gas tanks, 11,000 GVW, \$2,600 717-653-4086

1977 CO1810B Int custom cattle truck, 26' body, 2 swinging dividers, PS, air brakes, 10x20 tires, 5x2 trans 201-638-6234

1978 Chevy Silverado, Camper Special, 3/4 ton, 4SP, PS, PB, 62,000 mis, good condition 215-484-2069

1979 40' Bo-Cat, set up for shavings and/or firewood, good condition 1973 GMC 9500, 318 new major, 13SP, wet line, good buy. Will Separate. 301-733-2862

For Sale 1979 GMC 35 rollback, 2 cars, 4 spd., V8, 1978 International Loadstar grain dump, 30' steel dump trailer. Priced To Sell 814-623-9696

For Sale 1974 Ford LN9000 Louieville tractor, 318 Detroit diesel, 10 spd Road Ranger, tandem axle, sleeper and good paint Licensed for 80,000 lbs \$13,900 717-866-2641

For Sale 1983 Chevy Step Van, 12', PS, PB, aluminum body, dual wheels 717-266-6305

For Sale 13' dump bed with hoist Call after 6 p m 215-822-3910

For Sale 1963 GMC 6000 truck with 9' Stoltzfus lime body with booms 32,000 GVW Will sell separate Call 301-791-0020

For Sale 2 ton dump trailer, 12 volt hydraulic lift unit, electric brakes, 8 ply tires 717-653-2185

For Sale 22' Eby aluminum flatbed, excellent condition J & L Equipment 717-369-2637

For Sale 45' flat bed trailer, alum sides, floor and wheels, \$4,500 814-848-9753

Heavy duty flat body truck bed, 18', good condition \$950 717-626-5591

1974 Int 1600 Loadstar, V8, 5 spd with or without 22' Morgan Van Body, 144" wheel base \$1,895 or best offer 215-965-6363

**NEED CASH?** We buy unwanted trucks and parts, scrap aluminum of any kind Wrecked dumps, vans, flats, tank trailers, etc Call 215-944-9871

Thermo King NWD-30, good condition, \$1,500 Union Co 717-966-3964

for model G hyd, w/boom & cultivator 215-539-9076

**BERKS COUNTY-Upper Bern Township, 86 acre farm with 2 1/2 story, 4 bdr brick farmhouse, barn and storage building 1 1/2 miles from Shartlesville Call for details BERKS COUNTY-Upper Bern Township, 72 acre farm with 2 1/2 story, 3 bdr farmhouse, summer house, 3 bay garage and other buildings Call for details Gerald A Epting Real Estate 401 S Fourth St, Hamburg, Pa 215-562-2227**

Cattle Truck-1972-C600 Ford, all aluminum Eby body, 361 Ci-5 + 2 B trans, rear, excellent tires, PS, all new brakes, excellent heater, runs very good, may need some rear end work \$6,000 717-738-9775 or 838-1294

Flatbed Gooseneck 22'x8' Tri-axle, elect brakes, 14,000GVW, htch included \$1,595 717-788-5676

**FOR SALE Dairy Operation w/215 acres limestone soil, facility for 300 cows Farm has lots of extras worthy of investing Available Owner Financing Available Can be bought with or without cows and machinery 304-263-9801**

**FOR SALE OR LEASE Livestock Trailer, gooseneck 8'x16', 1 yr old, like new Selling Price \$5,100 or lease terms Albion, Maine 207-437-9250**

**FOR SALE 1974 Chevy pickup truck, V8, automatic, PS, PB, radio, long bed, \$750 717-733-6333**

**FOR SALE 2 20' aluminum grain boxes w/hoist and pumps 717-949-2363 or 949-2258**

**FOR SALE 20' steel flatbed w/new 20 ton hoist, \$1,995 215-267-6547**

**FOR SALE '69 U Model Mack 237 5 SP wet line Wisconsin Model V461D power unit w/hydraulic pump attached 201-463-1469 after 7PM**

**For Sale Int'l 1964, CO 1700, 20 foot flatbed with sideboards Good condition Call mornings, 215-944-0255**

**For Sale New, used dump grain flats, rollback, truck bodies Good selection of used trucks combine, Lowboy and dump trailers 814-623-9696.**

**1968 International model 1800 with Wood dump body, 4x1 1/2' bed, 10x20 tires Many recent parts replaced. 717-569-0435 Monday thru Friday 8 AM 4 30 PM**

**1971 Ford LN 800 Truck w/18' steel Knaphide grain body, 52" sides, 20 ton Galion hoist, very good condition Harford Co 301-838-7651**

**WANT TO RENT-150 free stall barn w/6 unit Delaval harring bone milking parlor, 2,000 gal bulk tank 717-588-0579**

**1968 C-80 Chevy, 30,000 GVW, V6-53 Detroit, recently overhauled, 18' grain dump Priced Right Cumberland Co 717-423-6142**

**1973 Dorsey 12'6"x40' w/western scene on side, semi trailer 814-435-2943**

**1973 IH twin screw, PS, wet line, new rebuilt 549 motor, new clutch, compressor, pump, etc, sliding fifth wheel, real nice shape \$8,500 717-789-3516**

**YES!! ENGLE DOES MAKE IT EASIER!!**

- 84 Ford F150 4x4, Flare Side, 306 Cyl, 4 Speed, Chrome Wheels, Cameo Top, 12,000 Miles, A Title, Rare Find, Still in Factory Warranty
- 84 Ford F150 - 4x2 Pickup, 6 Cyl, 4 Spd, O D, PS, PB, 1 Owner, Only 10,000 Miles
- 84 Ford F150 4x4 V8 Auto XLT 2 Tone Paint A Title
- 83 Ford F150 4x2 Pickup, 6 Cyl, 4 Spd, OD, PS, PB, 1 Owner, Only 13,000 Miles
- 82 Ford Bronco, 4WD, XLT, AT, 302 V8, Blue & White, Rare Find, A Title
- 82 Ford Bronco, XLT Lariat, 4x4, 302, Auto, 2 Tone Victoria Paint, A Title
- 83 Ford F150 4x4 Auto, 302 V8, 2 Tone Paint, PS, PB, AM/FM Stereo.
- 79 Toyota Long Bed 4x2 Sport Truck, 4 Cyl, 5 Speed, Custom Stripes, Nice Little Truck
- (2) 78 Ford L-N 8000 Cab & Chassis, Cat 3208 Engine, Diesel, 5 Spd. Over 2, A Title, 186" Wheel Base. Hard Find.
- 73 Chev. Dump w/Spreader, V8, 5 Speed, 2 Way Axle, 26,000 GVWR, 60,000 Miles.

In PA The Call's On Us 1-800-242-8075  
Out of State Call 1-717-692-4841

**ENGLE FORD, INC.**

Rt. 147 North  
Millersburg, PA 17061

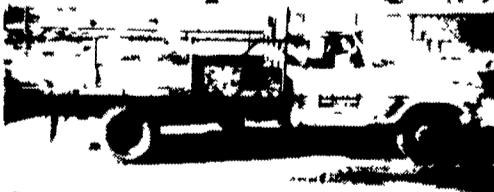
**USED TRUCKS**



**'79 Ford F250  
400 Engine, Auto. Trans., P.S., P.B.  
\$1,500**



**'69 International Fleetstar 2000  
250 Cummings Engine, 10 Speed, Road  
Ranger Trans. 34# Rears WB 188",  
Air Brakes & Power Steering  
\$5,900**



**'68 Ford F-350  
360 Gas Engine, 4 Speed Trans.,  
12' Stake Bed, Heavy Duty Trailer Hitch  
\$1,300**



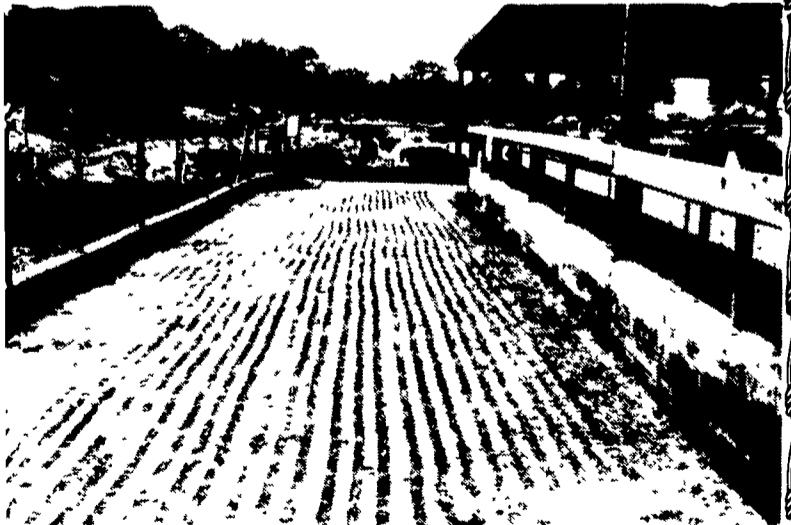
**65 Dodge D-500  
318 Gas Engine, 4 Speed Trans.,  
7.50x20" Rubber, Needs Clutch  
\$900**

Call (717) 859-1127  
Lancaster County

**SAVE VALUABLE COWS FROM FALLS ON SLICK CONCRETE**

Scabbling has become the most efficient way to end slick concrete problems. Hundreds of farmers have found it both effective and economical.

We have developed the right equipment at the right price with the know-how to back it up.



Now you can rent this equipment and do it yourself or we will contract to do the job for you. Call us collect for more information.

**SUBURBAN RENTALS, INC.**

Hagerstown, MD Please call us Collect (301) 790-1303

Now serving a 10-state area

**MEASE Motors Auto Sales**

RD #2, Rt. 72  
Jonestown, PA 17038  
717/865-4810

1 1/2 Miles North of Jonestown Intersection