

# PUBLIC SALE

SATURDAY, MAY 4, 1985

2:00 P.M.

1½ story cabin shell, 24'x30' with deck on 1 acre land in Potter County, PA.

Open House April 13-14-27-28

From 1 to 4 p.m.

From Coudersport go North on Rt. 44 & 49 were 44 leaves 49 take 44 about 2 miles to second dirt road left go ¼ mile to Woodland Acres turn right property on left.

Terms by

**DENNIS RANCK**

215-856-7603

Auctioneer: Elton Horning  
AU-000434-L  
Morgantown, PA  
215-286-0135

# PUBLIC SALE

**OF TRACTORS, FARM MACHINERY, PICK UP TRUCK, MISCELLANEOUS ITEMS, ETC.**

The undersigned will offer the following for public sale located approximately ½ mile west of Newburg, Pa. along Route 641; if leaving Shippensburg, Pa. on Route 696 north, at stop sign in Newburg, turn left, 1st farm on right. Watch for sale signs on:

**SATURDAY, APRIL 20, 1985**

Beginning at 12:30 P.M.

**TRACTORS, FARM MACHINERY, ETC.**

McCor.-Int. Farmall 560 diesel tractor w/torque amplifier, wide front end, 2 point fast hitch & good rubber, runs & looks good; Hydro Int. 544 diesel tractor w/wide front end, 2 point fast hitch & good rubber, runs & looks good; McCor. Farmall Cub one plow tractor w/elec. start, lights & hydraulic lift, runs good; w/following equip., 5 ft. mower, cultivators & 4½ ft. snow blade; N.H. #717 forage harvester w/2 row corn head, 1 row corn head, grass head & direct cut head; J.D. 214T heavy duty baler w/modern bale kicker; Int. 990 7 ft. cut hay bind; Case 5 bar pull type hay rake; 16 ft. green chop wagon; Badger 16 ft. forage wagon; J.D. 14 ft. forage wagon; 2 - 16 ft. bale wagons w/wooden racks; Kill Bros. gravity bin wagon; Int.-McCor. # 311 two point hitch 3 bottom trip back plows; M-F 10 ft. transport disc; M-F 7 ft. double disc; 2 single (1-7ft., 1-9 ft.) cultipackers; 3 section lever harrow; 2 section smoothing harrow; J.D. 17 hoe disc drill on low rubber; Int. # 56 four row corn planter w/fertilizer boxes; Hawk Bilt # 157 drum type p.t.o. manure spreader; N.H. #36 flail chopper; 6 ft. 2 p.h. scraper blade; wood saw mantle & blade (to fit Farmall A); chassis for tub type manure spreader on rubber; Hustler Fill Rite # 56 p.t.o. silage blower (like new); Smoker 20 ft. bale elevator w/ elec. motor; 2 p.h. to 3 p.h. adaptor; etc.

**LAWN TRACTOR, MISC. ITEMS, ETC.**

New Idea EGP 150 elec. tractor w/38" front mount rotary lawn mower; Electrak E15 elec. mower w/38" front mount rotary lawn mower; 3' x 4' metal bed lawn dump cart; 32 ft. wooden extension ladders; 16 ft. tubular steel gate; 2 Pipeline milker units (Surge); one hole corn sheller; iron beam scoring out plow; wooden beam scoring out plow; milk cans; Shenandoah wood burning stove; 2 wheel utility trailer; approx. 8 ft. of stainless steel insulated chimney; partial rolls of fencing; odd lots of lumber; small amount of light green vinyl siding & corner strips; and other items not mentioned.

**PICK UP TRUCK**

1973 Custom 20 three quarter ton Chevrolet Pick up truck w/292, 6 cyl. engine, 3 speed manual shift, green in color, shows some rust, 44,000 mileage, good rubber and runs good.

**ORDER OF SALE:** Beginning at 12:30 P.M. with small amount of items from wagon; approx. 1:00 P.M. tractors, farm machinery, pick up truck and other large items.

**TERMS** - Cash or Approved Check.

**HARRY N. MINICK**

Auctioneers - D. Hershey  
Lic #AU 000406 L

A. McLaughlin, Lic #AU-000668-L

C. Martin, #AU-001466-L

Clerk - Beidel

Lunch Stand Reserved

Not Responsible for Accidents

Identification Required for

Bidder's Number



# PUBLIC SPRING AUCTION

**LAWN & GARDEN EQUIPMENT,  
TRACTORS, MOWERS, TILLERS &  
MOPEDS**

**SAT., APRIL 13, 1985**

**SALE TIME: 12:30 P.M.**

**Location:** 322 East Of Ephrata To Traffic Light In Village Of Hinkletown. Turn Left To Martindale, Turn Left On Gristmill Rd. & Follow Auction Signs To Auction. Lancaster Co., Pa.

**NEW EQUIPMENT:** 311 Dixon (w) Catcher (demo); 424 Dixon (w) 42" Cut (demo); Wheel Horse 16 h.p. Twin Work Horse (w) 42" Cut; 8 h.p. Ampro Tiller, Rear Tine (w) Select Direction; Ampro 5 h.p. Rear Tine Tiller; 3 pt. 3 Gang Roxy Mower; VIP Garelli Moped; Sport Garelli Moped; 2-19" Push Mowers; Brinly Pull Type Fertilizer Spreader; Dump Cart; 4x8 Trailer.

**GOOD USED EQUIPMENT:** 145 Ford Hydra (w) Mower; 424 Dixon; 12 h.p. M.F. Variable Spd. (w) Mower; Case 446 16 h.p. High Clearance (w) Mower; Case 646 16 h.p. Heavy Duty (w) Loader; IH 123 12 h.p. Hydra (w) Mower; Grasshopper 16 h.p.; Kubota B6000 (w) 48" Wood Mower; Wheel Horse 857 (w) 36" Mower; MF 7 h.p. Trac. (w) Mower; MF 10 h.p. (w) Mower; New Holland 8 h.p. (w) Mower; Case 7 h.p. (w) Mower; MF 832 Rider; Case 8 h.p. Trac. (w) Mower; Case 80 Rider (w) Electric Start; Roto Hoe 8 h.p. Rear Tine Tiller; Lawn Boy Edger; 12" Poulan Chain Saw; 10" Poulan Chain Saw; 12" Rem. Chain Saw; 12" McCulloch Chain Saw; Jacobsen Rear Bagger Push Mower.

**NOTE:** Come early as there will be no small items on this sale. An excellent selection of new & used lawn & garden equipment.

**TERMS BY:**

**LAWN CARE OF PA.**

**DANIEL Z. MARTIN & SON**

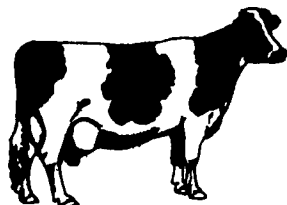
215-445-4541

**Auction Conducted By:**  
Randal Kline, Lloyd Kreider  
Roy Good Jr., Auctioneers  
AU-002116-L

Refreshments Available



**KLINE & KREIDER AUCTIONEERS**



# COMPLETE DAIRY HERD DISPERSAL AND SEMEN

**THURSDAY, MARCH 28, 1985**

at 11 a.m. Sharp

Located at the farm in Snyder County, 7 miles East of Route 35 at Richfield, and 2 miles Southwest of Route 104 at Fuller's General Store. Follow direction signs day of sale.

**117 HOLSTEINS 117**

**32 REGISTERED • 85 HI-GRADES**

Consisting of 65 milking animals, 27 bred heifers, 24 yearlings, and calves. 1 Reg. Service bull.

**A young herd with lots of milk. Used to free stalls. Creamery records for 1984 show herd ave. 17,000 lbs. milk, 3.7% test.**

**CERTIFIED--ACCREDITED--VACCINATED--  
PREGNANCY EXAMINED**

Sires with daughters selling: Arlinda Jet Stream-Twin, Kildee Astrochief Spirit, Hillhaven Standout Job, Vigo Charmcross, Yulepride Elevation Ace, Vigo Starline Elvate, Rosemere Fury Ivan.

Service sires include Cal Clark Board Chairman, Sunnycraft Chief Spirit, Rew-Hel Farms Chief Standard, Ivajen Lone Ranger.

**SEMEN SELLING:**

6 straws Wiseman; 21 straws Jet Stream; 10 straws Lone Ranger; 14 straws Chairman; 9 straws Spirit; 10 straws Elvate.

75 straws of other Sire Power, Eastern I.A. and Select Sires Will Sell

**BRING YOUR TANK TO SALE**

Also selling: Linde XR 16 Semen Tank

Complete Line of Modern Farm Machinery Will Sell at the Same Location April 12

Owner,

**BETTY J. JONES**

RD 2, Mt. Pleasant Mills, Pa. 17853

Donald Adams, Pedigrees  
Port Royal, Pa. 17082  
Bryan D. Imes, Auctioneer  
717-527-2449  
AU-001656-L

TENT CATALOGS LUNCH STAND

Lancaster Farming, Saturday, April 6, 1985-E17

document  
Sale was held March 30 by Seachrist Sales Co. on the Livestock Auction Market Grounds, 5 miles southeast of Stewartstown, York Co., Pa.

Some prices received were: J.D. 3010 tractor \$3300. A.C. 7000

tractor \$4800, forage wagons \$800 to \$1200 each, Int. 544 tractor \$3025, Int. 3-bottom plow \$560, J.D. round baler \$3600 and J.D. forage harvester \$500.

Bob & Tom Sechrist were the auctioneers. XXX

# Public Auction Register

Closing Date Monday 5 00 P M  
of each week's publication

**APRIL**

SAT APR. 6 - 9:30 AM  
Avoca, Steuben Co., NY.  
Complete Liquidation of  
the Nationally Known

Olmsted Hill Potato  
Farms, Inc. William  
Perkins, President.  
Auction by PIRRUNG  
AUCTIONEERS, Wayland,  
NY 716-728-2520.

# PUBLIC AUCTION

Furniture & Antiques from the Estates of  
Carolene H. Miller of Chestertown and Anna M.  
Long of Cecilton & others at Rudnick's Sales,  
Route 213, Galena, Md.

**SATURDAY, APRIL 13, 1985**

At 11:00 a.m.

Victorian Sofa, Maple Table w/4 chairs,  
Piano Desk, Windsor Chairs, 5 pc. Maple  
Bedroom Set, Sofa & Chairs, Tables, Lamps,  
Oak Dressing Table, Antique and Other  
Oriental Rugs, Jewelry, Various Glass, Ster-  
ling Stieff Rose Service for 12, Minton's China  
Service, Lustre Cups & Saucers, Worcester  
Plates & Compotes, Wedgwood Service Plates,  
Limoges, Oriental, Gold Band China, Cut  
Glass Goblets & Bowls, English Spode China,  
Fish Plates, Fireplace Tools, Living Room  
Furniture, Dining Room Furn., 2 Refrigerators,  
Washers & Dryers, TV's, Clocks, Dome  
Top Trunk, Some Sterling Serving Pieces, and  
Much, Much More.

Some Ant. Jewelry: Ladies 18K gold ring w/1  
ct. dia., Platinum ring w/11 diamonds total  
1.4ct., Plat. ring w/center marquise dia. plus  
2.2 of dia. Cocktail ring w.14 pear shaped  
emeralds 6.5 tot. ct., etc.

Pittsburg winter-scene chipped ice shade  
lamp, sugar bowl C1870, Mandarin early 19th  
cent. plate, nippon nut set, art vase, Loetz type  
C1910 irridesent vase, Staffordshire figure.

**H. RUDNICK & SONS, INC.**

Sales Managers & Auctioneers

Galena, MD 21635

Phone (301) 648-5601

(Other fine consignments will be accepted for  
this sale)

SAT. APR. 6 - 9:30 AM  
Inventory Reduction Sale,  
Farm, Industrial, Lawn &  
Garden Tractors & Eq.  
Marshall Machinery, Inc.,  
Rt. 652, 5 mis. E. of  
Honesdale. 717-729-  
7117. Blaine Rentzel &  
Fred Goodrich, Auc-  
tioneers.

SAT. APR. 6 - 10 AM  
Public Auction of Real  
Estate and Personal  
Property South of the  
Village of Hepler, between  
Klingerstown and Pitman  
in Mahantongo Valley,  
Schuylkill Co., PA. turn W.  
off Rt. 125 at Purple  
Pump Cafe, turn S. at  
Rothermel's Funeral  
Home. Miriam Wehry,  
Owner. Mike & George  
Deibert, Auctioneers.

SAT. APR. 6 - 10 AM  
Public Sale of Poultry,  
Farm Mach., Motor Home,  
Hshld. Goods & Coins  
Located 168 S Market  
St., Ephrata, PA.  
Directions: Rt. 322 W end  
of Ephrata turn S (At  
Lincoln House), onto S  
Market St. Terms by  
Moses H Martin & Vera  
Martin J Glenn &  
Timothy G Horst, Auc-  
tioneers

SAT. APR 6 - 9 AM Farm  
& Butcher Eq. Tools,  
Antiques, Hshld. Located  
between Krumsville and  
Kempton, Berks Co., PA  
Traveling on Rt. 1-78 at  
the Krumsville Exit travel  
N. on Rt 737 for 1½ mis  
to Obyle Rd., third farm on  
right. Sale for Carl &  
Janice Wisser. Dennis F  
Wagner, Auctioneer

SAT APR 6 - 9 AM  
Consignment Sale of Farm  
Mach. Household Goods,  
Real Estate Located  
Farm of Bill Tressler along  
Rt 64 between Mill Hall &  
Lamar, PA. Bill Tressler,  
Auctioneer

SAT APR. 6 - 6th Annual  
Public Consignment Sale  
at Beaver Run Amish  
School Consignments  
Wanted. Farm Mach., Hay,  
Straw, Cattle, Hogs,  
Wood, Hand Tools, Quilts,  
Hshld Goods, Antiques  
Sale Mgr. Eli J Hostetler

SAT. APR 6 - Ebersole's  
Third Annual Con-  
signment Sale of Farm  
Mach. & Farm Related  
Items, Lawn & Garden Eq  
Ebersole's Auction Barn  
717-867-1041 or 838-  
4950 by March 18. David  
L & Roy I. Ebersole,  
Auctioneers

SAT. APR. 6 - 11 AM  
Public Sale of Modern  
Farm Mach. Located RD 3,  
Mifflintown. Carol &  
Raymond Hoffman,  
Owners Bryan Imes,  
Auctioneer

SAT. APR. 6 - 9:30 AM  
Public Auction of Farm Eq.  
& Related Items Located  
2 mis. N. of Port  
Trevorton or 4½ mis. S of  
Selinsgrove, PA, along Rt  
11 and 15 at first farm S.  
of Parker's Exxon Station.  
Clair F & Jean L. Wise,  
Owners. Dale L. Longacre,  
Auctioneer. Roger A  
Lauver, Appr. Auct.

SAT. APR. 6 - 9:30 AM  
Public Sale of Real Estate  
and Personal Property  
Located between  
Morgantown & Reading,  
follow Rt 10 to Rt 568,  
go W. to Moore Rd., turn  
left to property Terms by  
Morris E. & Edna M  
Kachel Elton Horning &  
Rodney Horning, Auc-  
tioneers

SAT APR 6 - Con-  
signment Sale on the  
Norman Parker Farm,  
Jacobstown-Cookstown  
Rd., Wrightstown, NJ  
Large Equipment 609-  
758-8603

SAT APR 6 - 1 PM Public  
Auction of Farm Mach.,  
two Tractors, and Beef  
Cattle Located 5 mis NW  
of Jersey Shore, PA Carl  
& Millie Lukins, Owners  
Fralely Auction Co

SAT APR 6 - 10:00 AM  
Good Clean Farm Mach &  
Horse Related Items 1  
PM Real Estate Located  
Take Rt 897 N of  
Reinholds about 1 mi to  
Windy Mansion Rd. turn  
right for ¼ mi, farm  
situated on both sides of  
road. Estate of Roy B  
Snyder Martin Auc-  
tioneers, Inc. 717-768-  
8108