

**Carroll's Sales Co., Inc.**

**"ABSOLUTE" PUBLIC  
CONSIGNMENT  
AUCTION**

of  
**CARS, TRUCKS, 30 TON  
CRANE, BACKHOES, FORKLIFT**  
**SATURDAY, APRIL 27, 1985**  
At 11 O'Clock

Location: Carroll Sales Co., Route 13, 9 miles south of Dover, 1 mile north of Felton, Del.

1 Ford Bronco, 15+ Pick-Up Trucks, Ford & Chevy; 1 Passenger Van, 1 1970 Pettibone 30 Ton Crane, Approx. 10 Equipment Trailers, 8-10 Ton Capacity, 4+ Bucket & Line Trucks, 1 1977 Yale Gas Powered Forklift Truck.

"Other Consignments coming every day"  
"Don't miss this sale"

Consign now for advertising.  
"Everything sells "High Bidder",  
Everything sells AS IS"

**TERMS:** Cash, Certified check or bank letter to guarantee your check.

**AUCTIONEERS**  
Carroll's Sales Co., Inc.  
Harry Barrett

**Chester Lee Carroll**  
WE SELL THE EARTH AND EVERYTHING ON IT

**200-250 HEAD  
SPECIAL HORSE SALE  
WORK HORSES  
& DRIVING HORSES**

**FRIDAY EVE., APRIL 12, 1985**

Tack 6:00 P.M.  
Sale 7:00 P.M.  
Horses Hitched  
at 12 Noon

**AT NEW HOLLAND  
SALES STABLES, INC.**

12 Miles East of Lan-  
caster, Pa. just off Rt. 23,  
New Holland, Pa.



- \* 1 Load Work Horses and Driving Horses consigned by Ward Wright.
- \* 1 Load Driving Horses consigned by Bud Leonard.
- \* 1 Load Driving Horses consigned by Clayton Waterbury.
- \* 1 Load Driving Horses consigned by Jonas Beiler.
- \* 1 Load Driving Horses consigned by Reuben G. Stoltzfus.
- \* 1 Load Driving Horses consigned by Elam B. Stoltzfus.

Plus many more consignments by sale time.

**For more information contact:**

Abe Diffenbach, Mgr. Norman Kolb  
717-354-4341 -717-397-5538  
Next Horse Sale Fri. May 3, 7 P.M.

**ALL-REED SALE**

On the farm located one mile north of Chestertown just off Route 213 along Route 297 in Kent County, Maryland.

**WEDNESDAY, APRIL 10, 1985**  
11:00 A.M.

**90 REGISTERED HOLSTEINS 90  
61 COWS  
20 CLOSE BRED HEIFERS  
9 OPEN HEIFERS**

27 First-Calf Heifers  
12 with Second Calf

20 Cows just Fresh within 30 Days

Several Cows are Already scored Very Good  
Many of the Young Cows have this Potential

**SIRES INCLUDE:**

Glendell, Elevation, Astronaut, Pete, East Star, Conductor, Triple Threat, Betty Chief, Jet Stream, Fury Ivan, Mars Tony, Cavalier, Tamlane and other popular sires.

A Sample of Those Selling:

VG Conductor dtr. w/19,170M and 713F. Bred to Wayne Spring Fond Apollo.

VG Astronaut dtr. w/18,160M and 730F.

VG Betty Chief dtr. w/19,060M and 680F.

VG87 Elevation dtr. w/24,280M and 740F bred to Astronaut.

GP83 Elevation dtr. w/24,830M and 805F.

GP83 Oak Green Virginian dtr. w/26,090M and 918F.

GP Glendell dtr. w/21,310M and 800F (Will score Higher).

GP84 Mohawk dtr. w/23,836M and 816F.

GP83 Gr'dtr of Elevation w/22,870M and 914F.

GP Elevation dtr. w/19,312M and 724F.

**20 OUTSTANDING  
CLOSE BRED HEIFERS**

These heifers are well grown and in excellent condition, and are due to calve in April and May. Several are sired by Milu Betty Ivanhoe Chief (noted for good udders). Others are sired by Bubbler, Samuel, Perfection, Wileeda Ranson, Jet Stream and other plus proven sires. Many are from dams with records over 20,000M.

The open heifers are also pleasing.

Tested for Interstate Shipment

Pregnancy Examined

62 head of this offering are from All-Reed Farm, 28 were selected from the Vossmon Farm of Clayton, Delaware.

Owners

**MILLARD T. REED, JR.**  
Route 4, Hopewell Corner  
Chestertown, MD 21620  
(301) 778-1123

**NORMAN VOSS & SON**

Route 1, Box 981  
Clayton, DE 19938  
(302) 653-5375

Sale Manager **REMSBURG**



P.O. Box 177, Jefferson, MD 21755  
(301) 473-8214

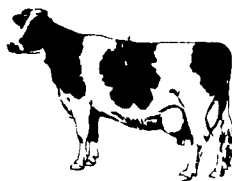
**IRWIN FARM  
COMPLETE  
DISPERSAL**

**FRIDAY, APRIL 5, 1985**

at 11:00 A.M.  
Sherman, NY

Located at the northeast edge of the village of Sherman, on Kendrick Street, 12 miles south of Westfield, NY 25 miles east of Eric, PA.

**80  
REGISTERED  
HOLSTEINS**



Selling 80 head of Registered Holstein dairy cattle; 42 milking cows, 16 bred heifers, 11 open heifers, the balance started calves. Jan. '85 herd average: 18,000 milk 3.5% 624 fat. Rolling herd average for protein: 3.4%.

A Nugget daughter sells with 3-5 356 24,447 3.5 844, with her 2 Columbus and 1 Bell daughters. A 3-0 Lewis sells proj. to 26,112 882f. A 2-yr old Cutter daughter sells projected to 26,369 923.

Sires represented: Tony, Pete, Bell, Elevation, Sexation, Rotate, Victoria, Tradition, Marxev, Commander, Molly Chief, Barrett, Lewie, Columbus, Dynamo, Mandate, Spirit, and Glenvue Joe.

This herd carries production plus the high index bulls of the breed, both as sires and as service sires. Cattle will be tested for interstate shipment.

**MACHINERY**

JD 4020 diesel tractor w/cab; JD2840 diesel tractor w/2200 hrs.; JD 5-btm 16" semi-mt. trip plow; NH 718 chopper w/2-row corn and hay pickup; JD 65 blower; JD 216 and 214 self-unloading wagons (JD 216 has tandem gear); JD 15A flail chopper; green chop wagon; NH 273 baler with kicker; NH 256 rake; NH 489 haybine; 2 kicker wagons; 36' NI hay & grain elevator; H & S 180-bushel manure spreader w/hyd. end gate and pan 1 yr. old; JD A & W 12' disc; JD 6' bush hog; 275-gallon fuel tank; Misc. small items.

**PRODUCE**

A small quantity of produce sells.  
**TERMS:** Cash or good check day of sale with ID, nothing to be removed until settled for.

Owner

**GARY, DARLENE, & ROBERT IRWIN**  
Ph. 716-761-6712

William Kent, Inc.  
Sale Manager and Auctioneers  
Stafford, NY Ph. 716-343-5449  
or 548-7738

**PUBLIC AUCTION**

**MONDAY, APRIL 8, 1985**  
10:00 A.M.

**FARM EQUIPMENT & TOOLS**

LOCATED: 5 mile west of Dover, PA on Canal Rd. Extended or 1 mile east of Big Mount, York County, PA.

International 1256 Turbo w/3 pt. wide front & Live PTO; Allis Chalmers XT190 Series III - 3 pt., Dual Remote, wheel weights, less than 1000 hrs.; A.C. #519 Hydraulic Loader on XT190 - will sell separate; Allis Chalmers WD 45 Gas w/manure Loader; International 710 - 5x18 automatic reset plow; John Deere 11 ft. Transport Disk; John Deere 535 Trailer Sprayer; Int. 56 4 Row Planter w/Dry Fertilizer; New Holland 479 Haybine; Int. 37 PTO Baler w/PTO Thrower; New Idea Semi Mtd. mower; Oliver 13 Disk Grain Drill; Int. Fertilizer Spreader - 3 pt.; Lanco Thrower Wagon; 3 pt. Post Driver; Killbros 300 Gravity Bin & wagon; New Idea 2 Row pull type picker; Spring Harrow; 4 Row 3 pt. Oliver Culti.; New Idea 236 Spreader; 2 - 1200 bushel wire corn cribs; Little Giant Elevator with electric motor 48 ft.; Int. front weights.

1973-1 Ton Ford Truck w/10 ft. Bed & Sides.

Racks for pickup truck; cement mixer; tow chain; 18.4x30 tire like new; acetylene torch; barn jack; anvil; table saw; bolts; air compressor; & many items too numerous to mention.

2 Wagon loads of small items.

**TERMS: CASH OR GOOD CHECK  
FULL SETTLEMENT SALE DAY.**

**GEORGE JONES**

R.D.#21 Dover, PA.  
Ph. 717-292-4087

**AUCTIONEER: Blaine N. Rentzel&Son**

Emigsville, PA.

Ph. 717-764-6412

Pa. Auctioneer's Lic. #761 & 1442

SAT. APR. 27 - 9:30 AM  
Meda Clugston, Ken Clugston P.O.A. Real Estate, H.H. Goods & Antiques Located 738 W. Newport Rd. Between Penryn & Elm, Lanc. Co., PA Wolgemuth Auction Service.

SAT. APR. 27 - 9 AM  
Valuable 46 Acre Farm, Antiques, Hshld. Goods, Fram Eq., Tools, Hay & Straw. Located Mt Pleasant Mills, PA. From Selingsgrove on Rt. 35 to Mt. Pleasant Mills turn left on to Potato Valley Rd., go 1 mi to sale Mrs. Grace M. Sheaffer, Owner Little IKE Eichelberger, Auctioneer.

SAT. APR. 27 - 1PM Public Sale of Farm Mach., Butchering Tools & Mechanic Tools. Located From Lancaster Take Rt. 272, 8 mis. S., after underpass turn W on Miller Rd. to Snyder Hollow Rd. approx. 2 mis. to sale. OR 2 mis. N. of The Buck off Rt. 272 left on Rawlinville Ave., turn right on Snyder Hollow Rd. Auctioneers: Kreider & Kline. Terms by: Carl G Aukamp.

SAT. APR. 27 - JD 2840 D, JD 3020 G., Tracs., Full Line Power Farm Eq., Tools, Antiques, Hshld. At Farm-2 mis. E. of Rt. 52 on 926 at Popcopson, 5 mi. S. of West Chester & 31 mis from Lanc. PA. G. Meril & Esther C. Pratt, Owners. Whiteside & Assoc. Auctioneers.

SAT. APR. 27 - 9 AM  
Public Auction of Real Estate, Cars, Antiques & Collectibles, Hshld Items Located at 109 W Main Street, Elizabethville, PA. Donald S Deibler Estate, Dockey, Dockey, Deppen, Auctioneers

**PUBLIC SALE**

**Holstein Herd — Farm Machinery  
Hay — Ear Corn — Metal Farm Toys  
Milk Cans**

**SATURDAY, APRIL 6, 1985**

10:00 A.M.

Located in Chester Co., PA, 6 miles southeast of Oxford, 4 miles north of Fair Hill, 10 miles north of Newark, Del., just off Rt. 472 on Old Forge Road.

**37 Head Holstein Dairy Animals 37 Head**

19 milk cows, 12 milking with 1st and 2nd calf, 13 fresh and due March, April and May, 12 bred heifers due May thru summer, 5 open heifers, stock bull. Pregnancy checked - 30 day charts.

**3 Tractors**

Ford 8000 diesel, wide front, Hi & Lo speeds, front & rear weights, good running condition, bought new by the Maloneys; John Deere 3010 diesel, tricycle front; DC Case gas; both in running condition.

**Farm Equipment**

International 7 tooth chisel plow, 3 pt. w/gauge wheels; Ford 5 bottom semi mounted plow, 16 in. bottoms; 2 bottom trailer plow; John Deere heavy duty 20 ft. field harrow extensions w/depth wheels; John Deere 3 bottom plow, 3 pt. 16 in. bottoms; Allis Chalmers transport disc harrow; 4 section spring tooth harrow; 10 ft. cultipacker w/twin over transport wheels, needs a little work; Allis Chalmers forage blower; John Deere 24T baler w/No. 30 hydraulic thrower; International 4 bar rake; John Deere 4 bar rake; Mulky 34 ft. bale elevator PTO drive; 2 New Holland forage wagon boxes, need work, OK for thrower bales; 2 grain bin wagons; John Deere wagon gear; John Deere 494 corn planter, 4 row; John Deere van Brunt 13 disc grain drill; John Deere 214 forage wagon; John Deere No. 12 forage harvester, and grass head; John Deere No. 76 tank spreader; John Deere 16A flail chopper; John Deere heavy duty 4 row cultivator, 3 pt.; John Deere 227 mounted 2 row corn picker; multi tube; John Deere 40 combine, needs work; New Holland 351 hammer mill feed mixer; New Holland 42 ft. mow conveyor; Patz single chain elevator; 2 PTO small seed seeders; Patz barn cleaner unit and chain; Patz feeder unit and chain; John Deere hay rakes & crimper for parts; pony & saddle; corn sheller; snowfence; silo pipe; 49 Dodge stake bed, needs work; 65 Plymouth, needs work; stainless steel strainer; stainless steel carrying pails; tires; lot of tin roofing; 40 red laying hens; feeders; etc.; feed carts.

**Feed — Household Goods — Toys**

Approx. 15 ton alfalfa & timothy hay; ear corn; Coldspot 17 cu. ft. refrigerator; sewing machine; Vesta Athens 4 burner gas stove; couch & chair; ice maker; International metal tractor; 2 Ford metal tractors; John Deere baler; John Deere spreader; John Deere wagons; bought new in the 60's.

Few small items not mentioned.

Owner:

**JOHN F. &  
MARGUERITE M. MALONEY**

Auctioneer:

Steve  
Steve Jr. Petersheim:  
717-786-4624

Lic. #AU-001349-L

Food on Premises