

THE OLD FARMER'S ALMANAC

MARCH 18-24, 1985
Spring arrives as the snow flies.

A good time to split wood now. U.S. Army sold its homing pigeons March 23, 1957. Average length of days for the week: 12 hours, 11 minutes. New moon March 21 (Thurs). Spring Equinox March 20 (Wed), 11:14 A.M. EST. Earth quake registering 8.5 on Richter scale struck near Anchorage with 131 dead and over \$500 million in damages in Alaska and West Coast March 27, 1964. First American opera at Met, March 18, 1910. Neither abstinence nor excess ever renders man happy.



Ask the Old Farmer: We have a fiber glass boat that has rust spots from anchor and fish hooks. How can these rust spots be removed? G.S. Lyndeborough, N.H.
Get a fiber glass rubbing compound from a boat dealer or make a paste of lemon juice and salt. Cover the rust spots and let sit for a half hour or so. Then wash and rinse off.
Home Hints: Use damp newspaper to clean glass instead of cloth - no lint.

OLD FARMER'S WEATHER FORECAST

New England: Through midweek rain south, snow north, cold temperatures, end of week sunny and mild.
Greater New York-New Jersey: Rain with cold temperatures through midweek, sunny and mild by week's end.
Middle Atlantic Coastal: Thunderstorms are prevalent through midweek, end of week sunny and warm.
Piedmont & Southeast Coastal: Rain and warm temperatures through midweek, sunny by week's end.

(All Rights Reserved, Yankee Publishing Incorporated, Dublin, NH 03444)

Oklahoma Cattle

Wednesday, March 13

Report Supplied by USDA

Estimated Receipts: 5800

Actual Auction Sales

Feeder Steers and heifers steady to weak. Demand good for thin offerings, especially the no. 1's suitable for grazing. Demand fair for all other feeders with outlets narrow for fleshy cattle. Bulk supply 350-750# steers and heifers with several between 500-700#.

FEEDER STEERS: Medium and Large Frame 1 325-400# thin 79.85-84.50; 150-400# just off cows 76.00-79.00; 400-500# 75.75-82.30; 500-600# 69.25-75.50, lots thin 500-555# 73.00-77.00; 600-700# 66.20-69.00, some lots 600-625# 69.00-70.00; 700-800# 66.00-68.40; 800-850# 64.30-66.75; 910-945# 63.10-63.20.

Mixed medium and small frame 1 345# 76.00; 420# 68.25; 550-600# 62.60-63.60. Medium and large frame mixed 1-2 350-375# thin 75.50-78.00; 375-500# 71.50-75.00; 550-700# 65.00-68.00; 700-800# 64.00-67.00;

800-830# 60.40-62.70; 930# 58.10; 1055# 55.55. Medium and large frame 2 400-500# 66.00-69.00; 500-700# 62.25-66.00. Large frame 2 holsteins 560-800# 52.10-57.70 several 54.20-56.50; lot 1010# 48.80.

FEEDER HEIFERS: Medium and large frame 1 350-500# 62.70-68.00, several 64.00-67.00, couple lots thin and gaunt 375-420# 69.75-70.00; 240-370# just off cows 61.50-62.50; 500-600# 60.00-64.70 several 61.00-64.00; 600-700# 61.20-63.25; few lots 700-775# 60.00-61.50. Mixed medium and small frame 1 370# 65.80; 425-600# 55.00-59.80. Small frame 1 500-600# 53.00-58.00. Medium and large frame mixed 1-2 375-500# 60.90-64.00; 500-700# 57.10-62.10. Medium and large frame 2 350-500# 56.20-60.00, lot 495# very gaunt 60.50; 550-700# 55.00-58.50, lot 610# very gaunt 59.50.

WEEKLY TRENDS: Feeder steers under 600# and heifers under 500# steady to 1.00 higher. Heavier weights both classes steady. Slaughter cows 1.00-1.50 higher. Bulls steady to firm.

Eighty-Four Livestock

Eighty-Four, Pa.

Monday, March 11

Report supplied by PDA

CATTLE 609. Compared with last Monday's market, slaughter steers strong to 50 cents higher. Slaughter cows 50 cents-\$1 higher. Good slaughter steers 54-59.25, Standard 8.50-54, Utility 45.00-49. Few Choice slaughter heifers 57.00-60, Good 51.50-54, Standard 46.00-51, few Utility 43.50-46.75. Breaking Utility & Commercial slaughter cows 41.00-46, Cutter & Boning Utility 37.25-42, Canner & Low Cutter 32-37.50, Shells down to 21. Yield Grade No. 1 1000-1825 lbs. slaughter bulls 47.00-53, few #2 900-1250 lbs. 42.00-46.

FEEDER CATTLE: Medium Frame #1 350-700 lbs. steers 57.00-68, few Large #1 5-750 lbs. 58-64.50. Medium Frame #1 4-650 lbs. heifers 50.00-59, #2 3-550 lbs. 47.00-52, Large #1 450-650 lbs. 51.00-58. Medium Frame #1 4-650 lbs. bulls 57-67.50, few #2 4-600 lbs. 46.00-55.00.

CALVES 267. Vealers mostly steady. Choice vealers, 85.00-100, Good 67.00-80, Standard 41.50-54, Standard & Good 90-120 lbs. 48.00-57, 60-85 lbs. 40.00-50, Utility 50-90 lbs. 30.00-40.00. **FARM CALVES:** Holstein Bulls 90-125 lbs. 60.00-81.00.

HOGS 97. Barrows and gilts

\$1.50-\$2 lower. US No. 1-2 205-240 lbs. barrows and gilts 43-43.60, one small lot at 44.00. US No. 1-3 350-650 lbs. sows 41-45.75, few No. 2-3 3-500 lbs. 40.00-42. Few Boars 29.00-32.00.

BOARS (Few) 29.00-32.00.

FEEDER PIGS 5. NOT ENOUGH OF ANY ONE CLASS TO ESTABLISH A MARKET.

SHEEP 131. Woolled slaughter lambs mostly steady. High Choice & Prime 70-98 lbs. spring slaughter lambs 76.50-81, Choice 60-97 lbs. 65.50-73. Choice 35-50 lbs. spring lambs 79.50-84.50. Slaughter ewes 20.00-32. **GOATS 11:** 12.00-23 per head.

Carlisle Livestock

Carlisle, Pa.

Tuesday, March 12

Report supplied by auction

CATTLE: Steers: 1.00 higher. Low Choice 61.85-63.85; Good 54.00-60.00; Good Holsteins 50.00-58.00; Medium 53.00 down. Heifers: Steady to 1.00 higher. Choice none offered; Good 51.00-54.25; Medium 45.00-50.00; Utility 44.00 down. Cows: Steady. High Yield 43.00-46.35; Good 40.00-42.50; Medium 36.00-39.00; Big Middle 36.00-43.00; Shelly 35.00 down. Fat Bulls: Medium 44.75-48.50.

FEEDER CATTLE: Strong demand for Good & Choice Feeder Cattle. Steers (300-550 lb.) Steady. Good 55.00-62.50; Medium 50.00-54.00; Culls 49.00 down. Steers (600-850 lb.) 2.00 higher. Choice 61.00-63.00; Good 55.00-59.00; Medium 54.00 down. Heifers (all weights) Good 49.00-51.50; Medium 40.50-45.00. Bulls (all weights) Choice none offered; Medium 47.00-50.00.

VEAL CALVES: Good 70.00-80.00; Medium 60.00-69.00; Light 51.00-59.00, Few weak 50.00 down. Farm Bulls 75.00-81.00.

HOGS: Barrows & Gilts 210-250 lbs. 44.50-45.10; over 260 lb. 42.00-48.00; Under 190 lbs. 35.00-41.00; 2 & 3's 39.00-44.00.

SOWS: Heavy steady to 1.00 higher; Light 2.00 lower. Over 450 lb. 45.00-47.00; under 450 38.50-39.50; 2&3's 36.75-38.00. Boars: Heavy 32.50-33.00.

FEEDER PIGS (by the hd) (30-40 lbs. 37.00-43.00) (45-60 lbs. 43.00-47.00).

SHEEP: Lambs: Choice 70.00-75.00; Good 61.00-67.00. **EWES** 18.00-22.00 lb. Goats: (Lg) 44.00-51.00 (hd); Sm./Med 14.00-36.00 (hd).

Green Dragon Livestock Sales

Location: Ephrata RD 4, 1 mile N. on North State St., Ephrata.

COWS COWS COWS SALE EVERY FRIDAY

Lots of good Northern Feeder & Stockers. Slaughter Cows - Bull Steer, Veal-lamb.

11:00 A.M.-Beef Sale 200-300 each week.
1:00 P.M.-Dairy Sale.
7:00 P.M.-Small Animal Sale.

For Special Sales and Herd Dispersals on farm or at our barn or other market information call: Office 717-733-2444, Home 717-838-4318.

WALTER H. RISSER, Proprietor

All out of state and new buyers must have cash or certified check or current letter of credit from bank.



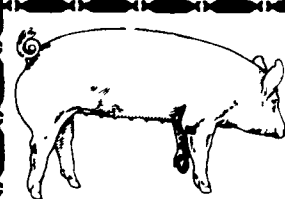
ATTENTION FARMERS

EVERY MONDAY
HATFIELD PACKING CO. and MOYER PACKING CO.

Will Receive Your Hogs and Cattle at the
DANVILLE LIVESTOCK MARKET
RD 4, Danville, PA

- We will receive your hogs from 8 AM to 12 Noon every Monday. Your hogs will be weighed and paid for immediately.
- We will also accept your sows & boars.
- Your cattle will be received from 12:30 to 5 P.M. We will either pay you for your cattle immediately or you may sell them dressed weight.
- There will not be a commission or yardage fee deducted from your check.
- You may call our office Monday morning and we will be able to tell you the base price for hogs for the day.

MELVIN M. LEHMAN - Owner
Danville Buying Station
Phone: 717-275-2880



EMERY'S BUYING STATION

OPEN TO RECEIVE YOUR MARKET HOGS

AT THE GREEN DRAGON MARKET, RD 4, EPHRATA, PA 17522 1 MILE NORTH OF EPHRATA ON NORTH STATE STREET.

HOURS: MONDAY, TUESDAY, and WEDNESDAY 6:00 A.M. to 11:30 A.M.
215-458-5677 Residence
717-733-9648 Office

YOU ARE PAID FOR YOUR HOGS IMMEDIATELY

Ken & Lois Emery, Proprietors

FRIDAY, APRIL 12 ON THE FARM MONTHLY BRED GILT SALE

Sale to Start Promptly at 1:00 P.M. Every 4 Weeks

Located 18 miles south of Lancaster, Pa., 6 miles south of Quarryville, take Rt. 272 to Little Britain, turn north, follow Little Britain Road to Jackson Road, right. 2nd farm, OR take Rt. 222, out of Quarryville to Cedar Hill Road to Little Britain Road to Jackson Road, left. Watch for sale arrows.

50 to 60 Head
Now selling our new hybrid gilts representing mostly York & Hampshire & Landrace cross. Bred for easier & less trouble over farrowing and better weight gains.

Validated Brucellosis Free Herd #169
Qualified Pseudorabies Free Herd #55

Hand mated with Breeding Dates

Local Trucker Available
No Hogs Sold On Commission

CHRIST A. BEILER
R.D. 2, Quarryville, Pa
JOHN B. STOLTZFUS
R.D. 1, Kirkwood, Pa

Abe Diffenbach, Auctioneer AU225L
NEXT SALE DATE MAY 10



Be Wise...
Check our prices before you buy!!

We will deliver in the Delmarva area

SPRAY MATERIALS

- | | | |
|------------------|-------------|-------------|
| * ATRAZINE | * BLADEX | * PRINCEP |
| * DUAL | * BANVEL | * EXTRAZINE |
| * LASSO | * LOROX | * COUNTER |
| * SUTAZINE | * TOXAPHENE | * DYFONATE |
| * ROUND UP | * PARAQUAT | * FURADAN |
| * LASSO-ATRAZINE | | * LORSBAN |

SAVE ON BULK HERBICIDES

• BICEP • LASSO-ATRAZINE • PROWL

MELVIN R. WEAVER

2213 Leabrook Road, Lancaster, PA 17601

Ph: 717-569-6576 or 898-8354