

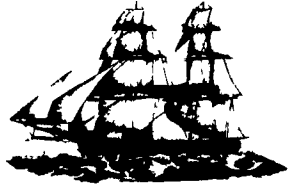
# Livestock market and auction news

## THE OLD FARMER'S ALMANAC

MARCH 11-17, 1985

Sun is showing, sap is flowing.

Repair screens, rakes and tools now Jack Kerouac born March 12, 1922  
Average length of days for the week, 11 hours, 51 minutes Last quarter of the  
moon March 13 (Wed) St Francis Dam in Santa Paula, Calif., collapsed, killing  
450, March 13, 1928 West Point Military Academy established March 16, 1802  
Nothing dries sooner than a tear



**Ask the Old Farmer:** A friend received a cut glass pitcher. It's about 6" high, 4 1/2" in diameter, and has a sterling silver rim. As there is no spout, it isn't really a pitcher, but it does have three handles. Have you any idea of its use? M.C.D., Chicago  
*It sounds like an old-time "toddy glass," which came in various styles. They hauled it out when the minister called and everyone present took a swig.*  
**Home Hints:** To remove grease from carpeting, brush in baking soda, let set overnight then vacuum.

### OLD FARMER'S WEATHER FORECAST

**New England:** Week begins with rain south, snow north, midweek mild temperatures and rain, snow in mountains, sunny and mild by week's end, showers possible.  
**Greater New York-New Jersey:** Rain, with gale force winds and mild temperatures at week's beginning, partly cloudy by midweek, cold and more rain to end week.  
**Middle Atlantic Coastal:** Beginning of week clear and mild, showers possible, midweek continuing mild temperatures and rain, clear and warm by end of week.  
(All Rights Reserved Yankee Publishing Incorporated, Dublin, NH 03444)

### New Wilmington Livestock

New Wilmington, Pa.  
Monday, March 4

Report supplied by PDA

**CATTLE 219.** Compared with last Monday's market, Slaughter cows 75 cents to \$1.00 lower. Few Choice slaughter steers 60.00-64.25, Few Good 54.00-57.50, Few Standard 49.00-52.75. Few Good slaughter heifers 51.50-54.00, Few Standard 46.50-47.75, Few Utility 40.00-43.00. Breaking Utility & Commercial slaughter cows 40.00-44.00, Cutter & Boning Utility 36.00-40.75, Canner & Low Cutter 29.75-36.00, Shells down to 20.00. Yield Grade No. 1 1200-2080 lbs. slaughter bulls 45.00-50.50.

**FEEDER CATTLE:** Few steers Medium Frame #1 385-550 lbs. 56.50-58.00; Few Heifers Medium Frame #1 360-470 lbs. 45.50-51.00; Bulls Medium Frame #1 540-800 lbs. 48.00-55.00.

**CALVES 309.** Couple Prime Vealers 95.00 and 98.00, Few Choice 77.00-88.00, Good 63.00-70.00, Standard & Good 90-130 lbs. 40.00-48.00, 65-85 lbs. 30.00-40.00, Utility

50-75 lbs. 20.00-25.00.

**FARM CALVES:** Holstein bulls 95-135 lbs. 52.00-59.00, Holstein heifers 90-130 lbs. 40.00-50.00.

**HOGS 524.** Barrows & gilts 25 cents-50 cents lower. US No. 1-2 215-255 lbs. barrows and gilts 44.75-45.25, No. 1-3 200-265 lbs. 43.50-44.85, No. 1-3 185-200 lbs. 40.00-43.00. **SOWS:** Steady. US No. 1-3 340-570 lbs. sows 38.00-44.50. **BOARS:** 30.00-37.00.

**FEEDER PIGS 22.** One Lot US No. 1-3 20 lbs. feeder pigs 17.00 per head, One Lot No. 1-3 30 lbs. 22.00.

**SHEEP 48.** Choice & Prime 70-100 lbs. 71.00-81.00, Couple Lots Choice Shorn Lambs 64.00 & 69.00. Slaughter ewes 12.00-24.00.

### Morrison Cove Livestock

Martinsburg, Pa.  
Monday, March 4

Report supplied by auction

**CATTLE 245.** Choice slaughter steers 61.50-62.25, Good 56.00-61.10, Standard 51.10-54.25, Utility 45.50-49.25. Choice slaughter heifers 60.00-62.10, Good 54.50-58.25, Standard 50.25-53.10, Utility 42.00-

48.00. Breaking Utility & Commercial slaughter cows 45.10-47.25, Commercial 42.10-44.25, Cutter & Boning Utility 38.00-41.25, Canner & Low Cutter 33.00-36.00, Shells down to 22.00. Choice slaughter bullocks 48.50-51.25, Good 45.00-46.10, Standard 41.75-44.25, Utility 38.00-40.50.

**FEEDER CATTLE:** Choice (all weights 300-600 lbs.) steers 58.00-62.00, Good 53.00-56.00, Medium 44.00-51.00. Good heifers 51.00-56.00, Medium 41.00-48.00. Good bulls 51.00-56.00, Medium 42.00-48.00.

**CALVES 336.** Prime vealers 84.00-89.00, Choice 76.00-82.00, Good 67.00-74.00, Standard & Good 110-130 lbs. 54.00-57.00, 90-110 lbs. 50.00-53.00, 70-90 lbs. 46.00-49.00, Utility 40-60 lbs. 40.00-45.00. **FARM CALVES:** Holstein Bulls 90-130 lbs. 75.00-101.00, Holstein Heifers 95-130 lbs. 58.00-66.00.

**HOGS 173.** US No. 1-2 220-240 lbs. barrows and gilts 46.00-46.35, No. 1-3 2-260 lbs. 44.00-45.50, No. 2-3 180-195 lbs. 41.10-43.25. US No. 1-3 350-600 lbs. sows 42.00-45.50, No. 2-3 37.25-41.10. **BOARS** 28.75-30.50, light weights 31.00-34.25.

**FEEDER PIGS 46.** US No. 1-3 20-25 lbs. feeder pigs 18.00-22.00 per head, 30-40 lbs. 24.00-29.00, 45-60 lbs. 32.00-36.00 per head.

**SHEEP 1.** One Buck lamb at 33.00.

**GOATS 13:** 24.00-46.00 per head.

### Central U.S. Carlot

Pork Report

Wednesday, March 6

Report supplied by USDA

Compared to Tuesday's 4:00 report: Fresh Pork Loins 14-17 lbs. firm. Picnics \$3.00 lower. Boston Butts steady. Skinned Hams steady to \$1.00 lower. Sdls Bellies steady to \$2.00 higher. Trade slow to moderate except very active on Skinned Hams. Demand and offerings moderate.

Sales reported on 62 loads of Fresh Pork Cuts & 4 loads of Trimmings and Boneless Processing Pork.

Fresh Pork Cuts

**LOINS (Regular):** 14-17 lbs. 92.00, firm.

**PICNICS:** 4-8 lbs. 40.00, 3.00 lower; 8&up lbs. few 40.00, 3.00 lower.

**BOSTON BUTTS:** 4-8 lbs. 62.00, steady.

**HAMS (SKINNED):** 14-17 lbs. 73.00, weak; 17-20 lbs. 70.00, load 71.00, steady; 20-26 lbs. 67.00, id. 68.00, steady-1.00 lower.

**BELLIES (Sdls - Skin On):** 12-14 lbs. 63.00-64.50, steady-.50 higher; 14-16 lbs. 63.00-65.00, steady-2.00 higher; 16-18 lbs. 62.00-63.00,

steady-1.00 higher; 18-20 lbs. 55.00-56.00; 20-25 lbs. few 53.00.

Pork Trimmings

Boneless Processing Pork (Chemical Lean)

42% Lean Trimmings Fresh 40.00-41.00.

72% Lean Trimmings Fresh 67.25-69.00, steady to weak.

Jowls, Fresh 32.00.

### Jersey Shore, Pa.

Thursday, February 28

Report Supplied by Auction

Return to Farm Calf 65.00-82.00.

Good Veal 55.00-77.00.

Common Veal 43.00-54.00.

Choice Steers 61.00-64.50.

Good Steers 55.00-60.00.

Common Steers 44.00-54.00.

Commercial Cows 41.00-44.75.

Canners-Cutters 37.00-40.50.

Shells 28.00-36.00.

Choice Heifers 58.00-60.50.

Good Heifers 51.00-57.00.

Common Heifers 44.00-50.50.

Good Feeders 50.00-54.00.

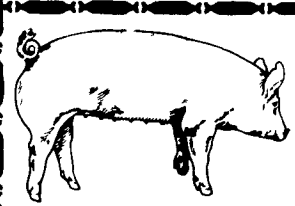
Common Feeders 42.00-49.00.

Bulls 45.00-53.00.

Sows 36.00-38.50.

Roughs 27.50.

Eggs 65.00-75.00.



### EMERY'S BUYING STATION

OPEN TO RECEIVE YOUR MARKET HOGS

AT THE GREEN DRAGON MARKET RD 4, EPHRATA, PA 17522 1 MILE NORTH OF EPHRATA ON NORTH STATE STREET.

HOURS: MONDAY, TUESDAY, and WEDNESDAY 6:00 A.M. to 11:30 A.M. 215-458-5677 Residence 717-733-9648 Office

YOU ARE PAID FOR YOUR HOGS IMMEDIATELY

Ken & Lois Emery, Proprietors

### FRIDAY, MARCH 15 ON THE FARM MONTHLY BRED GILT SALE

Sale to Start Promptly at 1:00 P.M. Every 4 Weeks

Located 18 miles south of Lancaster, Pa., 6 miles south of Quarryville, take Rt. 272 to Little Britain, turn north, follow Little Britain Road to Jackson Road, right. 2nd farm, OR take Rt. 222, out of Quarryville to Cedar Hill Road to Little Britain Road to Jackson Road, left Watch for sale arrows.

50 to 60 Head

Now selling our new hybrid gilts representing mostly York & Hampshire & Landrace cross. Bred for easier & less trouble over farrowing and better weight gains.

Validated Brucellosis Free Herd #169 Qualified Pseudorabies Free Herd #55

Hand mated with Breeding Dates

Local Trucker Available No Hogs Sold On Commission

CHRIST A. BEILER R.D. 2, Quarryville, Pa  
JOHN B. STOLTZFUS R.D. 1, Kirkwood, Pa

Abe Diffenbach, Auctioneer AU225L NEXT SALE DATE APRIL 12

## Green Dragon Livestock Sales

Location: Ephrata RD 4. 1 mile N. on North State St., Ephrata.

# COWS COWS COWS

## SALE EVERY FRIDAY

Lots of good Northern Feeder & Stockers. Slaughter Cows - Bull Steer, Veal-lamb.

11:00 A.M.-Beef Sale 200-300 each week.  
1:00 P.M.-Dairy Sale.  
7:00 P.M.-Small Animal Sale.

For Special Sales and Herd Dispersals on farm or at our barn or other market information call: Office 717-733-2444, Home 717-838-4318.

**WALTER H. RISSER, Proprietor**  
All out of state and new buyers must have cash or certified check or current letter of credit from bank.

## ATTENTION FARMERS

**EVERY MONDAY HATFIELD PACKING CO. and MOYER PACKING CO. Will Receive Your Hogs and Cattle at the DANVILLE LIVESTOCK MARKET RD 4, Danville, PA**

- We will receive your hogs from 8 AM to 12 Noon every Monday. Your hogs will be weighed and paid for immediately.
- We will also accept your sows & boars.
- Your cattle will be received from 12:30 to 5 P.M. We will either pay you for your cattle immediately or you may sell them dressed weight.
- There will not be a commission or yardage fee deducted from your check.
- You may call our office Monday morning and we will be able to tell you the base price for hogs for the day.

**MELVIN M. LEHMAN - Owner Danville Buying Station Phone: 717-275-2880**

Be Wise ...  
Check our prices before you buy!!

We will deliver in the Delmarva area.

# SPRAY MATERIALS

|                   |             |             |
|-------------------|-------------|-------------|
| * ATRAZINE        | * BLADIX    | * PRINCEP   |
| * DUAL            | * BANVEL    | * EXTRAZINE |
| * LASSO           | * LOROX     | * COUNTER   |
| * SUTAZINE        | * TOXAPHENE | * DYFONATE  |
| * ROUND UP        | * PARAQUAT  | * FURADAN   |
| * LASSO- ATRAZINE |             | * LORSBAN   |

SAVE ON BULK HERBICIDES

• BICEP • LASSO-ATRAZINE • PROWL

## MELVIN R. WEAVER

2213 Leabrook Road, Lancaster, PA 17601  
Ph: 717-569-6576 or 898-8354