

Public Auction Register

FRI. JULY 12 - 1:30 PM
Public Auction of PA State
Graded Feeder Pigs.

Carlisle Livestock Market
Inc. Exit 12 off I-81. 717-
249-4511.

SAT. JULY 27 - Geet
Ministries. Martin Sale
Barn. Steve Petersheim,
Auctioneer.

AUGUST

FRI. AUG. 2 - 9 AM Farm
Equipment. New Holland

Sales Stables, Inc.,
Auctioneers.

FRI. AUG. 9 - 1:30 PM
Public Auction of PA State
Graded Feeder Pigs.
Carlisle Livestock Market
Inc. Exit 12 off I-81. 717-
249-4511.

SAT. AUG. 10 - 12 Noon
Sixth Prince Plaudit
Production Sale. Rimwood
Ranch, Strattanville, PA.
Appaloosa Horses. Dave
Seahman, Owner. Red
Carpet Horse Sale, Inc.

SEPTEMBER

FRI. SEPT. 6 - 7 PM
Holstein Promotion. New
Holland Sales Stables,
Inc., Auctioneers.

Lancaster Farming, Saturday, March 9, 1985-E41

FRI. SEPT. 13 - 9 AM
Farm Equipment. New
Holland Sales Stables,
Inc., Auctioneers.

FRI. SEPT. 13 - 1:30 PM
Public Auction of PA State
Graded Feeder Pigs.
Carlisle Livestock Market
Inc. Exit 12 off I-81. 717-
249-4511.

SAT. SEPT. 14 - Honey
Brook Fire Co. Quilt Sale.
Steve Petersheim,
Auctioneer.

SAT. SEPT. 28 - 10 AM
Fall Heifer Sale. New
Holland Sales Stables,
Inc., Auctioneers.

SAT. SEPT. 28 - 12 Noon.
Red Carpet Catalog Reg.

Horse Sale. Cambria Co.
Fair Grounds, Ebensburg.
PA. Red Carpet Horse
Sale, Inc.

OCTOBER

SAT. OCT. 5 - 9 AM Red
Carpet Fall Draft &
Driving Horse Sale-
Cambria Co. Fair
Grounds, Ebensburg, PA.

FRI. Oct. 11 - 1:30 PM
Public Auction of PA State
Graded Feeder Pigs.
Carlisle Livestock Market
Inc. Exit 12 off I-81. 717-
249-4511.

WED. OCT. 30 - 9 AM
Dairy Show. New Holland
Sales Stables, Inc.

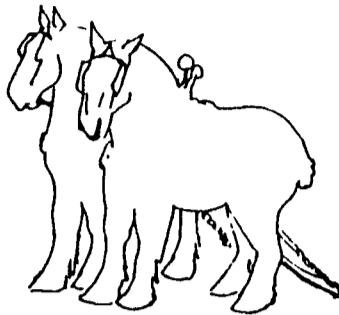
Dairy and Livestock Sales

Red Carpet Horse Sale Co.

SPRING DRAFT AND DRIVING CATALOGUED HORSE SALE

SATURDAY, APRIL 20, 1985
Cambria County Fair Grounds

Route 219 North Ebensburg, PA
9:00 AM Tack and Equipment
12:00 Noon Horses



We at Red Carpet Horse Sale Company, are inviting you to join us at our Spring Catalog Draft and Driver Horse Sale.

We will be selling a good selection of Registered Belgians, Percherons, Clydesdales, and grade Draft Horses, Mules and Driving Horses. We will have tack, harness, equipment and horse trailers. If you are buying or selling Quality Draft Stock or Equipment the RED CARPET HORSE SALE is the place to be!!

BUYERS TERMS: Cash, Certified Check or current letter of credit from your bank to guarantee all personal checks

SELLERS: Catalog fee \$35 00 1-3 head, \$30 00 4-6 head, over 10 head call for price 7% commission, \$10 pass out 10% Tack and Equipment

Catalog deadline March 20... Consignments accepted till sale day

Stalls available Friday, April 19, 1985 at 12:00 noon

Managers & Owners Auctioneers
Kevin Hines & Chris Rowe Benny Davis & Wayne Templeton

For Information Call (814) 886-4864 or 886-4153

RED CARPET HORSE SALE CO.-P.O. BOX 234-Cresson, PA 16630

Members AQHA-PQHA-PAA

F - L - R

REGISTERED DAIRY HERD DISPERSAL

Complete Milking Herd and Springing Heifer Dispersal

FRIDAY, MARCH 15, 1985

11:00 A.M.

Located in Perry County, 45 miles northwest of Harrisburg, Pa., on Pa. Rt. 274, 9 miles west of Loysville, 2 miles east of Blain.

60 Head of Registered Holsteins 60

Herd has been over 19,000m 700 fat for last 3 years.

BAA 104 for 1984

Classification - 1 EX, 16 VG, 16 GP, 9 G (none lower)

Calhood Vaccinated • Certified & Accredited • 30 day Test

Selling are 50 Milking animals and 10 springing heifers.

"This dairy has been highly influenced by Kingpin and Elevation over the past years and many animals trace back to these two great sires."

Selling are 8 daughters of Elevation, 7 by Kingpin, 2 S-W-D Valiants, 4 Milestones, Sexation, 3 by Conductor, Betty Chief, Mars, Marvex, Majesty, Cittamat, Ivanhoe Star, Bootmark and many more.

Service Sires include: 4 bred to Elevation, 2 to Kingpin, 6 bred to Chairman, Roybrook Tempo, Conductor, Mars Tony, Pete, CAR Dairyman, Hilltopper Warden and more.

Some featured animals include:

EX Kingpin with 20,900 4.1% bred to Elevation - Dam is an 88 pt. Charmcross with over 125,000.

Also selling are 2 pregnancies from the EX Kingpin by Elevation due 10 days after sale - Receipts are deep pedigreed heifers from VG dams.

Selling also is a 2 yr. old daughter of the EX Kingpin sired by Conductor making 15,000 4.0% - due in May to Pete.

An 88 pt. Conductor with EX Mammary - maternal sister to EX Kingpin - make 21,800 - due in August to Elevation.

Her daughter 88 pt. 4 yr. old Clinton Camp Majesty with EX Mammary - made 17,000 3.9 as a three year old - selling fresh.

"This is a great family of hig-producing, high testing and high scoring animals!"

An 87 pt. Bootmark with EX MS - made 20,700 655f - selling fresh and milking in the 90's - Dam is an Elevation dtr. with over 100,000 - Milked 132 lb. per day. Her S-W-D daughter also sells - due in May.

A VG Elevation selling fresh - 2 year record 21,893m 711f - Index 754 Dam is 89 pt. Rocket with 27,600 975 fat.

Daughter by Cavalier carrying an EX Kingpin pregnancy also sells - "Here is an opportunity to buy into 2 great cow families at one time."

A Glen Valley Star selling fresh, GP at 2 yr. making 15,000 - Dam a VG Kingpin with 28,900 1100f - Gr. Dam 86 pt. Elevation with 24,000m 1000f - 3rd Dam also Very Good.

This is a young herd with something for everyone; from deep pedigrees to good young dairy cows and first-calf heifers that are very pleasing to the eye."

Herd is averaging 65 lb. per cow in the tank right now.

15 Animals fresh between Jan. 1 and Sale Date - 10 First-calf heifers due for early Summer - Balance are in different stages of lactation

Sale by:

For Catalogs Contact:

FRANK & LORENA RICE, Owners

Blain, Pa. 17006

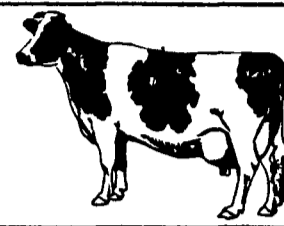
(717) 536-3241

William Kent, Pedigrees

Bergen, N.Y.



R.D. 1, Landisburg, PA 17040
Tel. (717) 789-3883 789-3616
License No. AU-000560-L



NEW HOLLAND SALES STABLES, INC.

12 Miles East of Lancaster, Pa. just off Rt. 23, New Holland, Pa.

DAIRY SALE CONSIGNMENTS

For

WEDNESDAY, MARCH 13, 1985

30 HEAD PUREBRED AND GRADE CANADIAN COWS, FRESH AND SPRINGERS.

20 REGISTERED, 10 GRADES, 15 JUST FRESH.

1 VG 4 YEAR OLD SIRED BY NED.

CONSIGNED BY KEVIN BOWSER.

- * 1 Load Purebred & Grade Canadian Cows, Fresh & Springers, Consigned by Leroy Smucker.
- * 1 Load Purebred and Grades, Fresh and Springer Cows, consigned by H.D. Matz.
- * 1 Load Fresh and Springer Cows Consigned by Norman and David Kolb.
- * 1 Load Fresh and Springer Cows Consigned by Merle Breneman.
- * 1 Load Fresh Cows Consigned by Alfred Albright.
- * 1 Load Fresh and Springer Cows Consigned by Raymond Smucker.
- * 1 Load Fresh and Springer Cows Consigned by Marvin Eshleman.

FIFTH ANNUAL PENNSYLVANIA WORLD RELIEF HEIFER SALE

THURSDAY, MARCH 14, 1985

At the Guernsey Sales Pavilion, Lincoln Highway East, Lancaster, Pa.

Sale Time Hay-Straw 10:30 AM; Heifers 11 AM

Selling 78 head of Holsteins, 62 Reg. & 16 High Grade Holsteins from Dams records up to 28,288 lb. milk, 1020 lb. fat. Heifers all ages, Open Heifers, Project Heifers, Heifers Breeding Age, Also Some Bred Heifers For Early Summer and Fall Freshening.

Special mention: A Glendell ET Heifer Calf born 12-18-84 from two generations excellent dam's. The dam an Excellent Elevation with 28,288 lb. milk 943 lb. fat. The second dam is an Excellent Kingpin dtr. with 28,960 milk 978 lb. fat. This is a real sharp calf you won't want to miss.

Also a heifer born 10-14-83 sires by Conductor, An ET heifer from an Excellent Kingpin dtr with 24,116 lb. milk 825 lb. fat. A Jemini dtr from a 24,194 lb. milk 4.2% test 1020 lb. fat. A dtr. by Ivanhoe Jay-Wil Chief from an Ex dam with 27,333 M 970 fat. Second dam Ex 3E 92 points with 25,190M 862 F, a Sexation dtr. from a 23,951 lb. dam. Next two dams over 22,000. An Astro Mat dtr. from a 3 generation high test family with the grandam's records up to 28,559M 4.2% test 1205 fat, next dam has 25,850M 4.3% 1112 fat. A Very dtr. from a 23,733 lb. dam, a Superior dtr from a 22,448 lb. dam, a Marsfield Elevation dtr. from a 20,344 lb. dam, a Columbus dtr. from a dam with 7 records up to 19,490 milk. A Red Calf sired by Fagan. Many more from high record dams and sired by popular sires. This sale offers some real fine pedigreed animals.

Be sure to come to this sale at the Guernsey sales pavilion on march 14, 1985. This is the best group of animals we have ever had for this donation sale. Thanks to the Consignors for their fine corporation for this sale.

Cattle will be tested within 30 days of sale to go anywhere. Catalogs available at ringside or from sales manager. Donations will be accepted of hay, straw, corn, small grains, farm supplies, firewood, farm seeds, etc.

Auctioneers

John Umble 215-593-5756 Atglen, Pa.

Lee Kurtz 215-593-5387 Cochranville, Pa.

Omar Stoltzfus 717-529-6301 Oxford, Pa.

Pedigrees

Dale Hoover 717-867-2489 Lebanon, Pa.

Semen

Galen Martin 215-445-4417 Manheim, Pa.

All sale proceeds will be donated to MCC - Mennonite Central Committee, Akron, Pa. to help clothe the needy and help feed the hungry of the world in the name of Christ.

Lunch by the relief sale food committee.

Sales Manager

Wilmer G. Kraybill

Elverson, Pa. 215-286-9576

