

Public Auction Register

Closing Date Monday 5:00 P.M.
of each week's publication

TUES. APR. 16 - NY State Calf Sale, Syracuse, NY. The Cattle Exchange, Auctioneers.

TUES. APR. 16 - 9 AM Powerline Equipment of H.P. Foley Co., Located Salt Lake City, Utah. Vilsmeier Auction Co. Inc.

WED. APR. 17 & THURS. APR. 18 - Leachman Cattle Company's Annual Production Sale of 800 bulls & 500 females at the Ranch S. of Billings, Montana.

FRI. APR. 19 - 9 AM Farm Equipment. New Holland Sales Stables, Inc., Auctioneers.

FRI. APR. 19 - Holstein Heifer Sale 6PM. Also Feeder Pigs & Feeder Cattle. Keister's Middleburg Auction, Middleburg, PA.

SAT. APR. 20 - Public Auction of Antiques & Hshld. Goods. Location: Durlach, PA. Ernest & Jo-Ann Schreiber, owners.

Paul E. Martin & John D. Stauffer, Auctioneers.

SAT. APR. 20 - 9 AM Large 12th Annual Public Auction. Farm Mach., Industrial Eq., Trucks & Trailers, Tools Tires, etc. Located Garden Spot Auto Auction, Apple & Robert Streets, along Rt. 322, Ephrata, PA. J. Omar Landis Auction Service. Jay M. Witman.

SAT. APR. 20 - 9 AM Spring Draft & Driving Catalogued Horse Sale. Located Cambria Co. Fair Grounds, Rt. 219 N., Ebensburg, PA. Red Carpet Horse Sale Co.

SAT. APR. 20 - Nescopeck Twp. Fire Co. 10th Annual Consignment Auction. To Consign call 717-379-3807/379-3057.

SAT. APR. 20 - 10 AM Public Auction of 6 Tractors, Farm Eq., Hshld. Items. Along the Herndon to Red Cross Rd. (Next to Camp Meeting Grounds), 2 mis. E. of Rt. 147 & Borough of Herndon; 15

mis. S. of Sunbury. Mr. & Mrs. Richard Warfel, Owners. Mike & George Deibert, Auctioneers.

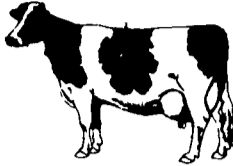
COMPLETE DISPERSAL

SATURDAY, MARCH 16, 1985

At 12:30 P.M.

1 Mile South of Jackson, Pa. Along Rt. 92 (Exit #64 at Lenox, off I81, go 11 Miles). Susq. Co. Arrows!

30 HOLSTEINS
(3 Jerseys)



5 reg. cows & 4 eligible to reg. hfrs. 17 mature cows, 3 bred hfrs., 5 8-11 mos. hfrs, 3 started hfrs. All Eastern Breeding, 2 bred Cavalier daughters, 2 Veal daughters, an Executive, Troy, Oxford, Jethro, etc. 4 cows fresh (one a Jersey) most will freshen June thru Sept. Vet examined, shots & health charts.

MACHINERY

M.F. 230 tractor, p/s, L/P, 3 pt. about 600 hours. M.F. wheel rake, M.F. 3 pt. mower, 2 yrs. old, Ford baler, bale elevator, N.H. #213 spreader, 100 bu., J.D. 3 pt. backblade, stock tanks, etc.

MILKING EQUIP.

Nu-Pulse pipeline, 100 ft. 2" & 100 ft. 1 1/2" line, 2 units, controls, washer. Nu-Pulse vacuum pump w/oil reclaim, Nu-Pulse heat exchanger with 66 gal. tank, all Nu-Pulse equip. used 2 yrs. John Wood 400 gal. tank (new compressor).

Patz barn cleaner, used 2 yrs., 260' chain, runs counter clockwise w/12" paddles.

Terms- Cash or Approved Check.

Owner-ROBERT ZIDONIK

Jim Adriance - Auctioneer AU4L
Montrose 278-1574

DAIRY CATTLE SALE



FRIDAY, MARCH 22, 1985

12:00 Noon

PENNS VALLEY LIVESTOCK AUCTION

CENTRE HALL, PA.

(At The Intersection of Rt. 45 & 144)

CONSIGNED:

WILLIAM HOMAN
COMPLETE HERD DISPERSAL
44 HEAD

31 COWS (8 Reg)

3 BRED HEIFERS (1 Reg)

10 OPEN HEIFERS (6 ID Grades)

* 13 COWS TO FRESHEN FROM MARCH 27th THRU APRIL 30th.

PLUS: 10-15 REGISTERED HEIFERS -
SELECTED FROM LOCAL FARMS

NOTICE: DAIRY SALE HELD FOURTH
FRIDAY OF THE MONTH. NEXT SALE -
DAIRY & HEIFERS ALE - APRIL 28th

HEALTH CHARTS FURNISHED
FOR MORE INFORMATION CALL:
SCOTT L. YOCUM
(814) 364-9096 466-3150

250-350 HEAD SPECIAL HORSE SALE WORK HORSES-MULES & DRIVING HORSES

FRIDAY MARCH 22, 1985

Tack 9:00 A.M.
Sale 10:00 A.M.

AT NEW HOLLAND
SALES STABLES, INC.

12 Miles East of Lan-
caster, Pa. just off Rt. 23,
New Holland, Pa.



- * 2 Load Work Horses and Mules consigned by Ward Wright.
- * 1 Load Work Horses & Mules Consigned by Norman Kolb.
- * 1 Load Work Horses and Driving Horses consigned by Bud Leonard.
- * 1 Load Work Horses Consigned by Steimer Bros.
- * 1 Load Driving Horses consigned by Clayton Waterbury.
- * 1 Load Driving Horses consigned by Jonas Beiler.
- * 1 Load Driving Horses consigned by Reuben G. Stoltzfus.
- * 1 Load Driving Horses consigned by Elam B. Stoltzfus.

Plus many more consignments by sale time.

For more information contact:

Abe Diffenbach, Mgr. Norman Kolb
717-354-4341 717-397-5538
Next Horse Sale Fri. April 12-7 P.M.

PUBLIC AUCTION

Located 7 1/2 miles south of Frederick, MD off I-270 on Route 85 to Lily Ponds Road, 1 1/4 mile to Parks Mill Rd. - North 3/4 mile (second lane on right).

MONDAY, MARCH 18, 1985

10:30 A.M.

40 HEAD OF HOLSTEIN
HEIFERS 40



Consisting of all open heifers from approx. 500 lbs. to breeding age. A good clean group of heifers that are worthy of your attention. Bangs & T.B. tested for interstate shipment.

THREE JOHN DEERE TRACTORS,
COMBINES & GOOD EQUIPMENT

John Deere 4430 diesel tractor w/roll bar, power shift, W.F., P.S.; John Deere 4230 diesel tractor w/sound roll guard, air, powershift, W.F., P.S.; John Deere 4010 diesel tractor w/roll guard, W.F., P.S.; John Deere 6600 self-propelled diesel combine w/13 ft. small grain head; JD 443 four row corn head; 1974 Gleaner F diesel corn & soybean special combine; 13 ft. Heiniker Flex head - quick attach; 438 four row corn head, quick attach; New Holland 472 haybine, 2 yrs. old; New Idea 7 ft. cut-ditioner; New Holland double bar hay rake; Massey Ferguson 4 bar hay rake; John Deere 347 baler w/kicker; Massey Ferguson 124 baler w/kicker; John Deere 40 ft. & New Holland 38 ft. elevator; 2 pipe hay wagons; 4 wooden hay wagons; White 6 row no-till corn planter w/liquid fertilizer & insecticide boxes; Oliver 150 bu. manure spreader; Century 300 gal. pull sprayer; 125 gal. poly tank w/John Blue squeeze pump; Little Rhino 3 pt. scraper blade & stone rake; Glencoe 9 shank soil saver; Brillion 3 pt. 10 ft. 10 shank chisel plow; John Deere 12 ft. off-set transport disc w/24 in. disc; Massey Ferguson 520 transport 11 ft. disc; White 252 transport 10 ft. disc; Atlas 16 ft. grain body w/4 ft. sides.

1965 Int. truck w/14 ft. Parkhurst body w/hoist, 5 speed trans.
Approx. 1500 bales of mixed hay.

TERMS-Cash-not responsible for accidents.

ROBERT P. COTTER

Home Phone: (301) 349-5343
after 6:00 p.m.

Farm Phone: (301) 874-5655

AUCTIONEER: Robert C. Mullendore

CLERK: C.L. Metz

Lunch Rights Reserved

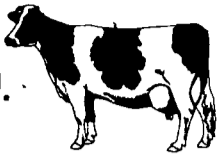
EASTERN SHORE SHOWCASE SALE

50 REGISTERED HOLSTEIN CALVES & HEIFERS

SATURDAY, MARCH 16, 1985

11:00 A.M.

Hunters Sale Barn, Rising Sun, Md.
Many Born Right For Showing



FEATURING

- 3 daughters of SWD Valiant- One from 2 gen. VG over 21,000m, one from VG dam 19,189
- Own daughter of Glendell Arlinda Chief from VG-88 Wayne with 19,130 milk.
- Two Tony's from VG and +83 dams-records to 23,386m 949f.
- Three Columbus from VG and + dams-records to 21,780m 854f.
- Four Chairman from VG and + dams-records to 21,010m 695f.
- Four Spirit's from VG and + dams-records to 18,980m 669f.
- Three Bell's from VG and + dams-records to 20,046m 765f.

Also daughters of Astro-Matt, Apollo J, Sexation, Ira, Simon, Standard, Glenview Joe, Holler View Marc, Wileeda and Cavalier.

Most dams scored VG or G+ with completed records to 25,510m 909f.

There will be a nice group of bred heifers selling.

Sponsored by Cecil, Harford, Baltimore, Kent,
Queen, Anne, and Delaware Holstein Clubs.

Co-Chairmen: Steve Wilson, Bob Knutsen

For catalogs and Information-
Bob Knutsen, Rising Sun, Md. 21911
301-658-6325

AUCTION

DAIRY CATTLE AND HORSES
FRIDAY, MARCH 22, 1985

AT 11:00 A.M.

130 HIGH GRADE HOLSTEIN
COWS & HEIFERS 130
2 ARABIAN HORSES 2

HAVING LISTED MY FARM FOR SALE I AM DISCONTINUING MY DAIRY OPERATION located on our farm located along the west side of Green Valley Rd. (Rt. 75) approx. 1 1/2 mi. south of the Junction of Rts. 80 & 75 (near the drag strip). South from Frederick City via Rt. 270 to Urbana take Rt. 80 east. From Damascus go west on Rt. 27 to Rt. 80 at Kemptown to Rt. 75, Frederick County, MD. Follow sale signs.

110 QUALITY
HOLSTEIN COWS 110

20 QUALITY HOLSTEIN
HEIFERS 20



THIS HERD CONSISTS of 110 high quality grade cows with 30 fresh in the last 60 days and 20 due between now and sale day. Also approx. 20 are due in April & May. The balance of the herd are in different stages of lactation with several July & August cows.

20 HEIFERS 20

15 yearling open heifers and 5 bred heifers which have been with bull approx. 6 weeks. These heifers are sired by an Astronaut son out of Ex. 90 point dam with 4.6 test, raised out of some of the better cows.

HORSES

4 Year Old Arabian Mare-Broke To Ride
Yearling Arabian Stallion Colt

HEALTH: All cows have been tested for interstate shipment and checked for pregnancy within 30 days of sale. Horses have recent coggins vaccination.

NOTE: The cows selling have much dairy character and good udders. Several of the fresh cows are milking 70 to 80 lbs. The Savage's have used several top bulls for over 20 years with most of his cows being home raised. If you need spring & summer milk don't miss this sale.

TERMS: Cash or Check on sale day. Not responsible for accidents.

MR. & MRS. MARTIN L. SAVAGE, SR.

3602-D Green Valley Rd.
Ijamsville, MD

For Further Information on Real Estate
& Livestock Contact:

SINCE 1920



15 North Court Street/Frederick, Maryland
301/663-1555

"Experience Doesn't Cost-It Pays!"

Or Randy Ruby at 301-898-3673

Lunch Available