

Ralston Purina gives \$50,000 to Penn State

CAMP HILL, PA — Ralston Purina Company has pledged \$50,000 to Penn State's Ag Arena, the largest corporate gift to date in the fund-raising campaign.

Thomas T. Potterfield, Director of Operations of Ralston Purina's North Atlantic Area, presented University officials with a check for the first \$20,000 installment in Dec. 5 ceremonies at the company's Camp Hill plant.

The gift was made through the Ralston Purina Trust Fund and is the company's largest ever in Pennsylvania. In recognition of the commitment, the Ag Arena's main conference room will bear the company's name.

Representing Penn State at the ceremonies were University Trustee Obie Snider, chairman of the campaign committee. Samuel H. Smith, dean of the College of Agriculture, and J. Luther Snyder, Deputy Secretary of Agriculture, also attended.

"The Ag Arena is already one of the most used facilities at Penn State," Smith said. "The Ralston Purina gift represents not only a handsome contribution of much-needed dollars but also a vote of confidence in Penn State and Pennsylvania agriculture."

Potterfield said that although Ralston Purina is headquartered

in St. Louis, Mo., "Our roots are deep in Pennsylvania agriculture and our future is dependent upon it."

(Ralston Purina owns six plants in the state for manufacturing feed for livestock, poultry and pets — including two opened in the last two years in Lancaster and in Wyalusing, Bradford County.)

In addition, Potterfield said, "Penn State, in our opinion, is one of the top agriculture universities in the nation. We regularly recruit there, and a high percentage of our sales force are Penn State graduates. They are some of the best-trained people we have."

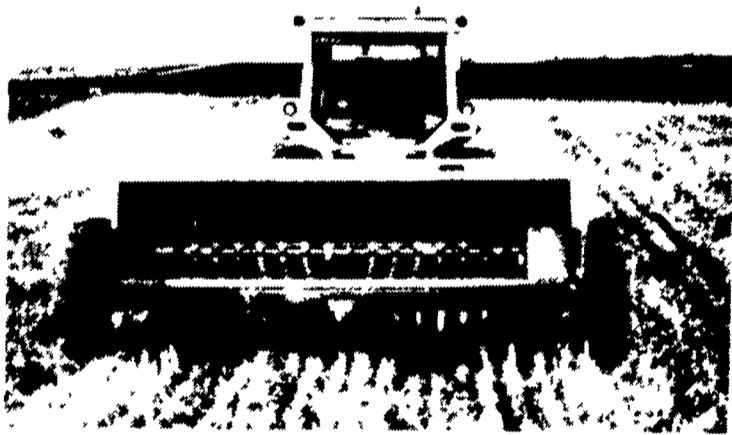
The Penn State Ag Arena is being build entirely with private support and has received more than 6,000 gifts during the five-year fund-raising campaign. At an estimated cost of \$1.8 million, it is the second largest such project undertaken at the University (the Philip M. and Barbara Greenberg Indoor Sports Complex, at \$2.6 million, ranks highest).

The main arena building housing a large show ring, conference room, offices and other meeting areas, was recently completed. A contractor will be chosen this winter to build a smaller holding-and-preparation center next door.



Penn State and Ralston Purina officials look over plans for the university's new Ag Arena, after company officials announced the firm would donate \$50,000 to school's fund-raising campaign for the structure. Picture from left are Purina's Harrisburg Production Manager Tom VanLone; Rex Richards, Sales Manager for the firm's Northeast Chow Consumer Division; Obie Snider, a university trustee and chairman of the fund-raising campaign, holding a \$20,000 check representing the company's first installment; Tom Potterfield, director of Operation in Purina's North Atlantic Area; Samuel H. Smith, dean of the university's College of Agriculture; Glenn Shields, sales manager in Purina's Chesapeake Sales Division; and J. Luther Snyder, Deputy Secretary of Agriculture. Company officials also gave credit to Gary Anderson, sales manager for Purina's Keystone region, who was not available for the photography session.

Lilliston 9680 NO-TILL GRAIN DRILL



For Heavy Stubble and Hard Soils

The new Lilliston 9680 No-Till Grain Drill will operate in maximum severe conditions, where uniform penetration of heavy stubble and hard soils is required. Unlike some of the so-called "no-till" drills available today, which are actually conventional drills with front coulters added, the Lilliston is designed, from the ground up, for one purpose: No-till seeding.

CHAMBERSBURG FARM SERVICE
Chambersburg, PA
717-264-3533

LONG ACRES SALES & SERVICE
Tionesta, PA
814-744-8454

OXFORD GREENLINE, INC.
Oxford, PA
215-932-2753

ERB & HENRY EQUIPMENT
New Berlinville, PA
215-367-2169

M&R EQUIPMENT INC.
New Park, PA
717-993-2511

PETERMAN FARM EQUIPMENT
Carlisle, PA
717-249-5338

GRUMELLI FARM SERVICE
Quarryville, PA
717-786-7319

MARKLE FARM EQUIPMENT
State College, PA
814-237-3141

SANFORD FARM EQUIPMENT
Titusville, PA
814-827-1814

KELLER BROS. TRACTOR COMPANY
Lebanon, PA
717-949-6501

NEUHAUS'S INC.
Glen Rock, PA
717-235-6831

GEORGE V. SEIPLE & SON
Easton, PA
215-759-7141

Distributed By:

J.S. Woodhouse Co., Inc.
Camp Hill, PA
413-736-5462

Central Michigan Tractor & Parts

2713 N. US 27, St. Johns, MI 48879



Call The Professionals
Toll Free:
1-800-248-9263
Michigan Res.:
1-800-292-9233

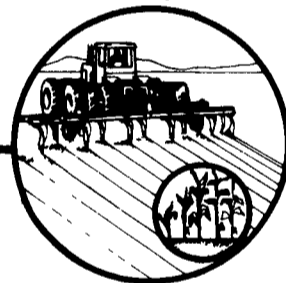
For a savings of 50% off dealers list on good used tractor & combine parts. Now Accepting VISA & Mastercard

Wayne PET FOODS

WINDSOR FEED SUPPLY CO.

Pet & Livestock - Feeds & Needs
Rte. 61 HAMBURG, PA
215-562-3444

Proof That's the Purina promise.



PLANTING IS JUST AROUND THE CORNER... MAKE IT EASIER WITH A GVM PRODUCT

HANDLE YOUR CHEMICALS WITH EASE....
USE OUR SPECIALLY DESIGNED
175 GALLON ELECTRIC FARM PACK



Includes pump, hose and all fittings... ready to go to the fields.

List Price \$ 1100.00

Special Price \$ 836.00

OTHER FARM PACK SYSTEMS

- GVM Gas Farm Pack with a 3 HP ASM Pump
- Handpump combinations with tank capacities of 65, 130 or 210 gallons.

GVM MAC MILES PER HOUR ACRE COUNTER

The GVM MILES PER HOUR ACRE COUNTER is the answer to equipment operator's problems with miles per hour and acreage totals. MAC comes with a corrosion resistant console box with large liquid crystal display numbers and all necessary cables and instruction sheets needed to complete installation.

List Price \$ 495.00 Special Price \$ 376.20

Offer Good: 3/9/85 to 3/30/85

DISTRIBUTORS OF

- Blend Plants and Conveyors
- Sprayer Parts and Accessories
- Polyethylene Tanks
- Liquid Metering Systems
- Dry Spreaders and Tenders
- Hi Boy Sprayers
- John Blue Equipment



INCORPORATED
Located 8 miles north of Gettysburg
P O Box 358
Biglerville PA
17307
(717) 677-6197

MANUFACTURERS OF

- Double Duty lime and fertilizer spreaders
- Pull type Sprayers
- Foam Markers
- Nozzle Alerts
- Total Gallon Meters
- Air Shut off Valves
- Turbo Floaters