

Cattlemen's Ass'n plans Spring Fling, March 15-17

BOILING SPRINGS — An intensive beef cattle conference, emphasizing contemporary issues facing both cattle feeders and purebred commercial cow-calf operators is set for Saturday, March 16, at the Allenberry Resort, Boiling Springs, Cumberland County.

Morning sessions deal with losses in weaned, shipped and newly arrived feeder cattle. According to T.R. Drake, Extension Veterinarian at Penn State University, "There has been a lot of data accumulated in recent years on how losses in weaned and transported cattle can be decreased. Death losses are an important part of the problem, but reduction in subsequent performance — reduced feed efficiency, reduced weight gain and cattle which require health treatment after arriving at a feedlot, all markedly decrease feedlot profit potential."

Speaker Dr. Clair Engle, Extension Animal Scientist, summarized, "One of the ways of reducing these losses is by weaning the cattle at least three weeks before shipment, and by vaccinating for diseases that cause losses, such as IBR and various shipping fever complexes." A panel composed of a cow-calf operator, auction manager and cattle feeder is scheduled to discuss their programs with regard to reducing these losses.

The morning session is also devoted to reasons for decreased consumer consumption of meat and dairy products, and new nutritional information of animal products to the human diet, discussed by Lowell L. Wilson, Professor of Dairy and Animal Science, and W.R. Henning, Extension Meat Scientist.

Following a special Cattlemen's luncheon, two sessions are being held simultaneously: one for cattle feeders and buyers; and one for purebred or commercial cow-calf operators. Topics include state and national beef promotion/education efforts, changes in the USDA grading system, an update on growth promotants, feed additives and computerizing the feedlot business with special attention given to least-cost ration formulation, and feeding/marketing programs for the small scale cattle feeder.

Of interest to the purebred or commercial cowman are the use of fescue and warm season perennials, creep grazing and pasture rotation, field results with brassicas, mineral supplementations for a spring-calving cow herd, chemical castration and performance records to select young herd sires.

The Saturday beef conference and luncheon costs \$12 per person or \$22 per two persons from the same farm. Exhibits by commercial companies and beef

promotion/educational materials will be on display and distributed.

The Pennsylvania Cattlemen's Conference and Beef Spring Fling is an inclusive weekend of events, March 15-17 at the Allenberry Resort. The event includes two nights lodging, Friday night dancing to the Rohrbach Orchestra, two Cattlemen's breakfasts, the intensive beef conference, Cattlemen's lunch, exhibits, Cattlemen's banquet with nationally known humorist Jerry Palen of Laramie, Wyoming, Saturday evening dancing, plus more.

The Pennsylvania Cattlemen's Banquet, featuring shrimp bisque, Caesar salad, sirloin strip steak, baked stuffed potato, broiled tomatoes, and apple brown Betty with vanilla ice cream will begin at 7 p.m., following a social hour. A strolling musician will entertain from 6 p.m. to 9 p.m. Speaker Jerry Palen, the crowning of the 1985 Pennsylvania Cattlemen's Queen, and presentation of the Cattlemen of the Year Award are all set for the evening. Music for dancing will follow the banquet.

Cattlemen and interested individuals may register for a

"package deal" or "ala carte" events. For a complete brochure write to Pennsylvania Cattlemen's Association, 862 Webster Drive, State College, PA 16801, or Department of Dairy and Animal Science, 324 W. L. Henning Building, University Park, PA 16802, or call 814-863-3667.

The March 15-17 conference and weekend is sponsored by the Pennsylvania Cattlemen's Association and the Pennsylvania Beef Council in cooperation with The Pennsylvania State University and the Pennsylvania Meat Marketing Program.

Sheep Research Digest available this month

DENVER, Colo. — The second issue of the Sheep Industry Development Program Research Digest will be available in early March at a reduced cost.

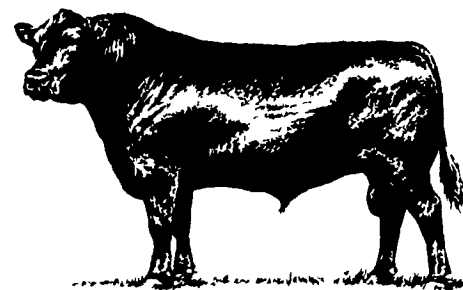
The new publication serves as a source of practical research findings which can be readily used by scientists, educators, extension agents and sheep producers alike. The Digest presents current research information on all phases of sheep production. The Digest not only serves as a valuable tool to the industry, it provides a forum for researchers to publish their work.

The SID Research Digest is published three times a year. Two issues contain articles on applied research results, and the third

issue will provide a listing and summaries of sheep and wool

research in progress. All articles are critically reviewed by a panel of researchers prior to publication.

The yearly subscription price for the Digest has been reduced to \$22.50. For information, write SID Research Digest—200 Clayton St., Denver, Colo. 80206. Telephone: (303) 399-8130.



YORK CALCIUM CHIPS

The Economical Replacement For Oyster Shells

AT LESS THAN 1/2 THE COST OF SHELLS!

Less Crax

Variable Sized
Timed Release
Soft Gray Chip
Very Soluble
Natural
From deep quarried Calcium

Heat Treated so as to make sure no contamination from surface water - or other animals
No heavy metal
Lab tested

THE BEST CHOICE TO MAKE FOR YOUR POULTRYMEN

YORK CALCIUM CHIPS
Ca..... 39%
Mg..... Less than 1%



OYSTER SHELLS
Ca..... 39%
Mg..... .7%

AVAILABLE IN BAG OR BULK



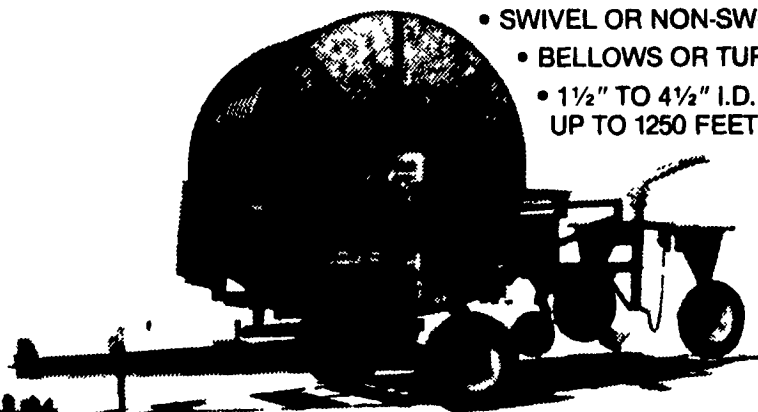
YORK STONE & SUPPLY CO.

Roosevelt Ave. Ext., York, PA 17405
717-843-0981

WATER-REEL® Traveling Irrigators

When Your Bottom Line Is Your Top Priority.

- LOW COST — EFFICIENT — RELIABLE
- COMPLETE RANGE OF MODELS
- SWIVEL OR NON-SWIVEL UNITS
- BELLOWS OR TURBINE DRIVE
- 1 1/2" TO 4 1/2" I.D. TUBE SIZE UP TO 1250 FEET LONG



ENGINEERED & DEVELOPED BY
AG-RAIN®

AG-RAIN, INC.
600 S. Schrader
Havana, IL 62644 U.S.A.
Phone 309/543-4425
TELEX: 250134