

# THE OLD FARMER'S ALMANAC

FEB. 25-MARCH 3, 1985

Time to reflect on what we neglect.

Don't forget to fill the bird feeders. Los Angeles Calif. recorded 91.6°F Feb. 25, 1921. Average length of days for the week 11 hours, 11 minutes. First quarter of the moon Feb. 27 (Wed). Hiram R. Revels became first black elected to U.S. Senate Feb. 25, 1870. John Steinbeck born in Salinas Calif. Feb. 27, 1902. As we grow old beauty steals inward.



**Ask the Old Farmer** I bought a pair of elk hide moccasins but I can't wear them because they smell terrible. What would you suggest? M.W. New London Conn.

**Try rubbing baking soda on the insides of the shoes or scrub the insides with a solution of half rubbing alcohol and half water. This may change the color of the leather, so try the mixture on a small area first.**  
**Home Hints** Keep terrariums out of direct sunlight.

## OLD FARMER'S WEATHER FORECAST

**New England:** Through midweek cold with flurries, end of week cold, snow north. Greater New York-New Jersey Very cold with flurries at week's beginning, midweek cold, end of week sunny and cold, possible sprinkles.  
**Middle Atlantic Coastal:** Beginning of week rain and snow, turning cold, midweek partly cloudy, continuing cold, end of week cloudy and cold, few sprinkles.

(All Rights Reserved, Yankee Publishing, Incorporated, Dublin, NH 03444)

## Keister's Livestock

Middleburg, Pa.

Tuesday, February 19

Report supplied by PDA

**CATTLE** 289. Compared with last Tuesday's market, slaughter cows steady 50 cents higher. Choice 2-4 slaughter steers 970-1370 lbs. 63.35-66.25, Few Holsteins 56.35-60.35, Good 56.00-62.50, Holstein 52.00-55.25, Few Standard 47.75-53.50, Few Utility 43.25-47.00. Choice slaughter heifers 57.75-63.75, Few Good 53.00-57.00. Breaking Utility & Commercial slaughter cows 42.50-46.50, couple 48.50, Cutter & Boning Utility 38.50-43.50, Canner & Low Cutter 35.50-38.50, Shells down to 32.00. Few Good & Choice slaughter bullocks 55.00-58.00. Few Yield Grade No. 1 1150-1680 lbs. slaughter bulls, 45.00-53.00. **FEEDER CATTLE:** Steers Few Medium Frame No. 1 400-775 lbs. and Bulls 45.00-62.00.

**CALVES** 186. Choice Vealers 70.00-85.00, Good 65.00-75.00, Standard & Good 70-110 lbs. 52.00-62.00, Utility 60-85 lbs. 40.00-50.00. **HOGS** 741. Barrows & gilts 1.50-1.75 lower. US No. 1-2 210-235 lbs.

barrows & gilts 51.25-52.60, few 53.25, No. 1-3 190-250 lbs. 50.25-51.25, No. 2-3 200-270 lbs. 47.25-50.25. **FARM CALVES:** Holstein Bulls 90-125 lbs. 55.00-89, mostly 70.00-85.

**SOWS:** US No. 1-3 290-650 lbs. sows 45.50-48.75, few to 50.50, No. 2-3 290-510 lbs. 35.00-45.00. **BOARS.** 30.00-39.00.

**FEEDER PIGS** 368. US No. 1-3 20-35 lbs. feeder pigs 29.00-36.00 per head, No. 1-3 60-80 lbs. 44.50-50.00, No. 1-3 35-50 lbs. 31.00-40.00.

**SHEEP** 26. Few Choice New Crop Lambs 25-50 lbs. 95.00-110.00. Slaughter Ewes 28.00-33.00. **GOATS** 9. Few Large 35.00-79.00 per head.

## Peoria Cattle

Thursday, February 21

Report supplied by USDA

Trading slow this week on rather light receipts as an uncertain dressed beef market and most cattle carrying mud caused slaughter steer prices to close mostly 1.00 lower with heifer prices declining .50 to 1.00. Bulk of receipts Monday with very few cattle arriving Wednesday. Cows

mostly 3.00 to 4.00 lower. Bulls generally steady, supply mainly Good and Low Choice Slaughter Steers with 12% Cows. Receipts this week about 1500 as compared to 969 a week ago and 1271 a year ago.

**SLAUGHTER STEERS:** Choice 2-4 1050-1200 lbs. 64.00-64.50, few Wednesday 63.00-63.50; 900-1050 lbs. 62.50-64.00. Mixed Good and Choice 2-3 900-1100 lbs. 60.00-63.00. Good 2-3 900-1050 lbs. 56.00-60.00.

**SLAUGHTER HEIFERS:** Choice 2-4 950-1100 lbs. 63.00-64.00; 800-950 lbs. 61.00-63.00. Mixed Good and Choice 2-3 800-1000 lbs. 58.00-62.00. Good 2-3 800-950 lbs. 55.00-58.00.

**COWS:** Breaking Utility and Commercial 2-3 38.00-42.00. Cutter and Boning Utility 1-2 33.00-39.00. Canner and Low Cutter 30.00-34.00.

**BULLS:** Few YG 1-2 1300-1800 lbs. 43.00-51.00.

## Valley Livestock

Athens, Pa.

Monday, February 18

Report supplied by auction

Holstein Hfr. Calves to 75.00. Veal Calves to 90.00. Vealer Bull Calves 75.00-91.00. Slaughter Calves 55.00-63.00. Grassers & Feeders 35.00-50.00. Lambs - Small to 120.00; 59.00-67.00.

Sheep 13.50-39.00. Hogs, 200 to 250 42.00-49.50. Sows 38.50-48.00. Boars 33.00-38.00. Pigs each 13.00-34.00.

Heifers 40.75-45.50. Steers, medium 42.00-44.25. Steers, feeder none. Bulls 33.00-44.50. Cows, utility 38.00-44.25. Cows, fat 38.00-43.00. Cows, medium 30.50-38.00. Cows, poor or small 20.00-30.25. Cattle Market active. Calf Market stronger. Horses none. Ponies to 42.00. Goats 10.00-51.00. Hay 97.50 per ton. Remarks: Strong on good kind.

## East Coast Carlot

Wednesday, February 20

Report supplied by USDA

Compared to Tuesday's close: Special Fed Veal steady to weak in limited comparison. Good and Choice Boning Veal steady to 2.00 lower; inshipped untested. Compared to last week Beef Trimmings steady to 1.00 lower.

**Veal Carcass**

Choice & Prime (Special Fed)

Hide On 500 Head

220-280 lbs. 154.00-158.00, generally steady-weak, bulk 155.00.

**Good and Choice**

Boning Type

Hide On 700 Head

**NORTHEASTERN SUP-PLIERS:** 65-75 lbs. 90.00-92.00,

steady-2.00 lower; 55-64 lbs. 88.00-90.00; 45-54 lbs. 86.00-88.00, 84.00-86.00; 34 lbs. down 82.00-84.00.

INSHIPPED: No test.

**Beef Trimmings**

3 Loads

50% Chem Lean, Fresh 55.00, steady-1.00 lower than last week.

## Jersey Shore, Pa.

Thursday, February 14

Report Supplied by Auction

Return to Farm Calf 63.00-94.00.

Good Veal 65.00-82.00.

Common Veal 40.00-64.00.

Choice Steers 64.00-67.00.

Good Steers 58.00-63.00.

Common Steers 46.00-57.00.

Commercial Cows 47.00-49.00.

Canners-Cutters 38.00-46.00.

Shells 29.00-37.00.

Choice Heifers 61.00-64.00.

Good Heifers 50.00-60.00.

Common Heifers 44.00-49.00.

Good Feeders 50.00-55.00.

Common Feeders 40.00-49.00.

Bulls 46.00-54.00.

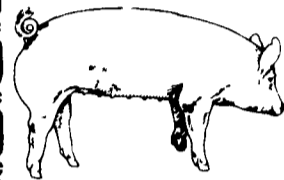
Good Hogs 52.00-53.50.

Heavies 53.00-53.00.

Sows 43.00-46.50.

Eggs 70.00-88.00.

Hay 40.00-78.00.



**EMERY'S BUYING STATION**

**OPEN TO RECEIVE YOUR MARKET HOGS**

**AT THE GREEN DRAGON MARKET RD 4, EPHRATA, PA 17522 1 MILE NORTH OF EPHRATA ON NORTH STATE STREET.**

**HOURS: MONDAY, TUESDAY, and WEDNESDAY 6:00 A.M. to 11:30 A.M. 215-458-5677 Residence 717-733-9648 Office**

**YOU ARE PAID FOR YOUR HOGS IMMEDIATELY**

Ken & Lois Emery, Proprietors

## Green Dragon Livestock Sales



Location: Ephrata RD 4. 1 mile N. on North State St., Ephrata.

**COWS COWS COWS SALE EVERY FRIDAY**

Lots of good Northern Feeder & Stockers. Slaughter Cows - Bull Steer, Veal-lamb

11:00 A.M.-Beef Sale 200-300 each week. 1:00 P.M.-Dairy Sale. 7:00 P.M.-Small Animal Sale.

For Special Sales and Herd Dispersals on farm or at our barn or other market information call: Office 717-733-2444, Home 717-838-4318.

**WALTER H. RISSER, Proprietor**

All out of state and new buyers must have cash or certified check or current letter of credit from bank.



## ATTENTION FARMERS

**EVERY MONDAY HATFIELD PACKING CO. and MOYER PACKING CO.**

Will Receive Your Hogs and Cattle at the **DANVILLE LIVESTOCK MARKET RD 4, Danville, PA**

- We will receive your hogs from 8 AM to 12 Noon every Monday. Your hogs will be weighed and paid for immediately.
- We will also accept your sows & boars.
- Your cattle will be received from 12:30 to 5 P.M. We will either pay you for your cattle immediately or you may sell them dressed weight.
- There will not be a commission or yardage fee deducted from your check.
- You may call our office Monday morning and we will be able to tell you the base price for hogs for the day.

**MELVIN M. LEHMAN - Owner Danville Buying Station Phone: 717-275-2880**



**Be Wise... Check our prices before you buy!!**

We will deliver in the Delmarva area

# SPRAY MATERIALS

- |                   |             |             |
|-------------------|-------------|-------------|
| * ATRAZINE        | * BLADIX    | * PRINCEP   |
| * DUAL            | * BANVEL    | * EXTRAZINE |
| * LASSO           | * LOROX     | * COUNTER   |
| * SUTAZINE        | * TOXAPHENE | * DIFONATE  |
| * ROUND UP        | * PARAQUAT  | * FURADAN   |
| * LASSO- ATRAZINE |             | * LORSBAN   |

**SAVE ON BULK HERBICIDES**  
• BICEP • LASSO-ATRAZINE • PROWL

**MELVIN R. WEAVER**

2213 Leabrook Road, Lancaster, PA 17601  
Ph: 717-569-6576 or 898-8354

## FRIDAY, MARCH 15 ON THE FARM MONTHLY BRED GILT SALE

Sale to Start Promptly at 1:00 P.M. Every 4 Weeks

Located 18 miles south of Lancaster, Pa., 6 miles south of Quarryville, take Rt 272 to Little Britain, turn north, follow Little Britain Road to Jackson Road, right 2nd farm, OR take Rt 222, out of Quarryville to Cedar Hill Road to Little Britain Road to Jackson Road, left Watch for sale arrows

**50 to 60 Head**

Now selling our new hybrid gilts representing mostly York & Hampshire & Landrace cross. Bred for easier & Less trouble over farrowing and better weight gains.

**Validated Brucellosis Free Herd #169 Qualified Pseudorabies Free Herd #55**

**Hand mated with Breeding Dates**

Local Trucker Available  
No Hogs Sold On Commission

**CHRIST A. BEILER**  
R.D. 2, Quarryville, Pa  
**JOHN B. STOLTZFUS**  
R.D. 1, Kirkwood, Pa

Abe Diffenbach, Auctioneer AU225L  
NEXT SALE DATE APRIL 12