

Weekly Summary

Harrisburg, Pa.

Friday, Feb. 22

11 Livestock Mkts.

Report supplied by PDA

CATTLE: 4611. Compared with 4944 head last week, and 5324 head a year ago. Compared with last week's market: Slaughter steers 1.00-1.50 lower; Sl. heifers and Bulls 1.00-3.00 lower; Sl. Cows 1.00-2.00 lower. Sl. steers: few High Choice & Prime 67.00-72.00, Choice 62.50-67.00, Good 55.00-62.50, Standard 48.00-56.00. Sl. heifers: Choice 56.50-63.50, Good 51.00-58.00, Standard 44.00-51.00. Sl. cows: Breaking Utility & Commercial 40.00-46.50, Cutter & Boning Utility 37.50-43.50, Canner & low Cutter 31.00-39.50, shells down to 25.50. Sl. bullocks: few Choice 56.00-61.00, few Good 52.00-57.00. Sl. bulls: 1200-2200 lbs. 45.00-53.50; Yield Grade 2 few 900-1400 lbs. 40.25-49.00.

FEEDER CATTLE: Steers,

Large & Medium Frame 1 350-750 lbs. 52.00-64.50; Heifers, Medium Frame 1 300-650 lbs. 44.00-54.00; Bulls, Large & Medium Frame 1 350-800 lbs. 48.00-62.00.

CALVES: 2799. Compared with 3864 head last week, and 3742 head a year ago. Uneven, Good & Choice Grades steady to 5.00 lower, Standard & low Good steady to 3.00 higher. Choice 80.00-92.00; Good 61.00-85.00, 90-110 lbs. 50.00-62.00, 70-90 lbs. 41.00-52.00; Utility 50-90 lbs. 20.00-45.00.

FARM CALVES: Hol. bulls 90-130 lbs. 60.00-91.00; Heifers few 90-125 lbs. 55.00-77.00.

HOGS: 4873. Compared with 6382 head last week, and 3890 head a year ago. 2.50-3.50 lower. US 1-2 210-255 lbs. 49.00-52.00, 1-3 200-260 lbs. 47.50-49.75, 2-3 230-280 lbs. 46.00-48.50; Sows 1-3 300-700 lbs. 45.00-49.50, 2-3 400-700 lbs. 38.00-45.00. Boars 30.00-38.00.

FEEDER PIGS: 1059. Compared with 955 head last week, and 1075 head a year ago. Uneven. 25-35

lbs. 27.50-36.00, 35-60 lbs. 30.00-42.00, few 60-90 lbs. 44.50-53.00.

3 GRADED FEEDER PIG SALES: 1400. Compared with 1993 head last week, and 1717 head a year ago. Mostly steady to 9.00 higher. 30-40 lbs. 85.00-111.00, 40-50 lbs. 82.00-112.00, 50-60 lbs. 83.00-103.00, 60-70 lbs. 60.00-91.00.

SHEEP: 549. Compared with 600 head last week, and 384 head a year ago. Steady to strong. High Choice & Prime 80-110 lbs. 75.00-80.00; Choice 75-105 lbs. 60.00-76.00; few Choice new crop lambs 25-60 lbs. 95.00-145.00; few Good 70-90 lbs. 64.00-70.00. Sl. ewes 20.00-35.00.

COWS: Breaking Utility & Commercial 40.50-45.85, Cutter & Boning Utility 38.75-42.85, Canner & low Cutter 34.85-38.85.

BULLS: Yield Grade 1 1000-2085 lbs. 46.60-53.85.

CALVES: 345. One Choice at 87.00, few Good 62.00-70.00, few 110-120 lbs. 60.00-62.00, 70-105 lbs. 49.00-59.00.

FARM CALVES: Hol. Bulls 90-125 lbs. 60.00-90.00; Heifers 90-120 lbs. 55.00-65.00.

HOGS: 25. Few lots 1-3 225-265 lbs. 45.75-49.50. Sows 1. 400 lbs. at 42.00.

FEEDER PIGS: No established market.

SHEEP: 14. One lot Choice 85 lb. new crop lambs at 70.50.

Finding the right plant population

NEWARK, Del. - An increasing amount of pickle acreage on the Delmarva peninsula is now being harvested using a once-over, destructive mechanical harvest operation. This practice uses gynococious hybrids (which produce predominantly female flowers) planted at high populations to produce higher yields maturing at a single time. The big question is, what plant population produces the best yield?

Last summer University of Delaware extension vegetable specialist Ed Kee established demonstration plots at the university's Georgetown substation to evaluate pickle performance at three population levels. Three varieties were planted - Regal, Calypso and Flurry - at populations of 52,000, 65,000 and 88,000 plants per acre. Each plot started with 100,000 plants and was hand-thinned to the desired population.

Yields for each variety were highest at 65,000 plants per acre. At that level, yields averaged 329 bushels an acre versus 254 bushels at a plant population of 88,000, and 212 bushels at 52,000.

According to Kee, these responses appeared to result from the relationship between number of plants per acre, and fruit per plant. At the 52,000 and 65,000 populations, each plant produced an average of two fruits, as compared to only 1.4 fruits per plant at the highest population. "Yields increased at the 65,000 over the 52,000 level simply because there were more plants," the specialist says. "But at the 88,000 level, plants had too much competition and each produced less fruit, so yields were down."

As for varietal performance, Regal out-yielded both Calypso and Flurry at each population and when averaged across all population levels. At 65,000 plants per acre, Regal was the highest

yielding treatment in the experiment.

During the 1984 growing season Kee conducted two other pickle studies at the Georgetown substation. One checked the effectiveness of the growth regulator, "Burst" - a cytokinen material which theoretically can increase yields. However, he saw no response in either handpicked, multiple harvest or machine harvest trials.

In the second study, the specialist evaluated 40 pickle varieties in a spring planting, and a smaller, similar trial harvested in September. "Although many of the varieties we looked at are experimental and not yet commercially available," he reports, "some promising lines are coming along." Regal was one of the leaders in both trials, with Calypso another good producer among named varieties.

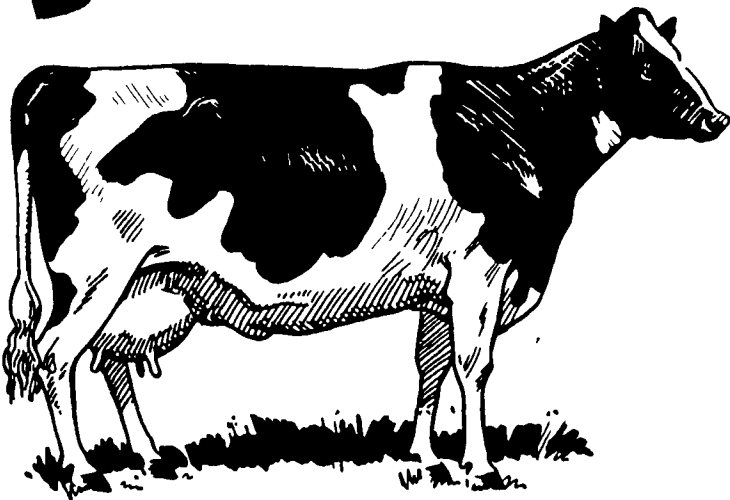
High Quality Protein

Amaranth seeds, used in some developing countries to make flour or powder for drinks, are safe and nutritious sources of protein. Botanists at the University of Maryland have determined that one vegetable form of the amaranth plant contains as much as 13% protein and large amounts of amino acid lysine - a critical component not usually found in plant proteins. They also found virtually no cholesterol, and safe levels of saturated and unsaturated fatty acids on the six amaranth varieties they tested.

Pregnancy Test for Mares

A new test can detect pregnancy in mares more accurately than the current industry standard, according to animal scientists at the University of Maryland. The test, called a radioreceptor assay, can detect pregnancy as few as 45 days after breeding, and researchers report their studies show a 100% accuracy rate.

SYMO-O-O-O



MORE DAIRY COWS ASK FOR IT. SYMO-LAC.

Symo-Lac is a vitamin-mineral fermentation product for supplementing the diets of dairy cows. With high levels of digestive bacteria, enzymes, essential vitamins, minerals and electrolytes, Symo-Lac will help herds meet optimum performance requirements.

Symo-Lac is formulated to be used from pre-freshening to breeding and whenever health or performance problems occur. It will improve appetite, feed efficiency and feed utilization. It can be used to increase milk production and butterfat test. Plus, it will effectively combat mastitis condition.

With Symo-Lac, it's easier to have a contented cow. Contains no drugs or antibiotics.



Available in 10 lb. or 25 lb. pail or 40 lb. bag

Regional Field Consultant

LESLIE YODER

RD 2, Parksburg, PA 19365
Ph. 215-857-3744

Area Field Consultants

DAN MARTIN

RD 1, Box 395-8
Black Creek Dev.
East Earl, PA 17519
Ph. 215-445-7161

JOHN PEACHY

RD 2 Box 73
Mifflinburg, PA 17844
Ph. 717-966-0465

HAROLD EBY

Rt 3 Box 159
Clearville, PA 15535
Ph. 814-767-9651

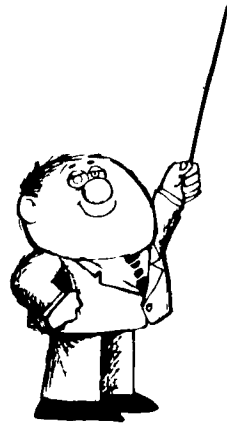
SYLVAN SMOKER

RD 1, Box 12, Zook Rd.
Atglen, PA 19310
Ph. 717-593-2831



Symo-Life, Inc.

Star Route • Millersburg, Ohio 44654
Telephone: 216-893-2732



A LESSON WELL LEARNED...

LANCASTER FARMING'S CLASSIFIED ADS GET RESULTS!

Phone:

717-394-3047

or

717-626-1164

\$50 U.S.A. GRAIN FARMERS \$50.00 DISCOUNT WITH THIS AD (COUPON) \$50

LF

YOU CAN SAVE \$150 to \$5000



WHY BUY BELARUS SELL-A-BRATION?

- Real "fuel misers"
- Long engine life
- Rugged workpower
- Exclusive 4-WD on 57, 70 and 85 hp models
- Life-time oil filter
- Low maintenance cost
- Easy to work on
- Excellent parts/service support-2nd to none

Stop in for a test drive. When you get the feel of Belarus power and the Birthday Sell-a-bration price, you'll sell yourself

SELL-A-BRATION PRICES YOUR NET CASH PRICES

	Price Before	Rebate	CASH PRICE
Model 250	29	\$6,999	\$5,199
Model 420**	57	\$14,061	\$11,238
Model 500	70	\$13,200	\$8,000
Model 611	80	\$15,727	\$12,385
Model 800	85	\$16,635	\$12,995
Model 820**	85	\$19,596	\$15,200
Model 1500C** 165		\$42,965	\$36,965
Engine	29...	Ideal for Skid Loader	\$2,395

ROVENDALE SUPPLY



Exit 31, Rt. I-80 to 180 (Old Rt. 147) to Watsonstown Exit (You Are There!) M to F: 8-8 S: 9-5

Ph. (717) 538-5521 or 742-7521 TOLL FREE 1 (800) 232-DALE

* Belarus tractors were introduced to the U.S. farm market in the Fall of 1974. Some owners are reporting upwards of 10,000 hours on their Belarus diesel engine without an overhaul

BUTLER, JAMESWAY, BERG, FARMWAY, FIBERDOME, BIG A PARTS