

Livestock market and auction news

Westminster Livestock Auction

Westminster, Pa.

Tuesday, February 19

Report supplied by auction

SLAUGHTER COWS: 110 head \$1.00-2.00 lower. High Yield to 46.75; Utility 40.00-44.50; Cannors 37.00-41.00; Shelly 36.00 down. **Bulls-** Steady prices. Good 50.00-52.00; Medium 45.00-50.00. **Fed Steers-** Few Choice to 63.75; Good to Low Choice 53.00-60.00; Medium to Good 48.00-53.00. **Fed Heifers-** Few Choice to 60.00; Good 50.00-56.00. **Veal Calves-** 110 head. Good demand. Good 82.50; Standard 55.00-65.00; Stocky/Thin 35.00-45.00; Killers 80-110 lb. 50.00-57.00; Weak/Rough 35.00 down. **Farm Calves-** Holstein Bulls 100-125 lb. 75.00-89.00; 90-100 lb. 56.00-70.00; Beef Type 75-110 lb. 55.00-72.00. **Butcher Hogs-** \$3.00 under last week. US #1&3 215-240 lbs. to 48.10; 240-260 lb. 51.50-53.00; 195-210 lb. 44.50-45.50.

STOCK CATTLE: Large demand, good demand. **Steers-** 300-500 lb. 57.00-62.00; 500-950 lb. 51.00-54.00; Holstein 500-900 lb. 39.00-42.00. **Heifers-** 300-700 lb. Good-Choice 49.00-53.00; Medium-Good 43.00-49.00. **Bulls-** 300-600 lb. Good 51.00-60.00; Medium 43.00-50.00. **Lambs-** Good New Crop. 100-115 lb. 65.00-66.50; Good Woolled 78-80 lb. 56.00-60.00. **Sheep-** 21.00-25.00. **Goats by the Head-** Mature 26.00-49.00; 2 head at 66.00; Kids few to 26.00. **Pigs & Shoats-** 120 head. Steady prices. 20-25 lb. to 25.00; 30-45 lb. 24.00-36.00; 65-100 lb. 37.00-42.50; Bred Sows 165.00 each. By the Lb.- 150-180 lb. 48.00-48.50; 95-130 lb. 35.00-39.00. **Sows-** Over 500 lb. 48.50-49.50; 300-500 lb. 45.00-47.00. **Boars-** 500-600 lb. to 35.00.

HAY

36 Loads

Prices lower. **Alfalfa Good** 80.00-106.00 per ton; **Fair to Good** 52.00-66.00 per ton; **Timothy Good** 70.00-86.00 per ton; **Fair to Good** 45.00-66.00 per ton; 1.50 bale; **Clover** 49.00 per ton; **Clover & Timothy** 54.00-60.00 per ton; **Alfalfa & Timothy** 62.50-75.00 per ton; **Mixed Wood** 61.00 per cord.

Runs were larger in all classes this week due to the higher weather.

Buyers are getting interested in Feeder Cattle.

Special Heifer sales will be starting in the middle of March.

Four States Livestock

Hagerstown, Md.

Wednesday, February 13

Report supplied by Auction

SLAUGHTER: Fed Steers-Steady prices. **Low Choice** 61.00-62.50; **Good** 56.00-60.00; **Medium** 55.00 down. **Heifers-** Choice 57.00-60.00; **Good** 50.00-56.00; **Medium** 49.00 down. **Cows-** Good run \$1.00 lower. **High Yield** 44.00-48.00; **Average** 39.00-43.00; **Big Middle** 35.00-38.00; **Fatty Herf.** 35.00-40.00; **Shelly** 37.00 down. **Fat Bulls-** 1.00 higher. **Good** 48.00-49.50; **Medium** 45.00-47.00. **Veal Calves-** Light Calves \$3.00 higher. **Heavy Calves** steady. **Good** 75.00-88.00; **Medium** 65.00-74.00; **Farm Hfrs.** 54.00-59.00; **Farm Bulls** 65.00-75.00; **Light Calves** 47.00-56.00; **Weak Calves** 46.00 down.

STOCKERS: Steers- 300-550 lbs. Very active steady prices. **Choice** 62.00-65.50; **Good** 55.00-61.00; **Medium** 50.00-54.00; **Culls** 49.00 down. **Steers 600-850 lbs.** Choice 60.00-63.00; **Good** 55.00-59.00;

Medium 54.00 down. **Heifers (All Weights)-** Choice 50.00-53.50; **Good** 45.00-49.00; **Medium** 40.00-44.00. **Springing Heifers** to 735.00. **Pigs, Hd.-** \$2.00 to \$4.00 higher. 20-35 lbs. 23.00-37.00; 40-70 lbs. 38.00-63.50. **Shoats by Lb.** 45.50-54.50. **Slaughter Hogs-** Steady prices. 220-230 lbs. 49.35-51.50; 240-260 lbs. 49.25-50.00. **Sows-** \$1.00 higher. 460-555 lbs. 47.00-50.75; 350-450 lbs. 42.50-46.00.

4H & FFA Club Grand Champion at \$4.00 per pound. Buyer was Hatfield & was the buyer of Reserve Champion & largest amount of Club Hogs. Other buyers were Brook Meadow, Phares Horst, Pheasant Run Farm, Sam Hunter, Roy L. Hoffman & Sons & John Royer. Next State Graded Feeder Pig Sale at Westminster Livestock will be Feb. 22nd. at 1:30 p.m. Hatfield tops this week was \$52.50.

Omaha Cattle

Thursday, February 21

Report supplied by USDA

Slaughter Steer and Heifer prices trended .50-.75 lower this week, with some closing levels at the lowest point since November 1984. Most downward pressure came from an uncertain beef trade which declined on the carcass side while improving on the boxed items. Overall finish continued fair and mud an ongoing problem. **Slaughter Cows** 1.00 lower. **Bulls** steady.

Estimated 5 day receipts 8200, actuals last week 6736 and last year 7382. **Steers** comprised 40 pct. of the week's receipts, **Heifers** 42 pct., **Cows** 11 pct., **Feeders** 6 pct.

SLAUGHTER STEERS: At the close, **load Choice** and **Prime 3-4** near 1225 lbs. 64.00. **Choice 2-4** 1050-1300 lbs. 63.00-64.00; **load mudd**

Choice 2-4 1350 lbs. 62.25. **Mixed Good and Choice 2-3** 1000-1150 lbs. 62.00-63.00. **Good** 60.00-61.50.

SLAUGHTER HEIFERS: **Choice 2-4** 950-1075 lbs. 61.00-62.00, upper half of Choice grade poorly tested. **Mixed Good and Choice 2-3** 900-1050 lbs. 60.50-61.50. **Good** 58.00-60.50.

Average of LS 214 detailed quotations for 900-1100 lb. **Choice Steers** 62.60, 1100-1300 lbs. 63.35. Average cost **Steers** 63.08, average weight 1188 lbs.; as compared 62.73 and 1192 lbs. a week ago. Average cost **Heifers** 61.03, average weight 1057 lbs, as compared 61.50 and 1038 lbs. a week ago.

SLAUGHTER COWS: **Cutter and Boning Utility 1-2** 39.00-42.50, high dressing to 44.00. **Canner and low Cutter** 36.50-39.00.

SLAUGHTER BULLS: 1-2 1350-2000 lbs. 46.00-53.00, few lot dressing to 43.00.

North Jersey Livestock

Hackettstown, NJ

Wednesday, February 19

Report supplied by auction

Calves- 15.00-89.00.

Cows- 25.00-47.50.

Easy Cows- 22.00-41.00.

Heifers- 28.50-51.00.

Bulls- 35.00-50.25.

Steers- 33.50-57.25.

Hogs- 29.00-54.00.

Roasting Pigs, each- 10.00-37.00.

Boars- 30.00-35.00.

Sows- 35.00-50.00.

Sheep- 18.00-51.00.

Lambs, each- 22.00-69.00.

Lambs, per lb. 30.00-83.000.

Goats, each 19.00-81.00.

Kids, each 16.00-36.00.

Hides, each 10.00-16.00.

Greencastle Livestock

Greencastle, Pa.

Monday, February 18

CATTLE 598. **Butcher Steers-** Choice up to 66.00; **Butcher Steers-Medium-Good** 52.00-64.50; **Butcher Heifers-Choice** 62.00-65.25; **Butcher Heifers-Medium-Good** 45.00-63.00; **Butcher Cows-Utility-Good** 42.00-48.00 few to 52.00; **Butcher Cows-Cannors and Cutters** 37.00-45.00; **Butcher Cows-Shells** 37.00 and down; **Butcher Bulls-Medium-Good** 46.00-58.75; **Stock Steers-Medium-Good** up to 66.00; **Stock Heifers-Medium-Good** 56.50.

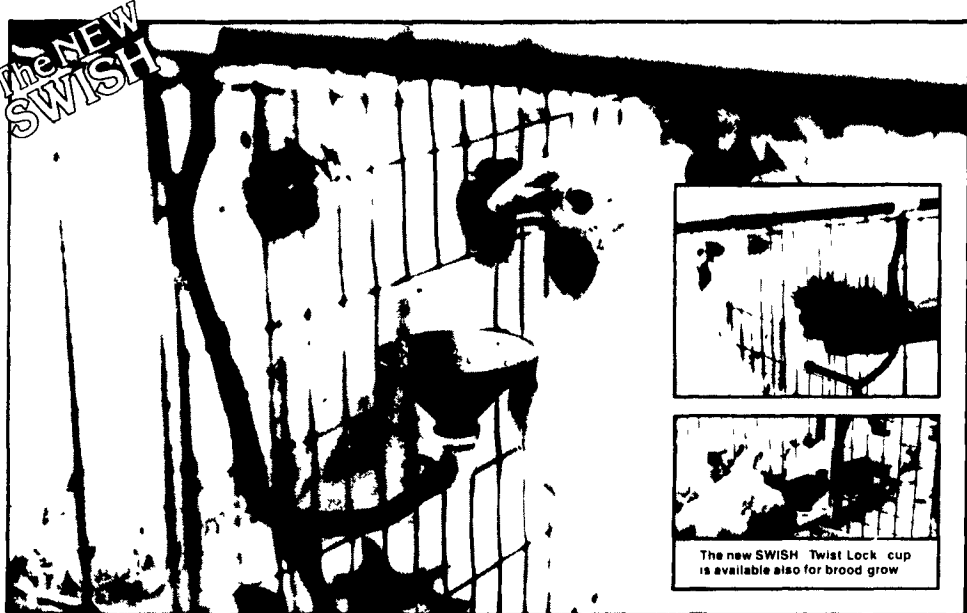
CALVES 317. **Medium-Good Calves** 160-220 lbs. 70.00-94.00; **Medium-Good Calves** 125-160 lbs. 60.00-80.00; **Medium-Good Calves** 100-120 lbs. 55.00-70.00; **Medium-Good Calves** 80-100 lbs. 50.00-60.00; **Holstein Bull Calves** up to 95.00; **Holstein Heifer Calves** 65.00; **Light and Green Calves** down to 35.00.

SHEEP and LAMBS 29. **Medium-Good Lambs** 44.00-61.00; **Butchering Ewes and Bucks** 23.00-30.00.

HOGS 101. **Good-Choice Butcher Hogs** 190-225 lbs. 50.00; **Good-Choice Butcher Hogs** 225-250 lbs. 50.50; **Good-Choice Butcher Sows** 400 lbs., up to 47.50; **Good-Choice Butcher Sows** 400 lbs., up 48.50; **Heavy Boars** 35.00; **Pigs-Per Head** 20.00-31.00.

43 Loads Hay & Straw 50.00 to 102.50 Ton.

"Twist-Lock" cups: newest innovation from the new leader



...another reason SWISH saves you more labor, more birds, and more money

The newest twist in cage watering makes cup cleaning and maintenance a real snap! It's SWISH's Twist-Lock cups for cage layers and brood-grow watering systems.

Saves labor. No more contortions with hand tools inside a cage - one simple twist of the wrist unlocks and removes the unitized cup and valve. It's that easy to maintain when necessary. But with SWISH, it's hardly ever necessary. That's because our cup is self-cleaning. Our patented valve keeps the cup clean by flushing any feed particles out so birds can consume them with the water.

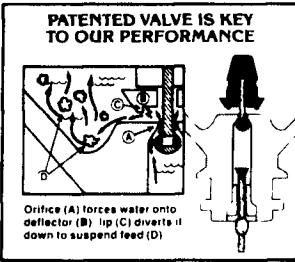
Installation is a snap too with SWISH's new cups - they simply snap into the desired location, and the hose attaches to the water line outlet. These are some

of the ways SWISH's new cup saves you labor - easy installation, low maintenance, and labor savings between flocks because our cup constantly cleans itself.

Helps save more birds. Because our cup is self-cleaning, algae and bacteria growth is not a problem as with cups that don't flush out feed particles. Clean cups mean less chance of disease and less mortality. And our big cup means good access to water for a good level of bird health.

SWISH saves you money. That's the bottom line with a system that cuts labor and keeps birds alive and productive.

Get all the facts about our new cup and other SWISH innovations. See your SWISH distributor or contact us.



Orifice (A) forces water onto deflector (B) lip (C) diverts it down to suspend feed (D)

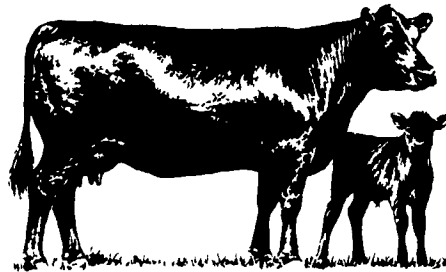
The NEW SWISH - total commitment to quality & service

SWISH
watering systems
now a division of CTB Inc

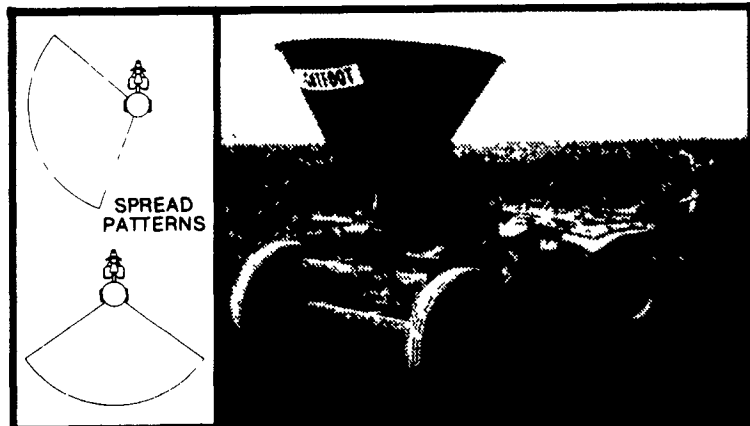
NORTHEAST AGRI SYSTEMS, INC.

P.O. Box 187
Fitchville, CT 06334
Phone: (203) 642-7529

Local Representative
DAVID NEWMAN
(717) 299-9905



LIGHTFOOT BROADCAST SEEDER & FERTILIZER SPREADER



MODEL DB1120 SPECIFICATIONS

- ★ HOPPER CAPACITY—8 Bushel or Up To 900 lbs.
- ★ GROUND DRIVEN
- ★ SPREADING WIDTH—Adjustable From 15 to 50 Feet
- ★ OVERALL HEIGHT—63" / WIDTH—58"
- ★ LENGTH—77" / WEIGHT—320 lbs.
- ★ VARIOUS MODELS AVAILABLE

Ideal for early spring and fall seeding and fertilizer spreading. Pulled by an ATV/3-wheeler, it will eliminate cutting ruts in your field that might have occurred if heavy equipment had been used...NO YIELD LOSS FROM SOIL COMPACTION.

Distributed By:

CUMMINGS & BRICKER, INC.
100 Stover Drive, Carlisle, Pa. 17013 717-249-6720

Northeast
agri
systems