



Livestock market and auction news

Virginia Auction Summary

February 7-13

Report supplied by VDA
Total of Va. Weekly Feeder Cattle Auction Receipts: 5,416.
Trend: Steady to 4.00 higher.

South & Southwest Va. Smithfield

February 7-13

Report supplied by VDA
STEERS: Medium 1 300-500 lbs. 65.00-78.00, 500-700 lbs. 58.50-68.50, 700-1000 lbs. 57.00-66.00. Large 1 300-500 lbs. 63.00-74.00, 500-700 lbs. 63.00-71.50, 700-1000 lbs. 61.00-67.00. Small 1 300-500 lbs. 55.00-68.00, 500-700 lbs. 55.50-64.00, 700-1000 lbs. 60.00-75.00.

HEIFERS: Medium 1 300-500 lbs. 55.00-66.00, 500-700 lbs. 48.00-59.50, 700-900 lbs. 47.00-57.50. Large 1 300-500 lbs. 52.50-62.50, 500-700 lbs. 50.00-60.00, 700-900 lbs. 45.00-56.00. Small 1 300-500 lbs. 50.50-60.00, 500-700 lbs. 47.00-55.00.

Northern Va. Auction Summary
February 7-13

Report supplied by VDA
STEERS: Medium 1 300-500 lbs. 58.00-67.00, 500-700 lbs. 58.00-68.00, 700-1000 lbs. 54.50-64.00. Large 1 300-500 lbs. 62.00-71.00, 500-700 lbs. 61.50-68.50. Small 1 300-500 lbs. 55.00-66.00; 500-700 lbs. 51.00-64.00, 700-1000 lbs. 54.50-61.25.

HEIFERS: Medium 1 300-500 lbs. 50.00-58.50, 500-700 lbs. 48.50-58.00, 700-900 lbs. 51.75-57.85. Large 1 300-500 lbs. 50.00-58.00, 500-700 lbs. 52.00-55.25, 700-900 lbs. 53.00-58.50. Small 1 300-500 lbs. 44.00-54.00, 500-700 lbs. 45.00-52.00, 700-900 lbs. 44.50.

Shenandoah Valley Livestock

Harrisonburg, Va.

Saturday, February 9

Report supplied by auction
FEEDER CATTLE: Trend- Mostly steady. Steers- M&L-1 300-

500 lbs. 61.00-65.00, 1 lot of 6 at 74.00, 500-700 lbs. 58.00-104.00, 1 lot of 4 at 71.00, 700-1000 lbs. 54.50-63.00, Holstein 300-1000 42.00-49.75. S-1&M&L-2 300-500 lbs. 55.00-67.00. Feeder Bulls: M&L-1 300-500 lbs. 64.00-66.00, 500-700 lbs. Few 53.50-58.00. Heifers: M&L-1 300-500 lbs. 51.50-58.00, 500-700 lbs. 49.00-58.00, 700-800 lbs. Few 58.50. S-1&M&L-2 500-700 lbs. Few 47.00-53.00.

SLAUGHTER CATTLE: Steers-Choice 2-4 61.85; Good 2-3 58.50-60.25.

SLAUGHTER COWS: 1.00-3.00 higher. Utility & Commercial 2-4 36.25-43.25, Few 45.00-49.00. Canner & Cutters 1-3 29.75-36.50.

SLAUGHTER BULLS 1&2 38.50-48.00.

LAMBS: High Choice & Prime 66.50; Choice 63.50; Feeder Lambs Choice 64.75-65.50; Slaughter Ewes 20.00-22.00 on heavy ewes; 5.00-10.00 95#-100#; Head Ewes 35.00-70.00.

HOGS: US 1-3 200-240 lbs. 49.35; Sows-13 Few 43.00-49.00; Boars 29.00.

91.00; Medium 70.00-79.00; Farm Hfrs. 52.00-55.00; Farm Bulls 78.00-90.00; Light Calves 43.00-54.00; Weak Calves 42.00 down. Sows- 500-725 lbs. 46.00-48.50; 300-450 lbs. 42.00-45.00.

STOCKER: Steers- 300-550 lbs. Very active steady prices. Choice 62.00-66.00; Good 56.00-61.00; Medium 51.00-55.00; Culls 50.00 down; Dairy Type 42.00-50.00. Steers 600-850 lbs. Choice 60.00-64.00; Good 55.00-59.00; Medium 54.00 down. Heifers (All Weights)- Good 45.00-48.50; Medium 41.00-44.00. Bulls- Good 49.00-52.00; Medium 45.00-48.00. Springing Heifers to 700.00. Pigs, Hd.- Steady to \$1.00 higher. 20-30 lbs. 19.00-35.00; 40-80 lbs. 36.00-55.50. Shoats by Lb. 43.00-50.00. Slaughter Hogs- \$1.00 higher. 215-235 lbs. 49.50-51.00; 240-265 lbs. 47.50-49.50; 190-210 lbs. 44.50-49.00.

SPECIAL NEXT WEEK: 4H & F.F.A. Hog Show Tuesday, Feb. 12 at 7:00 P.M. Hogs will be sold Wednesday, Feb. 13 at 8:30 P.M.

HATFIELDS TOPS THIS WEEK \$51.50.

Four States Livestock

Hagerstown, Md.

Wednesday, February 6

Report supplied by Auction
SLAUGHTER: Fed Steers- Steady. Low Choice 62.00-63.75; Good 56.00-61.00; Medium 55.00 down. Heifers- Good 50.00-53.25; Medium 44.00-49.00. Cows- Good run very active \$3.00 higher. High Yield 44.00-48.75; Average 39.00-43.00; Big Middle 36.00-38.00; Fatty Heif. 35.00-40.00; Shelly 38.00 down. Fat Bulls- Steady. Good 47.00-48.75; Medium 44.00-46.00. Veal Calves- \$2.00-4.00 higher. Choice 92.00-96.00; Good 80.00-



Looking For More Farm Income? OPPORTUNITY KNOCKS IN THE HOG BUSINESS

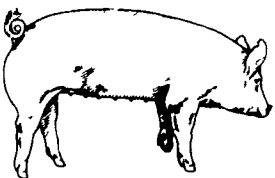
We're Contracting Farrowing Units, Farrow to Finish Operations And Finishing Floors. We Have Full Programs To Make Your Hog Operation Successful.

All Inquiries Confidential

Send Name, Address, County and Phone Number to:

Lancaster Farming

Box 366, L-37
Lititz, Pa. 17543



EMERY'S BUYING STATION

OPEN TO RECEIVE YOUR MARKET HOGS

AT THE GREEN DRAGON MARKET RD 4, EPHRATA, PA 17522 1 MILE NORTH OF EPHRATA ON NORTH STATE STREET.

HOURS: MONDAY, TUESDAY, and WEDNESDAY 6:00 A.M. to 11:30 A.M. 215-458-5677 Residence 717-733-9648 Office

YOU ARE PAID FOR YOUR HOGS IMMEDIATELY

Ken & Lois Emery, Proprietors



GWALTNEY of SMITHFIELD, LTD.

We will receive your market hogs

Mondays, Wednesdays, Thursdays & Fridays

NOTE OUR WINTER HOURS 7 A.M. to 1 P.M.

Located at the Vintage Sales Stables, Paradise, PA

You will be paid immediately.

No commission or yard fees deducted.

Reduced waiting time.

Premium prices are paid for extra fancy hogs.

For Information Call

Ed Herrmann or Charlie Kauffman 717-442-4742



Be Wise . . . Check our prices before you buy!!

We will deliver in the Delmarva area.

SPRAY MATERIALS

- * ATRAZINE
- * DUAL
- * LASSO
- * SUTAZINE
- * ROUND UP
- * LASSO- ATRAZINE
- * BLADEX
- * BANVEL
- * LOROX
- * TOXAPHENE
- * PARAQUAT
- * PRINCEP
- * EXTRAZINE
- * COUNTER
- * DYFONATE
- * FURADAN
- * LORSBAN

SAVE ON BULK HERBICIDES

• BICEP • LASSO-ATRAZINE • PROWL

MELVIN R. WEAVER

2213 Leabrook Road, Lancaster, PA 17601
Ph: 717-569-6576 or 898-8354

SWINE PRODUCTION SALES AND SERVICE

Complete Feeding Programs and Services

Feeding Programs to Meet Your Individual Needs

Computerized Record Keeping System

Providing Veterinarian Service

PA. Toll Free 1-800-468-5524



419 W. High Street
Elizabethtown, PA 17022

Supplying Farm Fresh Feeder Pigs

Marketing and Hedging Services

Marketing of Genesis Breeding Stock

Developing Individual Financial Programs

Direct Dial (717) 367-1525