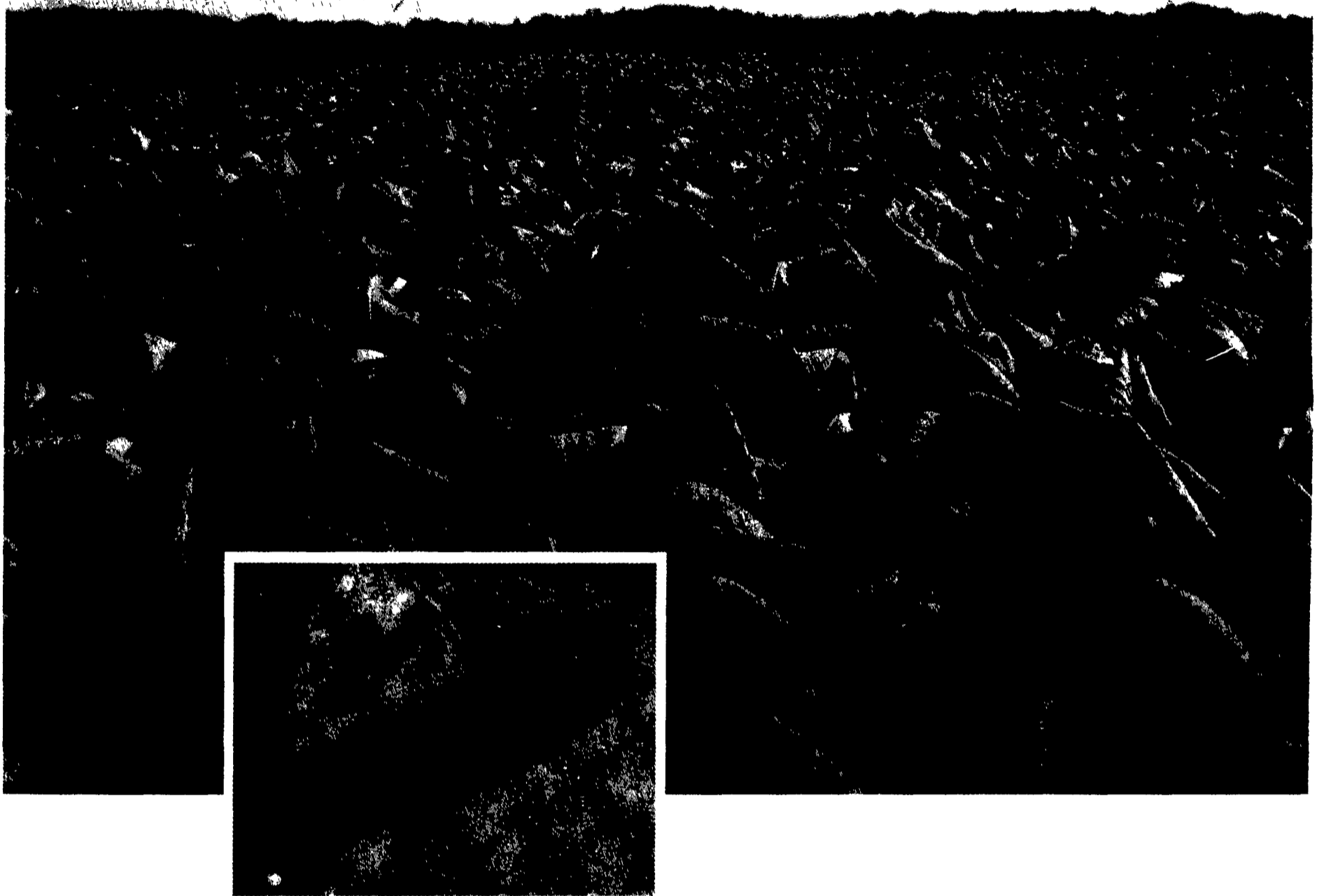


LORSBAN* insecticides: The only way to protect your tobacco from cutworm damage.



You've got your share of problems raising burley tobacco. But cutworm damage doesn't have to be one of them when you use LORSBAN* insecticides — the only insecticides that effectively control cutworms in burley tobacco.

You'll like the way LORSBAN insecticides stop cutworm damage fast and effectively. But what you'll like even better is their application flexibility. LORSBAN* 15G and LORSBAN* 4E are formulated to fit the way you farm so there's no need for special application equipment or extra trips across your field.

For six years, LORSBAN insecticides have proven their ability to control cutworms. Fact is, you can't buy a better insecticide for prevention of cutworm damage.

This year, don't let cutworms get started in your tobacco. For unparalleled protection and application flexibility, use LORSBAN 15G Granular or LORSBAN 4E Liquid Insecticides.

Regardless of the insecticide you choose, ALWAYS READ THE LABEL BEFORE USE AND ALWAYS CAREFULLY FOLLOW ALL LABEL DIRECTIONS AND PRECAUTIONS for safe use.



*Trademark of The Dow Chemical Company

**Where they fit,
nothing works better.**

LORSBAN* insecticides fit the way you apply insecticides.
1. LORSBAN 4E plus herbicides impregnated on dry fertilizer, broadcast spread and double disced.
2. LORSBAN 4E plus other insecticides, herbicides and soil fungicides, broadcast sprayed and double disced.
3. LORSBAN 15G broadcast spread and double disced.
4. LORSBAN 15G bulk-blended with other granular insecticides and dry fertilizer, broadcast spread and double disced.

