



**February
Tire
Values!**

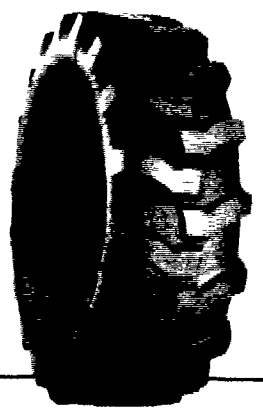
For Special Mounting
Price...
Call For Quote!

ARMSTRONG
FARM TIRES

**ALL ORDERS OVER \$250.00 DURING
FEBRUARY DELIVERED FREE
TO YOUR FARM!**
(Under \$250...Only A Small Fee Extra)

ARMSTRONG
WE GO THE EXTRA MILE

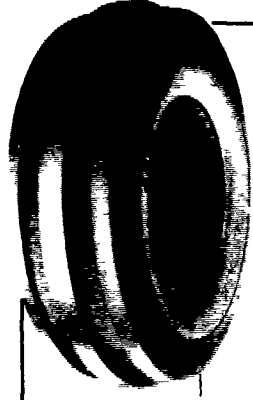
**Loader-
Dozer**



- ★ TUBELESS ★**
- 16 9x24 8 ply - \$265.00
 - 16 9x24 10 ply - \$330.00
 - 17 5Lx24 6 ply - \$240.00
 - 17 5x24 8 ply - \$270.00
 - 15 5x25 12 ply - \$320.00
 - 17 5x25 12 ply - \$445.00

- ★ TUBE TYPE ★**
- 14 9x24 6 ply - \$200.00
 - 14 9x24 8 ply - \$220.00
 - 16 9x24 6 ply - \$220.00
 - 16 9x24 8 ply - \$235.00
 - 16 9x24 10 ply - \$280.00
 - 17 5Lx24 8 ply - \$240.00
 - 16 9x28 8 ply - \$260.00
 - 18 4x28 10 ply - \$340.00
 - 20 5x25 12 ply - Call For Quote
 - 23 5x25 16 ply - Call For Quote
 - 1300x24 10 ply - \$225.00
 - 1300x24 12 ply - \$245.00
 - 1400x24 10 ply - \$255.00
 - 1400x24 12 ply - \$280.00

Front Tractor



- 400 12 \$22.00
- 400 15 \$24.00
- 500 15 \$31.00
- 550 16 4 ply \$33.00
- 550 16 6 ply \$36.00
- 600 16 4 ply \$37.00
- 600 16, 6 ply \$41.00
- 650 16 6 ply \$42.00
- 75L 15 6 ply \$50.00
- 750 16 8 ply \$54.00
- 750 16 6 ply \$50.00
- 750 18 6 ply \$64.00
- 9 5L 15 6 ply \$55.00
- 9 5L 15 8 ply \$60.00
- 1000 16 6 ply \$80.00
- 11Lx15 8 ply \$75.00
- 1100 16 8 ply \$110.00
- 14L 16 1 8 ply \$160.00

Above Tires Shipped UPS -
No Charge!



Armstrong's
RED DATE
All American
RED DATE

Get \$150 in U.S. Savings Bonds
when you move up to
Armstrong Tractor Radials.



Buy a pair of Super Hi-Power
Lug Radial tires and Armstrong
will send you \$150 in US
Savings Bonds

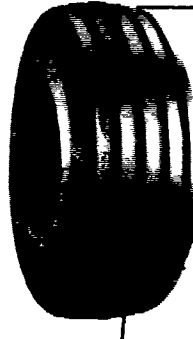
**SUPER
HI-
POWER
LUG
RADIALS!**

- 18 4R34 6 Ply \$399.00
- 16R38 6 Ply \$429.00
- 18 4R38 6 Ply \$459.00
- 18 4R38 8 Ply \$529.00
- 20R34 8 Ply \$639.00
- 20 8R38 8 Ply \$649.00
- 20 8R38 10 Ply \$699.00

**Hi Power
Lug**



- 11 2x24 4 ply 100.00
- 14 9x24 4 ply 150.00
- 14 9x24 6 ply 165.00
- 14 9x24 8 ply 190.00
- 16 9x24 6 ply 190.00
- 16 9x24 8 ply 210.00
- 14 9x26 6 ply 172.00
- 18 4x26 6 ply 235.00
- 23 1x26 8 ply 525.00
- 11 2x28 4 ply 115.00
- 12 4x28 4 ply 130.00
- 13 6x28 4 ply 145.00
- 13 6x28 6 ply 160.00
- 14 9x28 4 ply 160.00
- 14 9x28 6 ply 175.00
- 16 9x28 6 ply 220.00
- 16 9x28 8 ply 240.00
- 16 9x30 6 ply 230.00
- 18 4x30 6 ply 270.00
- 23 1x30 8 ply 650.00
- 24 5x32 10 ply 750.00
- 16 9x34 6 ply 255.00
- 18 4x34 6 ply 299.00
- 18 4x34 8 ply 325.00
- 20 8x34 6 ply 459.00
- 20 8x34 8 ply 510.00
- 23 1x34 8 ply 689.00
- 11 2x38 4 ply 140.00
- 12 4x38 4 ply 168.00
- 13 6x38 4 ply 179.00
- 13 6x38 6 ply 198.00
- 14 9x38 6 ply 224.00
- 15 5x38 6 ply 225.00
- 16 9x38 6 ply 279.00
- 18 4x38 6 ply 325.00
- 18 4x38 8 ply 365.00
- 20 8x38 8 ply 510.00



**1100x16
12 Ply
Tube Type
\$135**



**1100x16
12 Ply
Tubeless
\$150**

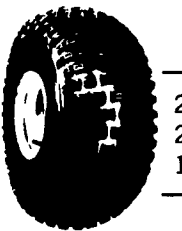
**Skid
Loader
Tires**

- 700x15 6 ply \$65.00
- 750x15 6 ply \$68.00
- 10 16 5 6 ply \$80.00
- 12 16 5 8 ply \$120.00
- Steel Shield
- 10 16 5 6 ply \$95.00

Above Tires Shipped
To You FREE

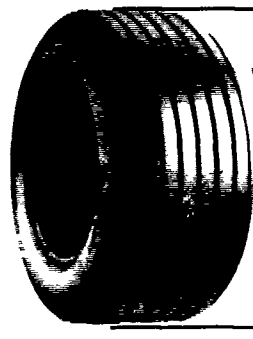
**Contractor
F-3**

- 11Lx15 8 ply \$80.00
- 11Lx16 8 ply \$92.00
- 11Lx16 10 ply \$98.00
- 750 800x16 10 ply \$80.00
- 11Lx16 12 ply \$130.00
- 145 75 16 1 10 ply \$225.00



- 22x11.00-8 \$38.01
- 25x12-9 \$54.71
- 18x950-8 \$30.65

Wagon Tires



Subtract
\$5.00
February
Special

We Ship To You
UPS!
• No Charge

- 26 1200x12 4 ply 49.00
- 8 5Lx14 6 ply 41.00
- 9 5Lx14 6 ply 44.00
- 9 5Lx14 8 ply 49.50
- 11Lx14 6 ply 49.00
- 9 5Lx15 6 ply 42.00
- 9 5Lx15 8 ply 44.00
- 11Lx15 6 ply 43.00
- 11Lx15 8 ply 47.00
- 11Lx15 8 ply tubeless 50.00
- 11Lx16 8 ply 58.00
- 11Lx16 10 ply tubeless 74.00
- 12 5Lx15 10 ply 75.00
- 12 5Lx16 14 ply 85.00
- 14Lx16 1 12 ply 140.00
- 16 5Lx16 1 10 ply tubeless 160.00

**Small
Rear
Farm**



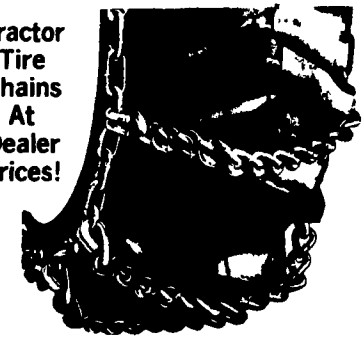
- 750x20 4 ply 59.95
- 750x24 4 ply 64.95
- 8 3x24 4 ply 79.00
- 9 5x24 4 ply 84.00
- 11 2x34 4 ply 135.00
- 11 2x36 4 ply 137.00
- 12 4x36 4 ply 155.00
- 13 6x36 4 ply 189.00

**Used Grass Tires
In Our Stock**



- 8 3x24 \$95.00
- 9 5x24 112.00
- 14 9x24 6 ply 195.00
- 16 9x24 6 ply 210.00
- 18 4x16 1 6 ply 245.00
- 18 4x26 6 ply 340.00
- 11 2x28 4 ply 152.00
- 13 6x28 6 ply 225.00

**Tractor
Tire
Chains
At
Dealer
Prices!**



Call Us For Price Quote!

Ask About Our
4 Year Guarantee on Rear Tires
Strongest In The country

We Install Tires On Your Farm

- Centre Hall • Williamsport
- Sunbury • Allentown
- North Penna. • New Jersey
- Northern Maryland

Route 230
West

MUMMAU TIRE

Mt Joy,
PA

Serving Farmers In Penna. New Jersey
Northern Maryland and Delaware

Out Of State 717-653-1260 In Penna. 1-800-222-1729