

# Lancaster Farming

VOL. 30 No. 14 Four Sections Lancaster Farming, Saturday, February 9, 1985 \$7.50 per year

## PYFA names Outstanding Young Farmers

BY JACK HUBLEY

**SOMERSET** — The naming of this year's outstanding Young Farmers highlighted the Pa. Young Farmers Association's winter convention held at the Ramada Inn, Somerset, on Wednesday and Thursday.

To qualify for the Outstanding Young Farmer under 30, Outstanding Young Farmer over 30, or Outstanding Community Service Awards at the state level, applicants must first receive one of these honors on the regional level.

Regional winners in the "under 30" competition were as follows:

• Region II: David and Judy Gerhart, Solanco Young Farmers Chapter, Lancaster Co.

• Region III: Lee and Kathy Spangler, Union Co.

• Region IV: John Bigham, Gettysburg Chapter, Adams Co.

• Region V: Douglas and Debra Hillegass, Berlin Brothersvalley Chapter, Somerset Co.

• Region VII: David and Phoebe Bitler, Kutztown Chapter, Berks Co.

Regional winners "over 30" were:

• Region II: Dale and Fay Herr, Solanco Chapter, Lancaster Co.

• Region III: Kenneth and Edna



Kathy and Lee Spangler of Union County received the PYFA's Outstanding Young Farmer Award in the under-30 category.

Smith, Middleburg Chapter, Snyder Co.

• Region IV: Ken and Becky Shoenberg, Shippensburg Chapter,

Franklin Co.

• Region V: James and Bonnie Ringler, Berlin Brothersvalley

(Turn to Page A10)



Recipients of the Pa. Young Farmers Outstanding Young Farmer over 30, were A. Dale and Fay Herr of Lancaster County.

With 95% sign-up

## Over-order pricing can save Northeast dairies

BY WENDY WEHR

**HARRISBURG** Independent and co-op dairymen unite! By joining in a common marketing agency you can institute over-order pricing in the Northeast — and ensure that you and your neighbor receive higher, fairer prices for your milk.

That's the message being delivered by the advocates of an ambitious plan to achieve over-order pricing in the Northeast via the Regional Cooperative Marketing Agency, Inc. (RCMA). Arthur Little, RCMA executive director, outlined the organization and its goals to members of the farm press and representatives of Pa. Farmers Union and the State Grange in Harrisburg on Thursday.

Over-order pricing — obtaining a price for milk producers which is higher than the minimum Class 1 prices established under the federal marketing orders — has been successful in some 35 areas throughout the country, with a range of over-order prices from 12 cents to \$1.83 per hundredweight being paid to farmers. At the Thursday meeting, Little called for over-order pricing in Federal Orders 1, 2 and 4, and he claimed that RCMA is the logical organization to accomplish the pricing scheme.

During the early 1970's, RCMA then an organization of Northeast co-ops — successfully established over-order prices in New England and Western New York, collecting nearly \$22 million over a 18-month period with payments to producers ranging

from 3 cents to 85 cents per hundredweight.

Since that time, explained Little, the legality of RCMA was tested in court, and the U.S. Supreme Court upheld over-order pricing and gave the common marketing agency a formal legal basis. Furthermore, he said, RCMA has now been restructured to allow individual producers to become members and be fully represented in the marketing agency.

We are assuring nonco-op members they will have equal representation in RCMA," said Little as he displayed an organizational chart showing independents organized by regions. Directors from the regions and co-ops will meet to determine what over-order pricing — according to an economic formula — should be established each month.

But the catch is that for RCMA to achieve over-order pricing and equity for handlers and producers, virtually all dairy farmers must join RCMA.

**Total farmer participation**

At least 95 percent of the dairy farmers must be members of RCMA either on an individual membership basis or through their cooperative before the program is put into effect, said Little. To accomplish 95 percent sign-up, an estimated 10,000 nonco-op members as well as all dairy cooperatives must sign member marketing agreements.

Some major co-ops, including Danylea, Lehigh Valley and NFDCO, already belong to RCMA.

(Turn to Page A12)

## Builder's Conference features 3 farms

BY JANE BRESEE  
Staff Correspondent

**TOWANDA** — Approximately 70 builders, building supply representatives and agricultural engineers attended the fourth annual Pa. Farm Builders' Conference and Tour on Jan. 30, and 31, at the Elks Club in Towanda, Bradford County.

Sponsored by the Penn State Extension's Department of Engineering, the purpose of the event was to acquaint farm

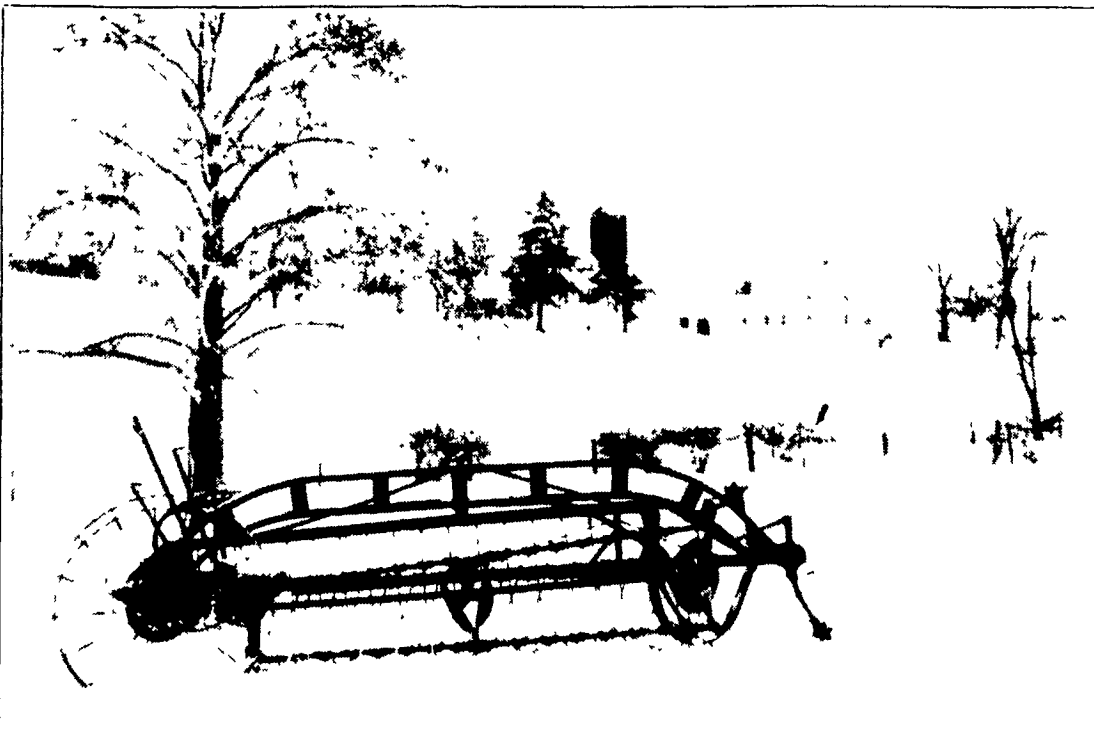
builders with up-to-date information through an all-day tour of two dairy farms, a large veal operation and Masonite Corporation, a manufacturer of hardboard products. Also on the program was a full slate of conference speakers.

**Formula I**

The tour group bus first stopped near New Albany at Formula I Inc., said to be the largest veal operation in Pennsylvania. The operation began in the early 60's

when Walter Newton, a farmer dealing in poultry and feeder lambs, got involved in marketing veal calves. He organized his own veal operation, buying Holstein calves from the stockyard and paying farmers to grow them. He furnished the feed which perfected and patented as Formula I Feeds, Inc. Presently he sells feed into 13 states through a distributor system, and contracts out veal calves to about 30 veal growers in

(Turn to Page A34)



Though most of us aren't too happy about having to drive in the stuff, it's hard to find fault with a fresh blanket of snow that manages to turn a lackluster winter landscape into a scene from Currier & Ives