



Lebanon County DHIA Monthly Report

OWNER	BREED	NO. COWS	% DAYS IN MILK	LBS. MILK	LBS. FAT
Fort Zeller Farm	B3	53 9	85 8	19,361	744
Willow Maple Farm	3	43 6	91 2	20,119	737
Dale Hostetter&Sons	3	93 6	86 3	18,502	731
Roy H Weaver	3	54 2	89 4	20,540	724
Raymon&Marlin Getz	3	57 4	85 9	18,624	715
Robert Martin	B3	51 5	87 4	18,333	714
Conewago View Farms	B3	67 5	87 5	18,313	711
Marvin K Meyer&Sons	B3	102 5	90 4	18,071	710
Elvin Martin	B3	47 7	83 1	19,432	708
David Brandt	3	70 6	88 8	19,619	707
Roy E Nolt	B3	59 4	86 5	18,991	703
Gary Lentz	3	71 5	86 0	18,880	692
Donald G Hoffer	3	43 9	86 6	18,698	691
Arthur R Krall&Son	3	61 4	83 8	18,164	690
Arnold Acres	3	118 8	88 0	18,264	685
Hoover Farms	3	116 5	83 4	18,112	685
Eugene R Houser	3	32 8	90 2	17,399	684
Lentzdale Farms	3	77 1	87 5	18,243	683
Gary Mase	B3	31 0	85 4	18,664	681
Melvin M Nolt	B3	58 0	86 2	17,602	681
Wernerway Farms	B3	127 7	87 5	17,762	676
David Weaver	B3	41 8	88 9	18,071	676

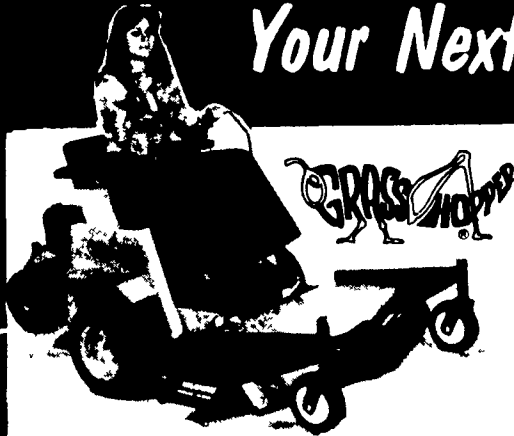
December 1984

Sonnen Acres Farm#1	B3	54 9	85 8	18,271	674
M Luther Bennetch	G3	76 3	88 6	16,960	672
Reuben O Martin	B3	70 5	84 9	17,761	668
Dennis Wampler	B3	84 5	87 8	17,547	667
Walter K Heisey	B3	60 2	87 3	18,071	662
Richard&Ronald Shirk	3	77 8	88 3	16,553	661
Robert B Smith	2	68 4	86 9	13,595	661
Hershey Bare	3	88 9	87 3	16,844	659
Kenneth Mase	B3	98 5	85 9	16,855	659
Harvey T Borgardner	3	96 5	85 6	17,617	659
Irvin Z Brubaker	B3	49 3	85 8	18,356	658
Marlin M High	G3	41 9	85 9	17,993	658
Vincent A Wagner	3	47 4	86 2	18,049	657
Daniel B Shirk	3	39 5	90 5	18,459	655
Glen R Martin	B3	25 1	90 0	18,269	651
Mervin W Horst	3	46 1	87 2	17,398	651
Mark H Bomberger&Son	B3	86 7	88 0	17,015	650
Ferndale Farms	3	79 2	83 8	17,283	648
John Brubaker	B3	50 0	88 9	17,468	648
Kirby L Horst	3	45 4	86 3	16,762	641
Lester Martin	B3	58 3	90 4	16,705	640
Lloyd Burkholder Jr	B3	53 4	83 4	17,608	639
Richard L Heilinger	B8	15 2	85 3	16,783	639
David Eugene Reiff	3	48 4	87 3	17,772	638
Lloyd S Newswanger	B3	72 6	86 3	17,000	637
Jay&Carol Hershey	3	38 9	84 6	18,245	633
Leon M Burkholder	B3	47 4	89 8	16,869	630
Mark C Patches	B3	101 9	86 0	15,722	627

(Turn to Page D29)

GRASSHOPPER

Your Next Mower



1. ZERO TURNING RADIUS ELIMINATES HAND TRIMMING (Because your mower deck is out front)
2. ALL HYDROSTATIC DRIVEN
3. MOWER P.T.O. SHAFT DRIVEN
4. ELECTRIC CLUTCH (Some Models)

FREE Model 2044 Mower Deck
(Value... \$756) With The Purchase Of A
12 H.P. GRASSHOPPER
FOR ONLY... \$3,096
Plus Setup & Freight

Purchase A 16 H.P. GRASSHOPPER
And Receive A Model 6044 Mower
Deck FREE (Value \$812)

Other Models Up To 18 H.P., Including
NEW WATER-COOLED DIESEL Available
At Any Of The Following

DEALERS

PENNSYLVANIA

BERKS CO.
ERB & HENRY EQUIP., INC.
New Berlinville, PA
Ph. 215-367-2169

CENTRE CO.
RISHEL'S SALES & SERVICE
Spring Mills, PA
Ph 814-422-8826

RISHEL'S SALES & SERVICE
State College, PA
Ph 814-238-7788

CHESTER CO.
LORD'S EQUIP.
Elverson, PA
Ph 215-286-9101

STOLTZFUS FARM SERVICE
Cochranville, PA
Ph. 215-593-2407

THOMAS POWER EQUIP.
Avondale, PA
Ph 215-268-2181

COLUMBIA CO
BALSCHI'S EQUIP.
Catawissa, PA
Ph 717-356-2341

CUMBERLAND CO.
PETERMAN FARM EQUIP.
Carlisle, PA
Ph 717-249-5338

FRANKLIN CO.
SHANK'S LAWN EQUIP.
Chambersburg, PA
Ph 717-375-4455

HUNTINGDON CO.
SHOEMAKERS TEXACO SERVICE CENTER
Huntingdon, PA
Ph 814-627-0663

LANCASTER CO.
R.S. HOLLINGER
Mountville PA
Ph 717-285-4538

LAWN CARE OF PA.
Martindale, PA
Ph 215-445-4541

MESSICK FARM EQUIP.
Elizabethtown, PA
Ph 717-367-1319

LEBANON CO.
HEISEY FARM EQUIP. CO.
Jonestown, PA
Ph 717-865-4526

UMBERGER'S OF FONTANA
Lebanon, PA
Ph 717-867-5161 & 867 2613

LEHIGH CO.
KERMIT KISTLER, INC.
Lynnport PA
Ph 215-298-2011

MAURER'S MOWER SALES & SERVICE
Allentown, PA
Ph 215-437-0452

MONROE CO.
STOUT'S MOWER SERVICE
Stroudsburg, PA
Ph 717-992-4585

NORTHAMPTON CO.
MONTANDON EQUIP. CO.
Montandon, PA
Ph 717-524-2473

SCHREIB & SON
Bath, PA
Ph 215-837 7681

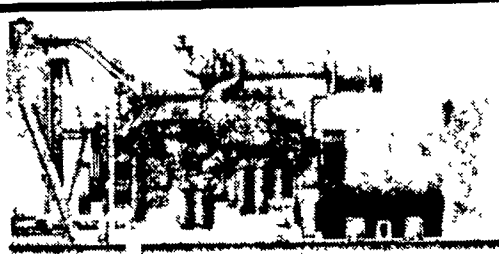
WYOMING CO.
DRC POWER EQUIP. CO.
Tunkhannock, PA
Ph 717-836-2424

YORK CO.
STRALEY FARM SUPPLY, INC.
Dover, PA
Ph 717-292-2631

NEW JERSEY BERGEN CO.
D. & H. MACHINERY CO.
Mahwah, NJ
Ph 201-327-6750

BURLINGTON CO.
LAWN MOWERS UNLIMITED
Maple Shade, NJ
Ph 609 778-8484

MONMOUTH CO.
W.H. POTTER & SON
Middletown, NJ
Ph 201-671-0552



GENERATOR SETS BUY DIRECT FROM THE MFG. AND SAVE \$\$\$

Martin Machinery Offers A Large Selection Of Quality Generator Sets — 1 KW to 1400 KW — At Great Savings! We Have Many Options Available Which Enables Us To Design And Manufacture Each Unit To Meet Your Individual Needs

For Pricing And More information Contact

MARTIN MACHINERY
215-445-4585 Telex 522372 IP-A-HOWD
Call Today!

CUSTOM MADE FEED BINS FOR FARMS — FEED MILLS



- Made of 13 gauge Steel
- All welded seams
- Gravity Flow or Auger

Free Estimates

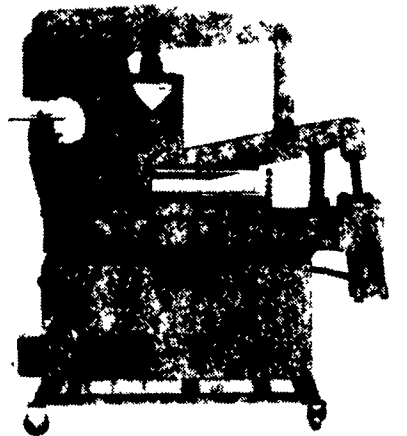
Also - Steel Roof Trusses for Buildings - Portable Hog Buildings - Bucket Elevators - Grain Augers - Distributors - Flow Pipes & Accessories

We Sell, Service & Install
Ph: 215-944-7808

STOLTZFUS WELDING SHOP

Owner - Samuel P. Stoltzfus
RD 1011, Dryville Rd.
Fleetwood, PA 19522

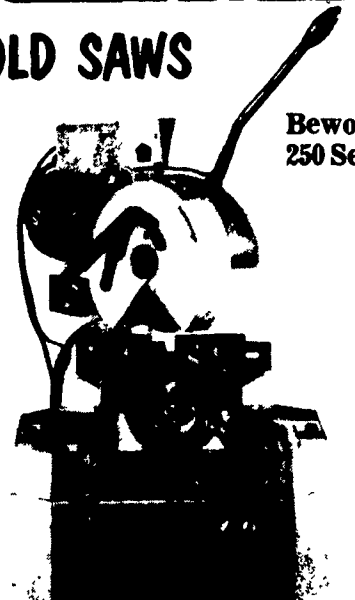
Scotchman HYDRAULIC IRONWORKERS NEW MODEL 4014-C



Standard Features:

- punch 40 ton, 6 inch throat
- angle shear up to 3x3x5/16 inch, miter up to 2x2x5/16 inch to 45°
- bar shear 14 inch blade length
- 3 HP, 220/440 volt, 3 phase electrics

Scotchman COLD SAWS



Bewo CPO
250 Series

Standard Features:

- Machine Base With Coolant Tank
- Double Material Vise (Self-Centering)
- Coolant Pump
- Two Cutting Speeds (30/60 RPM) or (60/120 RPM)
- Patented Guarding System
- Miter Locking Device
- 220V or 440V 60/Hz 3 Phase (Specify)

3 MODELS TO CHOOSE FROM
Other Models Available

Ask For DAVID S. KING AT:
WILHELM'S HARDWARE

Toys - Housewares - General Hardware

18-20 So. Railroad St., Myerstown, PA 17067

PH: (717) 866-5394

Store Hours: Mon.-Sat. 7 AM - 5 PM