

Livestock market and auction news

St. Louis Cattle

Thursday, January 3
Report supplied by USDA

Receipts This Week	2300
Last Week	1400
Last Year	5500

Compared to last week's close, Slaughter Steers steady to weak. Slaughter Heifers steady to weak, instances .50 lower. Slaughter Cows 1.00-3.00 higher. Slaughter Bulls steady in a light test. Slaughter supply light due to New Years Holiday in the middle of the trading week. Around 30% Cows.

SLAUGHTER STEERS: Mixed Choice and Prime 2-4 1050-1300 lbs. 65.50-66.00, load 1175 lbs. 66.25. Choice 2-4 1000-1300 lbs. 64.50-65.50; 900-1000 lbs. 63.00-64.50. Mixed Good and Choice 2-3 900-1200 lbs. 63.00-64.50. Good 2-3 900-1175 lbs. 60.00-63.00. Mostly Good 2-3 1100-1500 lbs. Holsteins 54.00-57.50.

SLAUGHTER HEIFERS: Mixed Choice and Prime 2-4 900-1100 lbs. 63.50-64.00, several 64.00. Choice 2-4 900-1075 lbs. 62.50-64.00, mostly 62.50-63.50; 800-900 lbs. 61.00-62.50. Mixed Good and Choice 2-3 800-1000 lbs. 60.50-62.50. Good 2-3 750-975 lbs. 58.00-60.50.

COWS: Breaking Utility and Commercial 2-4 37.00-41.00. Cutter and Boning Utility 1-2 36.00-41.00. few High yielding Utility 1-2 41.00-43.00. Canner and Low Dressing Cutter 1-2 32.00-36.00. Shelly canner 1-2 27.00-32.00.

BULLS: Yield Grade 1-2 1200-1800 lbs. 41.00-46.00.

SHEEP: Wednesday's weekly sheep auction. Receipts around 150 head. Compared to last test two weeks ago, Slaughter Lambs both woolled and shorn 4.00-5.00 higher. Not enough of any other class to test market trends. Demand light for light supply.

SLAUGHTER LAMBS: Mixed Choice and Prime Woolled 100-130 lbs. 56.00-59.50. Same grade shorn with NO. 1 and 2 pelts 100-130 lbs. 59.50-60.00, one small lot 62.50.

SLAUGHTER EWES: Scarce
FEEDER LAMBS: Scarce
GOATS: Few 16.00-23.50 per head.

FEEDERS: (including around 1100 at the regular Thursday auction.) Feeder Steers and Heifers 1.00 higher except Steers over 800 lbs. steady and Heifers over 700 lbs. weak. Trading moderate to active. Supply moderate, consisting mostly of 400-700 lb. Steers and 300-600 lb. Heifers.

FEEDER STEERS: Medium and Large Frame 1; 400-600 lbs. 60.00-64.50, one lot 66.00; 600-700 lbs. 61.00-66.00; 800-1000 lbs. 58.00-63.00. Medium and Large Frame 1-2; 350-600 lbs. 51.00-58.00. Small Frame 1-2; few 300-700 lbs. 51.00-56.00. Large Frame No. 2 Holsteins; few 700-1200 lbs. 46.00-47.00.

FEEDER BULLS: Medium Frame 1-2; few 450-700 lbs. 45.00-55.00.

FEEDER HEIFERS: Medium and Large Frame 1; 300-400 lbs. 50.00-53.50, one lot 55.00; 400-500 lbs. 48.00-53.00, one lot 57.00; 500-700 lbs. 53.00-57.00. Few 700-800 lbs. 49.00-50.00. Medium and Large Frame 1-2 few 400-600 lbs. 48.00-50.00.

Omaha Weekly

Thursday, January 3
Report supplied by USDA
Steers and Heifers turned weak to .50 lower this holiday shortened

session with buyer demand cautious and selective. Overall finish proved mediocre, while numbers of cattle carrying some degree of mud increased. Cows experiencing good demand as session ended and recovered some Monday's declines, closing 1.00-3.00 lower. Slaughter Bulls firm.

Estimated 4 day receipts 4500; actuals last week 4119; last year 9023; Steers comprised 42 pct of the week's receipts; Heifers 28 pct.; Cows 23; Feeders 5 pct.

SLAUGHTER STEERS: Two loads reputation fed Choice, some Prime 2-4 1225-1300 lbs. 67.50. Choice 2-4 1050-1250 lbs. 65.50-67.00. Mixed Good and Choice 2-3 1000-1150 lbs. 64.00-66.00. Few Good 61.00-63.00. Few packages Mixed Good and Choice 2-3 1200-1325 lbs. Holsteins 56.00-57.50.

SLAUGHTER HEIFERS: Load reputation fed Choice 2-4 near 1050 lbs. 66.00. Choice 2-4 950-1100 lbs. 64.50-65.75. Mixed Good and Choice 2-3 900-1025 lbs. 62.00-64.50. Good 59.00-62.00.

Average of LS-214 detailed quotations for 900-1100 lb. Choice Steers 65.25; 1100-1300 lbs. 66.50. Average cost Steers 65.24, average weight 1170 lbs. as compared 65.74 and 1172 lbs. a week ago. Average cost Heifers 64.27, average weight 1026 lbs.; as compared 64.26 and 1016 lbs. a week ago.

COWS: Breaking Utility and Commercial 2-3 37.50-42.00, mostly 38.50-41.50, few to 43.50. Cutter and boning Utility 1-2 36.00-40.50, high dressing to 42.00. Canner and Low Cutter 34.25-37.75.

BULLS: 1-2 1200-2400 lbs. 44.25-48.00, individual high dressing to 52.25.

Weekly Summary

Harrisburg, Pa.

Friday, Jan. 4

Report supplied by PDA
7 Livestock Markets

CATTLE: 2010. Compared with 1482 head last week, and 5184 head a year ago. Compared with last week's market: Sl. steers grading Choice steady to strong, Standard & Good steady to weak. Sl. cows steady to .50 lower. Sl. steers: few high Choice & Prime 71.85-73.25, Choice 67.00-70.00, Good 58.00-64.25, Standard 46.00-54.00. Sl. heifers: Choice 58.00-66.00, Good 52.50-61.00, Standard 42.00-53.00. Sl. cows: Breaking Utility & Commercial 37.75-42.00, Cutter & Boning Utility 36.00-40.00, Canner & low Cutter 30.00-35.50, shells down to 23.00. Sl. bullocks: few Choice 55.00-60.00, few Good 51.00-56.50, few Standard 45.00-53.25. Sl. bulls: Yield Grade 1, 1200-2100 lbs. 48.00-54.75, few Yield Grade 2, 900-1400 lbs. 40.00-49.00.

FEEDER CATTLE: Steers, Large & Medium Frame No. 1, 400-750 lbs. 53.00-64.00; Heifers, Medium Frame No. 1, 300-500 lbs. 43.00-52.00; Bulls, few Medium Frame No. 1, 350-750 lbs. 50.00-58.00.

CALVES: 2074. Compared with 1243 head last week, and 4109 head a year ago. Vealers Good & Choice grades steady to strong, Standard & low Good steady to weak. Few Prime 107.00-116.00, Choice 82.00-105.00, Good 60.00-90.00, few 110-130 lbs. 54.00-66.00, 90-110 lbs. 45.00-54.00, 70-90 lbs. 38.00-48.00; Utility 50-100 lbs. 20.00-42.00; Hol. Bulls 90-130 lbs. 60.00-81.00; Hol. Heifers few 90-125 lbs. 50.00-61.00.

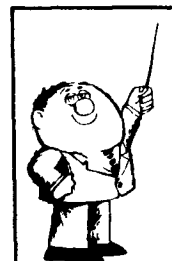
HOGS: 4337. Compared with 3359 head last week, and 4622 head a

year ago. Fully 1.50 to 2.50 lower. US 1-2 210-250 lbs. 49.00-52.00, 1-3 200-260 lbs. 47.50-50.50, few 2-3 230-280 lbs. 44.85-48.00; 1-3 140-190 lbs. 43.00-48.25; Sows steady. 1-3 300-700 lbs. 38.00-45.50; Boars 25.00-36.00.

FEEDER PIGS: 560. Compared with 401 head last week, and 1990 head a year ago. Few 1-3 20-35 lbs. 17.00-24.00, 35-55 lbs. 20.00-45.00.

2 GRADED FEEDER PIG SALES: 1115. Compared with 790 head last week, and 1655 head a year ago. US 1-2 30-40 lbs. 99.00-105.00, 40-50 lbs. 88.00-103.00, 50-60 lbs. 76.00-99.00, 60-70 lbs. 71.00-97.00; 2-3 35-45 lbs. 91.00-92.00, 45-85 lbs. 60.00-74.00.

SHEEP: 86. Compared with 414 head last week, and 330 head a year ago. Few Choice 75-120 lbs. 60.00-72.00; few Good 60-90 lbs. 55.00-62.00. Sl. ewes: few 15.00-35.00.



A LESSON WELL LEARNED...
LANCASTER FARMING'S CLASSIFIED ADS GET RESULTS!
Phone 717-394-3047 or 717-626-1164

A Cage isn't enough



It takes more than wire to make a cage system. More than anything else it takes a feeder.

Sure, other components are important, but mainly it's the feeder that makes the system. That's why Big Dutchman's Systems are equipped with a SPEED FEED chain feeder that feeds every bird the right amount at the right time, without waste.

When you compare poultry equipment remember that the real test of a cage system is its feeder. Big Dutchman is ready for the test.

Big Dutchman, where proven ideas are put into action.



SYCAMORE IND PARK
255 PLANE TREE DRIVE,
LANCASTER, PA. 17603
(717) 393-5807

Route 30 West at the Centerville Exit

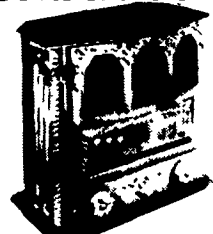
AUTHORIZED
Big Dutchman.
DISTRIBUTOR

DUSSINGER'S QUALITY STOVES

COAL & WOOD

Crane Stoves.

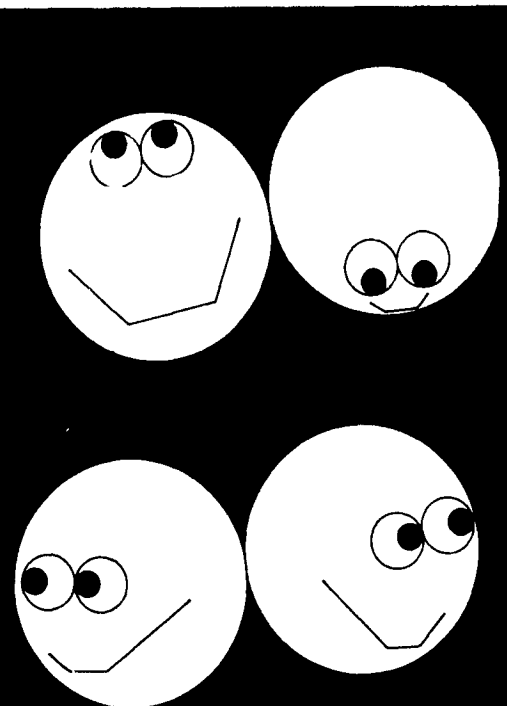
Nobody in this whole country makes a better coal stove than Crane



Glass Enclosures

by **Schaefer**

2533 Old Phila. Pike, Rt. 340
Smoketown, Pa.
T.T & F 10-8 W & S 10 till 5
Mon Appt
(717) 397-7539



DON'T LOOK ANY FURTHER!
YOU'LL FIND IT IN
LANCASTER FARMING'S
CLASSIFIEDS