

## Public Auction Register

Closing Date Monday 5:00 P.M.  
of each week's publication

SAT. JAN. 26 - 9 AM Public Sale of Many Fine Antiques, Guns, etc. Located 9 miles West of York, PA on Rt. 30 to Big Mt. Rd. thence turning North 6 miles to sale or take Rt. 234 3.4 miles East of East Berlin thence on the same Big Mt. Rd. (Follow signs to Flo-De-On Camping Area). Delores J. Shoemaker, Owner. Clair R. Slaybaugh, Auctioneer.

TUES. JAN. 29 - 4 PM Farmersville Auction in Farmersville, 3 mi. East of Brownstown, Lanc. Co., PA.

TUES. JAN. 29 - Bricktown, NJ for the Township of Brick. Vilsmeier Auction Co., Inc. **FEBRUARY**

FRI. FEB. 1 - 10 AM Horse Sale. New Holland Sales Stables, Inc., Auctioneers.

SAT. FEB. 2 - 10 AM Public Auction of Horses, Cattle, Horse Drawn Machinery, Some Household. Located in Centre Co., 3 miles East of Aaronsburg, PA, on Rt. 45, turn South on Quarry Rd. Mr. & Mrs. Israel S. Yoder, Owners. Mark Glick, Auctioneer.

THURS. FEB. 7 - Public Auction of a Holstein Herd and Horse Drawn Farm

Machine Located 1 1/2 miles NE of Oxford, Chester Co., PA. Daniel Riehl, Owner. Steve Petersheim, Auctioneer.

FRI. FEB. 8 - 9 AM Farm Equipment. New Holland Sales Stables, Inc., Auctioneers

SAT. FEB. 9 - Farm Implementations and Con- signment Sale. Call 445-4452 to advertise con- signed items. Located: Along Rt. 897 1 block South of Terre Hill behind Terre Hill Silo Co. block plant in East Earl Twp., Lanc. Co., PA. Ben Zimmerman & Son, Paul H. Zimmerman, Owners. LeRoy S. Horst, Auc- tioneer.

SAT. FEB. 9 - Public Sale of Farm Equip. and Household Goods. Located: 1 mile west of Octorara School, turn off Rt. 41 on Highland Rd. Terms by Melvin H. &

Robert E. & Jeffrey R. Martin 717-656-7770. Frank L. Steller, Auctioneers.

SAT. FEB. 9 - 9 AM Public Auction of Dairy Cows, Farm Equip., Work Horses, and Driven Horses. LOCATED: 1 mi. East of Ronks, 1 mi. West of Gordonville along Irishtown Rd., 1 mi. North Rt. 30 off Soudersburg Rd. Elam B. & Marj Stoltzfus, Owners

Snyder & Alvin Horning, Auctioneers. THURS. FEB. 14 - Public Sale of Farm Equip., Livestock, & Household Goods. Located 2 miles NW of Lititz, turn west off of 501 on Newport Rd. second farm on left. Terms by Elam M. & Naomi G. Stoltzfus. Robert E. & Jeffrey R. Martin 717-656-7770 & Frank L. Steller, Auc- tioneers.

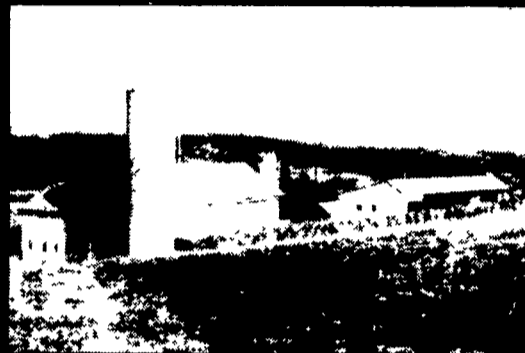
## PUBLIC AUCTION

139 ACRE FARM FARM EQUIPMENT

WEDNESDAY, JAN. 9, 1985

Real Estate at 11:00 A.M.  
Farm Equipment 10:00 A.M.

LOCATION: Take 11 & 15N. through Selinsgrove, Snyder Co., Pa. to 522 S. Take 522S. to 1st crossroads after Jct. 204. Turn right onto Salem Rd. go approx. 2 miles through Salem, Pa. to Fair Oak Rd. Turn left at Y, cross bridge to 1st blk. top road on left. Farm is on left. WATCH for AUCTION SIGNS.



REAL ESTATE consists of 139 acres +/- Total. 2 1/2 story frame house, barn, silos, 114 acres tillable & wooded land on south side of blk. top road in Penn Twp. Balance of 25 acres +/- being on North & West side of Salem Road in Middle Creek Twp.

UNIT #1: Large FRAME HOUSE w/kitchen, livingroom, diningroom, 4 bedrooms, 2 full baths, 2 screened porches, 1 sun porch, summer kitchen w/laundry & utility room, attic, partial basement w/oil fired hot air heat and gas water heater. House in emaculate condition.

BANK BARN: 40' x 76' frame w/straw shed, & cow loafing area 40' x 76'; 500 gal. bulk milk tank and outbuildings.

16' x 60' Silomatic Silo w/Titan unloader built in 1976 and 10' x 37' concrete stave silo.

IMPLEMENT SHED: 40' x 148' w/steel roof & siding, 80' corn crib, 22' x 40' shop area; like new, built in 1980.

UNIT #2: 25 acres +/- tillable & wooded land w/16' existing right-a-way. These parcels will also be offered by the entirety as 139 acres +/- with buildings.

NOTE: REAL ESTATE will also be offered in Two UNITS.

UNIT #1: Buildings and 114 acres ideal for steer or dairy operation, in high cultivation w/alfalfa, corn, pasture, ever flowing stream, beautiful wood land, in a farming community w/a valley view setting. UNIT #2: 25 acres +/- land.

REAL ESTATE INSPECTION: By Ap- pointment for house and farm buildings. Call AUCTIONEER at 717-569-2079 or Joe Zim- merman, Agent at 1-738-1458. Balance of Farm may be seen anytime. All Buildings in Good to Excellent Condition. This is a well-kept property!

TERMS ON REAL ESTATE: 10% down day of sale and balance at settlement being 30 days after sale with cash or certified check.

### FARM EQUIPMENT

Massey Ferguson 1100 Diesel Tractor w/2,744 hrs., New Holland #275 Baler and #56 hay rake, John Deere 1240 plateless corn planter, New Idea 323 corn picker, Fav-O-Rite grain bin wagon, 2 Kicker bale wagons, Lanco forage wagon w/new chassie, Trailer type 300 gal. sprayer. EQUIP. is in very good condition and will be sold at 10:00 SHARP; there are no small items for sale.

TERMS: Cash, certified check or established customer checks.

Auction By: **LEE D. AND MARY ANN HOSTETTER**  
Charles J. Ax, Atty.  
Auction Conducted By  
**AMERICAN AUCTION SERVICE**  
Kenneth Welsh, Auct., Manheim, Pa.  
Alfred G. Reist, Auct. AU-001637L  
1050 Eden Rd.  
Lanc. Pa. 17601  
717-569-2079

FOOD AVAILABLE

## PUBLIC SALE

SATURDAY, JAN. 19, 1985  
TRACTORS, FARM MACHINERY  
10:30 A.M.

Located along 322 in Guthriesville, next to Croppers Farm Market, 9 Miles East of Honey Brook, 3 1/2 Miles west of Downingtown, Chester Co.

International 444 with 1550 loader and Bucket, Farmall 560 new tires, Farmall Super M, N.H. 271 Baler with Kicker, P.T.O., like new, 450 Case Crawler with Bucket, N.H. 479 Haybine, J.D. 246 Corn Planter, like new, International 100 Balanced mower, 3 pt. with 8 extra knives, International 420 2x16 trip bottom plow, 3 pt., International 540 4 Bottom, 16" plow, International 10 ft. transport disc, International 5 ft. rotary mower, 2 J.D. 16 ft. hay wagons with racks, Case 14 ft. Dump wagon, 20 ft. wagon with hay racks, N.H. 401 crimper, International crusher, New Idea #10 corn picker, N.H. side rake, International 155 manure spreader, P.T.O. J.D. Cultivator, J.D. 3 section harrow, Smoker 24 ft. elevator, with motor, Giant 16 ft. elevator, J.D. 13 disc Grain drill, Cultipacker, 3-pt. platform, J.D. Gravity wagon, J.D. heat houser, Farmall heat houser, toro snow blower, 275 gallon gas tank on stand, truck wheels & tires, blizzard cutter, Grain Auker, 2-rolls snow fence, 2-wooden troughs, platform scale, bob sleigh, 4-horse hay wagon, spring wagon gear, walking plow, 2-rolls 10 bar wire new, 4-steelwater troughs, wooden ladder, 50 gallon drums, fog wagon, wheelbarrow, chicken crates, 3 ft.-10 ft-16 ft. gates, shovels, forks, tools, many more articles. Sale Time 10:30 A.M.

No out of state checks

Terms by  
**DAVID A. LAIRD**

Frank and Paul Snyder, Aucts.

AU-000873-L

717-733-7052

Fasnachts, Clerks

Refreshments by  
East Brandywine Fire Co.

## PUBLIC SALE

SATURDAY, JAN. 12, 1985  
10:00 A.M.

FARM EQUIPMENT & CRAWLER LOADER

LOCATED: Along Rt. 124 - 8 mi. east of York, PA., off Rt. 83 at Exit 7, or 2 mi. west of East Prospect, Pa., York County.

Farmall 656 diesel, wide front, 3 pt. front & rear weights, 95% rubber, John Deere 420 tricycle w/power steering & 3 pt. hitch, 58% rubber, John Deere 1010 crawler loader & ripper, (motor completely overhauled), New Holland 256 rake w/rubber mtd. teeth, New Holland 477 haybine, New Holland 328-2 beater PTO spreader, Ford 532 baler, 4 yrs. old, Brillion 10 ft. packer w/grass seeder attachment, J.D. F.B.B. drill 17 disk (fertilizer, seed box & grass box), 420 Int. 3X16 Trip Back plow 3 pt., Int. Transport disk 28 blade w/scrapers, Int. 4 row corn planter Model 56 w/dry fertilizer & disk openers, 9 ft. Brillion cultipacker, hay wagon, tandem axle farm trailer, 8 ft. Easy Flow lime spreader, BMB 5 ft. rotary mower - pull type, 3 pt. post hole digger 9" auger, John Deere 78-7 ft. scraper blade, 3 pt. 2 row culti., 3 barrel trailer sprayer w/booms, potato plow, cement mixer, clover seeder, 3 section spring harrow, platform scales, portable cattle loading chute & head gate Mfg. by Fry Bros., electric fences, 40 ft. extension ladder, 3 pt. platform carrier, 4 hp. roto tiller, hydraulic cylinders, metal & wooden fence post, barb wire, electric wire, page fence, dehorner, castrator, 1 1/2 ton chain hoist, 2 bar jacks, halters, stillard scales, cream separator, buck saw, shovels, forks, tow chain, Lincoln 225 welder, McCullah 12" chain saw, & other misc. farm items.

AUCTIONEER'S NOTE: Many of these items were purchased new & well taken care of. Not many small items so please be on time, sale will be over early afternoon.

TERMS: CASH OR GOOD CHECK.  
FULL SETTLEMENT SALE DAY.

**JAMES CUNNINGHAM**  
RD. #12, York, Pa.  
717-252-4373

AUCTIONEER: Blaine N. Rentzel  
Emigsville, Pa.  
717-764-6412

Pa. Auctioneer's Lic. #761.

LOTS OF THESE ITEMS HAVE BEEN IN THIS HOUSE OVER 100 YEARS

## PUBLIC SALE

VALUABLE REAL ESTATE, ANTIQUES, HOUSEHOLD GOODS, GUNS & AMMUNITION, POWER TOOLS & HAND TOOLS, FARM TRACTOR & EQUIPMENT

SATURDAY, JANUARY 5, 1985

Time 9 A.M. Sharp

Due to owner moving to smaller complex will have Public Sale at 413 Market St., Lewisberry, Pa.

Coming from York, Pa. on I-83 use Exit 13, go West on Rt. 382 approx. 4 miles to blinking light, turn right, go North to sale. From Harrisburg Pa. on I-83 to Exit 15, come South on Rt. 177 approx. 3 miles to boro. of Lewisberry, Pa. Signs Posted.

### OFFER REAL ESTATE (at 1:00 P.M.)

Nice corner lot approx 100 road frontage x 200 depth-there on erected 2 1/2 story home full attic 3 bedrooms with large closet full bath open stairway double living room with hardwood floors dining room paneled kitchen with cupboards with built in counter & stove closed inside sun porch with lavatory front side & back porches full size cement basement new well pump & heating in recent years base board hot water heat Asbestos siding & storm windows complete metal roof in good state of repair Approx 18' x 40' building used for work shop wood shed & garden shop approx 16 x 30 nice two holer barn & corn crib with attached garage all buildings in excellent shape nice mature shrubbery & trees convenient community home must be seen to appreciate plan to attend this sale. For appointment to inspect real estate (phone the Auctioneer 717 938 6322)

Term of real estate 10% down in cash or good check day of sale. Full balance in 30 days Other condition day of sale

### ANTIQUES — HOUSEHOLD GOODS — DISHES — GUNS

Matching Twin beds fold away cot bed Veneer double cedar lined wardrobe Oak 3 drawer dresser with mirror Oak dresser with mirror frame dresser with mirror meat cupboard 2 Oak wash stands 1 with towel rack several Oak flower stands Oak bow front sideboard with mirror Cherry drop leaf table nice Oak oval five shelves mirror back china closet with lion heads on top side & claw feet ball foot pine blanket chest metal single bed Oak drop leaf kitchen table Hoover porcelain top kitchen cabinet complete nice set of 4 Oak cane bottom chairs set of 4 dining room chairs odd plank bottom & cane bottom chairs 4 chrome breakfast chairs 3 piece pre war Velvet living room suite good shape 2 floor lamps solid end jelly cupboard painted Braumuller up right piano OK piano stool Oak cabinet Joy drop head treadle sewing machine Singer electric sewing machine Sharp 19 color TV on stand V.M. Voice of Music stereo & record player OK bookshelves GE 15 cu ft refrigerator OK GE auto washer OK Kelvinator elec dryer OK old GE refrigerator with compressor on top OK Maytag wringer washer like new wash tubs Kelvinator 15 cu ft deep freezer OK several mattress night stand Keosun Moonlighter heater new hardwood oak commode chair old wooden box several wall mirrors clothes hamper 2 wooden porch rockers wooden porch swing cement lawn ornaments Rayo lamp several oval braid throw rugs hook rugs 6 gal milk can copper wash boiler Snitz dryer manufactured by E B Fahrney Waynesboro Pa original round Planters peanut jar out of old Mt. Airy store Cowden & Welcox Harrisburg Pa 2 gal crock with blue (crack) Pr Cowden & Co Harrisburg Pa 3 gal crocks with handles 3 gal black crock plus other crocks chicken water with blue old ice tin lunch bucket original 1875 (our daily bread) picture original 1871 picture (Tree of Life) bric A brac picture frames deep well picture frames old pictures from Mt. Airy baby picture of Lottie Traver 36 x32 gold frame old picture album weaved Indian basket several market baskets cracker cans several prs gold framed spectacles white milk glass horn of plenty other milk glass pcs cream & sugar blue bird pattern Fiesta plates bowls & salt & pepper Altenburg Germany china hanging plate signed E Laport Amber kerosene light 2 Deitz lanterns Maytag washboard approx 60 sets of salt & peppers including Mr Peanut set of 3 sad iron 1 handle flow blue dish 2 electric brooms service for 12 dinnerware set gold trim (some missing) 1890 family Bible March 1911 newspaper peacock feather duster 6 patch comfort 4 patch quilts quilts patches linen dollies sheets pillow cases table cloths 2 burner hot plate president plate original Atlas of York County 1876 published by Promroy & Whitmay & Co glass candle holder 1870 Butlers complete geography carnival glass lots of silver ware GE electric heater wooden stand electric clock lots of Christmas decorations jewelry box slaw cutter cooking utensils Gettysburg souvenir mug cast iron frying pans Lesnely miniature toy steam engine gold trim candy dish 4 electric fans 1 on stand 1951 Penna law book ice cooler butcher knives wooden folding wheel chair 2 cast aluminum dutch ovens canner weaved picnic basket Speed Queen ironer

### GUNS — (approx. 1:30 P.M.)

Nice 5 hole Maple gun cabinet 1909 300 Savage rifle with 4 power scope & sling (Se 298271) L C Smith 16 ga double barrel shot gun (Se 197047) Ranger model 103 12 ga over & under shot gun (Se 11451) Elajopua 31 cal bolt action rifle (Se 25055) Japanese gun bayonet 2 full box of shells for 300 Savage 12 ga slugs gun carrying cases gun cleaning kits old US metal flask powder horn dated 1801 bone handle pocket knife silver Elgin pocket watch West Clock pocket watches U.S. war compass complete Woolrich hunting outfit turkey caller

### POWER TOOLS — HAND TOOLS — GARDEN TOOLS FARM TRACTOR — EQUIPMENT

1947 John Deere M tractor good running condition good tires with snow plow chains & pulley one owner plow & cultivator to fit same 3 section harrow 1 horse walking plow corn planter single & double tree Kohler gas engine generator 2500 watt O K rubber tire wheelbarrow basket & crates lawn sweeper lawn roller sm air compressor 32 double ladder step ladders stack of roof shingles table saw with 1 horse electric motor Black & Decker hedge trimmer sm Black & Decker drill press 2 7/4 skill saws hand saws hammers hatches levels carpenter planes wood drill bits tap & die set shovels hoes buck saws forks scythes wooden rake kerosene cans 2 vises wall paper trimmer lots of 6 stove pipe bolts nuts hardware of all kinds Plus hundreds of items too numerous to mention

AUCTIONEER NOTE: This is one of the finer kept property and personal belongings in Lewisberry. Everything in A-1 cond. Plenty of eats & parking.

Sale order tools, hardware & equipment first, dishes- real estate offered at 1 P.M. guns & furniture to follow.

Terms of sale: Cash or personal check if known  
Refreshments: by Ladies of Lewisberry Community Fire Co  
Not responsible for accidents.

**SAMUEL A. BORTNER:** Owner  
Joel O. Sechrist: Attorney

Little IKE Eichelberger Professional Auctioneer

Pa. Lic. # Au.001954-L Ph. Lewisberry 717-938-6322

Complete Auctioneering Service Now Booking Spring Sales  
Griffith & Stoner, Clerks Clip and Save