

Bedford Co. DHIA

(Continued from Page B19)

Starlan	4 5	3	19,673	920
Ronda	3 10	3	19,542	914
William H Helsel				
Nelda	6 5	3	21,837	917
Obie Snider				
Liz	8 3	3	26,267	922
Della	7 5	3	26,352	970
Linette	7 3	3	22,882	972
Prill	4 10	3	28,153	1146
Audie	3 4	3	23,721	929
John J Risser				
Brook21	6 8	3	23,632	972
K&D Farm				
Pepper	8 0	3	22,524	957
Jerry L Hershberger #92	5 6	3	21,722	804
Clarence&Ken Mowry #Cshmer	3 9	3	23,358	1004
Anna&Henry Hall				
Bun	9 0	3	19,235	828
Blair Brooke				
Ima	3 1	3	23,898	813
Three Spring Run Farm 582	3 5	3	16,258	817
Sunny Four Farm Inc				
Pixie	8 7	3	26,231	902
Trish	6 4	3	24,899	809
Germandale Farm				
Cora	5 6	3	21,610	806
Edward A Deputy				
118	6 7	3	25,419	874
41	5 9	3	19,917	821
131	3 8	3	23,691	819
141	2 3	3	25,421	806

Andy T Mohr	4 6	3	19,887	826
Maxie				
Robert Swartzwelder	7 1	3	23,818	834
120	3 4	3	25,338	902
103				
Ch&Ross Hershberger	7 10	3	20,552	872
Willa				
Paul&David Helsel	5 2	3	27,127	938
95	5 1	3	23,102	800
23				
Landon Henry	6 1	3	17,609	896
189				
Obie Snider	5 0	3	22,021	893
Pats				
Clarence&Ken Mowry	9 0	3	22,674	830
Cheokee	6 10	3	24,124	1016
Judy	5 10	3	27,054	975
Berna	4 6	3	29,013	1054
Corlee				
Raymond Hinich Jr	7 3	3	19,769	868
Jean				
Paul&Steve Ritchey	6 5	3	19,078	855
60				
Edward A Deputy	4 5	3	20,947	833
126	3 3	3	22,081	849
13				
Dale A Baker	9 8	3	22,793	992
Ginny				
Ronald M Dively	8 0	3	19,723	934
33				
Paul&David Helsel	8 10	3	23,731	937
29				

LUZERNE COUNTY DHIA

September 1984

Robert Hough	RH	54 5	87 8	18,110	691
Pecora Bros	R&GrH	160 6	87 9	18,622	687
Cows Finishing Their Lactation Period Over 750 Lbs					
Hillside Farms Inc					
346 8	RH	9 3	298	20,704	4 2 872
RJoyce23	RH	6 3	305	23,547	3 3 779
468 93	RH	5 10	305	21,836	4 3 945
Fred Shultz					
Sis	RH	5 6	305	20,261	3 9 799
Violet	RH	3 2	296	16,403	5 1 839
P Larock&Sons					
Lighten	RH	0 0	305	19,398	4 2 814
Maggie	RH	3 11	305	17,845	4 5 811
Wm Dagostin&Son					
112	RH	5 10	305	21,640	3 9 848
4442	RH	3 2	305	18,282	4 4 810
Pecora Bros					
1481524	RH	6 9	305	21,654	3 8 814
1121550	RH	5 11	305	23,130	3 5 802
50 1554	RH	5 10	305	23,586	3 7 869
56-1570	RH	5 6	305	19,499	4 3 838
72 1597	RH	4 10	305	25,972	3 4 888
1421679	RH	3 2	305	21,007	4 3 909
87 1666	RH	3 6	305	20,379	4 1 845
Carl E Troxell					
26	RH	4 3	300	18,651	4 6 864
Robert Hough					
Casey23	RH	3 7	286	19,772	3 9 771
Ann 44	RH	6 2	305	26,911	3 4 919
Abbey15	RH	3 2	305	23,330	3 6 848
Primrs8	RH	3 2	305	23,330	3 9 908

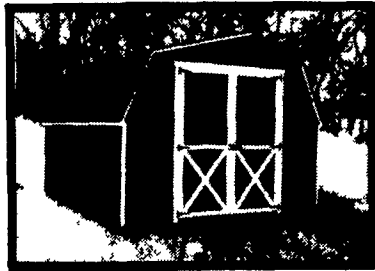
GLICK STRUCTURES

"QUALITY DESIGNED STORAGE BARN"

Ben Glick — R.D. 2, Gap, PA

717-442-9320

NO SUNDAY SALES



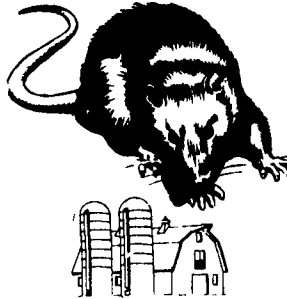
- BUILT TO ORDER
- STOCK & CUSTOM DESIGNS
- BUY DIRECT & SAVE
- FREE DELIVERY Within 20 Miles of Shop
- INSTANT INSTALLATION ON YOUR PREPARED SITE
- COMPLETE WITH FLOOR & PAINT

ALL SIZES FULLY ASSEMBLED

- 4x4 Pressure Treated Skids • 2x4 Floor Joist 16" On Center • 5/8 Plywood On Floor • Sidewall Studs 16" On Center • Covered With 1/2" Texture 1-11 • Plywood Siding • 240 lb. Shingles On Roof

★ OVERHEAD GARAGE DOORS AVAILABLE ★

ATTENTION FARMERS...
FREE ESTIMATES ON RODENT CONTROL



RODENTS carry diseases which can endanger the health of your poultry flocks. Your business is raising them. Ours is protecting them.

We Specialize In Sanitizing And Disinfecting Poultry Houses

Fhrlich

Since 1928

Pest control is too important to trust to anyone else

Lancaster, PA 397-3721

Lewistown, PA 248-0383

State College, PA 237-7607

LET Ag Tec HANDLE ALL YOUR SPRAYING NEEDS



give your vegetables wrap around protection

Featuring:

- 190 MPH Air Stream
- Rotating Head (3 Pt. Hitch or Pull-Type) Sprays With The Wind
- Low Volume Efficiency Reduces Chemical & Fuel Cost



SHORT ON CASH?

If So Consider Our 3 Yr. Leasing Program Available On Ag Tec Sprayers Only See Us For Details

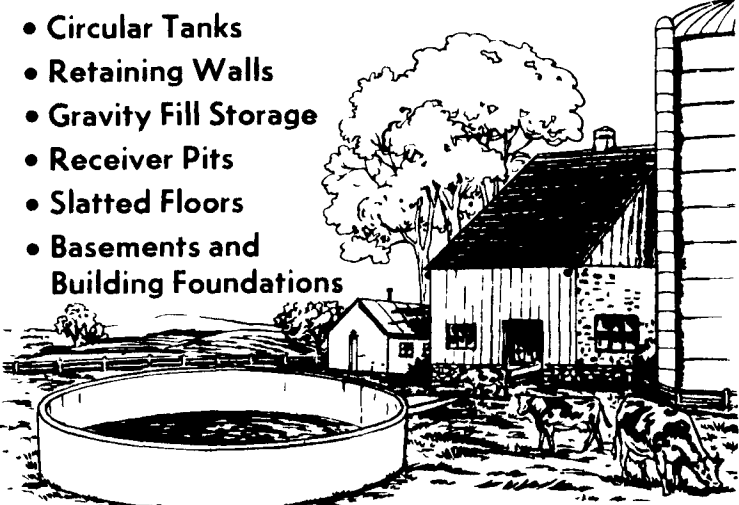
LESTER A. SINGER

Lancaster County's Only Dealer Specializing in Sprayer Sales & Service

RONKS, PA 717-687-6712 Mon.-Fri 8 to 5, Sat By App't

POURED REINFORCED CONCRETE CONSTRUCTION

- Circular Tanks
- Retaining Walls
- Gravity Fill Storage
- Receiver Pits
- Slatted Floors
- Basements and Building Foundations



SIZES & LAYOUTS TO YOUR SPECIFICATIONS

We are qualified to handle any poured concrete job you may need. We use a practical aluminum forming system to create concrete structures of maximum strength and durability. For a highly satisfactory job at an affordable price, get in touch with us

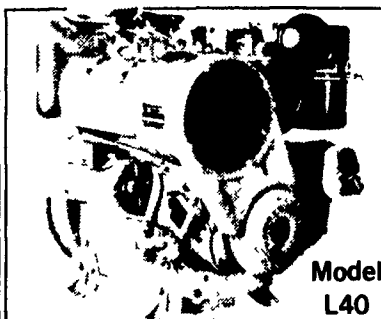
POURED FOR DURABILITY

Groffdale concrete walls, inc.

BRICK CHURCH RD LEOLA PA 17540

FOR SALES & LAYOUT CONTACT GROFFDALE POURED WALLS (717) 656-2016 JAKE KING (717) 656-7566

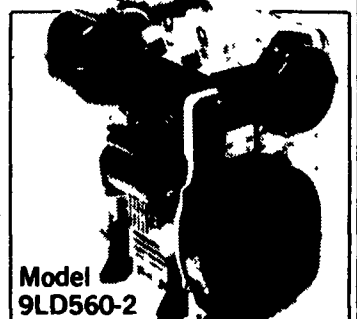
LOMBARDINI The Powerhouse



Model L40

We have the right size, weight, shape, price and engine available.

LOMBARDINI DIESEL USES 1/2 OR LESS FUEL THAN GAS ENGINES LESS DOWNTIME THAN GAS ENGINES 4 to 68 H.P.



Model 9LD560-2

For years Lombardini has been Europe's largest supplier of small, air-cooled diesel engines. Now, after several years in this country Lombardini is the fastest growing line of air-cooled diesels in North America. Lombardini specializes in small air-cooled diesels.

DIESELS OUR SPECIALTY CALL FOR USED DIESELS

- TAKE ADVANTAGE OF:
1. 12 month warranty or 2,000 hours
 2. Low fuel consumption
 3. Low maintenance
 4. Price per horsepower
 5. Easy starting
 6. 100% back-up with parts and service.

Let Us Know Your Service Problems 24 Hour Service-Check Our Prices

Distributor: **HOOVER DIESEL SERVICE**

PH: 717-656-3322 717-295-1729

2998 West Newport Rd., Ronks, Pa. 17572, 2 1/2 mile East of Leola Along 772

Authorized Dealers

Hoover Diesel Service
717-786-2173
RD 3, Box 91A
Quarryville, Pa 17566

Tim's Diesel Service
Star Rt Box 2
Rebersburg, Pa 16872

Beller Engine Service
Box 245D Pennsy Rd.
New Providence, Pa 17560

Sensenig Diesel Service
RD 3
Selingsgrove, Pa 17870

DEALERS INQUIRIES INVITED