



Virginia Auction Summary

December 13-19
Report supplied by VDA
Total of Va. Weekly Feeder Cattle Auction Receipts: 7,305.
Trend: Steady to \$2.00 higher.
South & Southwest Va.

December 13-19
Report supplied by VDA
STEERS: Medium 1 300-500 lbs. 55.00-66.00, 500-700 lbs. 55.00-65.50, 700-1000 lbs. 53.00-62.00. Large 1 300-500 lbs. 53.25-66.00, 500-700 lbs. 57.00-65.50, 700-1000 lbs. 58.00-62.00. Small 1 300-500 lbs. 50.00-62.00, 500-

Livestock market and auction news

700 lbs. 50.00-58.00, 700-1000 lbs. 57.75-58.00.
HEIFERS: Medium 1 300-500 lbs. 42.00-54.00, 500-700 lbs. 42.00-54.50, 700-900 lbs. 42.00-50.00. Large 1 300-500 lbs. 44.50-56.00, 500-700 lbs. 45.00-54.50, 700-900 lbs. 47.00-50.50. Small 1 300-500 lbs. 40.00-51.00, 500-700 lbs. 36.00-46.00.

Northern Va. Auction Summary
December 13-19
Report supplied by VDA
STEERS: Medium 1 300-500 lbs. 52.00-64.00, 500-700 lbs. 52.00-62.75, 700-1000 lbs. 51.00-62.00. Large 1 300-500 lbs. 50.00-62.00, 500-700 lbs. 55.00-64.00, 700-1000 lbs. 54.75-62.00. Small 1 300-500 lbs. 50.00-60.00, 500-

700 lbs. 48.00-59.00, 700-1000 lbs. 55.00-56.60.
HEIFERS: Medium 1 300-500 lbs. 41.00-50.50, 500-700 lbs. 40.00-52.00, 700-900 lbs. 40.00-52.75. Large 1 300-500 lbs. 43.00-52.00, 500-700 lbs. 46.00-53.00, 700-900 lbs. 35.00-48.50. Small 1 300-500 lbs. 38.00-46.00, 500-700 lbs. 32.00-45.50; 700-900 lbs. 42.00.

Shenandoah Valley Livestock

Harrisonburg, Va.
Saturday, December 15
Report supplied by auction
FEEDER CATTLE: Trend- All Classes Steady. Steers- M&L-1 300-500 lbs. 50.00-60.00, few 62.00, 500-700 lbs. 54.50-60.50, few 66.00; 700-1000 lbs. 51.00-57.50, Holstein 300-1000 34.50-43.50; S-1&M&L-2 300-500 lbs. 45.00-55.00, 500-700 lbs. 48.00-

57.00; 700-1000 lbs. 42.00-50.50.
Feeder Bulls- M&L-1 300-500 lbs. 48.00-58.00, 500-700 lbs. 48.00-54.50, 700-1000 lbs. 41.50-45.00; S-1&M&L-2 300-500 lbs. 39.50-48.00; 500-700 lbs. 41.00-45.00; 700-1000 lbs. 37.00-45.00. Heifers- M&L-1 300-500 lbs. 41.50-52.00, 500-700 lbs. 44.50-53.00, 700-800 lbs. 44.00-46.00. S-1&M&L-2 300-500 lbs. 40.50-47.00; 500-700 lbs. 37.50-43.00; 700-800 lbs. 37.00-41.00
STOCK COWS: Beef 360.00-380.00. Baby Calves 10.00-78.00, mostly 30.00-60.00
SLAUGHTER CATTLE: Steers-Good 2-3 54.25-57.00.
SLAUGHTER COWS: Trend 2.00 higher. Utility & Commercial 2-4 32.00-38.75, Canner & Cutters 1-3 25.00-30.75.
SLAUGHTER BULLS: 1&2 35.00-43.50.
LAMBS: Trend- steady. High Choice & Prime 63.50, Choice 61.50,

Feeder Lambs Choice 57.00-61.50, Slaughter Ewes 14.50-22.50.
HOGS: US 1-3 200-240 lbs. 51.00, Sows 1-3 35.00-42.50.

New Holland Dairy

New Holland Sales Stables
Wednesday, December 19
Report supplied by auction
Reported receipts of 128 cows, 36 heifers, and 10 bulls. Market stronger.
Load of 29 head, all stages, cows, 545.00-1475.00.
Load of PA Fresh cows, 835.00-1375.00.
Load of NY Purebred & Grades, fresh cows, 600.00-1475.00 springers 1050.00-1750.00.
Load of PA Fresh cows, 660.00-790.00.
Load of PA Fresh cows, 600.00-1025.00.
Load of PA Fresh cows, 925.00-1150.00.
Locally consigned cows 380.00-925.00.
Springing heifers 500.00-825.00.
Bulls 275.00-525.00.

Green Dragon Livestock Sales



Location: Ephrata RD 4. 1 mile N. on North State St., Ephrata.

COWS COWS COWS SALE EVERY FRIDAY

Lots of good Northern Feeder & Stockers. Slaughter Cows - Bull Steer, Veal-lamb.
11:00 A.M.-Beef Sale 200-300 each week.
1:00 P.M.-Dairy Sale.
7:00 P.M.-Small Animal Sale.

For Special Sales and Herd Dispersals on farm or at our barn or other market information call: Office 717-733-2444, Home 717-838-4318.

WALTER H. RISSER, Proprietor
All out of state and new buyers must have cash or certified check or current letter of credit from bank.

Seeking Profits In Commodities Trading?

- Hedging
- Speculating
- Managed Account

Call Forney Longenecker, Commodities Investment Executive, At (717) 295-8914
SHEARSON/AMERICAN EXPRESS, INC.
29 E. King St.
Lancaster, PA 17603

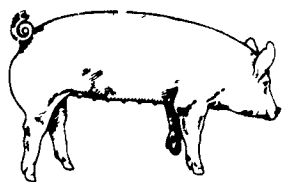


PEACE



ON EARTH

Joyous wishes for a holiday of love and laughter... with sincere thanks to all our good friends and patrons.



EMERY'S BUYING STATION

We Will Be Closed Christmas Day & New Year's Day

OPEN TO RECEIVE YOUR MARKET HOGS

AT THE GREEN DRAGON MARKET RD 4, EPHRATA, PA 17522 1 MILE NORTH OF EPHRATA ON NORTH STATE STREET.

HOURS: MONDAY, TUESDAY, and WEDNESDAY 6:00 A.M. to 11:30 A.M. 215-458-5677 Residence 717-733-9648 Office

YOU ARE PAID FOR YOUR HOGS IMMEDIATELY

Ken & Lois Emery, Proprietors

CRIPPLED AND DISABLED

Cows, Steers & Bulls For Slaughter Under USDA Inspection

Call Wayne Taylor 717-866-6289 215-286-9400

Lebanon, Lancaster, New Holland, Morgantown, Reading, Kutztown, to Myerstown.



Merry Christmas to All

May your holiday season be filled with all the expressions of joy that is Christmas.



GWALTNEY OF SMITHFIELD, LTD.

We will receive your market hogs

Mondays, Wednesdays, Thursdays & Fridays

NOTE OUR WINTER HOURS 7 A.M. to 1 P.M.

SPECIAL HOLIDAY HOURS

Open Christmas Eve Day & New Year's Eve Day 7 AM to 9 AM Only

Closed Christmas & New Year's Day Normal Hours Will Resume Jan. 2, '85

Located at the Vintage Sales Stables, Paradise, PA

You will be paid immediately. No commission or yard fees deducted. Reduced waiting time. Premium prices are paid for extra fancy hogs.

For information Call **Ed Herrmann or Charlie Kauffman 717-442-4742**



Be Wise . . . Check our prices before you buy!!

We will deliver in the Delmarva area.

SPRAY MATERIALS

- | | | |
|--------------------|-------------|------------|
| * ATRAZINE | * SUTAZINE | * PARAQUAT |
| * DUEL | * PROWL | * PRINCEP |
| * LASSO | * ROUND UP | * COUNTER |
| * BICEP | * BLADEX | * DYFONATE |
| * LASSO - ATRAZINE | * BANVEL | * FURADAN |
| | * LOROX | * THIMET |
| | * TOXEPHENE | * ETC. |

MELVIN R. WEAVER

2213 Leabrook Road, Lancaster, PA 17601
Ph: 717-569-6576 or 898-8354