

1 FARM EQUIPMENT

IH 4366, CAH, 1400 hours, 18.4x38, \$18,000 215-857-5048 evenings.

IH 440 3-16 Trip Plow, \$600 Also, Plow Packer for same. \$75 717-933-5442.

IH 826, cab & heat, 2800 hours, 16.9x38, dual hydraulic, dual PTO, \$6700, 215-857-5048 evenings.

Int. Combine 503 hydro, 13' flex platform and 6 row narrow corn head \$6,500. or reasonable offer. After 6 p.m. 215-489-0858.

International 856, dual hydraulics, original paint, excellent condition. 814-793-4293.

International 1468 tractor, excellent condition. \$12,500. 717-263-9577

Int. 140 with attachments. \$2500. 301-876-1956.

IRRIGATION PIPE: 4,000', 8"x30', 6" & 4" available. 717-532-9108.

Farmall Super A tractor with front mounted hydraulic lift snow plow. Very good condition, tires like new, new paint, \$1650 Near Pottstown, Pa 215-495-6135

Farmall 400 fast hitch NFE 3-16 plows, Int 4120 skid loader, 2 buckets, low hrs, 16 HP, Kohler 814, Huntingdon Co 814-669-4363.

Farmers & Dealers - Your advertising pays for itself when you advertise your equipment in the farm equipment section 717-394-3047 or 717-626-1164

Iron Age High Pressure Sprayer, 10 row booms, 400 gal. tank, \$435.00. Lackawanna Co., 717-587-2817.

JD A model tractor, electric start with hydraulic, fair condition. \$1,000. Negotiable. 304-289-3764 after 5 p.m.

JD H w... plow and cultivators, electric start, hydraulic lift. \$1,000 301-876-1956.

JD 1520 dsl. \$3,500 301-876-1956

JD 2020 Gas, high and low, spin out wheels. 814-793-4293.

IH 2000 front end loader with 17.5 gal per minute pump. No Bucket Fits B-414, B-275 IH tractors or could be adapted to fit other similar sizes \$1,500 negotiable 215-367-2933 days or 215-369-1418 evenings



Have a perfectly heavenly holiday! Many thanks.

ENFIELD EQUIPMENT INC.

Whiteford, MD 21160



- MF 285 8 Speed Satoh Buck 4WD w/Mower
- IH 154 Cub w/Mower AC WD
- Woods RM 306 Mower
- MF 725 7' Mower Conditioner
- IH 37 Baler w/Thrower
- IH 540 Manure Spreader
- IH Grain Drill
- Herd 3 pt. Fert Spreader
- MF 180 Tractor (2) 5' Rotary Cutters
- NH 270 Baler w/Thrower
- NH 271 Baler w/Thrower
- NH 450 Sycle Bar Mower
- IH 8 Crop Chopper
- AC Forage Harvester
- NH 16' Forage Box
- Gehl 65 Grinder Mixer
- NH L225 Skid Loader
- Brillion 24' Field Harrow
- MF 300 Combine
- MF 205 Combine
- Gehl 600 For. Harv. w/2 Heads
- Fox Blower
- MF 65 Trac., Gas
- MF 236 Loader
- Gehl 4500 Skid Loader w/Backhoe Attach.



May a joyous Noel be yours in every way

MARLIN SCHREFFLER
Pitman, PA
717-648-1120

SMITH'S IMPLEMENTS, INC.

Mercersburg, PA 717-328-2244

Merry Christmas & Best Wishes For A Prosperous New Year.



USED MACHINERY

Case 1570 Tractor, Cab, Dual Whls. Call For Price

Avail Waiver of Finance Till June 1, 1985

NH 1880 SP Forage Harvester w/2 Row Wide 3 Row Narrow Corn Head & Grass PU Head, New

Cat Eng. \$12,000

JD 7000 Cons. 6 R Planter w/Drg. Fert., Markers & Monitors \$10,000

Attach., Dry Fert., Markers Mon., Auger Fill \$6,900

IH B275 Dsl. Trac 3 Pt. Hitch .. \$2,700

JD 2510 Trac. Dsl., WF, PS ... \$5,300

JD 3960 Harvester w/Elec. Controls \$8,000

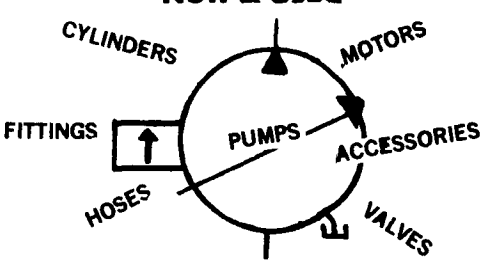
JD 800 Windrower w/12' head

JD 35 Harvester

JD 38 Harvester

Call about our selection of used balers, plows & planters.

HYDRAULICS
New & Used

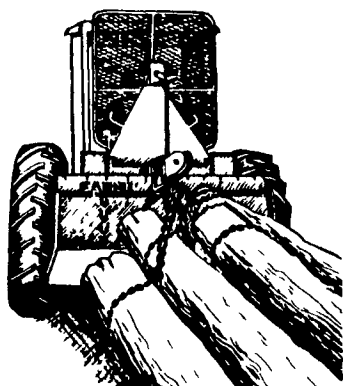


Inventory Reduction Sale
10% OFF
ALL STOCK
NOW THRU DEC. 31st

We Appreciate Your Goodwill & Friendship And Express Warmest Wishes To You & Your Family For A Wonderful Holiday Season, And A Happy New Year

Also We Are Changing Our Name To:
BEILER HYDRAULICS
(formerly Beiler Hydra-Matics Same Owner - Same Address)
Box 587, RD #3
New Holland, PA 17557
(717) 656-2846 (UPS Service)
P.S. Thank You! It Was A Pleasure Doing Business With You Again In 1984.

DRAG IN THE PROFITS!



Make your tractor a productive forest machine with a Farmi Logging Winch!

Your tractor and the Farmi winch is a low cost solution for winching in and skidding out your firewood, pulpwood and logs.

FARMI MODEL	LINE PULL	TRACTOR SIZE
JL250	5500 lbs.	18-30 HP
JL306	6600 lbs.	25-50 HP
JL456		
-JL50	10000 lbs.	50-140 HP
JL60	15000 lbs.	80 HP & Up

The winches fit any 3-point hitch. Several logs can be winched in at one time.

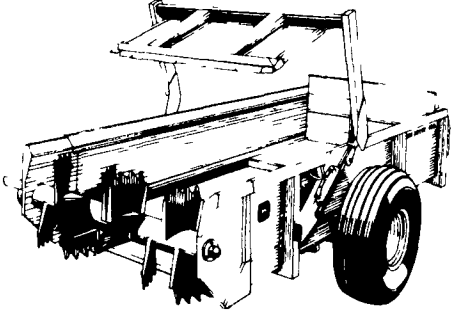
The cable is locked when the logs have been winched to the tractor. The 3-point hitch is raised to lift the logs off the ground when the logs are transported to the landing.

Farmi winches are sold and serviced by:

DONALD LAIDIG
6437 Ebenezer Rd.
Orrstown, Pa. 17244
Phone 717-532-4045

SPECIAL CHRISTMAS GREETINGS

AVOID SPREADER FREEZE-UPS



Self-cleaning design on John Deere's Hydra-Push™ spreader helps prevent winter freeze-up

Spreading manure during winter is no fun especially when the conveyor chain freezes down. Now John Deere's Hydra-Push spreader helps you avoid those freeze ups by using a unique hydraulic unloading system.

The 450 Hydra-Push Spreader with capacity of 217 cu ft or 225 bushels (heaped single beater) uses a hydraulic-powered moving panel to push and carry manure to the beaters. No more apron chains!

Spreader sides and floor are coated with a corrosion-proof material so manure tends not to stick or freeze to it. Productivity is increased because there is no time-consuming cleanout stage.

(1) Left In Inventory at '84 Prices!

The people at Oxford Greenline wish to take this opportunity to thank all their customers for their business in 1984 and wish them God's richest blessing thru 1985.

OXFORD GREENLINE, INC.

RD 1, Oxford, PA
215-932-2753 215-932-2754
Hours: 7:30 AM - 5:00 PM thru Fri
7:30 AM - 12:00 PM Sat



John Deere design, dependability and dealers make the difference



2900 Gal. Tank w/Easy Loader (Patent Pending)

NOW You can haul liquid Manure all day without getting off the Tractor Seat using the SLURRY BUGGY Easy Loader

- 1.) Back up to pit or lagoon. Lower easy loader (boom) from tractor (by hydraulic)
- 2.) Engage PTO. Switch pump to vacuum
- 3.) Float level indicator shows when tank is full
- 4.) Stop PTO. Raise boom and head for the field.
- 5.) In field. Switch pump to pressure. Start PTO. Open Valve and unload.

A liquid manure spreader that loads and unloads and has no chains, bearings, fans, augers, or moving parts that touch manure.

- ✓ Tanks are made of 5/16 thick metal
- ✓ Large air cooled vacuum pump (350 cfm @ 15 HG)
- ✓ Heavy duty walking beam axle
- ✓ Pump has not only a primary trap but also a large secondary moisture trap
- ✓ Pump has an air precleaner
- ✓ Manure is loaded through an 8 in. tube
- ✓ A 6 in. hydraulic operate brass valve for unloading
- ✓ Has 3 different manure spreading patterns
- ✓ Tank has a float level indicator and sight glass
- ✓ A 20 in. rear manhole for easy access to tank

Optional Features
• Heavy Duty Tool Bar With 4 Tooth Spring Loaded Injection
• 6 in Side Valve For Hose Hookup

Made in Lancaster Co., PA For More Information Call or Write

SLURRY BUGGY EQUIPMENT

RD 2 Box 148 717-859-3869 Ephrata, PA 17522