

# Ag export show set for April

HARRISBURG — Agricultural exports from a \$600 million industry that is an integral part of the state's economy. In order to encourage its growth, the Pennsylvania Department of Agriculture is sponsoring a pavilion at the 1985 National Food and Agricultural Exposition in Kansas City.

"More than 1,200 buyers from 78 countries purchased almost \$200 million in agricultural and food products at the first Expo held in Atlanta last year," according to

state Agriculture Secretary Penrose Hallowell. "Representatives from 27 Latin American countries constituted about 20 percent of the buyers at the show. More than one-third of the buyers came from Japan. Middle Eastern and European countries were also well represented."

"Our target is 550 United States exhibitors participating in this show designed exclusively for the export trade," Hallowell continued.

"Looking closer to home, in Pennsylvania we have space for 10 exhibitors in the Pennsylvania pavilion. Our group location is superb, adjacent to the information booth, telephone bank and concession stand," Hallowell said.

Hallowell said the Agriculture Department's export division has seven firms confirmed for the pavilion. "We are actively seeking other state exhibitors," he said.

According to Hallowell, there are several compelling reasons for foreign visitors and domestic exhibitors to take advantage of the Kansas City location. "First, this exposition is the biggest show of its kind scheduled in the United States next year," Hallowell said.

The show is designed exclusively for foreign buyers, Hallowell said, assuring foreign buyers of the exhibitors' complete attention and assistance. Various seminars are scheduled, and these seminars will be simultaneously translated into several languages.

Hallowell said the show is open to every conceivable type of food and beverage products. Promoters have made a special effort to attract exhibitors of seeds, nursery stock, flowers and forest products, including paper products related to the food industry, high value and value added food products.

"Agricultural exports are a viable way for Pennsylvania firms to expand sales," Hallowell said. "For example, our forestry and

lumber industry has grown dramatically the past two years, primarily due to a 60 percent growth in export sales. Pennsylvania now ranks fourth nationally in value of lumber products exported."

Kansas City is located in the heart of America's agricultural land. The city is easily accessible by international air carrier and is the headquarters of TWA and Eastern airlines.

Firms interested in participating in the 1985 show, set for April 22-24, 1985, should contact: Gretchen Vreeland, Pennsylvania Department of Agriculture, Export Division, 2301 N. Cameron Street, Harrisburg, PA 17110-9408; telephone (717) 783-8460.

## Check firewood for gypsy moths

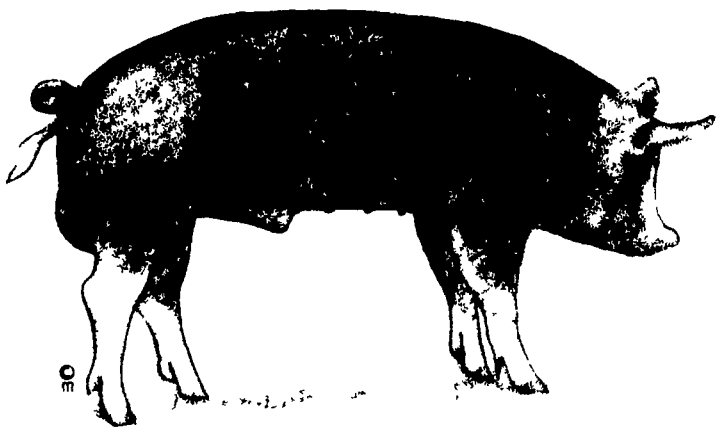
ANNAPOLIS, Md. — The Maryland Department of Agriculture is asking users of firewood to help stop the spread of gypsy moths by looking out for their egg masses on the wood they buy. The insect, which has defoliated hundreds of thousands of acres in the northeastern United States, has in recent years become a serious problem in Maryland.

Egg masses are velvety, buff colored mounds approximately 1½ inches in length that can be unwittingly transported in firewood. Dr. Douglas Kolodny-Hirsch of the MDA says that this is one of the most common ways of introducing gypsy moths into a community and once introduced, they are difficult to eradicate. He suggests a few ways for citizens to help in preventing further infestation.

If you're buying firewood, ask the seller to provide from the agriculture department in the state where the wood was cut a

certificate that certifies the wood free from gypsy moths. If the wood has been delivered and you plan to use it this winter, the eggs will be destroyed when the logs are burned. However, before the eggs hatch in mid-April, check the remaining wood and scrape off any egg masses with a putty knife, drop the egg masses into a paper bag and burn them completely. Other methods for destroying the eggs include burying them under several inches of well packed earth or soaking them overnight in rubbing alcohol, kerosene, gasoline or bleach. Keep in mind that eggs that simply fall to the ground are not killed and may still hatch.

The Maryland Department of Agriculture in conjunction with the US Department of Agriculture and the US Forest Service, is conducting a comprehensive effort to maintain the gypsy moth at a manageable level in the state.



**WHITE WASHING with DAIRY WHITE**

- DRIES WHITE
- DOES NOT RUB OFF EASILY
- NO WET FLOORS
- IS COMPATIBLE WITH DISINFECTANT & FLY SPRAYS
- WASHES OFF WINDOWS & PIPELINES EASILY

**BARN CLEANING SERVICE AVAILABLE WITH COMPRESSED AIR**

To have your barn cleaned with air it will clean off dust, cob webs & lots of old lime. This will keep your barn looking cleaner & whiter longer.

We will take work within 100 mile radius of Lancaster

**MAYNARD L. BEITZEL**  
Witmer, PA 17585 717-392-7227  
Barn Spraying Our Business, not a sideline.  
Spraying since 1961.

High Pressure Washing & Disinfecting Poultry Houses And Veal Pens

**FPPF**

**AUTO/TRUCK DIESEL TREATMENT**

AUTO/TRUCK DIESEL TREATMENT totally disperses water. It eliminates water even better than water separators. It also keeps injectors clean, improves engine efficiency, and contains no harmful alcohol. Use it in every tankful all year 'round. IT COSTS SO LITTLE TO PROTECT SO MUCH. Use Auto/Truck Polarized Flow Improver during the wintertime to prevent waxing and gelling.

**DIESEL FUEL INJECTION & TURBO CHARGER SPECIALIST**  
Master Warehouse Distributor

DIESEL TUNE-UP AVAILABLE Call for Appointment

**MILLER DIESEL INC.**  
6030 Jonestown Rd., Harrisburg, Pa 17112  
717-545-5931  
Interstate 81 Exit 26

REJOICE AT THE BIRTH OF THE PRINCE OF PEACE AND GIVE THANKS.

Our Thanks To All The Dairymen For The Patronage During 1984.

We Will Continue To Give Our Best Effort & Offer The Finest Service You Deserve For 1985.

We Wish You And Your Family A Joyous Christmas And A Happy New Year

**FISHER & THOMPSON ASSOC.**  
21 E. Woods Dr., Lititz, PA  
Amos Fisher & Rick Thompson

**MAGNUM 1st**

FROM DAIRYLAND SEED

THE 1984 PENNSYLVANIA FORAGE AND GRASSLAND -

**GRAND CHAMPION 10.2 TON P/A**

**SERVOS SEED CORP.**  
28 Ringfield Chadds Ford, PA 19317  
PH: (215) 388-6039

Available At Servos Seed Corp. Dealers Only