

## Dairy comments requested

WASHINGTON, D.C. — Comments will be accepted until Feb. 4 on U.S. Department of Agriculture proposed procedures for conducting referenda on the Dairy Research and Promotion order and proposed amendments to the order.

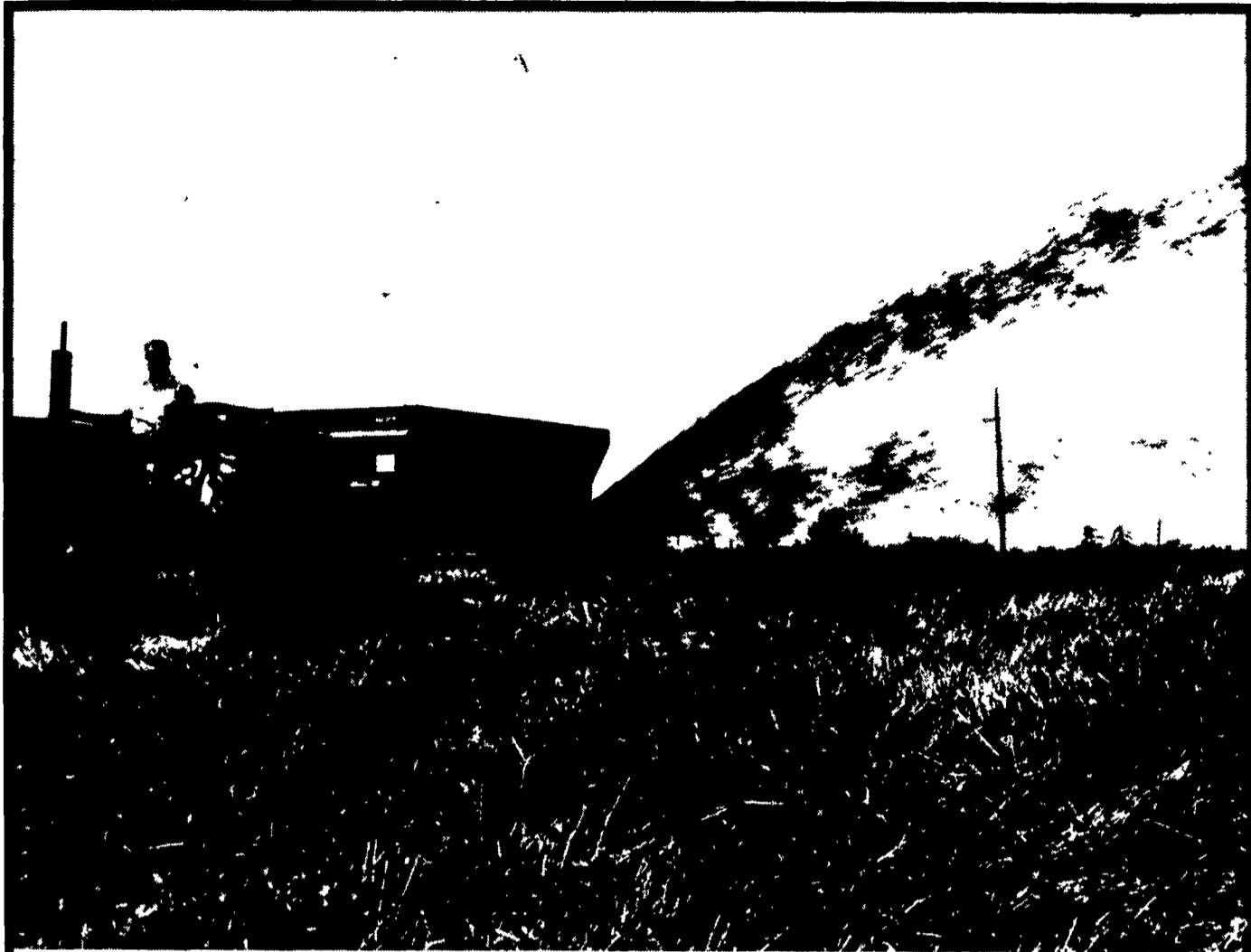
Edward T. Coughlin, dairy official with USDA's Agricultural Marketing Service, said that the action is in preparation for a referendum on continuation of the order that the secretary of agriculture is required to conduct within the 60-day period ending Sept. 30, 1985.

The research and promotion program, which was authorized in the Dairy and Tobacco Adjustment Act of 1983, is financed by a 15-cent per hundredweight assessment on all milk produced in the contiguous 48 states and marketed commercially by dairy farmers. The program is administered by a board of 36 dairy farmers appointed by the secretary of agriculture with representation based on area milk production.

Coughlin said the USDA proposals include procedures for conducting the initial referendum and any subsequent referenda. He said the proposed amendments would change the name of the order to make it consistent with the name of the board and make a change in board voting procedures.

The proposal is published in the Dec. 5 Federal Register. Comments should be sent to the Dairy Division, room 2968-S, AMS, USDA, Washington, D.C. 20250.

The Dec. 5 Federal Register is available for public review at County Agricultural Stabilization and Conservation Offices in PA.



# Put manure in its place.

Manure belongs in your fields Not on your driveway. Which means for efficient management you need to match your manure with your equipment.

If you're handling more and more semi-solid manure these days with inefficient machinery designed for the kinds of solids produced ten years ago, maybe it's time to re-examine your present means of spreading

Chances are you need a different kind of spreader. One specifically designed to handle high volumes of semi-solid manure. A spreader easy to load—even quicker to unload. The kind of reliable machine that churns out even, thorough spread patterns. And most important, one that doesn't cost you an arm and a leg.

### The simple solution—Vanguard

The Hedlund/Martin Vanguard is designed specifically to spread semi-solid manure. Vanguard's exclusive heavy-duty, chopper-type auger and oversized fan make short work of unloading. You can spread up to 1500 gallons in 2.5 minutes with uniform patterns of up to 50 feet. And because of Vanguard's rugged, simplified design, there are fewer moving parts—less maintenance for you.

### The economical solution

The best thing about Vanguard is its cost. For a little more than half the price of a comparably-sized conventional spreader with hydraulic endgate, you can own a Vanguard—

the durable machine that increases the efficiency of your entire manure handling operation

### See Vanguard on display today!

You'll find the Vanguard on display at your local Hedlund/Martin dealer. He's got the model that's sized and priced just right for your operation. For the name of your local dealer write Dept H-3, Hedlund/Martin, Inc., 841 Kutztown Road, Myerstown, PA 17067.



**Innovators in modern manure management**

**CALL YOUR MARTIN DEALER FOR DETAILS**

#### PENNSYLVANIA

Abraczinskas Farm Equipment Inc.  
Catawissa, PA  
717-356-2323

B & R Farm Equipment  
Beavertown, PA  
717-658-7024

Norman D. Clark & Son Inc.  
Honey Grove, PA  
717-734-3682

Clogston Implement  
Chambersburg, PA  
717-263-4103

Ditt's Farm Equipment  
Marion Center, PA  
412-286-9606

Thomas Dunlap  
Jersey Shore, PA  
717-398-1391

Dunkle & Grieb  
Center Hall, PA  
814-364-9109  
Mill Hall, PA  
717-726-3115

Evergreen Tractor Co.  
Lebanon, PA  
717-272-4641

H.R. Gutshall & Sons  
Carlisle, PA  
717-249-2313  
Loysville, PA  
717-789-4343

A.L. Herr & Bro.  
Quarryville, PA  
717-786-3521

Hess Farm Equipment, Inc.  
Canton, PA  
717-673-5143

Histand Farm & Home Service  
Rome, PA  
717-744-2371

William Hobensack's Sons  
1060 Greeley Ave.  
Ivyland, PA  
215-675-1610

R.S. Hollinger & Son  
Mountville, PA  
717-285-4538

C.B. Hooper & Son  
Intercourse, PA  
717-768-8231

Lone Maple Sales & Service Inc.  
New Alexander, PA  
412-668-7172

M & M Barn Sales  
Westfield, PA  
814-334-5504

Messick Farm Equip., Inc.  
Elizabethtown, PA  
717-367-1319

Red Wing Farm  
Fleetwood, PA  
215-944-0401

Tobias Equipment Co., Inc.  
Halifax, PA  
717-362-3132

W & J Dairy Sales  
Oxford, PA  
717-529-2569

Zimmerman Farm Service  
Bethel, PA  
717-933-4114

#### MARYLAND

H.B. Duvall  
Frederick, MD  
301-662-1125

Enfield Equipment, Inc.  
Whiteford, MD  
301-452-5252

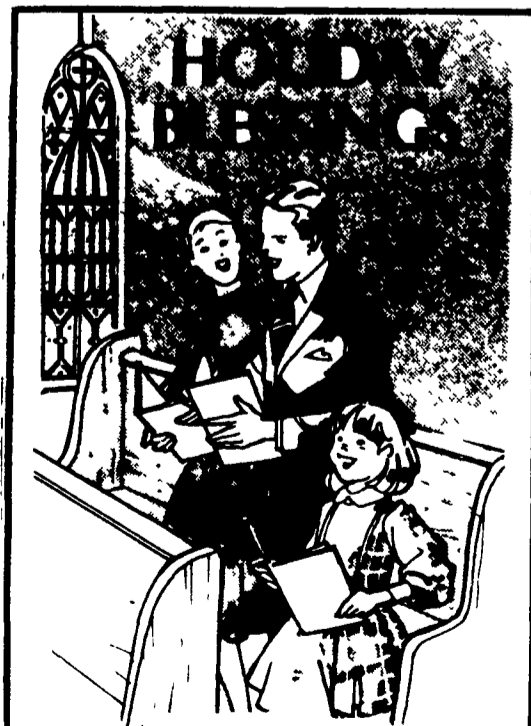
Farmer's Supply Co.  
Westminster, MD  
301-848-6776

#### DELAWARE

Delridge Supply, Inc.  
Greenwood, DE  
302-349-4327

#### NEW JERSEY

Jones Dairy Service  
Medford, NJ  
609-267-0198



May you share in the spirit of loving, giving and worshipping together. To all our friends ... many thanks for your kindness.

**QUALITY BUILDING SYSTEMS**

**MERVIN MILLER BUILDER**  
540 WEST 28th DIVISION HWY.  
LITITZ, PENNSYLVANIA 17543



*Season's Greetings*

