

Public Auction Register

SAT. JAN. 19 - 2 PM Public Auction of Valuable Souther Lanc., Co. Farmland, 54½ acres of land. DIRECTIONS: Take Rt 272 South of Lancaster to Truce, turn right onto Rawlinsville Road to town of Rawlinsville, turn left onto Drytown Road to Property on Right. Auction for James W. Hostetter & Mary Louise Hostetter. Randal V. Kline & Lloyd Kreider & Roy Good, Jr., Auctioneers.

GOING OUT-OF-BUSINESS

PUBLIC SALE OF DISPLAY RACKS, SHELVES, TABLES AND ANTIQUE STORE ITEMS WEDNESDAY, DEC. 26, 1984 AT 1 P.M.

Located at 40 East Main Street, Ephrata, Pa.

SANYO DIGITAL CASH REGISTER- (CALCULATOR - 5 DRAWER)

Victor Cash Register; LARGE OFFICE SAFE; Chestnut Church Bench; Wooden Stools; Oak Pressed Back Chairs; Oak File Cabinet; Antique Shoe X-ray Machine; Clothes Tree; Shoe Fitting Benches; Office Desk, Filing Cabinets; G.E. 18,000 BTU Air Conditioners; Sales Counters; Wooden Settees; Glass Shelving with adjustable Brackets; Metal Shelving; Glass-Enclosed Display Cases; Suit and Coat Racks; Shoe Racks & Bins; Display Gondolas; Shoe and Hat Display Racks; Wooden Hat Stretchers.

WOODEN, PLASTIC & WIRE HANGERS

4 Triple Dressing Mirrors.

SECTIONS OF 1x12 PINE STORAGE SHELVING

Shoe Sizers; EUREKA ½ h.p. Vacuum (Power Head)

WINDOW DISPLAY ITEMS

Shipping Crates Antique Mannequins; Antique Santas; Kerosene Lamp; Nazi Helmet; Merchandiser Grabbers; Old Posters and Signs.

ANTIQUA CHILDREN'S BOOKS

TERMS BY:

MITCHELL & RUTH

T. Glenn Horst, Auct.
859-1331 - AU000438L
Timothy G. Horst, Auct.
738-1245 - AU001767L

TUES. JAN. 22 - Public Consignment Auction in Kirkwood, PA. Lancaster County. Hay, Straw and Grain, Horses and Mules, Farm Machinery, small items, Tools, Groceries, Fruits and Vegetables and Dry Goods. For advertising arrangement, write today. King's Auction, R 1, Box 329, Kirkwood, PA. 17536.

SAT. JAN. 26 - 10 AM

Horse Sale. Keister's Middleburg Auction Located along Rt. 522 3 miles east of Middleburg, 5 miles west of Selinsgrove, PA

FEBRUARY

FRI. FEB. 1 - 10 AM Horse Sale. New Holland Sales Stables, Inc., Auctioneers

THURS. FEB. 7 - Public Auction of a Holstein Herd

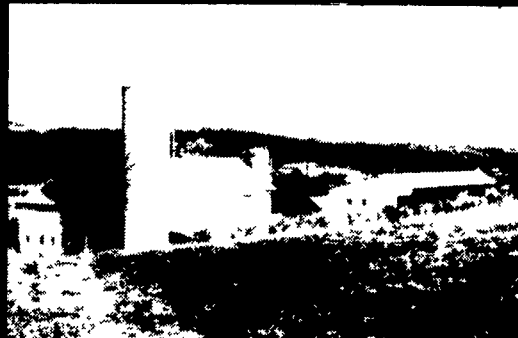
PUBLIC AUCTION

139 ACRE FARM FARM EQUIPMENT

WEDNESDAY, JAN. 9, 1985

Real Estate at 11:00 A.M.
Farm Equipment 10:00 A.M.

LOCATION: Take 11 & 15N. through Selinsgrove, Snyder Co., Pa. to 522 S. Take 522S. to 1st crossroads after Jct. 204. Turn right onto Salem Rd. go approx. 2 miles through Salem, Pa. to Fair Oak Rd. Turn left at Y, cross bridge to 1st blk. top road on left. Farm is on left. **WATCH for AUCTION SIGNS.**



REAL ESTATE consists of 139 acres +/- Total. 2½ story frame house, barn, silos, 114 acres tillable & wooded land on south side of blk. top road in Penn Twp. Balance of 25 acres +/- being on North & West side of Salem Road in Middle Creek Twp.

UNIT #1: Large FRAME HOUSE w/kitchen, livingroom, diningroom, 4 bedrooms, 2 full baths, 2 screened porches, 1 sun porch, summer kitchen w/laundry & utility room, attic, partial basement w/oil fired hot air heat and gas water heater. House in emaculate condition.

BANK BARN: 40' x 76' frame w/straw shed, & cow loafing area 40' x 76'; 500 gal. bulk milk tank and outbuildings.

16' x 60' Silomatic Silo w/Titan unloader built in 1976 and 10' x 37' concrete stave silo.

IMPLEMENT SHED: 40' x 148' w/steel roof & siding, 80' corn crib, 22' x 40' shop area; like new, built in 1980.

UNIT #2: 25 acres +/- tillable & wooded land w/16' existing right-a-way. These parcels will also be offered by the entirety as 139 acres +/- with buildings.

NOTE: REAL ESTATE will also be offered in Two UNITS.

UNIT #1: Buildings and 114 acres ideal for steer or dairy operation, in high cultivation w/alfalfa, corn, pasture, ever flowing stream, beautiful wood land, in a farming community w/a valley view setting. **UNIT #2:** 25 acres +/- land.

REAL ESTATE INSPECTION: By Appointment for house and farm buildings. Call AUCTIONEER at 717-569-2079 or Joe Zimmerman, Agent at 1-738-1458. Balance of farm may be seen anytime. All Buildings in Good to Excellent Condition. This is a well-kept property!

TERMS ON REAL ESTATE: 10% down day of sale and balance at settlement being 30 days after sale with cash or certified check.

FARM EQUIPMENT

Massey Ferguson 1100 Diesel Tractor w/2,744 hrs., New Holland #275 Baler and #56 hay rake, John Deere 1240 plateless corn planter, New Idea 323 corn picker, Fav-O-Rite grain bin wagon, 2 Kicker bale wagons, Lanco forage wagon w/new chassie, Trailer type 300 gal. sprayer. EQUIP. is in very good condition and will be sold at 10:00 SHARP; there are no small items for sale.

TERMS: Cash, certified check or established customer checks.

Auction By:
LEE D. AND MARY ANN HOSTETTER
Charles J. Ax, Atty.

Auction Conducted By
AMERICAN AUCTION SERVICE
Kenneth Welsh, Auct., Manheim, Pa.
Alfred G. Reist, Auct. AU-001637L
1050 Eden Rd.
Lanc. Pa. 17601
717-569-2079

FOOD AVAILABLE

and Horse Drawn Farm Machinery. Located 1½ miles NE of Oxford, Chester Co., PA. Daniel Riehl, Owner. Steve Petersheim, Auctioneer.

FRI. FEB. 8 - 9 AM Farm Equipment. New Holland Sales Stables, Inc., Auctioneers.

SAT. FEB. 9 - Farm Implements and Consignment Sale. Call 445-4452 to advertise consigned items. Located: Along Rt. 897 1 block South of Terre Hill behind Terre Hill Silo Co. block plant in East Earl Twp., Lanc. Co., PA. Ben Zimmerman & Son, Paul H. Zimmerman, Owners. LeRoy S. Horst, Auctioneer.

SAT. FEB. 9 - Public Sale of Farm Equip. and Household Goods. Located: 1 mile west of Octorara School, turn off Rt. 41 on Highland Rd. Terms by Melvin H. & Elizabeth Horst. Robert E. & Jeffrey R. Martin 717-656-7770. Frank L. Steller, Auctioneers.

SAT. FEB. 9 - 9 AM Public Auction of Dairy Cows, Farm Equip., Work Horses, and Driven Horses. LOCATED: 1 mi. East of Ronks, 1 mi. West of Gordonville along Irishtown Rd., 1 mi. North Rt. 30 off Soudersburg Rd. Elam B. & Marion Stoltzfus, Owners. Paul Snyder & Alvin Horning, Auctioneers.

THURS. FEB. 14 - Public Sale of Farm Equip., Livestock, & Household

Goods. Located 2 miles NW of Litzitz, turn west off of 501 on Newport Rd. second farm on left. Terms by Elam M. & Naomi G. Stoltzfus. Robert E. & Jeffrey R. Martin 717-656-7770 & Frank L. Steller, Auctioneers.

FRI. FEB. 15 - 11 AM Public Auction of Construction Equipment, Cars, Trucks, Loaders, Etc. Located in Felton Delaware. Carroll's Sales Co., Inc., Auctioneers.

FRI. FEB. 15 - 10 AM Horse Sale. New Holland Sales Stables, Inc., Auctioneers.

SAT. FEB. 16 - 10 AM Public Auction of Dairy Cows, Heifers, Mules and Farm Machinery. Located 2½ miles south of Strasburg along May Post Office Rd. or 4 miles North of 372 from Quarryville along May Post Office Rd. Lancaster Co., PA. Amos S. & Mary S. Zook, Owners. Kreider & Kline Auction Service, Auctioneers.

SAT. FEB. 16 - Farm Equipment, Hay and Straw. Located: 1 mile West of Blueball off Rt. 322. John Aaron Zimmerman, Owner. Nexin Martin and Lewis Groff, Auctioneers.

SAT. FEB. 16 - Complete Dispersal of Farm Machinery: 9 tractors 50-200 HP, 4 WD, Chisel Plows, Transport Discs, 14'-24' Large Cultimulchers, Large Grain Drills & Corn

Planters, Harvesting Equip. 3 large pieces, Grain Trucks Big & Medium Sized Eq. & Misc. Items. LOCATED: 2½ miles south of Coatesville intersection of Rt. 80 and Strasburg Rd. Leonard Strunk, Owner. Blaine Rentzel, Auctioneer.

SAT. FEB. 16 - Tack 9:30 AM, Horses 11 AM. Special Horse Sale, work horses, mules, drivers, etc. At the Belleville Livestock Mkt., Belleville, PA. 717-935-2146.

SAT. FEB. 16 - 10 AM Public Sale of Real Estate, Household Goods, Etc. Located: 291 Newport Rd., Leola, PA. Monterey. Terms by Henry R. & Susie S. Stoltzfus. Steller & Martin's Auctioneers.

FRI. FEB. 22 - 9 AM Holstein Dairy Cows, Horses & Mules, Farm Eq., Household Goods. Located: 4½ mi., South of Quarryville at intersection of RT. 472 & Noble Rd., Lanc. Co., PA. Isreal S. Stoltzfus, Owner. Diefenbach's Auctioneers.

SAT. FEB. 23 - 10 AM Horse Sale. Keister's Middleburg Auction. Located along Rt. 522 3 miles east of Middleburg, 5 miles west of Selinsgrove, PA.

SAT. FEB. 23 - Public Sale of Farm Equip. and Household Goods. Location: 1 mile north of Rt. 283, Rheems, PA. Exit Sale by Paul G. Ruhl Estate. Raymond Miller and Rufus Geib, Auctioneers.

EDWARD C. SWANSON COMPLETE FARM DISPERSAL

WEDNESDAY, JANUARY 2, 1984
(BLIZZARD DATE TUES., JAN. 8)

10:30 A.M.

MOUNT MORRIS, (LIVINGSTON CO.) NEW YORK

Sale to be held at the farm 6914 Begole Road at the corner of Swanson Road. Follow auction signs from Rte. 36 at Peters Motel, just south of the Village of Mt. Morris.

Retiring from farming after 5 generations, selling without reserve, the following:

50 Interstate Tested, Homeraised Holsteins (Over 35 Years of Eastern Breeding)

25 mature cows sell, (13 fresh last 90 days, 2 due Feb.); 3 bred heifers (2 due Jan. other Feb.); 14 open yearlings; 1 yearling whiteface beef heifer; 7 calves to 8 mo. old. Inoculated against shipping fever, pregnancy examined. Trucking arranged!

Excellent line-up of well maintained machinery:

1977 J.D. 6600 Hydro., 4-wheel drive, diesel combine, 2008 hrs.; J.D. 443 narrow 4-row corn head; J.D. 14 ft. hume reel grain platform; 1976 I.H. 1066 "Black Stripe" tractor, 2877 hrs., air and heated cab, 20.8-38 radial tires; 1971 I.H. 656 Hydro., diesel, (Row Crop), 3833 hrs.; I.H. 2250 quick attach loader with 3 buckets; 1968 J.D. 4020 diesel with canopy top; Oliver Super 88 wide front, live hyd. and p.t.o.; Farmall "M" narrow front with live hyd.; Farmall "H" narrow front; 1980 Chevy. K-10 4WD pick-up, 35,000 miles, with Myers plow; 1980 Chevy. C-10 pick-up, 63,000 miles, loaded; 1969 Chevy. C-50 with hoist and 12 ft. grain body; 1965 Chevy. C-60 with hoist and 14½ ft. grain body; (both farm trucks 292, 6 cyl. engine, 4 sp. trans., 2 sp. axle); I.H. 720 5-18 spring reset plow with spring coulters and power slide hitch; Brillion 15 ft. cultimulcher; Brady 822 12 tooth chisel plow; Pittsburg 15 ft. transport disk; J.D. 350 12 ft. transport heavy disk; Brillion 16 ft. wing type field harrow; J.D. R640 6-row cultivator; J.D. 7000 6-row corn planter with liquid fert. set-up; I.H. 10 18-7 grain drill with dry fert. and grass seeder; GT-370 lp. gas grain dryer; squirrel cage cleaner; Hutchinson and Allied 42 ft. by 6 in. transport augers; 9 ft. by 6 in. auger; 3 grain bins (2 app. 18 ft. by 18 ft. and other app. 23 by 15); grain aerator; Turnco gravity wagon; Calhoun 4-ton tandem axle fert. spreader; 1000 gal. steel fert. tank with pump and motor on tandem axle trailer; N.H. 513 and 512 spreaders; I.H. 430 baler with ejector; N.H. 479 haybine; N.H. 256 rubber mount tooth rake; Lamco 18' by 8 and Bale King 15 by 8 steel side kicker racks on gear; N.H. 48 ft. bale or grain transport elevator; Stone 32 ft. bale elevator; 2 running gears; N.H. 770 chopper; 770 2-row narrow corn head; 770W hay pick-up head; Gehl and Papec 2 beater s.u. wagons; King Wide long table blower; Kosch side mount mower; 500 gal. water tank; set 18.4-38 in. snap on duals; set 38 in. double ring chains; 10 I.H. suite case weights; set 13-38 snap on duals; Hydraulic cylinders; Zero 500 gal. bulk tank with 3 h.p. compressor; Zero 1½" s.s. pipeline milker system with compressors and 4 miler units; Clay gutter cleaner with app. 150 ft. of year old chain; steel livestock gates; etc.!

Some top cattle, dairy equipment and a good long line of desirable farm machinery, make this a sale for every serious farmer. See you January 2nd! Prior inspection invited!

Terms: Cash or good check sale day! I.D. required! Nothing to be removed until settled for.

Cattle under tent. Lunch available. Trucking arranged.

Owned by **EDWARD C. SWANSON** 716-658-4191
Auction conducted by **PIRRUNG AUCTIONEERS, INC.**
Wayland, New York 716-728-2520

ANNUAL PUBLIC SALE

From Interstate 81 South of Martinsburg, WV, Take Exit #5 (Inwood) WV, Route 51 East approximately 3½ miles to Shutt's Cash Grocery (Formerly Haines') Turn right - .2 of a mile to sale. OR From Charles Town, WV, Take route 51 West. Go approximately 8½ miles to Shutt's Cash Grocery Turn left - .2 of a mile to sale.

SATURDAY, DEC. 29, 1984
AT 9:00 A.M.

TRACTORS AND EQUIPMENT: Approximately 20-25 tractors including Cubs, Fords, John Deere, Internationals, Fergusons, and other tractors. We will also be offering a good selection of plows, cultivators, wagons, new and used rotary cutters, 6 and 7 ft. blades, post hole diggers, discs, wood saws, rakes, balers, round balers, grain elevators, corn pickers, and other farm relating articles.

TRUCKS: 1968 GMC, 238, 5 spd., single axle; 1973 Int., 290, 10 spd., full screw; 1979 GMC 430 Detroit, 13 spd., full screw.

We will also be offering a good selection of NEW AND USED TOOLS - Canned goods, hams and other food items - Some household articles.

TERMS: Cash or Good Check. Nothing to be removed until settled for. ID required to acquire bidding number.

Edgar A. Bohrer, Sale Mgr.
WV Lic. #18-85
304-229-8354

NOTE: This is a consignment sale. Let us turn your unused farm articles, household articles, and antiques into cash for you. If you are considering having an auction, please contact us. We would be pleased to serve your needs.

ORDER OF SALE: Small items - tools; household articles, food, etc. will be offered promptly at 9 a.m. Tractors and Equipment will be offered promptly at 1 p.m.

Not Responsible For Accidents on Premises
Lunch Rights Reserved