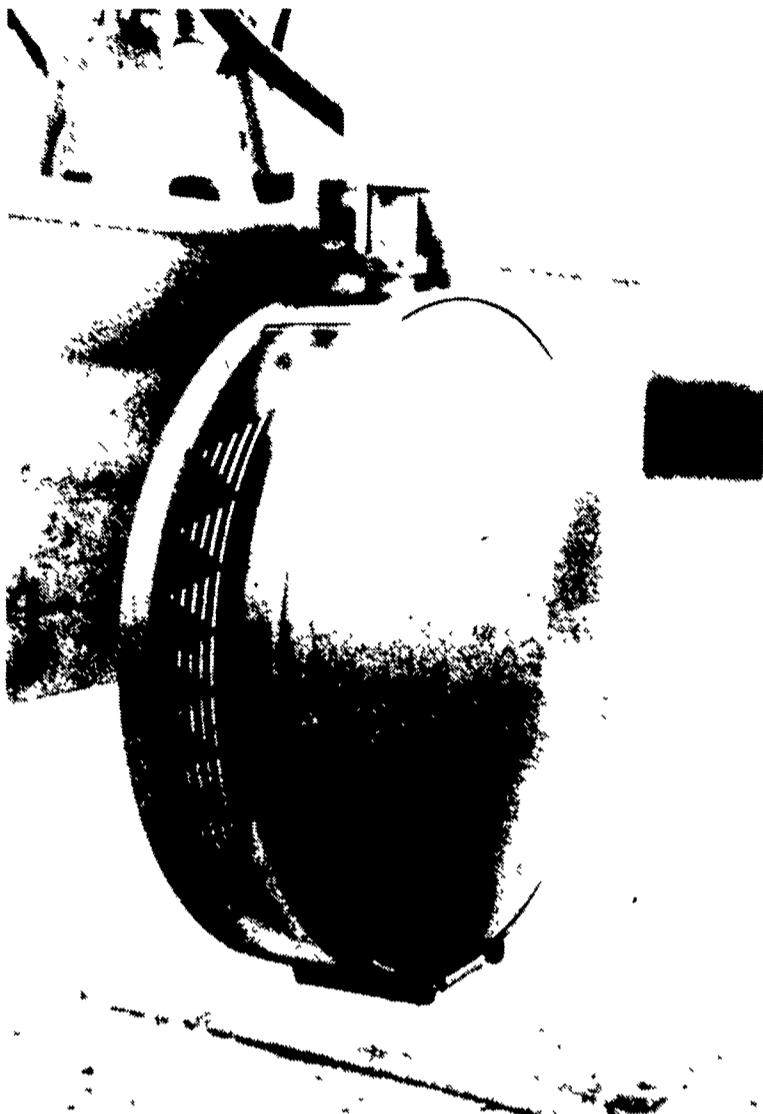


BUSINESS NEWS...

New weigh container



Measure milk without any movement parts or electronics. Germania introduces a revolutionary stainless weigh container that holds all the milk and can take weights manually or automatically into a computer. The 85 lb. capacity container cleans in place and has excellent vacuum stability.

ABS offers beef sire data

DE FOREST, Wisc. — "At ABS we choose our sire lineup for the important characteristics that add value and productivity to your herd," states Keith Vander Velde, Beef Programs Manager.

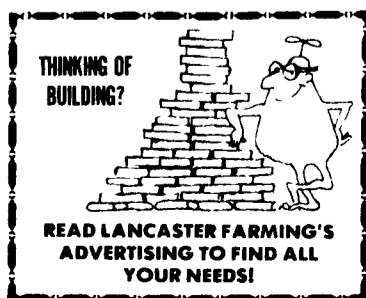
"This year our 1985 Beef Sire Directory reflects this emphasis in the wide selection of bulls and breeds we offer. The 48-page, full-color catalog features 76 sires in 19 breeds. It highlights such great sires as '7777', the Horned Hereford breed's youngest Total Performance sire; Mr. Angus, the breed's most popular bull for sire performance and show winners; and Doubletime, the Simmental sire unequalled in performance in the 1984 ASA Sire Summary," Vander Velde says.

Also appearing in this catalog are some exciting new sires like Baldrige Oscar, the newest addition to ABS' proven Angus sire lineup. As a top-ranked sire for weaning and yearling weight EPD, Oscar has created new excitement in the Angus breed. Another exciting young bull in the directory is



Defender, a modern looking length and frame Angus with an impressive show-winning pedigree.

To get a free copy of ABS' 1985 Beef Sire Directory, contact your local ABS Representative or American Breeders Service, P.O. Box 459, DeForest, WI 53532, (608) 846-3721



GVM, Inc. holds open house

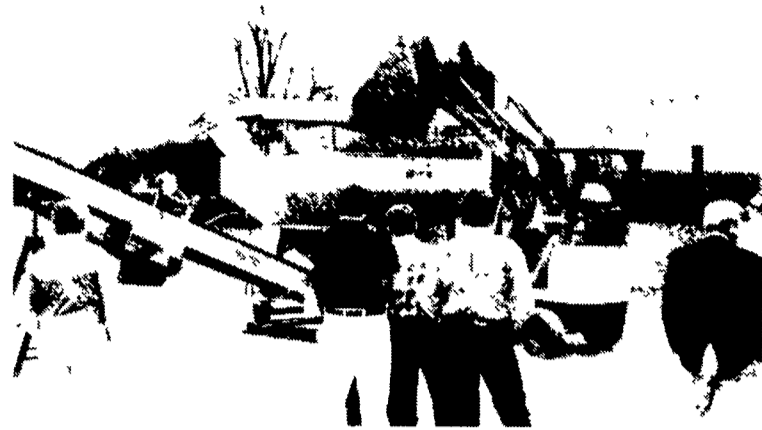
BIGLERVILLE - On a recent blustery fall day, GVM Inc., located in Biglerville, held its first Open House. Over 100 fertilizer dealers, representing New York, New Jersey, Maryland, Delaware, Pennsylvania, Virginia and West Virginia, attended.

Tours of the manufacturing facilities, display rooms, and warehouses, along with a brief history of GVM, began in the morning.

GVM Inc. was incorporated in 1977, when the president and owner, Jack Anderson, began to see a need for more precision in custom application equipment. He developed the first GVM product—the GVM Foam Marker—and began distributing it throughout the United States.

As the owner of Andgrow Fertilizer (a sister company of GVM), his expertise in the fertilizer industry, coupled with his experience in the farm industry, allowed Anderson to develop other monitoring devices for custom operators. As GVM grew it became a distributor of an entire line of fertilizer equipment and parts. Layco blenders, Norwesco tanks, Mobility spreaders, tenders and loaders and John Blue equipment top the list of products offered.

The morning ended with field



Visitors to open house of GVM, Inc., Biglerville, watch demonstration of Mobility Dipper III and the Layco Blender.

demonstrations of GVM's newest pieces of equipment—the GVM Turbo Floater and the Double Duty Lime and Fertilizer Spreader. Plenty of home cooked food was served for lunch and later dealers had the chance to have any questions answered by any one of the many factory representatives present.

At the end of the day, GVM owner, Jack Anderson, demon-

strating one of his newest devices—the Total Gallon Meter. This price competitive meter can be used to count total gallons or preset to automatically shut-off when the desired amount of gallons, or quarts is reached.

Ideas were exchanged, equipment was viewed and purchased, and the day was termed a success by the dealers and the staff at GVM Inc.

Fertilizer head calls for ag policy changes

KANSAS CITY, MO. — "Never again, in a world where millions continue to starve, should America's farmers feel forced to curtail or quit their job of producing food," said Gary D. Myers, president, The Fertilizer Institute, recently during Farmland Industries' annual meeting.

The pending debate that will create the new 1985 Farm Bill presents to opportunity to fashion a market-oriented policy for U.S. agriculture—one that will release this essential sector from 1930s-based government acreage controls, and eliminate the need for costly programs, such as 1983's Payment-In-Kind, the industry leader said.

The year of PIK, he said, made the fertilizer industry painfully aware of how important farm policy is to all of agriculture. Fertilizer, and other input industries, saw the worst business decline in history with one-third of

its production shut down, he added.

"That's why farm programs of the 1980s and '90s must respond to the realities of a new agricultural structure. That's why new ideas must be advanced to help agriculture move away from boom-and-bust cycles. And, that's why productive development of export markets for U.S. farm products must be aggressively pursued by the U.S.," Myers urged.

One such aggressive technique, he said, is to include a volume bonus plan for buyers of U.S. farm products. "In short," he explained, "the amount of farmer-held grain reserve would be capped, and when that level was reached, America's loyal customers would be awarded added grain as a bonus for their contract purchases. Supply would be held in check, customers would have new faith in the U.S. as a reliable supplier, and America's farmers would not be

penalized for their efficiency and productivity."

In addition to a call for involvement in the Farm Bill debate, Myers also urged that farmers and agri-business be more involved in demanding a reduction of the federal deficit. High deficit levels have fueled a high reduction of the federal deficit. High deficit levels have fueled high interest rates and government competition for borrowed capital, he said. This combination, he added, has led to costly farm credit and, at the same time, has eroded U.S. farm export markets by fostering a high dollar value overseas.

Only through public concern, relayed to Congress, can policies surface to reduce agriculture's problems, Myers continued. "We can only blame ourselves if our elected representatives fail to achieve sound agricultural and fiscal policies.

Krause introduces disc harrows

HUTCHINSON, Kan. — A series of medium-duty disc harrows in working widths of 27 to 33 feet has been introduced by Krause Plow Corporation. "The new 4950 Series features improved depth gauging and stronger construction than the existing Series it replaces," according to F.J. Barkman, Advertising & Sales Promotion Manager.

A unique new wheel linkage system reduces field gouging. The wheel arrangement allows the center wheels to move backward into field position as the wing wheels move forward, providing more uniform depth gauging of the front wing gangs. When the gangs are raised for turns, the center wheels and wing wheels move back into line to provide a short turning radius and reduce side loading on the tires.

Three-section flexibility allows over-center wing folding for a roading width of 16'. A new hydraulic, self-leveling hitch arrangement actuates faster, and is longer for better maneuverability and tighter turns. The cylinder has been moved toward the rear of the hitch to eliminate interference with tractor three-point arms.

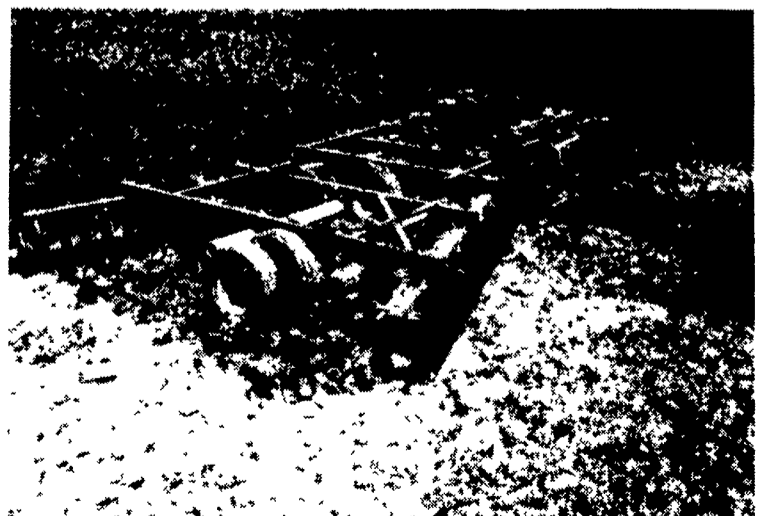
Gangs are bolted under the new drop frame of the 4950 Series for more strength and wear bushings in the wing hinge increase wear

life. Weighted front gang beams along with other weight adjustments make the 4950 weigh over 400# per foot of cut. Disc blades are available in 22" or 24" diameter mounted on large 1-1/2" diameter alloy tie rods. The unique SuperSeal™ positive regreasable bearings are standard equipment and are encased in rubber to reduce shock loads.

A new simplified field-depth adjustment is operated by turning a crank at the front of the unit to set the depth for both center and wing sections. This linkage is tied to the large six-inch diameter

center rocker shafts. Options include a three-row tine harrow with rugged coil tines of spring steel. The pitch of the tine bar assembly and the working angle of the tines are easily adjustable.

An optional rear trail hitch allows easy hook-up of trailing equipment to accomplish more operations in a single pass. For more details regarding the new 4950 Series or other Krause implements, please contact F.J. Barkman, Krause Plow Corporation, P.O. Box 2707, Hutchinson, KS 67504-2707



A medium-duty disc harrow series has been introduced by Krause Plow Corporation.