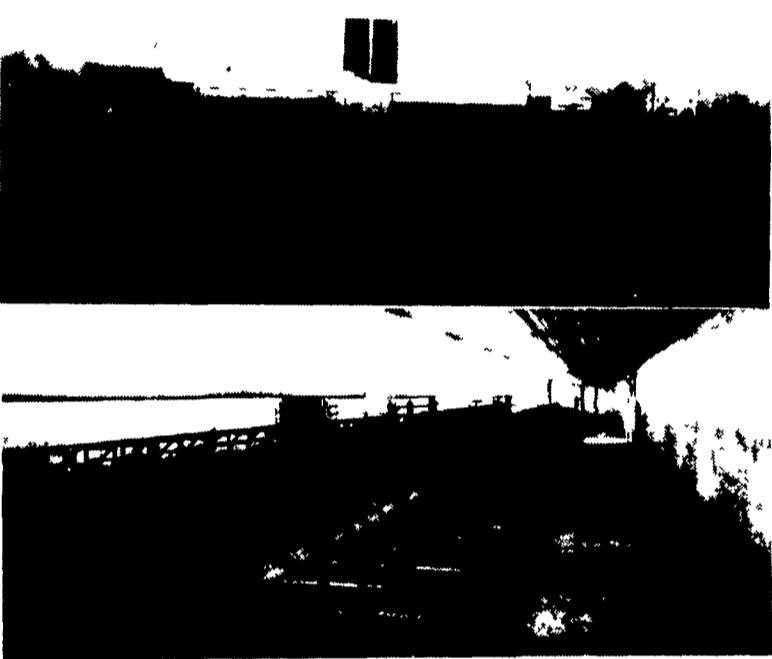


For Sale -
 2 adjoining farms, very productive soil, spring-fed water supply. Two good sets of buildings. Large brick house circa 1800, easily accessible from Rt. 83. Will finance 70%. Possible trade on good house, barn and few acres. John Strawbridge, Stewartstown, 301-966-2022

COMMERCIAL PROPERTY
 2 apartments, coffee shop not complete. Licensed beauty shop operating. 2.2 acres on Rt. 6. New roof, new septic tank & separate utilities. Lots of Parking.
 Call John
 717-945-3723

PRICES REDUCED ON SOUTH MINNESOTA LAND
 High Quality Farms in Mower Co. and surrounding area. All sizes, Livestock or Grain. Some Contracts. Call or write for details.
NORB HAMILTON REALTY
 Elkton, MN
 507-584-6834

OWNER SAYS "SELL IT"
 Beautiful Dairy, 286 acres of Hagerstown soil w/approx. 260 T.A. This farm has 3 large one story barns side by side. The newest barn was used only six months; it has 130 tie stalls w/the heads together, overhead doors on each end to enter for feeding w/total mix wagon. There is a Boumatic double six parlor w/auto. take offs & computerized prod. records - 2000 gal. Bulk tank - fre-heat & Bath Room. 300,000 gal. Slurry Store & 2-25x80 blue silos. #2 bldg. has free stalls in it & #3 bldg. is a round roof bldg. perfect for equip. storage. There is also a very large garage & equip work shop. House w/new bldgs. is a frame bldg. comp. renovated w/elec. heat new kitchen & laundry & swimming pool.
 Another set of farm bldgs. w/brick house & large L shaped Bank Barn. Also silo, corn barn & heifer barn. There is an existing mtg. which can be assumed.
 This is a very nice operation in a very prestigious farm community. Please don't call unless you want a very unique opportunity for a large operation at a very good price.



TWO NEWLY LISTED FARMS
 Northern Lancaster County -
 Farmer or Developer



Zoned R-1 Prime Location. Presently a productive operating Dairy farm, nestled by the creek and covered bridge. Includes a family size brick home, equipment sheds, silos, large barn, etc. A friendly atmosphere will truly greet those looking for the Homestead to settle. Whoa there, Pull the reins! Seller even will cooperate with financing

Lebanon County Executive (Horse) Farm



Tranquil Seven (7) Acre Lake. Only minutes from Lebanon/Myerstown area. Acres of fertile level to slight grade soil. Two family totally remodeled masterfully brick farm home. Brick and frame large bank barn. Financing Available. This setting is truly unsurpassed

SHEETZ REAL ESTATE
RAY N. WILEY INC.
 323 W. Main St.
 Mount Joy, PA
CALL 653-1481
FARM LISTINGS NEEDED
 Farm Salesman - Eugene Kreider

WIMPLE REAL ESTATE
STATEWIDE FARMS
MOHAWK VALLEY
MILKING FACILITIES FOR 96 on this productive 300 acre farm with 285 tillable. All large farms in this area. Barn has 96 stalls plus large heifer facilities, pipeline, 16x40 concrete silo w/ Jamesway unloader, 20x80 Harvestore w/auto feeder. Several other barns. Good brick home plus tenant house and mobile home. INCLUDES: 89 milkers, 90 heifers, 4 tractors and very, very long line of machinery. JUST LISTED! \$375,000 or will divide. CALL WIMPLE'S SLOANSVILLE OFFICE 518-875-6355

SOUTHERN JEFFERSON COUNTY
THIS DAIRYMAN WANTS TO RETIRE NOW!!!
 Farmer puts a bare-bones price for a quick sale. Farm has 240 acres good alfalfa and corn land in pretty farming area. Mostly open. Very good 44 tie barn has cleaner, 14x50 unloading silo, bulk tank. The ranch home is only 4 years old and large basement suitable for more living area. INCLUDES: 35 milkers, 3 tractors and complete line of hay and corn equipment. JUST LISTED! \$125,000. CALL WIMPLE'S GOUVERNEUR OFFICE: 315-287-4163

COBLESKILL AREA
PICTUREBOOK FARMSTEAD: 160 acres on this farm and owner sells feed. Excellent barn for high-priced herd has 42 large ties on 2" surge pipeline, Patz cleaner, 2 silos. Very nice 4 bedroom ranch home with attached garage. INCLUDES: 40 milkers, 20 heifers, nice line of machinery for \$187,000. JUST LISTED! CALL WIMPLE'S SLOANSVILLE OFFICE: 518-875-6355
 - FREE DAIRY CATALOGUES -

FARM & HOME REAL ESTATE
 Smoketown, PA 717-291-2270

Sylvester Baum Carlisle 717-776-3967	Harlan Keener Willow Street 717-464-2669	Mehlon Oberholtzer Lancaster 717-392-1177
--	--	---

Broker - J. Irvin Denlinger
717-898-8962

Century 21
Hoffer & Assoc.
 9 West Main St.
 Ephrata, PA 17522

SELLING?
 LIST IT WITH US
 Listed by:
Paul K. Landis
 Auctioneer/Realtor
 Assoc.
 Farm & Country rep.
 Home 717-854-8483
 Office 717-798-4261



BERKS COUNTY
 111 acres, 85 t., general farm, features 2 1/2 story double stone home. Set back from road, 12 rooms, 2 baths. Lg. bank barn, wagon sheds and much more. Boyertown area. \$280,000.

76 Acres General Farm - 2 1/2 story brick farmhouse, needs work, 2 story bank barn, double corn crib, large stream, private setting, \$150,000

MONTGOMERY COUNTY
 82 acres, 65 till., balance woodland & pasture w/stream, general farm, 2 1/2 story 5 bedrm. house w/LR, DR, Kitchen & bath, bank barn & other buildings. \$250,000 - \$235,000

60 acre general farm, Boyertown area, lovely new 4 bedroom colonial w/large eat in kitchen, living room, dining room, sunken recreation room, den & 2 1/2 baths and a private setting, \$265,000

JUNIATA COUNTY
 58 acre, open and wooded, 2 story brick home, kitchen, living rm., dining rm. & bath, and 3 bedrooms, stable and corncrib, good hunting-fishing area, \$68,000.

SCHUYLKILL COUNTY
 234 acre woodland tract, joins state gamelands, borders Rt. 81 & secondary road, Pine Grove area, good hunting area, call for details, \$175,000.

SNYDER COUNTY
 65 Acre general farm w/88x45 barn w/block addition. Large 90x36 implement shed, lg. combination corn crib & shed. Lovely 2 1/2 story home w/kitchen, dining room, living room 3 bedrooms & bath. Completely remodeled \$125,000 #344.

BRADFORD COUNTY
 100 acre, 80 T dairy farm, features 54 stall barn, barn cleaner, 16x50 and 16x60 silos, 20x30 Harvestore silo, w/unloaders, 60' bunk feeder, large pole barn, 800 gal. bulk tank, lovely 7 room home w/modern kitchen and bath, all for \$150,000. #376

235 acre dairy farm, 125T, 3 bedrm. brick ranch house w/large l.r., kitchen & bath. Features new 50 cow stall barn w/pipeline milker, bulk tank, etc. 2 story bank barn for dry cows & heifers, 14x40 and 20x60 silos and bunk feeder, \$300,000.

5 acre Dairy Farm. Modern 74 stall dairy barn. Bulk tank, steel pipe line, barn cleaner. 20x32 Harvestore silo and 20x60 concrete silo. Manure storage. Modern Ranch home with 4BR's, Kit., DR, LR, Bath and Den. \$145,000. Also second house available

BUCKS COUNTY
 145 Acre jug milk farm superb facilities, lg. store & sales area, 3500 gal. milk holding tank, modern processing facility including ice cream, 15 cow free stall, 5 lg. silos, lg. heifer facility, 1 single home, shop, storage shed, etc. 200 cows, 250 heifers, full line of machinery, additional rental acreage available. Call for details. \$900,000

SUSQUEHANNA COUNTY
 102 acre w/14 acre natural lake, 69 acres hardwood forest, large modern ranch house w/two & one car garage, kitchen, dining room w/enclosed deck, living room w/stone fireplace & cathedral ceiling, 5 bedrm., 2 1/2 bath, workshop, 2 family rooms and apartment w/2 bedrooms, kitchen, living room, family room, bath. Also 2 cabins (one winterized) and cabin-site w/well & septic adjoins state gameland. 15 minutes from Elk Mountain ski area \$160,000

520 acre dairy farm, w/120 acre approved land fill, 165 acres tillable, new 69 tie stall barn, 20 free stalls, modern milking parlor & liquid manure system, 2 large sheds, large main dwelling & 2 double houses and trailer 24x65 concrete silo, 20x80 and 20x40 Harvestore silos, 105 cows, 35 heifers, 3 large bull dozers and full line of machinery, lock stock & barrel \$1,200,000

COLUMBIA COUNTY
 180 acre dairy farm, 118 tillable, 36 stalls, bulk tank, several sheds & second small barn, corn crib, 2 silos & grain storage bins. Lovely 2 story farm house with 9 rooms & 1 1/2 baths, remodeled. Slightly rolling & level good ground \$225,000, make an offer, reduced \$175,000 #310

187 acre dairy farm, 170 T, pasture w/stream, 2 solid and lovely farm houses, 130 free stall barn, 70' bunk feeder, harvestore and concrete silos w/unloaders, 2 large trench silos, large machinery shed, 2 large heifer sheds and much more. \$530,000.

OTHER FARMS AVAILABLE
 Please Call and Tell Us Your Preference
PAUL M. LONGACRE
 Rt. 100 Heretford, PA 18056
Ph: 215-679-5919

TIOGA COUNTY
 800 Acre Dairy Farm. 400 T. 2 very good, lovely homes. 83 stall dairy, barn. Steel pipe line, 1000 gal. tank and barn cleaner. (2) 16x60 and (1) 14x40 silos with unloaders. Large heifer barn. \$365,000. Full line of machinery and cattle available.

NEW JERSEY
 80 acre dairy farm, gently rolling to level, streams & pond 2 1/2 story home with 4 bedrooms, 2 1/2 baths, large remodeled kitchen, dining room, 60 stall barn & 80 freestall milkhouse, large shop, new large machinery shed & corn crib, 14x40 concrete silo & 200x25 trench silo. \$250,000