



Ladies Have You Heard?

By Doris Thomas
Lancaster Extension
Home Economist

HOLIDAY STAIN REMOVAL TIPS

In the excitement of the holidays there's bound to be a spilled liquid or a dripping candle that can cause a spot or stain. So plan now to buy a few basic items to help with stain removal emergencies. You will need paper towels, cleaning fluids, a sponge, oxygen bleach, chlorine bleach, petroleum jelly and an enzyme pre-soak.

The key to stain removal is immediate treatment. When

company is present and a spill occurs, use paper towels to absorb as much of the liquid as possible. Soak a sponge in cool water and use it to remove further traces of the spill. Later, you can get down to the business of the final stain removal.

Test any stain remover on a corner of fabric first to see how it reacts. Treat spots from the back of the fabric. Place the spot downward on some paper towels so

that the stain will come off the fabric instead of going through it. After treatment, regular laundering will usually remove the last traces of the stain.

Here are some special methods for treating the most common holiday-type stains.

Sponge fruit stains, including cranberries, immediately with cool water. Later soak in warm water and enzyme pre-soak. Then launder. If possible, launder again using chlorine bleach.

For gravy or milk stains, work a paste of detergent and water into the stain. If a greasy stain remains after laundering, sponge with a dry-cleaning solvent. Soak coffee or tea stains in warm water and an enzyme pre-soak or oxygen bleach and launder.

For candle wax spots, scrape off as much wax as possible. Then place the stain between layers of paper towels and press with a warm iron. Next, place the stain face downward on paper towels and sponge the back with drycleaning solvent. Launder when dry.

For lipstick spots, rub undiluted liquid detergent into the stain until outline of stain is removed. If after laundering, stain remains, sponge with drycleaning solvent.

SEW BABY'S CHRISTMAS PRESENT

Sewing gifts for baby this Christmas can be fun and easy since most gifts can be made without darts, facings, linings, or other difficult sewing techniques.

Select only soft, smooth fabrics for free, easy movement and restful sleep. Be sure they are washable and absorbent.

Knits are an excellent choice because they stretch as the baby moves. Consider buying fabric which is flame retardant for extra protection for baby. Avoid scratchy trims, and large buttons or snaps which can irritate the young child's skin. Flat felled seams or French seams make a durable, non-irritating seam finish.

An exact fit is not required. In fact, garments should be easy to put on. Pulling tight fitting garments over the infant's head can be a difficult and upsetting task. Long openings, using grippers or zippers, will aid in easy dressing for an active baby - especially one still in diapers.

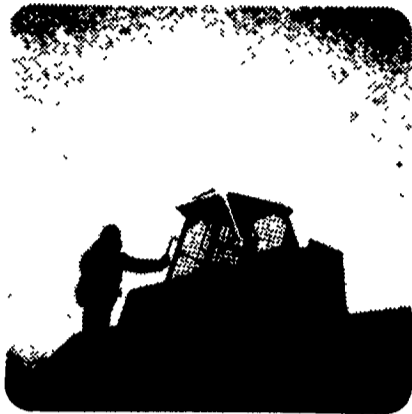
When sewing for baby, remember that growth occurs rapidly during the child's first year. Garments will be outgrown quickly. Avoid making a large number of garments the same size.

You can also make quilts, blankets, bibs, bath towels, burp pads, infants seat covers and pads, diaper holders, toy bags or other items the baby's mother will find useful.

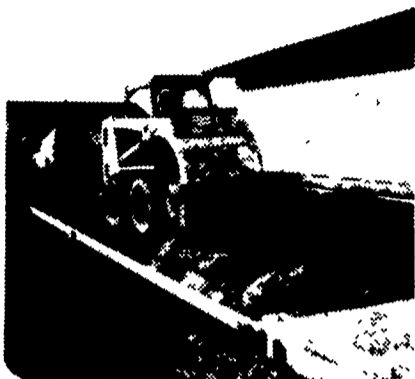


bobcat®

One More Job For The Versatile Bobcat



7:01 am



7:25 am



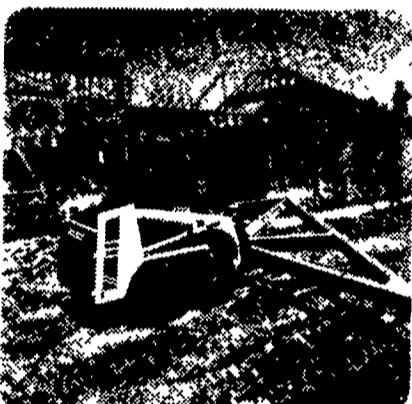
8:43 am



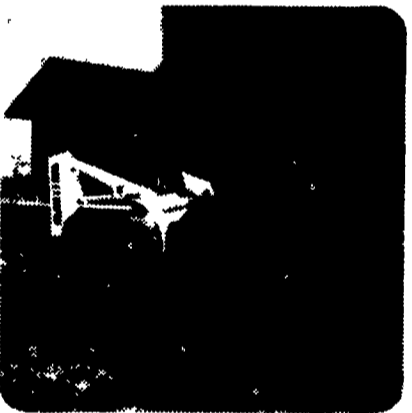
10:50 am



1:10 pm



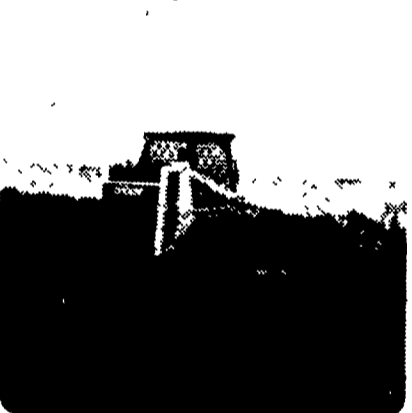
1:45 pm



2:36 pm



4:51 pm



6:48 pm



Ahead of its time... to keep you ahead of your work!

The all new hydrostatic 700 Series

9 Series, 17 Models,
Air or Liquid Cooled,
Gas or Diesel, Skid-Steer and
Articulated.

11.75%
INTEREST
from
Clark Equipment Credit

CLARK

Carlisle, PA
PETERMAN
FARM EQUIPMENT
717-249-5338

Chambersburg, PA
CLUGSTON
IMPLEMENT INC.
717-263-4103

Harrisburg, PA
HIGHWAY EQUIPMENT
& SUPPLY CO.
717-564-3031

bobcat® DEALERS:

Hatfield, PA
LCL CONSTRUCTION EQUIP.
SALE CO.

215-362-2510

Wilmington, DE
302-998-0128

Honesdale, PA
CHARLES H. SIEPIELA, INC.
717-253-3334

Honey Grove, PA
NORMAN D. CLARK
& SON INC.
717-734-3682

Martinsburg, PA
BURCHFIELD'S INC.
814-793-2194

Mill Hall, PA
DUNKLE & GRIEB
717-726-3115

Myerstown, PA
SWOPE & BASHORE INC.
717-933-4138

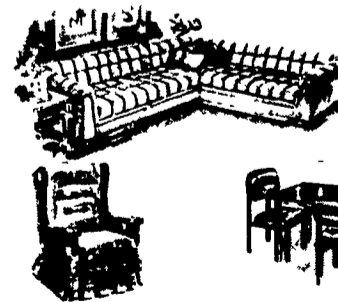
Palm, PA
WENTZ
FARM SUPPLIES INC.
215-679-7164

Quarryville, PA
GRUMELLI'S
FARM SERV.
717-786-7318
Slatington, PA
SCAT ENTERPRISES INC.
215-767-1711

Towanda, PA
S.P.E. INC.
717-265-4440
Turkhanock, PA
BARTON FARM SUPPLY
717-836-3740



NEW & USED FURNITURE



Complete
Household

With Our Low Overhead
We Sell Quality Furniture
At Reasonable Prices

For Sale . . .

VERY GOOD USED WARM
MORNING COAL STOVE

MOSES P. FISHER

RD 1 Gap, PA

2 mi. north of Rt. 30 on Rt. 10

HOURS: Mon. thru Sat. 8 AM to 8 PM