

MON. DEC. 10 - 11 AM  
Public Auction of Farm Equip. on the farm located just off Rt. 14 (Del.) Take Rt. 297 North to Rt. 296, 1/2 mile to farm. The farm is halfway between Denton, MD, and Harrington, DE. (From Denton (Rt. 313) take Rt. 317 to DE Rt. 14) From Harrington Rt. 13 take Rt. 14 West to 297, turn right and then left on 296). Harry Ronald & Eunice W. Collison, Owners. Harry Rudnick & Sons, Inc., Auctioneers.

THURS. DEC. 13 - Public Auction of Farm Equipment. Located at Horsts Machinery Lot, 1 mile east of Marion, PA. Ralph Horst, Manager.

THURS. DEC. 13 - 2 PM Public Sale of 35 acre farm. Located NE of Martindale along Centerville Rd. Earl Twp., Lanc., Co., PA. By John M. & Anna Mary Sauder. LeRoy S. Horst, Auctioneer.

FRI. DEC. 14 - 1:30 PM Public Auction of State Grade Consignor Feeder Pig Sale. Located at the Carlisle Livestock Market, Inc.

FRI. DEC. 14 - 5:30 PM Gap Auction. Antiques and Household Goods sold at every auction. Located off Rt. 41, Lancaster Turkey Hill Minit Market, cross RR bridge. Ira Stoltzfus & Son, Auctioneers.

**Public Auction Register**

**BANKRUPTCY AUCTION**

HENRY'S FARM MARKET CO. & HENRY'S FLOWERS & PLANTS OF MIDDLETOWN, LTD.

Located 1 mile south of Middletown, Del. on Route 896.

**THURSDAY, DEC. 6, 1984**  
at 12:00 Noon

Cooler room, glass doors, compressor, work and display tables, shelving, coal & oil furnaces, fans & heaters, steel quonset frame greenhouses, 22'x100' of 6 mil Poly covers, stem cutter, wire, baskets, wood & plastic tubs, thousands, of containers, sprays, insecticides, garden food, fertilizer, hand tools, equipment and supplies for the flower business, gifts, candles, greeting cards, and much more...Office desk, chairs, Xerox 2600 copier, files, etc...

Inspection from 9 a.m. morn of sale, Cash, guaranteed funds, immediate removal.

**THOMAS DOYLE RUNNELS**

Trustee,  
249 E. Main St., Newark, DE 19711  
(302) 737-4150

Rudnick Associates, Auctioneers  
(302) 764-3347

FRI. DEC. 14 - 11:30 AM. Bloomsburg, PA.  
Glen-Bet Complete Columbia Co. Owners.  
milkng herd and bred Glen & Betty Bowman.  
heifer dispersal, bulk tank, Fraley Auction Co. Dale Hoover Pedigrees.

**GOOD'S AUCTION**

111 N. Maple Ave. Leola Pa.  
Hay and Straw Sales Every Wed.  
At 12:00 Noon

Starting January 1st  
Starting Time at 11:00 A.M.

Goods Auction  
111 N. Maple Ave.  
Leola PA. 17540



**PUBLIC AUCTION**

**95 ACRE LIMESTONE FARM**  
**SAT., DECEMBER 15, 1984**

AUCTION TIME: 2:00 P.M.

DIRECTIONS: Take Route 419 North from Schaefferstown to Millbach, at Millbach Mennonite School turn left, go approx. 1 mile to first road left, turn left to farm on right, 1 mile south of Richland, Millcreek Township, Lebanon Co., Pa.



**2 1/2 STORY FRAME DWELLING**

containing eat-in kitchen with built-in cabinets; living room; dining room; family room w/wall to wall carpet on first floor. Second floor contains 5 bedrooms and bath. Cement basement; cold cellar; oil hot water baseboard heat; 2,000 gal. fuel tank; vinyl siding; storm doors & windows; well with system; mature shade;

**STONE & FRAME BANK BARN**

with 2 drive floors, 2 mows, ATTACHED FEED LOT FOR UP 150 STEERS, concrete bunk, concreted stable floor; LARGE CORN BARN with implement storage; tobacco shed for approx. 6 acres tobacco, large stripping room, dampening cellar; 3 car garage;

20x60 FT. STAR SOLID CONCRETE SILO with unloader;

16x60 FT. LANCASTER STAVE SILO with unloader; 10x50 ft. solid concrete silo.

All acreage tillable except that surrounding buildings; LOTS OF ROAD FRONTAGE.

Inspection at OPEN HOUSE: Saturday, Dec. 1st & 8th, from 12:00 noon to 3:00 p.m., or by appointment, call 717-866-2970. Balance of farm may be seen anytime.

TERMS: 10% Down Day of Auction, Balance in full April 1, 1985.

AMISH FAMILIES living within a few miles of this farm. If in need of assistance to obtain financing, or need transportation to inspect this property, call Paul E. Martin, Auctioneer, at 717-733-3511.

NOTE: This beautiful, well-kept farm is ready to go. The limestone soil is an extra plus you will want to consider. If you are looking for a farm, do attend this auction. All Herein information is believed to be accurate but is being used for advertising purposes only.

AUCTION BY:

**PAUL Z. & EVA B. MARTIN**

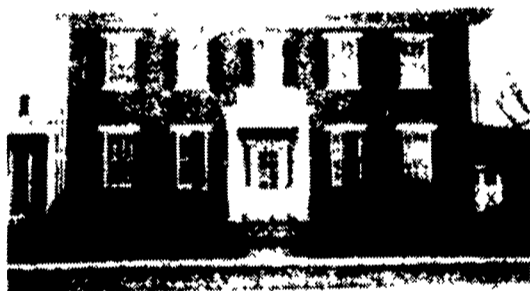
Henry Steiner, Attorney  
Auction Conducted By:  
J&P Auctions  
Paul E. Martin, Auct. AU-001601-L  
Ephrata, PA 717-733-3511  
John D. Stauffer, Auct. AU-001509-L  
Lititz, PA 717-665-5099

**PUBLIC SALE**

OF REAL ESTATE  
**SATURDAY, DECEMBER 1, 1984**  
at 10:00 A.M.

Location—

5 miles West of Huntingdon Pa., 1/2 mile north of U.S. Route 22, at the west end of Alexandria Pa. Close to the high tower at the Mead Plant.



All buildings are 2 or 3 bricks thick.

Colonial house, 4 bedrooms, 1 1/2 baths, large open stairway. Wall to wall carpet, fireplace, hot water heat, 3 room summer house 18'x36', 2 car garage, new roofs & spouting, level ground, approx. 400 ft. river frontage, approx. 6 acres.

Tract No. 2 — Containing 800 ft. river frontage.

Inspection Nov. 22, 23, 24, 25, 30 1984 at 12:00 till 3:00 P.M. For more information 717-597-3971.

Terms: 10% down day of sale. Settlement Dec. 22, 1984 or before.

Property located 15 minutes from Raystown Dam.

**PERSONAL PROPERTY—**

Bedroom suite, dining room, 5 old dove tail dressers & chest of drawers, (some with mirrors), 2 sets of 6 old oak chairs, 4 maple chairs, chestnut ext. table and 4 boards, (good condition), round table, 6 large old chests, 2 decorated (one signed Donald Allen, dated 1891), old kitchen cook stove, large old slate top pool table, (needs repairing), bed springs & mattress, old drying trays, fish aquarium, baskets, peacock feathers, old kerosene lights, vases, lanterns, bottles, jugs, old wooden toys, old records, slaw cutter, tub & stomper, butter churn and stand, sausage stuffer, meat grinder, meat hooks, agget ware, tin ware, cradle, wringer type Maytag washer in good cond., old 8 leg table, 2,000 bricks.

**DISHES—**

Approx. 20 bowls, Germany, Barvarian, R.S. Prussia, RARE Mellon Box Plate, (R.S. Prussia).

**CARNIVAL GLASS—**

New Carnival - 4 Robin water sets, white, blue, gree, red, 2 Gone With the Wind lights, vases, odd dishes, souvenir pieces.

Old Carnival - Approx. 75 pieces, 7 piece purple Grape & Cable water set, Grape & Cable punch bowl, base and 12 cups marked N. (Purple), blue peacock at urn compote, pair white car vases, 2 covered butter dishes, covered sugar & spooner, (marigold).

**TUMBLERS—**

6 Water Lily, 6 Butterfly & Berry, 20 odd tumblers, marigold and dark, 6 Memphis punch cups and other cups, other pieces.

**COINS—**

46 old silver coins, 16 silver dollars, 12 half dollars, 18 quarters, old foreign pennies, half pennies, two cent pieces, dates 1852- 54- 56- 59- 63- 65; others dated to 1964.

Coins & Real Estate sold approx. 12:00 Noon.

Property a fine old house in good condition. Being sold due to death of owner.

Auctioneers: Wishard, AUL0010-29L  
Claycomb, AU00015L

**PUBLIC AUCTION**

CONSTRUCTION EQUIPMENT  
CARS, TRUCKS, LOADERS, ETC.

**FRIDAY, FEBRUARY 15, 1985**  
11 A.M.

FELTON, DELAWARE

Attention Contractors & Equipment Dealers  
Consignments are now being taken

Consign Now

Call or write us for consignment forms.

Chester Lee Carroll

Harry Barrett, Jr. Sls. Mgr.

P.O. Box 307, Felton, Delaware 19943

302/284-4911 302/284-4541

**Carroll's Sales co.**  
P.O. BOX 307, U.S. RT 13  
FELTON, DELAWARE 19943

302/284-4911

302/284-4541

**PUBLIC SALE**

OF REAL ESTATE, HOUSEHOLD  
GOODS, TOOLS, CARS, COINS

LEOLA

**SATURDAY, DEC. 1, 1984**

SALE TIME 9:30 A.M.

Tools First — Car & Truck 1:45 P.M.

Real Estate 2 P.M. — Coins Last

LOCATED AT 209 W. MAIN STREET,  
LEOLA PA. (RT. 23).

**2 APARTMENT DWELLING**

2-CAR BLOCK GARAGE,

3-CAR ALUMINUM GARAGE

**ANTIQUES & HOUSEHOLD GOODS**

1/2 Doz. Decorated Spindle Back Kitchen Chairs; Child's Fiddle Back Chair; 5 Pc. Waterfall Bedroom Suite; Oak Office Desk; Large Office Safe; Oak Clothes Tree; Oak Chair; Old Coffee Grinder; Sad Irons; Antique Wall Rack; Pocket Watches; Name Card Scrapbook; TRAINS — LIONEL STANDARD GA. 318E ENGINE & PASSENGER CARS; Railway Car & Observation Car; Lionel 248 Engine; Lionel 3110 Engine, Track & Accessories; Surveyors Instrument & Tripod; Remington 22 Rifle; 12 Ga. Shotgun; BB Gun; 12x16 Wood Storage Barn (To Be Removed); 1976 Buick LeSabre 4 Door Sedan; 1958 Ford Pick-Up Truck; 12 Ft. Aluminum Boat.

ALLIS-CHALMERS MODEL B TRACTOR WITH SNOW BLADE & CULTIVATOR; JOHN-DEERE MODEL 110 RIDING TRACTOR (Mower Deck); 6 h.p. TROY-BILT ROTOTILLER; BILLY GOAT YARD & DRIVE MOTORIZED VACUUM; Snapper Rotary - Self-Propelled Power mower (Rear Bagger); Garden Dump Trailer; Motorized Orchard Sprayer; Small Corn Planter; Planet Jr. Garden Tractor; Hydraulic Jack; Electric Drills; Circular Saw; Acetylene Gauges & Torches; Floor Jack; Large Bench Vise; 3/4 h.p. Bench Grinder; Auto Ramps & Creeper; Bar & "C" Clamps; B&D Orbital Sander; Saws; Misc. Hand Tools; Soldering Gun; MECHANICS TOOL CHEST (Drawers); Many Micrometers; Mechanics & Machinist Tools; Snap-On Socket Set; Platform Scales; Portable Fairbanks Platform Scales; Metal Workbench; Water Pumps; Plumbing Tools; Pipe Bender; Pipe Vise; Tinner's Torch & Irons; Blow Torches; Slate Cutter; Spray Guns; Marquette Heavy Duty Battery Charger; Rubber Tire Wheelbarrow; Extension & Stepladders; Log & Tow Chains; Log Lifter; Block & Tackle; Heavy Duty Electric Cords; Antique Martin House; Wooden Express Wagon; Iron Troughs & Kettles; Lead Pots; 2 Active Bee Hives; Bee Equipment; Bag Wagon; 2 Flat Belts; 3 Oil Tanks (Pumps); Cast Iron Radiators; Scrap Lead; Plate Steel; Grindstones; Fencing.

COINS — 5 SILVER DOLLARS 1877, 1891, 1896, (2) 1904; Silver Halves & Dimes; Nickels & Pennies.

COINS TO BE SOLD LAST

TERMS BY:

**DAVID L. BURKHOLDER**

T. Glenn Horst, Auct.

859-1331 — AU-000438-L

Timothy G. Horst, Auct.

738-1245 — AU-001767-L

Wentz, Weaver & Kling, Attys.