

# Jay Reiff ends 4-H career in winning style

BY JACK HUBLEY

NEW HOLLAND — A Lititz exhibitor ended his nine-year 4-H career on top last Saturday by taking grand champion honors in the Southeast District 4-H Beef Show held at the New Holland Sales Stables.

"Now I can go out a winner", Reiff smiled, after his 1,210-pound Angus-Chianina steer took top honors in the three-county show.

Reiff had also competed in the Lancaster County Baby Beef Roundup held one day earlier, where judge Erskine Cash of Penn State had placed Reiff's grand champion steer only second in his class.

"He was a little too spunky yesterday, and the judge didn't get a chance to really feel him," Reiff

explained. "But he really does have good, uniform finish."

"Things kinda came together this year," said the son of Mr. and Mrs. Ivan Reiff, who also chalked up a grand champion victory in this year's New Holland Fair steer show.

For the first time this year, a county champion was named for each of the three counties participating in district competition. Reiff's entry was named the Lancaster County champion, and a steer shown by Mike Messick of Middletown, was named Dauphin County champion, as well as reserve grand champion of the show.

"He had all he could eat this week, and I thought I had a good steer," said Messick after his

1,285-pound Chianina-Angus steer was named the show's number-two entry. Also named champion in this year's Middletown Fair, Messick's steer was a home-grown entry sired by Ideal, a Messick bull owned by his sister Patty.

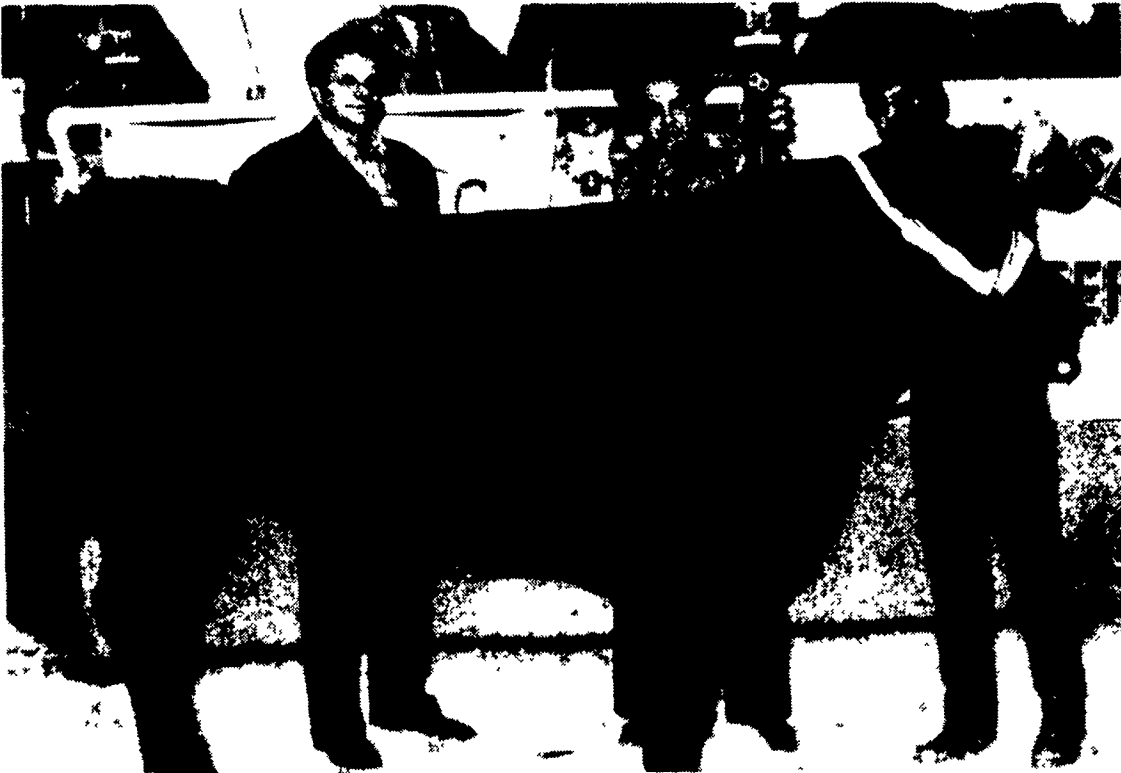
The son of Mr. and Mrs. Mylin Messick, Mike is a ninth-grader at Hershey High School with six years of 4-H competition already behind him.

The show's Chester County champion was also the champion of the lightweight division, exhibited by Robbie Rohrer of Nottingham. Rohrer had exhibited the District Show's grand champion in 1982.

In the District 4-H Beef Sale that followed Show action, B&R Cattle Company teamed with Vintage



The District Show's reserve champion was shown by Mike Messick and purchased by Weaver Martin Trucking for \$1.20 per pound.



John Bowman (left) of B&R Cattle Co., and Robert Frame of Vintage Sales Stables teamed up to offer the top bid of \$1.54 per pound for Jay Reiff's grand champion steer.

Sales Stables to offer the top bid of \$1.54 per pound for Jay Reiff's grand champion steer.

Mike Messick's reserve champion went to Weaver Martin Trucking Co. of East Earl for \$1.20 per pound.

The Chester County champion shown by Robbie Rohrer was purchased by Jim Herr of Herr's Foods in Nottingham, for \$1.19 per pound. The sale's 62 steers averaged \$.72 per pound, not counting the champions.

Following are the complete District 4-H Beef Show results:

- |  |   |
|--|---|
| <p><b>District Beef Show</b><br/> <b>Class 1 (1060-1070 lbs.)</b><br/>                 1 Kreg Weaver, 2 Ryan Rohrer, 3 Fred Ryder<br/> <b>Class 2 (1090-1105 lbs.)</b><br/>                 1 Anita Mack, 2 Chris Little, 3 Doug Hertzog<br/> <b>Class 3 (1120-1165 lbs.)</b><br/>                 1 Robbie Rohrer, 2 Angie Longenecker, 3 Tammy Baker<br/> <b>Class 4 (1170-1195 lbs.)</b><br/>                 1 Greg Davis, 2 Jeremy Longenecker, 3 Jay Hess<br/> <b>Class 5 (1200-1205 lbs.)</b><br/>                 1 Lisa Howe, 2 Philip Howe, 3 Joseph Horton<br/> <b>Class 6 (1210-1235 lbs.)</b><br/>                 1 Jay Reiff, 2 John Hess, 3 Jimmy Landis</p> | <p><b>Class 7 (1240-1260 lbs.)</b><br/>                 1 Geraldine Popp, 2 Margaret Herr, 3 Deb Wolgemuth<br/> <b>Class 8 (1265-1280 lbs.)</b><br/>                 1 Mike Messick, 2 Marcus Kline, 3 Bryan Whitman<br/> <b>Class 9 (1285-1340 lbs.)</b><br/>                 1 Mike Messick, 2 Marcus Kline, 3 Bryan Whitman</p> <p><b>Lightweight Champion</b><br/>                 Robbie Rohrer<br/> <b>Reserve Lt. wt</b><br/>                 Anita Mack<br/> <b>Middleweight Champion</b><br/>                 Jay Reiff<br/> <b>Reserve Middle wt</b><br/>                 Greg Davis<br/> <b>Heavyweight Champion</b><br/>                 Mike Messick<br/> <b>Reserve Hvy wt</b><br/>                 Grand Champion<br/>                 Jay Reiff<br/>                 Reserve Grand Champion<br/>                 Mike Messick</p> <p><b>Trio</b><br/>                 1 Lancaster Co., 2 Dauphin Co, 3 Chester Co<br/> <b>Showmanship Senior Div.</b><br/>                 1 Margaret Herr, 2 Greg Davis, 3 Jan Waltz<br/> <b>Intermediate Div</b><br/>                 1 Mike Messick, 2 John Kettering, 3 Robbie Rohrer<br/> <b>Junior Div</b><br/>                 1 Dwaine Livengood, 2 Angie Longenecker, 3 Jim Landis</p> <p><b>Champion Showman</b><br/>                 Margaret Herr</p> |
|--|---|

## FISHER AND STOLTZFUS TRAILER SALES

717-768-3832 or 717-768-3532  
East of New Holland, Pa.



- 6x16 Stock Trailer
- Dion Forage Wagon
- 8x20 Gooseneck Flatbed
- 1 Used 6x16 Stock Trailer

## Special Sale On Tiberdome Calf Hutches

— IN STOCK ONLY —



SALE ENDS NOVEMBER 30, 1984

Call For Prices



automatic farm systems

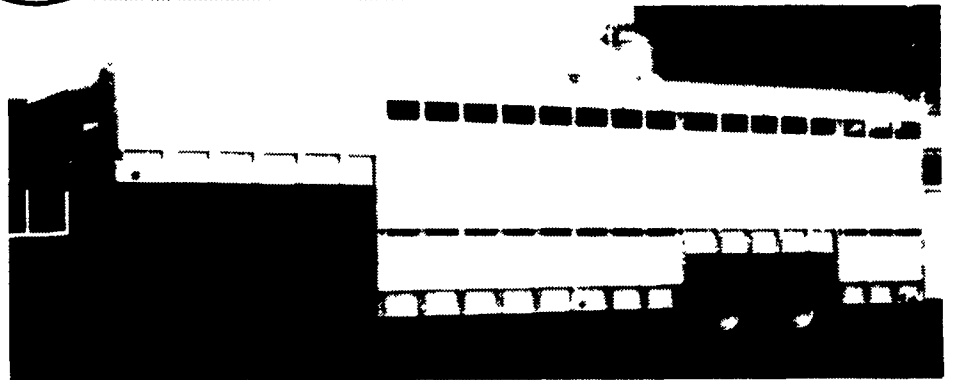
608 Evergreen Rd., Lebanon, PA 17042

(717) 274-5333

Check Our Low Prices Before You Buy



## ALUMINUM GOOSENECK TRAILERS



### ATTENTION FARMERS & LIVESTOCK HAULERS:

ALUMINUM EBLY GOOSENECK TRAILERS, Standard Specifications:

LENGTHS AVAILABLE: 14' to 28' (longer lengths available as option)  
 WIDTHS: 96" Standard - 102" Optional  
 HEIGHT: 6'6" Standard - 7'6" Optional

A versatile, lightweight, Eby aluminum stock trailer is built to provide years of maintenance free service. An Eby trailer is custom built to fit your individual hauling needs - No mass production! We use only quality components and strong alloy aluminum to manufacture what may be the last trailer you'll ever buy.

CONSIDER THE FEATURES OF AN EBLY ALL-ALUMINUM TRAILER

**LIGHTWEIGHT**  
 Eby stock trailers are 25-35% lighter than comparable steel trailers. Less weight means better fuel mileage or increased payload.

**MAINTENANCE**  
 Eby aluminum trailers won't rust. Welding and painting can cost you dollars in down time and repairs.

**DURABILITY**  
 Eby trailers are built tough. Quality components are 6061 alloy aluminum provide the ruggedness required in a livestock trailer.

For more information on the economical choice in livestock trailers, contact:

**MH EBLY, INC.**

P.O. Box 127 Blue Ball, PA 17506

717/354-4971

