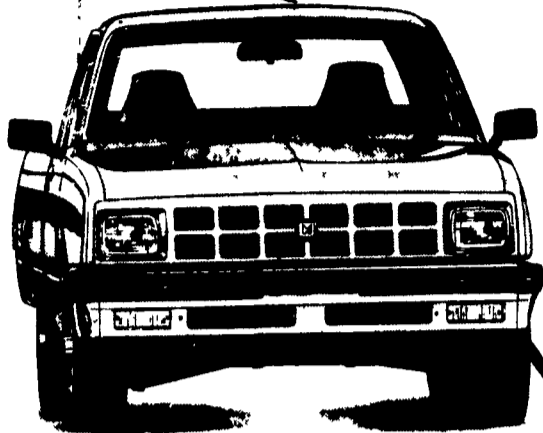


# FAULKNER

## ISUZU ISUZU, OUR WHEELS ARE ALWAYS TURNING

FROM \$5993 Gas  
\$6879 Diesel  
OR LEASE FOR \$123<sup>01\*</sup> per mo  
GAS MODEL



### ISUZU SHORT BED

*Ready to get you there under the worst conditions... ahead of the game!*

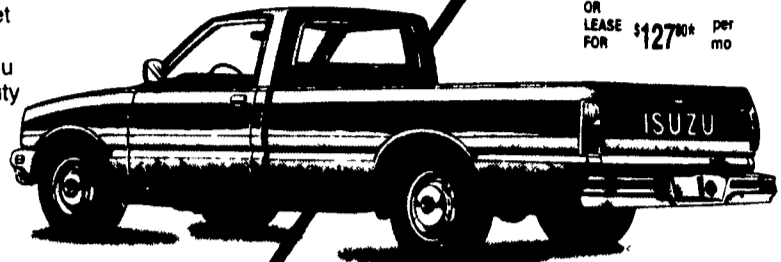
Built for the toughest jobs in America. With its comfortable and stylish interior, special 2-tone paint, spoker wheels, AM/FM stereo and full instrumentation, including tach.

## '85 ISUZU... MORE TRUCK — TOUGH FLEET FEATURES

Diesel MPG  
38 Hwy 35 City

- ★ No Contest
- ★ You can't drive a tougher Fleet Truck than an Isuzu P'UP
- ★ Get the sheer strength of Isuzu big truck experience and quality
- ★ These trucks are so tough, they just won't quit!
- ★ You get more choices —
- ★ Short bed or long
- ★ Gas or diesel
- ★ 2-wheel or 4-wheel drive
- ★ Manual or automatic
- ★ Standard, Deluxe or Sporty LS trim

From \$6169  
29 Hwy 23 City



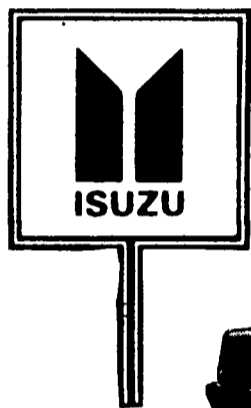
### ISUZU LONG BED

*Makes more long distance calls!*

The Isuzu Diesel Long Bed delivers an incredible 688 highway miles per tankful. More than any other imported economy truck made.

And it goes a long way when it comes to comfort and styling and performance, too. Over the long haul, you'll see more of your destination and less of the gas stations in between!

OR LEASE FOR \$127<sup>00\*</sup> per mo



### TROOPER II

*A trooper that can report for any kind of duty!*

Trooper II is a tough 4x4 off-roader. It's a family station wagon! It's a comfortable touring car. It's a roomy cargo utility truck.

From \$9892  
21 Hwy 19 City

OR LEASE FOR \$196<sup>02\*</sup> per mo



From \$8934  
23 Hwy 21 City

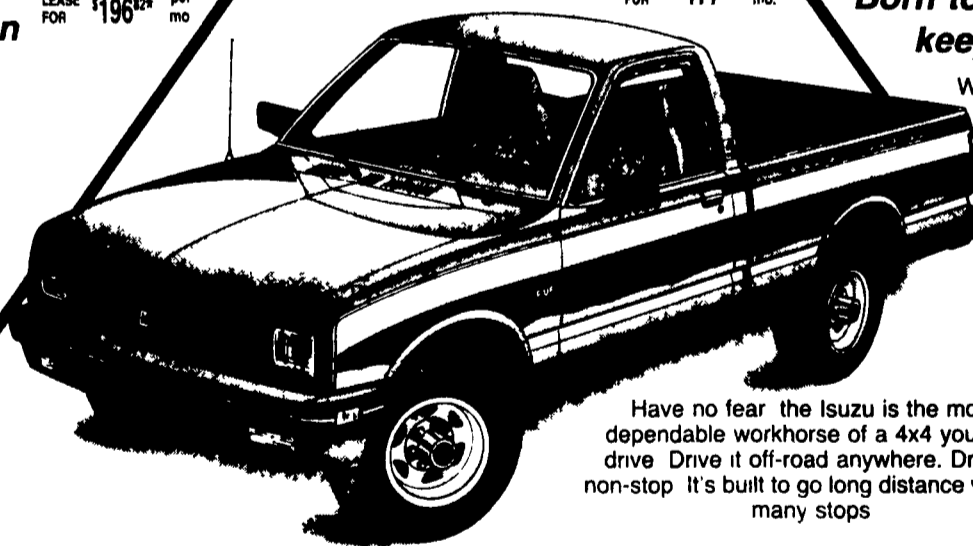
OR LEASE FOR \$190<sup>00\*</sup> per mo

### ISUZU 4x4 LONG BED

*Born to run and keep on running*

With 45.7 cubic feet in our long bed Isuzus are built to handle and haul plenty of cargo. They can handle up to a 1,690 pound payload, depending on engine and transmission. It will also give you a run for your money with a tough 1.9 liter gas engine or a quick-starting, quiet 2.2 liter diesel. You can have it your way!

Have no fear the Isuzu is the most dependable workhorse of a 4x4 you can drive. Drive it off-road anywhere. Drive it non-stop. It's built to go long distance without many stops.



### ISUZU 4x4 SHORT BED

*Goes where others fear to tread!*

With Isuzu Trucks... Reliability is the key word! Reliability has been there for 68 years and always will be!

Our Pickups can really pick up. And the all-steel, welded body and steel ladder frame are built to take it. Isuzu trucks undergo a special six-stage anti-corrosion painting process. What's the Secret of Isuzu's Reliability? **QUALITY — QUALITY — QUALITY**

At Faulkner We Believe In Isuzu... Drive One And You Will, Too!!

## One Of Central PA's Leaders In Isuzu Sales!

Rt 30 & Rohrerstown Rd.  
Lancaster, Pa  
717-299-0961  
Monday thru Friday 9 to 9  
Saturday 9 to 5

ISUZU

# FAULKNER

