

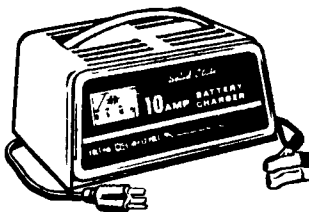
CENTRAL TRACTOR FARM & FAMILY CENTER



Hurry!

Sale Prices Good
Now Thru
Sun., Nov. 25th
Thanksgiving Day - Closed

SAVE up to 5** Battery Chargers



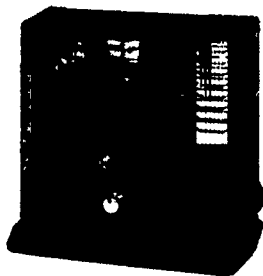
Charges 6 and 12 volt batteries
Rugged steel case accurate numerical
dial ammeter shows exact rate
of charge

6 Amp 24⁹⁹
6282 084 Reg. 27 99

10 Amp 28⁹⁹
16276 084 Reg. 32 99

10 Amp Automatic 36⁹⁹
16283 084 Reg. 41 99

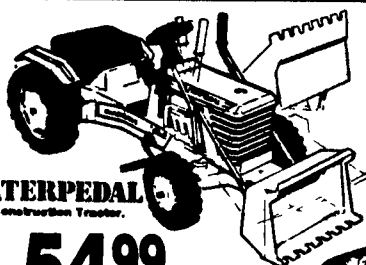
**10-30-50 Amp
Booster Charger** 43⁹⁹
16284 084 Reg. 47 99



59⁹⁹
Reg. 69 99 / SAVE 10 00
24688-260

**9,300 BTU
Kerosene Heater
with Fan**

This deluxe model features a built
in fan to provide better warm air
circulation elegant woodgrain styl-
ing and an efficient glass chimney.
It delivers 9,300 BTU a warmth and
operates for 18 hours on one fueling



54⁹⁹
Reg. 69 99 / SAVE 15 00
18470-135

**Caterpillar
Construction
Tractor**

Working shovel scoops lifts carries
and dumps Adjustable chain with
chain guard Tough wear resistant
wheels Adjustable seat for growing
children Pedal powered



979
Reg. 11 88 / SAVE 2 08
19057 132

1/16 Mixer Mill



9⁹⁹
Reg. 13 49 / SAVE 3 50
23911-242

**Radio Flyer
Toy Wheelbarrow**

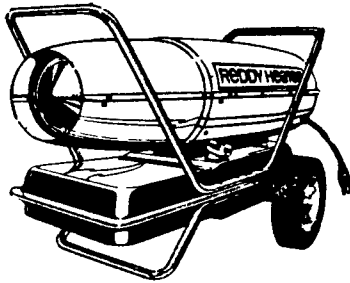
Just like Dad's! Styled after the real
thing with an all steel bright red
body that rolls on rubber tires Pre
schoolers love it Model 40

94⁹⁹
Reg. 99 99 / SAVE 5 00
16261-084

**250 Amp Booster
Charger**

Solid state circuitry for dependability
high temperature copper wound
transformer, full wave silicon recti-
fiers and a heavy duty 18 gauge steel
case Comes with 8 foot grounded
power cord and 6 foot output cables.
250 Amp Watt Boost 25 Amp
Charge UL Listed.

100 Amp Boost, 10 Amp Charge
16280-084 **NOW 69.99**



259⁹⁹
Reg. 279 99 / SAVE 20 00
23985 260

**97,000 BTU
Space Heater**

Completely portable burns kero-
sene or #1 fuel oil consumes less
than 1/4 gal per hour 8 gallon tank
spark plug ignition and automatic
flame out control

150,000 BTU **SALE 339.99**
24001 260 **Reg. 359 99**

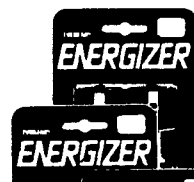
Thermostat for Space Heaters
23981 260 **Now 35.99**



1 66
Reg. 2 19 / SAVE 24%
17508-108

**6 Volt
Lantern Battery**

Dependable, long-lasting 6 volt
battery



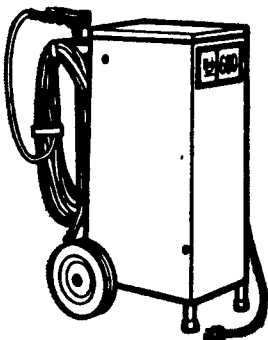
**EVEREADY
EVEREADY ENERGIZER
Alkaline
Batteries**

These batteries provide longer more
dependable service than standard
types.

'AA' 4-pack 1 99
17526 108 Reg. 3 49

'C' or 'D' 2-pack 1 47
17524 108 17525 108 Reg. 2 49

9 Volt 1 47
17523 108 Reg. 2 49



319⁹⁹
Reg. 339 99 / SAVE 20 00
25402 293

**High Pressure
Washer**

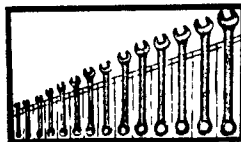
Handy cart mobility 500 600 psi
automatic mixing for easy cleaning
and spraying Built in tank elimi-
nates the need for bottles etc.
Special duty 1/2 hp motor 5-way
valve selects cleaning phase
desirable 100% chemical metered
chemical rinse tank filling and off
2 gpm pump 8 foot grounded power
cord 35' high 15' wide 18" x 18"
deep Requires 15 amps power at
115 volts

**Industrial High Pressure Washer w/
1/2 HP motor and 1000 PSI**
25468 293 **SALE 349.99**

249
Reg. 2 99 / SAVE 18%
20102-155

**Central
Tractor Caps**

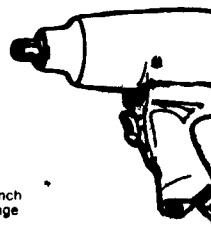
Solid back Adjustable sizes



999
Reg. 14 99 / SAVE 5 00
14212-022

**14 Pc. SAE
Wrench Set**

Drop forged combination wrench
set SAE Chrome plated Size range
1/4" to 1 1/4"



399⁹⁹
Reg. 49 99 / SAVE 10 00
11112-007

**1/2" Air
Impact Wrench**

Has up to 250 ft/lbs of torque
Trigger speed control air regulator
1/2" capacity

Impact Wrench Socket Set
Reg. 19 99 **SALE 17.99**
11111-007



Christmas Trees

Description	Stock No	Reg	SALE
6 1/2 Balsam Fold Away	25880 031	69 99	69.99
6 1/2 Pine Mountain King	25897-031	69 99	69.99
6 1/2 Valley Pine	28119-031	79 99	69.99
6 1/2 Mt King Balsam	28141-031	89 99	79.99
7 Mt King Balsam	28133-031	99 99	89.99
7 Valley Pine	28126-031	109 99	99.99
7 1/2 Scandinavian Pine	27134-031	99 99	89.99

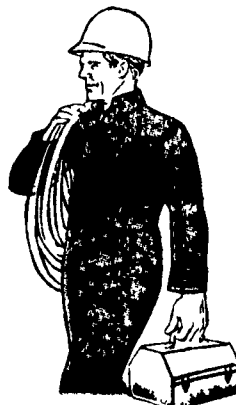
We're featuring a selection of Christmas trees and accessories at
Central Tractor Farm & Family Center
Subject to stock on hand



199
Reg. 2 99 / SAVE 1 00
20252-158

Propane Cylinder

14.1 oz. (Net Wt) Propane cylinder
alone For cooking heating lighting
plus many others



4499
Reg. 47 99 / SAVE 3 00
5040000 168

**Brown Duck
Insulated Coveralls**

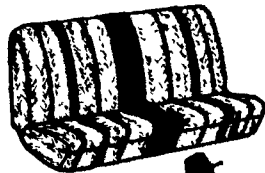
OshKosh 100% Cotton Duck Outer
shell insulated with 33 polyester
fiberfill Zipper breast pocket and
pencil pocket on sleeve Sizes 40-
50

3699
Reg. 39 99 / SAVE 3 00
3530000 168

**OshKosh Green
Insulated Coveralls**

Poly Cotton Twill Outershell insu-
lated with polyester fiberfill Zipper
breast pocket and pencil pocket on
sleeve Sizes 36-50

**OSHKOSH
B'GOSH**

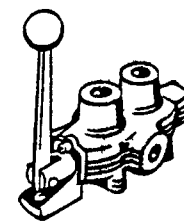


2688
Reg. 32 88 / SAVE 6 00

**Pickup Truck
Saddle Blanket
Seat Covers**

Easy to install tailored seat covers
fit all pickups Under knee rifle
scabbard on full size only Front
storage pockets Washable

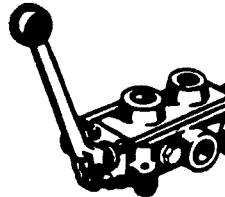
Black (full size)	43151 472
Brown (full size)	43168 472
Blue (full size)	43175 472
Wine (full size)	43651 472
Mini & Midsize	
Black	43182 472
Brown	43190 472
Blue	43202 472
Wine	43669 472



4999
4510-008

**4-Way Hydraulic
Control Valve**

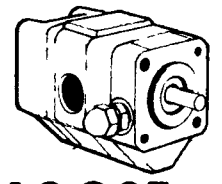
Fully balanced self centering built
in relief valve easy mounting Relief
valves are factory set at 1500 psi



7999
Reg. 84 50 / SAVE 4 51
28138 310

**Hydraulic Control
Valve With Detent**

Features a pressure released detent
with spring return after cylinder
reaches 2000 PSI May be used on
double action cylinders on open
center systems 25 GPM and up to
2000 PSI Inlet and outlet ports are
1/2" and work ports are 1/4"

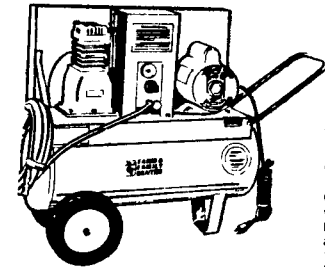


10995
4527-008

**Hi-Low Hydraulic
Gear Pump**

Two stage adjustable gear pump for
use on log splitters It may be driven
by up to a 2 Hp (1800 RPM) AC
electric motor or a 5 Hp (3600 RPM)
gasoline engine 11 GPM @ 3600
RPM

Hydraulic Filter **SALE 12.49**
28165 310 **Reg. 14 49**

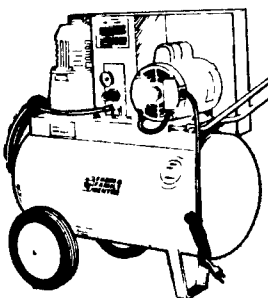


18495
Reg. 199 95 / SAVE 15 00
17980-106

**1/2 Horsepower
Air Compressor**

10 gallon tank 3.4 CFM displ. 2.2
CFM at 40 psi Dial O-Matic control
with easy to read gauge enables you
to dial the pressure desired no
additional regulator needed

15 Air Hose 17791 106 **NOW 5.99**
25 Air Hose 18400 106 **NOW 9.29**
50 Air Hose 18411 106 **NOW 15.99**



44495
Reg. 459 95 / SAVE 15 00
17984 106

**2 Horsepower
Air Compressor**

This compressor matches a big 2 hp
electric motor a big twin compres-
sor with an output of 7.8 cfm at 40
psi and a 22 gallon tank Has many
of the features of a big stationary
unit yet it is as portable as the 1/2
hp unit

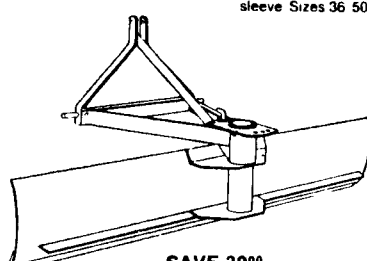
15 Air Hose 17791 106 **NOW 5.99**
25 Air Hose 18400 106 **NOW 9.29**
50 Air Hose 18411 106 **NOW 15.99**



69¢
Reg. 99¢ / SAVE 30%
33062 129

**2 lbs. Bang-O-
Popcorn**

Iowa grown yellow popcorn pops
into large fluffy delicious kernels



SAVE 30**
**Three Point
Tractor Blades**

6' 35 Hp Rating 129⁹⁹
20229 157 Reg. 159 99

7' 35 Hp Rating 149⁹⁹
20225 157 Reg. 179 99



Hydraulic Cylinders

Size	Price	Size	Price
3" x 16"	7999	3 1/2" x 16"	7999
3" x 24"	8499	3 1/2" x 24"	9999
4" x 16"	10999	4" x 24"	12999



9999
Reg. 104 99 / SAVE 5 00

**Universal
Heater Cab**

Will fit most popular models of
tractors Extra side adjustments cut
tapered to fit contour of tractor hood

Side entry 11155 235
Rear entry 11162 235
Small models 11169 235



**YOUR CHOICE
99¢
Starting Fluid**

18261-234
Gives smooth starts in all kinds of
weather Starts engines with low
batteries also for use in diesel
engines 14.6 oz. can

Starting Fluid
18262 234
Fits John Deere and International
Harvester diesel injector recepta-
cles and can be used on hard to start
gasoline engines 11 oz. can

**THESE PRICES WILL BE HONORED ONLY AT THE
FOUR STORES LISTED BELOW.**

CENTRAL TRACTOR FARM & FAMILY CENTER

CHAMBERSBURG
1351 Lincoln Way East Ph 717/264-8282
Open 9-6 Mon-Thur / 9-9 Fri / 9-5 Sat

LANCASTER
1570 Manheim Pike Ph 717/569-0111
Open 8:30-5:30 Mon-Fri / 8:30-5 Sat

QUAKERTOWN
Quakertown Plaza Shopping Center
Rts 309 & 313 Ph 215/538-2494
9-6 Mon-Wed / 9-9 Th & Fri / 9-5 Sat / 12-5 Sun

FLEETWOOD
WEAVER'S HARDWARE CO
RD 4125 Fleetwood PA 19522
(on main road from Fleetwood to Topton)
PH 215 944 7486 - 215 944 9648
Hours Mon thru Fri 8 AM to 7 PM
Sat 8 AM to 4 PM

All items are subject to stock on hand We reserve the right to limit quantities Sale ends on above date
Not Responsible For Printing Errors