

Pa. Farm-City Week

(Continued from Page B14)

Having entertained quite a few tourists in her farm restaurant, Betty has often observed first hand the lack of knowledge about the farm community. She cited an example of a New York City woman who could not understand why the Groff's had only 24 bulls for 35 cows.

"We've got to keep that communication line open," she said, driving her point home. "It's time

we show them that we're not that backward."

Other farm-city week events in Lebanon County included a mall promotion at Lebanon Valley Mall, senior citizens' farm tour, farmers' tour of industry, a business people tour of farms and a closing farm-city banquet.

Other counties across the state will be having similar activities during the coming week, Nov. 16-22.

Berks Co. Council plans dance

LEESPORT—The Berks County Council will be holding a dance from 8 to 11 p.m. on Saturday, Nov. 24 at the Berks County 4-H Community Center.

Tickets will be available at the door. Tickets for adults are \$2 and \$1 for children. Music will be by "Daybreak." The public is invited to attend.



Pennsylvania commodity queens attended the Farm-City luncheon to remind guests of the abundance of the state's agricultural products. Here they pose with Betty Groff, a Lancaster County native who operates Groff's Farm Restaurant. From left they are: Pa. Candy Queen Nancy Hartz, Pa. Potato Princess Melaine Lyter, Pa. Poultry Queen Jacki King, Betty Groff, Pa. Mushroom Queen Angela DeProspero, Pa. Dairy Princess Lynette Loper, Adams Co. Apple Queen Missy Showers and Alternate Dairy Goat Youth Representative Sue Miller.

We Specialize In Aerial Work Using Our Twin Bucket Boom Truck

Extends To 55 Ft

ELECTRICAL CONTRACTING

Specializing In **AGRICULTURAL WIRING**

Also Residential Industrial And Commercial Work
Free Estimates

C. M. HIGH CO.
320 King St
Myerstown, PA 17067
Phone 717 866 7544

We Have Poles In Stock 25' 30' 35' & 45'

LONG JOHN BALMER INSULATION

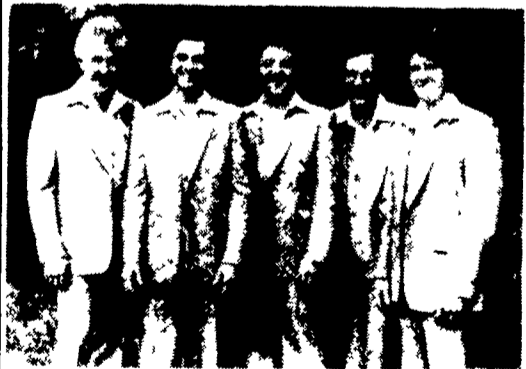
Full Warranty On Insulation For Life Of Structure

- Fully Insured
- Free Estimates

We Can Do The Job Now

RD 5, Box 61-D
Manheim, PA
(717) 665-4132

SHINDIG IN THE BARN PRESENTS:



The Bluegrass Cardinals

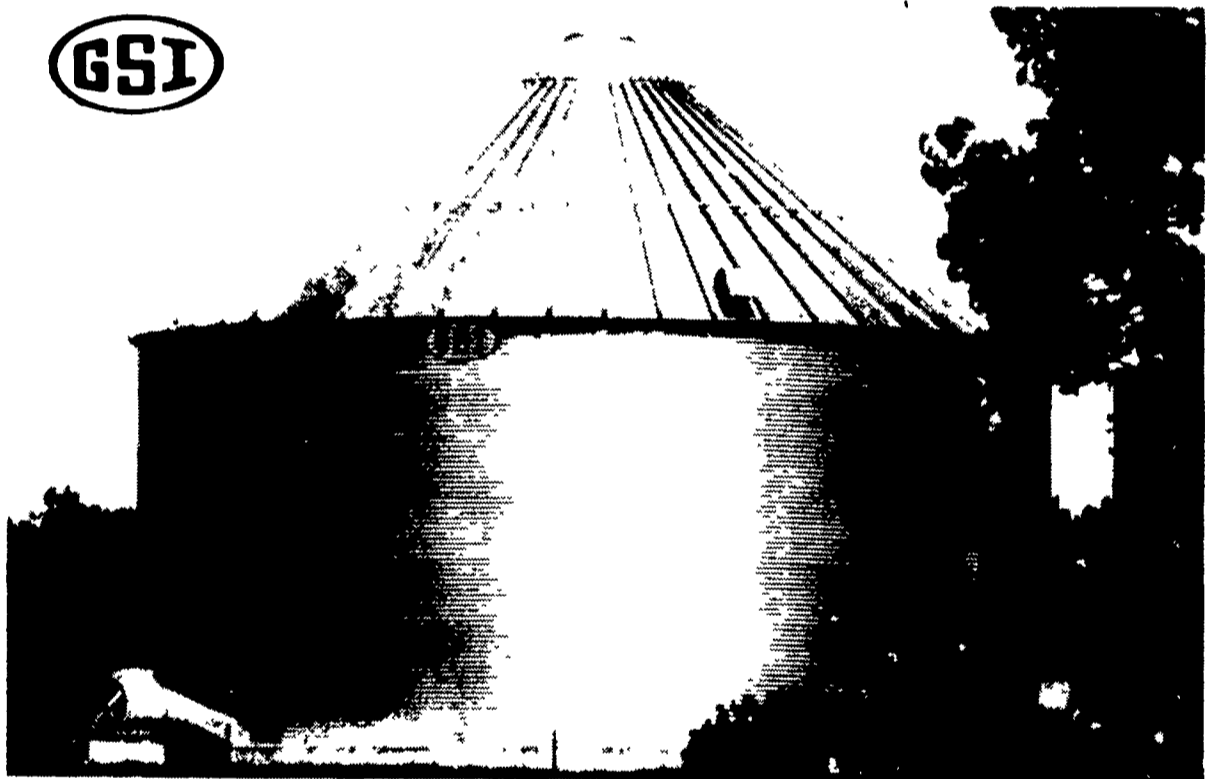
BILL HARRELL & THE VIRGINIANS
and

THE BLUEGRASS CARDINALS
SATURDAY, DEC. 1st

Show Time 8 P.M. - Doors Open 6:15 P.M.
Adults *6..... Children 12-6 *3
Under 6 FREE Tax Included
Held At The Guernsey Barn 5 Miles East of Lancaster on Rt. 30

COMING DEC. 15th
The Lewis Family
and
Doyle Lawson & Quicksilver

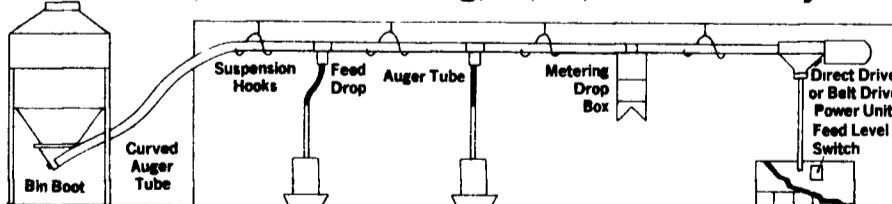
EMHERR YOUR FACTORY WAREHOUSE FOR ALL GRAIN EQUIPMENT



YOUR AUGER HEADQUARTERS FOR:

- Auger Flighting
- Bearings
- Motor Mounts
- Motors
- Flex Down Spout
- Tubing
- Belts
- Hoppers
- Chain
- Pulleys

Flex-Auger Systems, PVC Tubing, 2", 3", 4" Diameter Systems



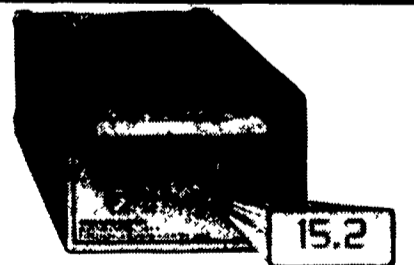
GSI Feed Bin



AIRSTREAM



AERATION and DRYING EQUIPMENT



Digital Read-Out Grain Tester
\$139.95

Also Available:
USED GRAIN EQUIPMENT
From Dryers To Augers
To Bin Parts

★ FULL LINE PARTS DEPARTMENT

★ WE SELL, SERVICE & INSTALL

EMHERR EQUIPMENT, INC.

RD 1, Rt. 272 S., Herrville Rd., Willow Street, PA 17584

Phone 717-464-3321 or Toll Free: 800-732-0053

Serving the Industry For Over 25 Yrs.