

# York farmers

(Continued from Page B14)

markets since 1952. Tuesday, Thursday and Saturday, as early as 4 a.m., they're unloading at the downtown Central Market, while Friday means a full afternoon and evening of sales at the Eastern market.

Fresh meats, from home-raised cattle right off the feedlot, are prepared year-round at the

modern processing facility adjacent to the barns. One of Twin Pine's customer favorites is their own honey-sweetened bologna, also marketed to a limited number of Lancaster retailers.

Seasonal produce covers the spectrum of locally-grown items, with potatoes, sweet corn, tomatoes, cantaloupes and melons all moved from field to market in hours. The pear orchard, and a more recently planted plot of

peach trees, add fruits to the array of farm-fresh offerings to market shoppers.

In addition to the produce crops, the Ilyes' raise hay and grains for feedlot use, and just recently acquired a hog production facility.

Truly a family farm, the production and sales staff at Twin Pine includes Ilyes and his wife Jeannine, sons Robert Jr., Dennis and his wife Neta, and daughter

Deanna.

Angus cattle, in all sizes, are the center of attention at the Dave Sprengle III farm at Spring Grove R4.

Crops grown on the 160-acre general farm are alfalfa, mixed hay, corn, wheat and barley. Bulk of the crop production goes into feed rations, with extra yields over needs for the cattle sold on the open market. Forages are utilized both as sealed-unit haylage and round-bale dried hay. "Big bale" handling equipment on display in fields near the feedlot should be of special interest to visitors.

The Sprengle's breeding herd consists of 38 brood Angus cows, 15 heifers and a half-dozen calves. Steers of various sizes are being grown and finished in the feedlot area.

An afternoon of "horsing around" is planned at Woodberry Farms, an equestrian art teaching center, with more than two dozen horses.

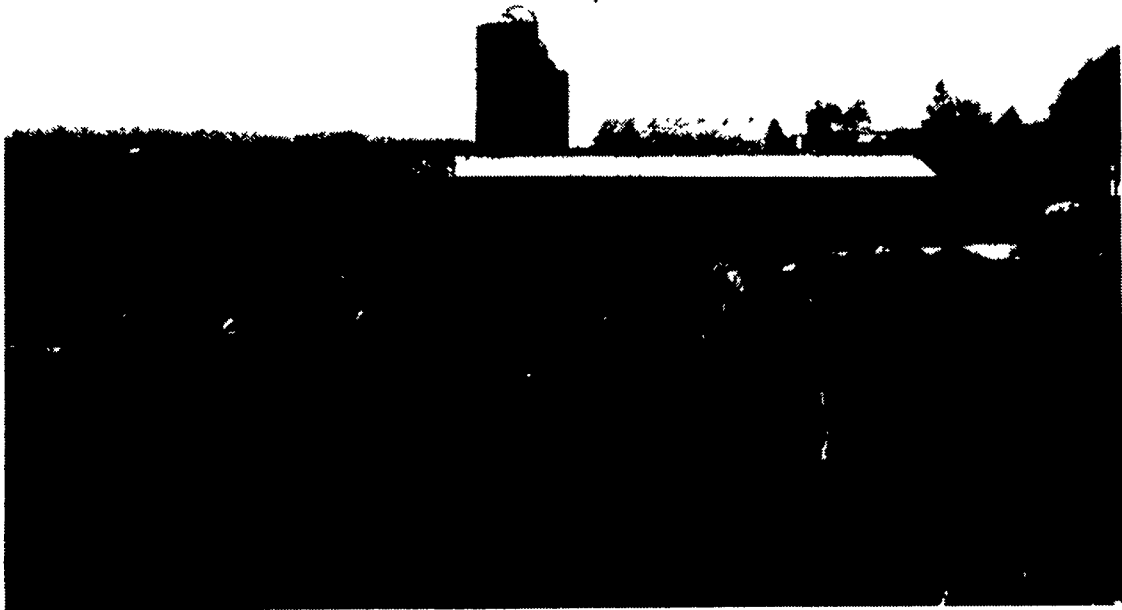
Owners of the York R10 farm are Mr. and Mrs. Paul Gilbert, while their daughter and son-in-law, Chris and Paul Hurlbert, have operated the riding instruction school for seven years.

Equestrian instruction specializes in hunter and hunter seat equitation, with classes ranging in skill from very young beginners, through advanced juniors using both ponies and horses, and up to lessons for adults in both pleasure and competitive riding.

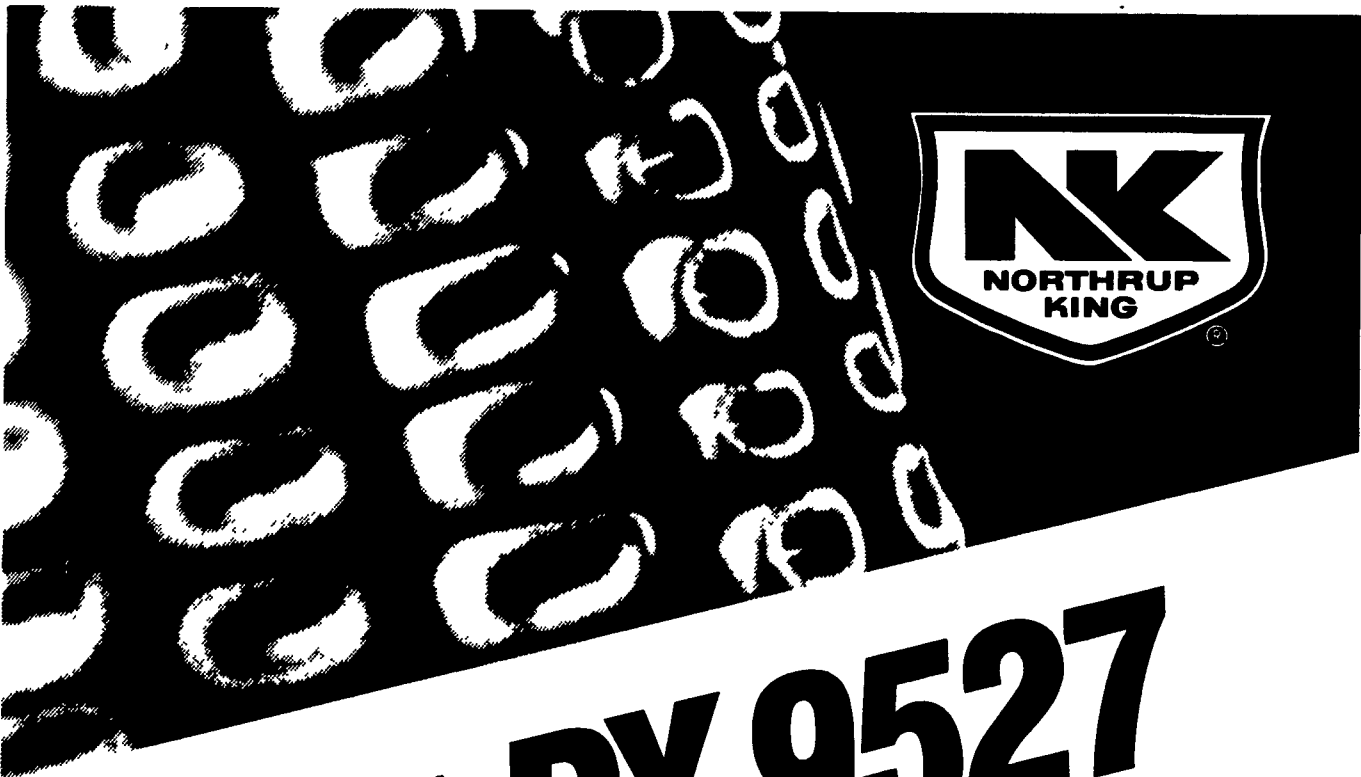
Chris Hurlbert, in charge of the equestrian program, has planned an afternoon of continuing demonstrations, with her students practicing their skills in various phases of competition horsemanship.

Show preparations will focus on clipping, braiding, and the measuring of horses, a "finished" display, with animals clipped and braided, and a rider dressed in the full competition attire, and riders actually performing the various functions that are part of ring competition.

All farms taking part in the Farm-City tour will be open to the public from 1 through 4 p.m. There is no set order in which farms must be seen; tour participants travel in their own vehicles and stop at their leisure, and may view as few or as many of the individual farms as they choose.



Stump Acres top-producing registered Holstein herd is a main attraction at the Joe and Glendora Stump family's dairy production and raw milk retail outlet facilities.



**NK'S GIVING YOU A GREAT REASON TO THINK BIG:**

# PX 9527

A yield winner—that's PX9527. Took 2nd place, nationally, in 1983 NCGA competition and at the 1984 Moorefield, WV trial, PX 9527 came through with 196.8 bu/A @ 29,000 population. This is a fine single ear for those aiming at top yields, producing a medium plant with low ear placement. You'll like the small cobs and fast drydown. See your Stanford dealer for NK performance data from your area. You'll discover a lot of very good reasons to think big. Other high-performance hybrids for this area:

**PX79.** A dependable producer in these parts. Resists the virus complex, southern corn leaf blight and has tolerance to anthracnose. Good standability, dries down fast, for steady, big yields.

**PX39.** High yielding, strong standing hybrid. A big winner in NCGA competition in 1983. Excellent for grain or silage with tall, robust plants and large ears. Fast drydown.

NOTE: Seed performance can be affected by many factors beyond our control. The limitation of warranty and remedy on the label or tag of each bag of seed are conditions of sale.

**Stanford Seed**  
Muddy Creek Rd. R.R. #1  
P.O. Box 320  
Denver, PA 17517  
(215) 267-3805

**Northrup King.**  
Now the corn to plant.

Now is the TIME to think about your garden and lawn equipment, that is, if you want to save MONEY.

25 Tools & Attachments Available



# Tuff-bilt

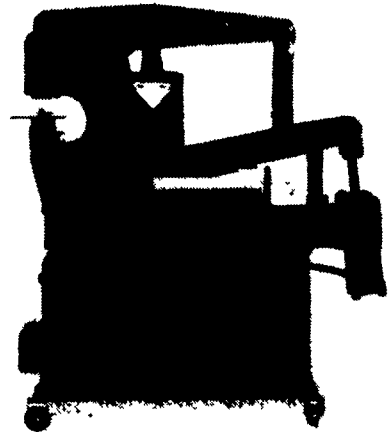


**ALLEN H. MATZ, INC.**  
505 E. Main St., New Holland  
Ph: 717-354-2214  
SERVING THE COMMUNITY  
THIRTY-FIVE YEARS

LANC. CO'S OLDEST FORD DEALER

# Scotchman

HYDRAULIC IRONWORKERS  
NEW MODEL 4014-C



**Standard Features:**

- punch 40 ton, 6 inch throat
- angle shear up to 3x3x5/16 inch, miter up to 2x2x5/16 inch to 45°
- bar shear 14 inch blade length
- 3 HP, 220/440 volt, 3 phase electrics

Ask For **DAVID S. KING AT: WILHELM'S HARDWARE**

Toys - Housewares - General Hardware

18-20 So. Railroad St., Myerstown, PA 17067

**PH: (717) 866-5394**

Store Hours: Mon.-Sat. 7 AM - 5 PM