

# Rothrock Golden Opportunities Sale

BY WENDY WEHR

**KEMPTON** — The "best of the breed" were offered, and Holstein breeders and investors didn't pass up the "golden opportunity." The sale average surpassed \$20,000 at the conclusion of the Rothrock Golden Opportunities Sale, held at the Rothrock Golden Holstein Farms, Kempton, Saturday, Nov. 10.

Of the 70 choice Holsteins offered to investors from around the world, all sold for at least four-figure prices, and the most valuable consignment brought six-figure money.

The bidding began with the Valiant son of Northcroft Ella

Elevation, the All-American, All-Canadian, 3E-97 cow, whose national fame is undisputed. Woodbine Farm, Airville, and Romandale Farms, Unionville, Ontario, consigned this treasure to the Rothrock classic.

And the auctioneer's gavel came down with a final bid of \$300,000 for Ella's son, the 11-month-old Woodbine-K Valiant Eddie-ET. The Golden Opportunities Syndicate, Sun Prairie, Wisc. made the historic purchase.

The Bova son of Long-Haven Wayne Stephanie, the only other male to be offered to the bidders on Saturday, brought the second highest price of the sale. The well-

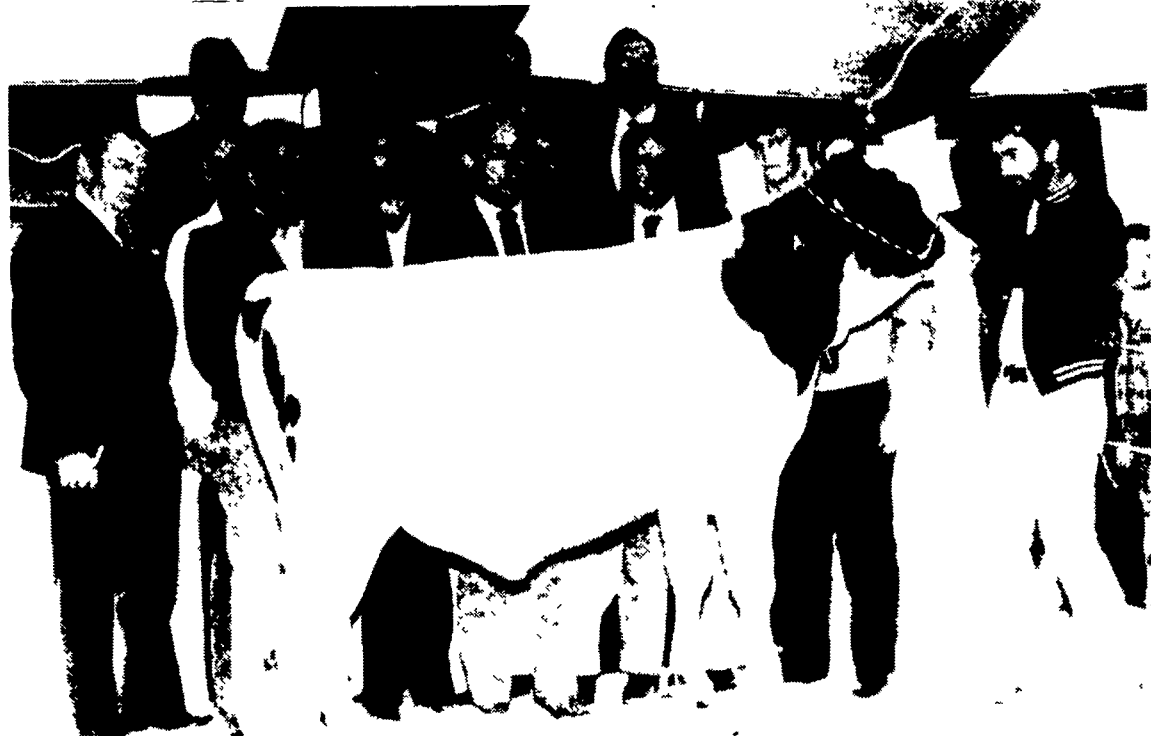
known Stephanie cow, with a +2325 index, has an outstanding 51,765 pound milk record with over 2000 pounds fat. G. Carlos and Doug Long, of Clayton, Mich., consigned Stephanie's son.

A Japanese syndicate, Hokkaido Livestock Import Association, Sapporo, Japan, laid \$75,000 on the table to take the Stephanie son, Long-Haven Super Steffin-ET, across the Pacific.

The high selling female of the day was Pretz Golden Bambi-ET, daughter of a Mars-Tony and Bambi cow match-up. George W. Pretz, Osawatomie, Kan., offered the two-month-old heifer calf, and Rothrock Golden Holstein Farms



Top-selling female at the Rothrock national consignment sale was a Bambi Pretz Golden Bambi-ET. Rothrock Golden Holstein Farms paid \$80,000 to Kempton. Pictured are, from left, Jack Miller, Rothrock manager; Bruce [unclear] holding a picture of the dam; Jay Howes, of Backus Associates; [unclear] tender; George W. and George C. Pretz, consigners; and Horace Backus. In [unclear] Les Hosking, Mike Weimer, and Charles Backus.



The auctioneer's gavel dropped at \$300,000 for Ella's son, Woodbine-K Valiant Eddie-ET. This was the top bid at the Rothrock Golden Opportunities Sale, held Saturday, Nov. 10, at the Rothrock Farms, Kempton.

bid \$65,000 to keep her in Kempton.

The outstanding qualities of the 3E, 96-Gold Medal Bambi cow are known to breed through to her daughters. Two maternal sisters of the ET that was purchased by Rothrock on Saturday are ranked 22 and 58 on the Super Cow list.

Two other females went for more than \$50,000 during the sale. Poverty-Hollow Margaret-ET, Rothrock Farms' top consignment to the sale, sold for \$59,000 with a guarantee of six transferable eggs from a Mars-Tony service.

The 2E-91 Margaret had a 29,970 pound milk record at four years and eight months of age. Her impressive pedigree includes a 2E-95 maternal sister, a 2E-92 Gold Medal dam, and a 2E-94 Gold Medal granddam.

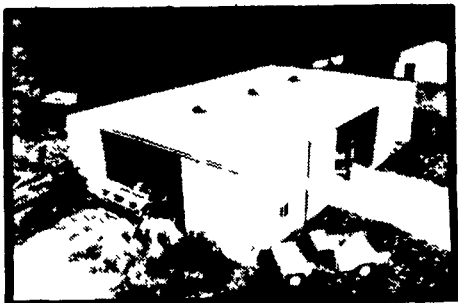
And a Pen-Col consignment brought \$51,000 from the Deena Decoration Syndicate, Frankfort, Ky. The 19-month-old Pen-Col Jetson Decoration-ET, the Jetson daughter of Pen-Col Wayne Deena, sold with two Valiant pregnancies. Her maternal pedigree boasts

three pounds. With of \$22, obvious the Ho manag Holster animal of the of over In in of the Associ

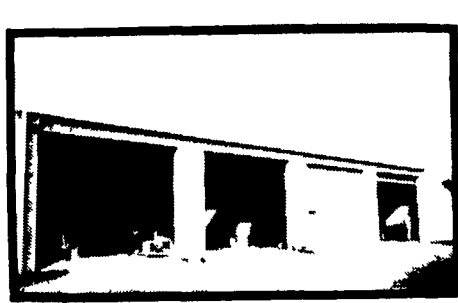
BUILDINGS BY



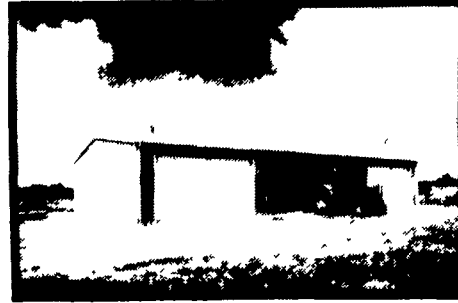
SEE BEFORE YOU BUY



FARMSTED® II



SHOP - STORAGE - GARAGE



AG-MASTER® 2:12

**FREE ESTIMATES**  
See A Butler Building Before You Buy

## BUTLER SPECIAL PRICE PROGRAM

Which Includes All Farmsted And Ag-Master Buildings

See Your Agri-Builder For Details

**Bethlehem** 20 YEAR WARRANTY GALVALUME MATERIAL

NOBODY BUT BUTLER

BUTLER IS ONE OF THE BEST BUILDING DEALERS

SAVE MONEY

LIMITED TIME OFFER

BUTLER MFG. CO.

Attn P E Hess  
P O Box 337 Oxford PA 19363

Dealer Inquiries Available in Pennsylvania Counties Lancaster Schuylkill Armstrong Indiana Erie Crawford Warren Elk Cameron McKean Clinton Lycoming Sullivan Wyoming Luzerne Columbia Bradford Susquehanna Adams Cumberland York Potter Tioga New Jersey Counties Sussex Morris Passaic Atlantic Cape May Monmouth Middlesex Somerset Maryland Counties Talbot Dorchester New York Counties Orleans Genesee Monroe Livingston Allegany Steuben Yates Seneca Cayuga Tompkins Schuyler Tioga Chemung Broome Chenango Madison Lewis Oneida Herkimer Fulton Montgomery Otsego Delaware Schoharre Sullivan Orange Ulster Greene Chautauqua Cattaraugus

No Dealers Fees

Name \_\_\_\_\_

Address \_\_\_\_\_

County \_\_\_\_\_ Zip \_\_\_\_\_

City \_\_\_\_\_ State \_\_\_\_\_

Phone \_\_\_\_\_

(Include area code)

LF

C & M SALES INC.  
R D #1  
Honesdale, PA 18431  
PH 717-253-1612

NAZARETH BUILDING SYSTEMS, INC.  
P O Box 47  
Nazareth, PA 18064  
PH 215-759-1331

LEROY E. MYERS, INC.  
Route #1, Box 163  
Clear Spring, MD 21722  
PH 301-582-1552

O. A. NEWTON & SON CO.  
Bridgeville, DE 19933  
PH 302-337-8211

D. E. SMITH, INC.  
Mifflintown, PA 17059  
PH 717-436-2151

TRI-COUNTY AGRI-SYSTEMS  
R D #1, Box 55  
Swedesboro, NJ 08085  
PH 609-467-3174

GOMPFF CONSTRUCTION CO. INC.  
1841 Jerry's Road  
Street, MD 21154  
PH 301-692-5350

MATTSON ENTERPRISES  
1605 Mt Hope Road  
Burlington, NJ 08016  
PH 609-386-603