

Cumberland

cites top

DHIA

members



Norman Hertzler and Nevin Shughart were recognized as having Cumberland County high production herds at the Cumberland County Dairy Herd Improvement Association annual meeting. Norman Hertzler, second from Right, 270 Stoner Road, Mechanicsburg, whose 35 Registered and Grade Holstein cows produced and averaged 20,292 lbs. of milk and 661 lbs. of protein, received high herd in milk and protein honors. Nevin Shughart, Second from Left, 1012 Baish Road, Mechanicsburg, received recognition for high herd in butterfat production. His herd of 30 Registered and Grade Holsteins produced an average of 722 lbs. of butterfat. Shown with Norman and Nevin is Samuel Shenk, President of the Cumberland County DHIA and Vonda Wickard, Cumberland County Dairy Princess.

Marlin E. Miller & Sons, M. Thomas Sheaffer and Norman Hertzler were recognized for having Individual high cows records at the Cumberland County DHIA Banquet. Michael Miller, Second from Right R3, Carlisle, received the high cow in milk production award for cow #60 who produced 30,587 lbs. in milk this year. M. Thomas Sheaffer, center, R5, Carlisle, received the high cow in butterfat production award. Tom's Huntsdale Ginger Astronaut, produced 1024 lbs. of butterfat at age five. Norman Hertzler, Second from Left, 270 Stoner Road, Mechanicsburg, received the high cow in Protein Production Award. Norman's Moo-Echo Ivanhoe Star Silver record of 919 lbs. of protein was high for the county. Samuel Shenk, President of the Cumberland County DHIA and Vonda Wickard, Cumberland County Dairy Princess are shown with the award winners.



The Cumberland County DHIA Greatest Increase in Production Award went to Glenn W. Myers, R1, Box 53, Newburg. William Myers is shown receiving the award plaque from Cumberland County Dairy Princess Vonda Wickard as DHIA President Samuel Shenk looks on.

Bee study increased

WASHINGTON, D.C. — U.S. Department of Agriculture scientists stepped up research in southern Texas on ways to eradicate, control or limit the spread of a parasitic mite dangerous to honey bees, a USDA research official said today.

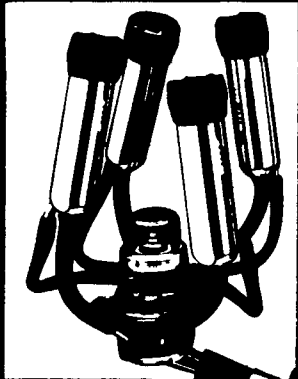
Terry B. Kinney, Jr., Agricultural Research Service administrator, said bee specialist William T. Wilson began a four-month assignment at Weslaco, Tex., near the area in the Rio Grande Valley where the mites, *Carapis woodi*, were first discovered in July. Inspectors for USDA's Animal and Plant Health Inspection Service found the mites in a bee colony near the Mexican border.

Wilson, lead scientist at the agency's U.S. Honey Bee Research Laboratory in Laramie, Wyo., will determine research strategies to use against the mite.

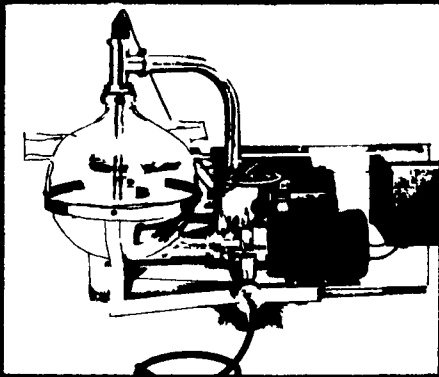
At the same time, Kinney said, in cooperation with the research agency's Bioenvironmental Bee Laboratory at Beltsville, Md., bee scientist Alfred Dietz of the University of Georgia will seek to develop treatments for queens and packaged bees to ensure they are free of the parasite.

In surveys after the July discovery, USDA inspectors found the mites at five other Texas locations and at bee apiaries in Nebraska, South Dakota, New York, Florida and Louisiana. State agencies and USDA's animal and plant inspection service placed quarantines on the movement of bees from those sites.

NuPulse's Harvest PIPELINE SPECIAL



THREE NUPULSE UNITS



DELUXE GLASS RECEIVER GROUP

Reap the Savings on this **PACKAGE DEAL \$4995**

HERE'S WHAT YOU GET...

1. THREE NUPULSE STANDARD MILKER UNITS.
2. 200' SS 2" PIPE AND FITTINGS FOR 40 COWS.
3. AUTOMATIC PIPELINE WASHER WITH ELECTRIC DRAIN AND DIVERTER VALVE.
4. DELUXE GLASS RECEIVER GROUP.
5. NUPULSE VACUMASTER REGULATOR.

SALE PERIOD From October 22 through November 30, 1984
 TERMS: 10% down with signed order no later than midnight November 30, 1984.
 INSTALLATION: Must be completed no later than 60 days from date of signed order. Installation costs and stanchion supports are not included.

FREE! Nu Pulse Insulated Jacket with each order

SEE THESE PARTICIPATING DEALERS NOW!

Abe Hostetler
 Abe's Service Center
 R.D. 2, Box 82
 Mifflinburg, PA 17844
 (717) 966 1707

Amos Fisher & Rick Thomson
 Fisher & Thompson Assoc
 21 E. Woods Drive
 Lititz, PA 17543
 (717) 627 1530

Northampton Farm Bureau Coop Assn.
 300 Bushkill Street
 Tatamy, PA 18085
 (215) 258-2871

If there is no dealer in your area, contact:

Curt Cassady
 NuPulse Sales Manager
 519 Golden Street
 Lititz, PA 17543
 (717) 626 1065

Max Crider
 Crider Dairy Equipment
 8933 Rowe Run Road
 Shippenburg, PA 17257
 (717) 532 8517

Bill Lucas
 Lucas Barn Equipment
 R D 2, Box 339D
 Bellefonte, PA 16823
 (814) 383 2806



National Headquarters, NuPulse America, Inc.
 908 Stewart St., Madison, WI 53713
 (608) 274 2722