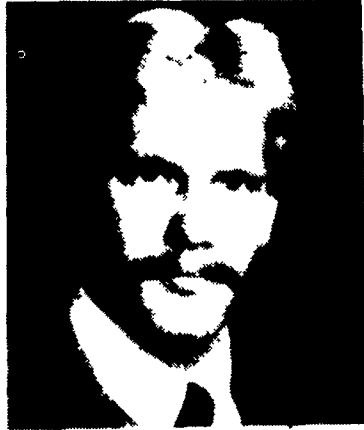


Smith gets Atlantic post

LANCASTER — Thomas Smith, of Annville, has been named to assist in young sire procurement for Atlantic Breeders Cooperative, according to Harry Roth, Operations Director. Smith's duties include evaluating potential contract-mating cows and ET bull calves for possible addition to Atlantic's young sire sampling program.

About 55 new young sires with high pedigree potential are added each year for progeny testing in herds owned by Atlantic members. Roth says Smith will also work in the Cooperative's Linear-Mate herd evaluation and sire selection



Thomas Smith

program to help dairymen use proven sires most effectively.

Smith graduated earlier this year from Delaware Valley College at Doylestown with a bachelor of science degree in dairy husbandry. He received DVC's Dairy Shrine Award this year and in 1983 won the Dairy Husbandry Junior Achievement Award.

He grew up on his family's (Robert Smith) Lebanon Valley Guernsey Farm and helped care for their 65-cow herd. Smith was named the District Outstanding Guernsey Youth last year. His activities have included fitting, showing, and judging dairy cattle.

Grange Master coming to Del.

DOVER, Del. — Edward Andersen, Master of the National Grange, Washington, D.C., will be in Delaware for the two-day 110th annual session of the Delaware State Grange, Dec. 4-5. Andersen will speak to the Grange Session on Dec. 4, in Midland Grange Hall, Georgetown, where the meetings will be held. He will also speak at the annual Session Banquet, Dec. 5 at 6:30 p.m., in Cape Henlopen High School Cafeteria, in a Town Forum session with questions from the audience.

Andersen was elected Master of the Grange in 1979. He had served several years as Master of the Nebraska State Grange and as Overseer (Vice - president) of the

National Grange, the nation's oldest and second largest general farm organization. A former dairy farmer, he served as president of the Nebraska Highway Users Federation and secretary-treasurer of the Nebraska Agriculture Council. He was a member of the National Beef Development Task Force and Beferendum Committee, and chairman of the National Farm Coalition. He was recently appointed by the president to the special Farm Export Commission.

People interested in hearing Andersen may get banquet tickets from any local Grange lecturer, or from the State Grange Office, 911 S. Governors Ave., Dover, DE 19901; phone: 734-4653.



Edward Andersen

OUR READERS WRITE, AND OTHER OPINIONS

Dairy promotion

Dear Editor:

While reading the September 22, 1984, issue of "Lancaster Farming", I saw the article on dairy commercials, page A 12, I've now seen several of those commercials on television, and I've been struck by their attractiveness. However, I do think they may be missing the point.

Consumers need to be encouraged to buy and use more dairy products, so why doesn't the National Dairy Promotion Board offer dairy recipes for those delicious looking foods at the end of each advertisement? To take the idea one step further, why not offer dairy savings coupons (10 cents or 20 cents or 25 cents off on milk, butter, cottage cheese, cream cheese, sour cream, etc., etc.? This could be especially appropriate with the holiday season approaching! Of course, consumers would have to submit a self-addressed, stamped envelop to reduce postage costs, but what a bonanza for dairymen.

I'm certain you'll say this better than I ever could, so please foster the idea along.

Sincerely yours in service to farmers.

Jeanne M. Urban
Clearfield, Pa.

Dear Ms. Urban:

You said it just fine.

Now is the Time

(Continued from Page A10)

prepared for delicious fruit from your planting.

To Beware of Anti-Freeze Poisoning in Dogs

An increasing number of people are doing their own automobile, truck and tractor maintenance. This may include draining and changing the anti-freeze. If you are among this group of home mechanics, a word of warning is advised.

Our Extension Veterinarian tells us that dogs find the sweet flavor of anti-freeze solutions very tasty. Beware! Ethylene glycol, a chief ingredient in anti-freeze, is extremely toxic to dogs, causing severe kidney damage. Never leave open containers of automotive coolant lying where a dog might find and drink from them. If your car, truck or tractor leaks coolant or the radiator overflows into the driveway, clean the spill and dispose of the soaked towels properly, so your own or your neighbor's dog cannot inadvertently harm itself.

The Extension Service is an affirmative action, equal opportunity education institution.

CHORE-TIME

CHORE-TIME

**hopper-bottom bins
for feed storage**



NOW

**FACTORY DISCOUNTS
ON CHORE-TIME BINS**

The Quality Is The Same... The Prices Are Lower!

CHECK THESE FEATURES:

- **BIN LID** has 24-inch diameter, is formed from one piece of steel for maximum rigidity and warp-resistance — to keep it weatherproof. Big 22½-inch opening means less feed waste.
- **BIN LEGS** are formed from heavy, all galvanized steel to make a girder-like structure with 6 separate bends or "breaks". Formed leg gives superior fit, finish, and durability over that provided by other types.
- **ALL BIN SEAMS** are double caulked with non-hardening sealer for maximum weather protection.

- **TO HELP YOU** get the long life and full depreciation you want from your investment, all metal parts are fully galvanized for maximum rust resistance.
- **CHORE-TIME'S FULL ONE-YEAR warranty** (we'll provide a copy on request) against any product defect is another valuable feature you get with every Chore-Time bin.
- **CHORE-TIME OFFERS** your choice of 16- or 25-inch diameter hopper openings for greater versatility in application.

**SIZES AVAILABLE FROM
2.9 TON to 52 TON - 6' 7" & 9' DIAMETER**

**COMPLETE SYSTEMS, EQUIPMENT,
SALES, INSTALLATION,
SERVICE FOR CATTLE, HOG,
POULTRY AND GRAIN**

STORE HOURS:
Mon.-Fri. 7:30 - 4:30
Sat. 7:30 - 11:30
(Parts Only)

Authorized Chore-Time Distributor

AGRI-EQUIPMENT, INC.

2754 CREEK HILL RD., LEOLA, PA 17540
(Lancaster County)
PH: (717) 656-4151