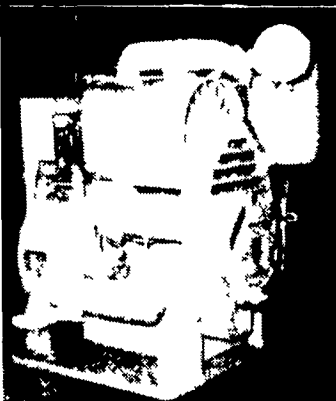


**Save This Ad!
For Used Tractor Parts
1-607-642-8688**

Used Parts in Stock For:
AC: B, C, CA, WC, WD, 170
Case: VAC, SC, DC, LA, 200, 300, 400,
500, 600, 700, 800, 430, 530, 630,
730 CK, 930 CK, 1030 CK, 770, 870
310
Ford: 8N, 9N, JUB, 600, 800, 900, 2000,
4000, 5000, 6000, 8000
IHC: B, A, C, H, SH, M, SM, SMTA, 240,
340, 300, 350, 400, 460, 656, 674,
684, CUBS, 3616, W-4, W-6, W-9,
806
JD: 1020, 2010, 1010, 430, 40, B, A,
MC, SO, 60
DB: 1200, 990, 880
MF: 85, 65, 50, 30, 20
MH: Pony, 44, 33, 30
Oliver: 1750, 88, 66, OC 3, 1850
Several Cockshutts, M. Harris, Others
Tractors Arriving Weekly
Used tires of all sizes
Parts Locator Service

ED GOODRICH, Jr's Rt. 38 & 38B
Newark Valley, NY
Tractor Parts Co. 607-642-8688

REPOWER SPECIALS



DEUTZ
F2L-410 Used 2-Cyl.
diesel engines for sale.
Running condition.
Warranty limited to
exchange for another
like engine if not
satisfied.
14 Hp @ 1800 RPM
20 Hp @ 2500 RPM

With: Starter, Gen, Air Cleaner, Manifolds, Flywheel, Fuel
Pump, Filters, and Deep Oil Pan. Approx. New Price \$2600

(Not actual photo)

Price
Each **\$550**

Stauffer Diesel Inc.

New Holland, Pa. 17557 (717) 354-4181



USED EQUIPMENT

For Rent Or Sale
MF 750 Dsl., Will Trade
Gleaner Mod. M Dsl. 1975
w/JD 643 C.H.
w/Bean & Corn Heads,
Gleaner Mod. K
(2) Gleaner Mod. E's

Used Uni Parts
Gear Boxes, Final Drive Units, Etc.

MF 1085 Dsl. w/Cab & Air
Farmall 806 Dsl.
Farmall 1066 Trac. w/1700 Hrs.
Oliver 1655 D
Oliver 1855 D., w/Year Rd. Cab, \$6,500
Oliver 1850 Gas
737 Husker for Uni
1144 C.H.
Uni 705 Dsl. w/800 Hrs.
MF 63C C.H.
MF 16' Table w/Soybean Bar
MF 1163 ~~SOLD~~ w/200 Acres
NI 2R 30" Picker
NI 729 A Sheller w/741 Fast Tash Throat
NI 744 W Corn Head
NI 717 Combine

RAYMOND B. LEAMAN

Willow Street RD 1
Ph: Lancaster 717-464-2778
Midway between Lancaster & Quarryville
off Rt. 222 take Brenneman Road
at Graybill Bros. Garage, Refton.

on HIGH Quality Batteries

GIANT TRUCKLOAD SALE

PARTS VALUE OF THE MONTH

IHCMI 6 Volt, Fits Most Older Tractors, A.C. H. etc. New Extended 36 Month Warranty
List \$51.70
NOW ONLY **\$36.53**

IHCMI 4DLT Fits Many Fords And Deutz Tractors 750 Cold Crank Amps 280 Reverse
List \$128.67
NOW ONLY **\$93.40**

IHCMI 245 Heavy Duty Group 24, 60 Month Warranty In Cars. Also First 66 Series Tractors
List \$84.50
NOW ONLY **\$45.29**

IHP35EH H.D. 6 Volt Long, Narrow Battery, For 966 & Many Other Brands & Models.
List \$68.95
NOW ONLY **\$56.46**

FALL SPECIALS

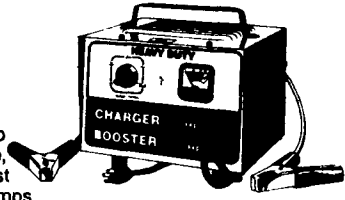
- Wisconsin VH 4D, 30 H.P., Bobcat 610 Replacement **\$1795⁰⁰**
- Wisconsin VH 4D, 30 H.P. w/Clutch Reduction Crankstart **\$1950⁰⁰**

FISHER ENGINE SERVICE
3141 Old Philadelphia Pike
BIRD-IN-HAND, PA 17505
(717) 768-3729

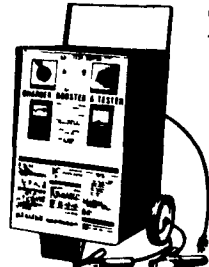
ELECTRIFYING SAVINGS ON CHARGERS

International battery chargers are rugged and built to last. We have the model that's just right for any job at low, low sale prices. Power ratings from 10 to 80 amps. Fast charge and booster models. Buy now. Save now!

30-amp battery charger
30-amp fast charge, 5-amp trickle charge, 200-amp boost
Insulated clamps
Special Price **\$115.95**



80-amp battery charger, booster, tester



Charges to 80 amps, boots to 300 amps. Tests alternators and batteries. Professional quality.

List Price \$269.95
Special Price ~~\$246.95~~

OUR PRICE ONLY

\$212.50

PLUS OTHER MODELS AT SIMILAR SAVINGS

ATTENTION: Call Us For Special Deals On Harvester Knives!

We Ship U.P.S. Daily

BOLTS BY THE POUND
Fill Up Your Bins
Save That Costly Trip

- Grade 5 Bolts
 - Nuts
 - Lock & Flat Washers
 - Carriage Bolts
- 1-2 lbs. **\$1.49** lb.
3-9 lbs. **\$1.39** lb.
10 or More Lbs. **\$1.29** lb.

MESSICK FARM EQUIPMENT, INC.

Farm Equipment Is Our Business
RHEEMS EXIT, RT. 283, ELIZABETHTOWN, PA.
Phone: (717) 367-1319, 653-8867 OR CALL TOLL FREE 1-800-222-3373 We Ship UPS



WISCONSIN HEAVY DUTY ENGINES
6-65 H.P.

- Wisconsin**
- VG 4D 37 HP w/Clutch Reduction **\$2295**
 - VH 4D 30 HP Electric w/Clutch Reduction . **\$2150**
 - TJD 18.2 HP NH Baler Repl. **\$925**
 - AENLD 9 HP w/Clutch Reduction. **\$975**
(Engines in stock to fit most popular skid loaders)
 - Wisc. - Robin
 - W1-145 3.5 HP **\$185**
 - EY 18-3W 4.6 HP **\$250**
 - EY27W 7.5 HP, Recoil **\$355**
 - EY27W 7.5 HP, Electric Start. **\$525**
 - EY27W 7.5 HP w/Pump Shaft. **\$360**
 - EY44W 10.5 HP, Recoil **\$475**
 - W1-390 11 HP, Recoil. **\$485**
 - Honda**
 - G100 2 HP. **\$195**
 - G150 3.5 HP **\$215**
 - G200 5 HP. **\$265**
 - G300 7 HP. **\$346**
 - G400 10 HP. **\$445**
 - Kohler**
 - K181 8 H.P. 6-1 Reduction. **\$550**
 - K301 12 H.P. Electric. **\$525**
 - Ford Industrial Short Blocks**
 - 300 CID Gas **\$750**

Authorized Service Center
• Complete Rebuilding • Large Parts Inventory

FISHER ENGINE SERVICE

3141 Old Philadelphia Pike
BIRD-IN-HAND, PA 17505
(717) 768-3729