

TRUCKS AND TRAILERS

NEED CASH? We buy unwanted trucks and parts, scrap aluminum of any kind. Wrecked dumps, vans, flats, tank trailers, etc. Call 215-944-9871 (evenings).

70 International CO181QA, 392, major overhaul March, 18' aluminum bed. All or will separate. 717-786-1882.

'77 Jeep pickup, J-20, 4x4, 360, 4 BB headers, 5th wheel ball. Needs body work, \$2,500 or make offer. 717-786-1882.

For Sale - New, Used Dump Grain Flats, Rollback Truck Bodies. Good selection of used trucks, combine and Lowboy trailers. 814-623-9696.

WANTED TO BUY

Dry lime spreader equipment. We are interested in spreader boxes with sower bar spreaders.

Also pup trailers, 2 & 3 axles, steel and/or aluminum.

If you have such equipment and wish to sell

Call

John C. Dagneau
c/o Atlantic Cement Co., Inc.
518-756-6141
or 518-456-0431

YES!! ENGLE DOES MAKE IT EASIER!!

1984 Ford LT-8000 — 225 H.P. Cat, 13 spd., 38,000 Rear, 16,000 Front, Ideal For Dump Truck - NEW!!

1984 Bronco 2, XLT, V-6, 4 Speed, 2 Tone Paint A Title

1983 4x4 Bronco — V-8, Automatic, All Power Equip., XLT, 14,000 Miles. Plus Many More Features.

1983 Chev. S-10 4x4 Pickup - 4 cyl., 4 spd., PS, PB, Long Bed, Only 15,000 Miles - MIGHTY MITE!!

JEEPS — 79 CJ-7 Hardtop & 1978 Jeep Cherokee Wagon, Quadra-Trac Automatic, 37,000 Miles, A Title.

1980 Ford Bronco 4x4 — XLT, Air, V8, Auto, 2 Tone Paint, Low Mileage

1979 Ford F-150 Super Cab 4x4, Air, 351 V8, Automatic, Trailer Towing package. One Owner.

In PA The Call's On Us 1-800-242-8075
Out of State Call 1-717-692-4841

ENGLE FORD, INC.

Rt. 147 North
Millersburg, PA 17061



- STRUCTURAL INTEGRITY
- QUALITY CONSTRUCTION
- DESIGN INNOVATION

E-Z DUMPER®



**DUMP UNIT FOR PICKUP TRUCKS
SAVE TIME...LABOR...MONEY**

DIRECT FROM
FACTORY
\$1,045

The E-Z DUMPER is hydraulically operated and is powered by the 12 volt truck battery. The safe removable key switch is standard equipment. The dump angle of 47° assures quick and clean unloading. The removable tailgate can be opened from the top or bottom for easy flow control.

Designed for do-it-yourself installation - the E-Z DUMPER comes ready to install, including hydraulic fluid. Most pickup trucks require no alterations. Just slide the E-Z DUMPER and secure with clamps using existing bolts and holes. Installation is fast and simple. Dump over 4,000 lb. of firewood, gravel, topsoil, coal, corn, mulch, etc. in seconds.

CALL TOLL FREE 1-800-248-6000
PA 1-800-842-4000

JERR-DAN CORP.
1080 HYKES ROAD, GREENCASTLE, PA. 17225

AVIS TRUCKS

YORK, PA
1116 Roosevelt Ave. (717) 848-6400

LANCASTER, PA.
1710 Rohrerstown Road (717) 569-2648

A FULL SERVICE LEASING COMPANY

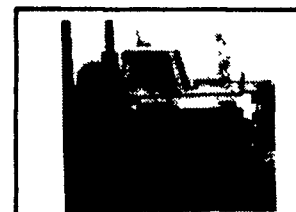
TRACTORS



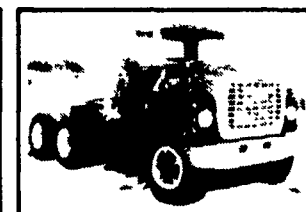
1978 Peterbilt 352586 T/A/D/S 148 WB NEW SILVER 8V92TT Eng w/Warranty 9 Spd P/S A/C AM/IFM



1979 Chevrolet D9L064 T/A/D/S 150 WB Formula 350 Cummins 9 Spd P/S A/C 10.00x20 tires Engine Overhauled Low mileage



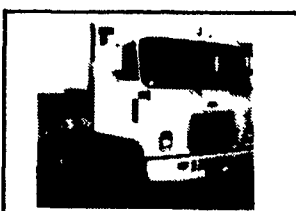
(2) 1978 Whites, Road Boss II, Tandem Axle Conv 143 WB Formula 290 Cummins 10 Spd P/S, 10.00x20 Tires Air Shield With or Without Overhaul



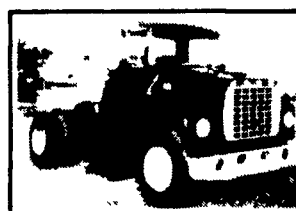
1978 Ford LNT-9000, T/A/D/C 150 WB 350 Cummins Eng 13 Spd Trans P/S A/C Hendrickson Susp NEW PAINT 88,000 Miles On NEW ENGINE



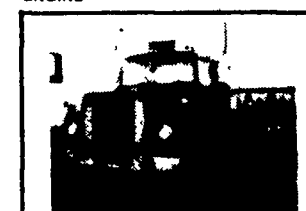
1978 Ford LN9000, S/A/D/C 150 WB 6.71 N Detroit, RT910 10 Spd Trans P/S A/C New Paint, Engine Just Overhauled



1979 Chevrolet D9L042, S/A/D/S 142 WB Formula 290 Cummins 10 Spd Trans P/S A/C 10.00x20 Tires 100 Gal Tanks NEW PAINT



1978 Ford LN9000, S/A/D/C 138 WB 6.71 Detroit (238 H.P.) 10 Spd Trans P/S, 10.00x20 tires, ENGINE OVERHAULED, NEW PAINT



1977 Ford LNT9000 T/A/D/C 150 WB 8V 71 N Detroit (289 H.P.) 10 Spd Trans P/S A/C 10.00x20 Tires NEW PAINT ENGINE RECENTLY OVERHAULED

STRAIGHT TRUCKS



1978 Ford F700, 16 Cab and Chassis CAT 3208 Engine 200 H.P. 5 Speed 2 Speed Rear 27,500 Lb GVW P/S 10x20 Tires NEW PAINT

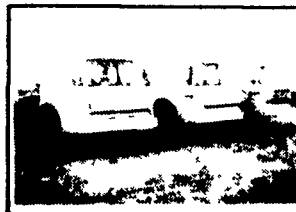


REEFER

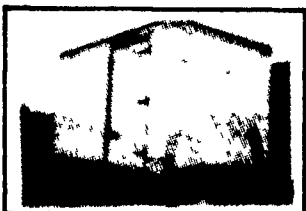
1971 Ford LN780; 18' Reefer, 391 V8 Eng, 5 Spd Trans 27,500 Lb GVW, 10.00x20 Tires, 18' Insul Body, Swing Rear Doors, C/S Door, Galvanized Lining, Ext Alum Floor, Thermo King, MWC50G w/Electric Stand by, New Front Tires & 75% Rear Tires



1980 & 1979 IHC CO1610B 16 Van 137 WB 392 V8 Eng 5 spd Trans, P/S 9.00x20 Tires 16 Morgan Body Overhead Rears Curb & Roadside Doors Trans Rebuilt New Paint, Engines Overhauled



1 1978 Ford C7000, 24 Cab & Chassis 27,500 GVW CAT 3208 (200 H.P.) 5 Spd Trans 2 Spd Rears P/S Engines Overhauled



1979 Morgan T386-12; 12 Aluminum Van Body, O/H Rear Door C/S Door, Slatted Interior

All equipment offers no known defects and is available for inspection and road test. Lifetime maintenance records are available for your review. All equipment exceptionally clean & well maintained. Our customers are completely satisfied with their fully reconditioned and recently inspected purchases.

**Other Makes and Models To Choose From
CALL FOR MORE DETAILS**



Stakeless Bodies by OMAHA STANDARD



Heavy gauge steel sides with deep corrugations for maximum strength. The stakeless is available with either 52" or 60" high sides and standard lengths of 18', 20', 22' and 24'. Greater inside width and length. Ideal for hauling grain, sugar beets, bagged or palletized products.

Rear options include two or three section full opening rear doors and automatic beet or silage gates.

Complete your "Grain Power" package with an Omaha Standard work-proven hoist. Choose from the most complete line of scissor or stabilized "Olympic" telescopic hoists. There's an Omaha Standard hoist for any size Omaha Standard stakeless body.

Compare any of Omaha Standard's full line of steel, aluminum or wood grain bodies and rugged hoists. You'll know why Omaha Standard is the most respected name at work on the farm today.

FARMERSVILLE EQUIPMENT INC.

RD 4, East Farmersville Road
Ephrata, PA 17522
Located in the Village of Farmersville,
Lancaster County
717-354-4271

Omaha Standard