

32 MISCELLANEOUS

Dusk collector with 5 HP motor, 3 phase. \$175. 2 1 5 - 5 4 2 - 7 9 8 0 . 215-646-9057.

Electric Yale crane truck K42 SH-6-7-78 maximum capacity, 6,000 lbs. \$2,500. 215-542-7980. 215-646-9057.

FOR SALE—Firewood debarked, hardwood bundles, 4x4x8'. Large quantities available. Dealers needed. Call Martin Mulch Products 717-733-1602.

FOR SALE—Locust Posts and dry fire wood. IMascot Rd., Ronks, PA 17572.

For Sale Casio 2302ER, four dept. cash register, 1 1/2 yrs. old \$400. Digi digital 30 lb scales with DP9100 printer with memory bank, 1 1/2 yrs. old \$1,900 or best offer. Both like new. Berks County 215-589-4206

For Sale - Holstein Feeder Steers; Brown Swiss Bull; Seed Wheat; 717-872-5554.

For Sale: Warm Morning Heater, model 460B, good condition. \$275. 215-445-5964.

Log Splitter 3 pt. hitch, hydraulic pump. \$950. or best offer. 215-343-6293.

NOTICE - Will do any kind of hauling to Western and Upstate Pa. Also New York. From Lancaster and surrounding areas. 717-392-6121 evenings.

Toledo 2" electric pipe machine with complete set of quick opening dies. \$500. 717-653-8054. 717-285-3208.

Wanted To Buy large quantities of firewood, cut and split or in logs. Call 717-392-6121 evenings.

Wells 7"x11" metal cutting horizontal band saw with coolant. \$1,200. 7 1 7 - 6 5 3 - 8 0 5 4 . 717-285-3208.

30-8' Florescent light fixtures with four 4' light bulbs, \$10 each. 40-Heavy aluminum window frames 44"x82" with one 14" tilt window, \$20 each. Call 215-699-8257 6 AM-8 AM or after 5 PM.

8 HP Troy roto tiller, excellent condition. \$750. 7 1 7 - 6 5 3 - 8 0 5 4 . 717-285-3208.

1972 Ford 8000C 10 wheeler, 225 HP cat, 13 speed road ranger, 22' bed with 4' extension, new clutch and transmission. \$7,200 or best offer. After 6 PM ask for Ivan 717-768-3052.

1972 Tractor Ford Sleeper Cab, 238 Detroit engine, selling for parts only. 100 gal. Propane Tank, propane carb, about 60 gals. of propane in tank. This tank is made for saddle tank mounting on truck. Make offer on above tractor propane tank. Phone 717-234-7851 and ask for Dan.

1973 Diamond Rio Detroit motor, whole or parts. Steel dump trailer, 23' long with high sides. 215-255-5145.

1973 Dodge cattle truck with wooden Hostetter body, 11 ft., excellent for hauling horses. Call 717-786-2750.

1975 GMC with 24' Jerdan rollback body; 1964 Ford C-700 with 22' Schwartz rollback body, excellent condition; 1976 Chevy tandem grain truck, 18' body and hoist. 201-782-5082.

1976 Chevy CK20, 34 ton, 4WD. Rebuilt 350 engine. New Holly economizer 4 barrel carb. New distributor. New radiator. Rebuilt heavy duty auto. trans. Heavy duty rear end. 1200x16.5 tires. Needs body work. \$2800. 814-684-1204 after 5 p.m.

1977 Chevrolet crew cab, dual wheel pickup. 10,000 GVW. Equipped for hauling. excellent. \$5,800. 7 1 7 - 6 5 3 - 8 0 5 4 . 717-285-3208.

1977 LN7000 Ford cab and chassis, 3208 Cat motor, 5 SP, 2 SP, PS, good condition. \$7,500. Bucks Co. 215-297-8354.

1980 Chevy Scottsdale 3/4 ton P.U. w/camper cap, 56,000 miles, newly inspected, \$4995. Also, single axle walk-in tool trailer, \$500. Call 215-683-7304, ext. 210 weekdays between 8am and 4pm

1983 VW sport pickup truck, front WD 29,000 miles, cap, radials, \$4,400. 77 IHC tractor. Fruhauf dump trailer, PS, jack, brake, good rubber, \$2,600. Lebanon Co. Lester Hess 717-273-6018.

1984 Ford F-150, 4x4, standard trans. 6 cyl., radial tires, AM-FM radio, walnut brown, only 7,500 mi., like new. Call after 5:00 p.m. Clyde Flack, R.D.3, Mansfield, Pa. 16933. 717-549-5882

22' Flat bed Gooseneck trailer, double axel H.D. construction. \$2,500. 7 1 7 - 6 5 3 - 8 0 5 4 . 717-285-3208.

24' Aluminum dump trailer, \$6,000. 717-532-6257.

40' Great Dane stainless insulated potato trailer. Wilson livestock trailer for corn crib. 42' Brown with NWD 30 reefer. 40' Strick open top. Keens. 717-626-5420.

65 IH 20' grain dump, 56,000 GVW, 4200 hrs. 717-733-8246.

73 Mack R685, 5 speed, 22" tires, good condition, \$11,500. 78 KW Conventional, 350 Cummins, 15 speed, 20" tires, p/s, air conditioner, wet line, real clean truck, \$27,500. Ph. 215-493-3040.

77 LN 8000 Ford truck, 3208 Cat engine, 5 SP w/2 SP rear on 1000x20 rubber, 33,000 GVW excellent condition. \$10,500. 1979 LN 8000 Ford truck, 3208 Cat engine, 5 SP, 2 SP rear on 11x22-5 tubeless rubber, 33,000 GVW \$15,000. 1974 450 C JD dozer w/backhoe, new tracks, drive sprockets, rolls, engine overhauled, starter and fuel pump, good shape. \$23,000. 1969 Chevy C-60 tandem 13' dump with 427 engine, 5x4 trans, engine just overhauled, excellent condition. \$5,500 304-735-5273.

Flo-more grain system with a new 10 hp electric motor. 215-255-5145.

For Sale - Chevy dump truck 14' Midwest body with cattle rack, 26,000 gross. 215-944-0535.

For Sale - New, Used Dump Grain Flats, Rollback Truck Bodies. Good selection of used trucks, combine and Lowboy trailers. 814-623-9696.

For Sale - 1979 GMC 35 rollback. Two cars, 4 speed, V8, winter tires. 1974 International Loadstar grain dump. Priced to sell. 814-623-9696.

For Sale - 1973 City 40' aluminum flat bed trailer, good condition. \$4100. 717-943-2891.

General engine, 12 ton tag along trailer. \$2,500. Bucks Co. 215-297-8354.

1966 GMC Grain truck 14' steel dump bed with 409 Chevy motor, \$2,500. 301-734-6088.

1967 IH Harvester Model 1890, V8, 52, 20' flat bed, good rubber, good condition. \$2,800. 717-384-4319.

1970 Ford 26,000 G.V.W. long wheel base C&C, good condition, \$3500. 1968 Dodge Tandem for parts, 413 motor, 5x3 trans., \$950. 717-286-1064 evenings or weekends.

1972 Chevy 1 ton stake body, 6 cyl., 79,000 miles, 4 new winter tires, \$1200. Juniata Co., 717-527-2573.

'79 Ford Ranger F-250 Super Cab pickup, 400 auto., PS, PB, air, cruise, AM-FM stereo, dual tanks, sliding rear window, 54,000 miles. \$5,950. 717-733-2873.

'80 Dodge 3/4 ton Club Cab pickup, 318 4 speed, PS, PB, AM-FM dual tanks, 7500 GVW. \$4,975. 717-733-2873.

'80 Ford F-150 Super Cab pickup, 302 auto., PB, PS, AM-FM cassette w top, excellent condition. \$5,750. 717-733-2873.

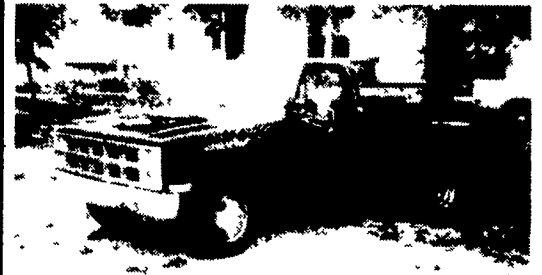
'81 Chevy 3/4 ton, 4 WD pickup, 350 auto., PB, PS, AM-FM, radial tires, 39,000 miles. \$7,950. 717-733-2873.

'81 Chevy Scottsdale heavy duty 1/2 ton diesel pickup, auto., PS, PB, dual tanks, 50,000 miles. \$3,975. 717-733-2873.

'81 Datsun diesel King Cab pickup, 5 speed, AM-FM, sliding rear window, 39,000 miles. \$4,100. 717-733-2873.

For Sale - Utility Trailers, tilt bed 13'x76" flat deck, 1608 GVW. Comm. Axles. Good for two snowmobiles, wood or whatever. Includes wiring harness. Retail \$1395/close out \$895 (Only 7 left) Schuylkill Cty, PA. 717-668-2706.

1974 GMC with 1 year old Hewey alum. 16 ft. grain body & new hoist. All new tires. 301-457-4634 after 6pm.



FOR SALE
1981 G.M.C. SEIRA CLASSIC
1 Ton Dual Wheel Pickup, 454 Auto. PS, PB, Air, AM-FM, Dual Tanks, Sliding Rear Window
7,950*
A&J AUTO SALES
Rt. 322 Ephrata
717-733-2873

SPECIAL BUYS ON ALL '84 CARS & TRUCKS!!
See Us Before You Buy A New Vehicle!
1983 Ford Ranger Pickup
1981 D150 6 Cyl., Low Miles, Auto
1978 Chevy Shortbed Pickup
1977 GMC Pickup, High Sierra
1974 Custom Van
All New 1984 Cars Below Invoice No Prep. or Delivery Charge Good Til Nov. 15
PETTICOFFER DODGE, INC.
Route 230 East Next to Shopping Center
Elizabethtown, PA
PHONE 717-367-1808

VALUES ON 4x4's...
1982 CHEVY C10 (2 To Choose From), V8, Choice of Auto or Standard Trans, Long Beds and Short Beds Avail. **From \$9,595**
1984 CHEVY BLAZER, Loaded . **\$10,595**
1981 CHEVY SUBURBAN, 4x4, 27,000 Orig. Miles, C20, 2 Tone Paint, 950x 16 3 Radial Tires, Hubs, etc. Great Tow Vehicle **\$9,595**
1981 JEEP CJ7, 4x4, Red with White Soft Top, Bucket Seats, 47,000 Orig. Miles, Snow Ready **\$6,595**
1980 CHEVY BLAZER Silverado, Maroon & White, 8 Cyl., Auto., PS, PB, Air, Lockout Hubs, Tilt Wheel, Cruise Control, Stereo Cassette **\$9,595**
1979 CHEVY BLAZER, 4x4, 55,000 Orig Miles, Custom Mirrors and Running Board, 2 Tone Paint, Extra Sharp **\$6,995**
1977 FORD F150, Auto; Short Bed, Locking Hubs, White Spoke Wheels, Large All-Terrain Tires **\$6,995**
Rhodes Oldsmobile
Gilbertsville, PA
Call toll free: 1-800-362-7655

USED TRUCK CENTER OVER 150 TRUCKS IN STOCK
DUMPS ... STAKES ... 4x4's VAN'S ... UTILITIES STEP VAN'S... PICKUPS ... FREIGHT VANS

'79 FORD F150 4x4 300 6 cyl., 4 spd., lock hubs, new paint
***4,995**
Many others available

'78 CHEV. 3/4 TON Utility 292, 6 cyl., auto, new paint
***3,995**
Many other utilities from \$1495

'80 CHEV. 1 Ton Van V8, Auto, P/S, P/B, New Paint, Like New
***4,495**
20 Others from \$995

'77 CHEV. 1 Ton 9' Flatbed, V8, Auto., New Paint, Extra Clean
***4,495**

M & E TRUCK SALES
1210 RIDGE PIKE NORRISTOWN, PA 19401
215-275-7771 TOLL FREE IN PENNA. 1-800-272-7771

STORE & MARKETS KUNTZELMAN'S PENN DUTCH ICE CREAM Premium Lancaster County Ice Cream ELIZABETHTOWN CREAMERY CO., INC.
Rear 519 S. Market St.
717-367-1389

THE DRY TOILET
Self-Contained Composting Toilet Needs No Water Or Chemicals
Replaces conventional septic systems with a self-contained bioconversion appliance • Eliminates wastewater discharge • Constructed from rugged stainless steel and non-porous plastic • Features positive venting for odorless operation • Easily maintained • The compact HUMUS 80 occupies only 25"x33" of floor space
Pump Services, Inc.
157 Knoxlyn Rd., Gettysburg, PA 17325
(717) 334-0224 or (800) 242-3909

LADDER SALE INVENTORY REDUCTION
55 Straight Ladders 22, 24 and 26 Feet Your Choice
Only ***2.00** Per Foot
Cherry Hill Outlet
Long Lane at Marticville Rd. (PA 324)
717-872-9311

"ALL TYPES OF" SIGNS & SUPPLIES:
Magnetic, Decals, Builder, Bumper Strips, Auto Tags, Letters, Track, Etc
AD SPECIALTIES: Pens, Pencils, Key Tags, Caps, T-Shirts, Calendars, Etc.
PRINTING: Business Cards, Envelopes, Bill Heads, Sales Books, Wedding, etc
OFFICE PRODUCTS: Rubber Stamps Etc
*Low Prices-Good Quality-Many Yrs Experience
J. LANDIS BOWERS
717-285-5649
*See Us At The Following Markets ROOT'S—GREEN DRAGON—SHAUB'S 5 to 9 P.M.

35 TRUCKS AND TRAILERS
'82 Chevy heavy duty 3/4 ton, 6.2 diesel truck, auto., PB, PS, 8600 GVW w Stahl utility body w closed-in top, 22,000 miles. \$8,950. 717-733-2873.
'83 Ford F-150 1/2 ton pickup, 300 6 cylinder, 3 speed overdrive, PS, PB, AM-FM, sliding rear window, 11,000 miles. \$6,750. 717-733-2873.
'83 Ford F-250 3/4 ton, 4 W pickup, 300 6 cylinder, 4 speed, PS, PB, lockout hubs, 2 tone paint, 23,000 miles. \$9,250 717-733-2873.
'83 Ford Ranger 4 WD pickup, 4 cylinder, 4 speed, PS, PB, AM-FM, 16,000 miles. \$7,500. 717-733-2873
'83 Ford Ranger long bed pickup, 4 cylinder, auto, PS, PB, AM-FM, sliding rear window, 2 tone paint, new all season radials \$4,650 717-733-2873.
'84 Dodge 1/2 ton, 4 WD pickup, 6 cylinder, 4 speed, PS, PB, radial tires, 8,000 miles. \$8,750. 717-733-2873.