

Messick shows grand champion KILE steer

BY JACK HUBLEY
HARRISBURG — Challengers from surrounding states were overpowered by the "home team" as a Pennsylvania steer won top honors in KILE's Junior steer show on Sunday, and went on to be named grand champion over both the Junior and Open shows. Pennsylvania steers were also named to first-place in two-thirds of the open and junior classes.

Sally Messick flashed an ear-to-ear smile after judge Herman Purdy of Alexandria crowned her middleweight entry junior champion, and could find no Open show challengers strong enough to unseat her for grand champion honors.

A home-grown champion, Messick's Chianina-Angus steer

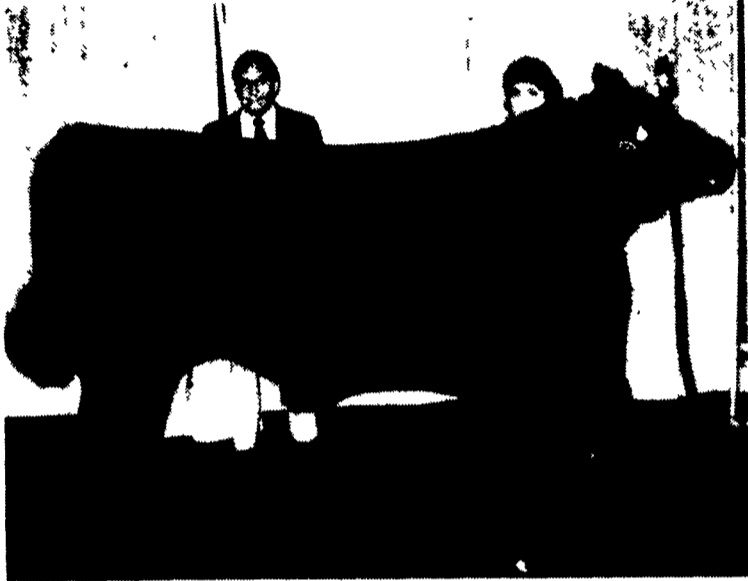
was sired by a Messick bull, MF Ideal, owned by her sister, Patty Wolfgang. A resident of Middletown, and a junior at Hershey Senior High School, Miss Messick had campaigned her steer to a class win at the Northeast Region Chianina Field Day in August.

Close behind the number-one steer was Ellen Bergfeld of Summitcrest Farm, Summitville, Ohio, who took reserve grand champion honors in the overall show after her steer was named Open show champion. Bergfeld's 4-H project steer was a Chianina-Angus crossbred sired by the Chianina bull, Black Ben.

Pennsylvania steers dominated the Junior Show division championships, with Jeremy Longenecker of Lititz leading his



Sally Messick's steer won grand champion honors in junior competition, then went on to be named grand champion of the entire steer show.



The grand champion steer in open competition was shown by Ellen Bergfeld, Summitville, Ohio.

Angus-Chianina to lightweight champion honors, and Cathy White of Nottingham taking reserve lightweight champion with her Angus-Chi steer. A Chianina steer shown by Jamie Kohr of York was named champion of the heavyweight division.

Following are the Junior and Open show results:

- JUNIOR STEERS**
Class 1-Lightweight
 1 Paige Templeton PA 2 Jeffrey Stahl PA 3 Jason E Kutz PA
Class 2-Lightweight
 1 Catherine White PA 2 Gregg Christman PA 3 Fred Weaver PA
Class 3-Lightweight
 1 Jeremy Longenecker PA 2 Kristin Chupp PA 3 Leigh E Hitz PA
Class 4-Middleweight
 1 Margaret Herr PA 2 Edwin Livingston PA 3 Bill Smith

- Class 5-Middleweight**
 1 Sally Messick Middletown PA 2 Douglass Goodwin Lewisburg PA 3 Tom Gordon Carlisle PA
Class 6-Middleweight
 1 Dwayne Hinkle WV 2 Chris Hopple PA 3 Barbie Davis PA
Class 7-Heavyweight
 1 Mary Jo Prince, OH 2 Geraldine Popp PA 3 Lynn Kyger VA
Class 8-Heavyweight
 1 Ted Wood OH 2 Dwayne Messick PA 3 Karen Fought PA
Class 9-Heavyweight
 1 Jamie Kohr PA 2 Robyn Davis OH 3 Nicole Barker IN
Lightweight Champion
 Jeremy Longenecker
Lightweight Reserve Champion
 Catherine White
Middleweight Champion
 Sally Messick
Middleweight Reserve Champion
 Dwayne Hinkle
Heavyweight Champion

- Heavyweight Reserve Champion**
 Mary Jo Prince
Junior Show Champion
 Sally Messick
Junior Show Reserve Champion
 Ellen Bergfeld
OPEN STEERS
Class 1-Lightweight
 1 Gwen Hower Wagner PA 2 Lance Armstrong PA 3 Gregory Zook PA
Class 2-Lightweight
 1 Ellen Bergfeld OH 2 Sherril Gilmore PA 3 Heather Schmuck, PA
Class 3-Heavyweight
 1 Walter Cattle Co PA 2 Clay Kyger VA 3 Karen Rabenold PA
Champion Open Steer
 Ellen Bergfeld
Reserve Champion Open Steer
 Walter Cattle Co
Grand Champion Steer
 Sally Messick
Reserve Grand Champion
 Ellen Bergfeld

WATER THAT WON'T QUIT



RELAX...
Ritchie.
 WATERS 'EM RIGHT™

Ritchie Fountains deliver. Even in the dead of winter they are out there working. You're not.

Weatherproof. You bet they are. Heating systems and efficient insulation keep water ice-free... just set the Watt Watcher™ thermostat for minimal energy use. Big-throated, non-stick plastic valves keep water gushing in. Each of your cows get all the water they need to promote peak production.

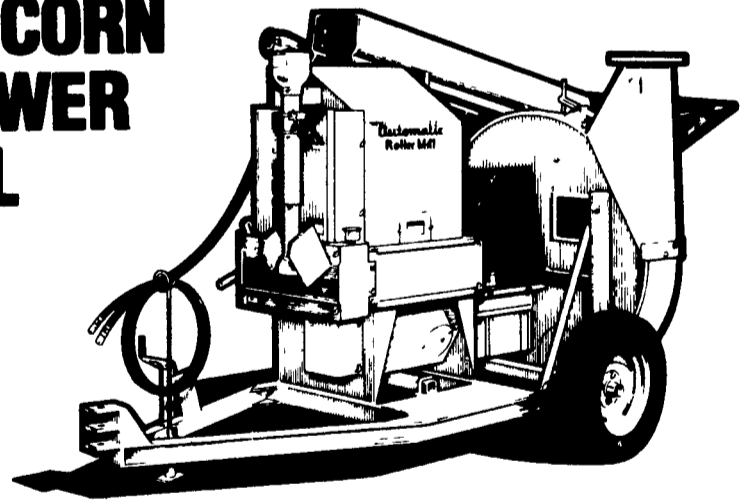
Ritchie Fountains are tough, too. Quality-built with rugged heavy galvanized steel and CD-50 epoxy finish to stand up to weather and barnlot abuse.



Why take chances on anything less than a red and yellow Ritchie Fountain? Call your Ritchie dealer for water that won't quit.

the one that keeps rolling when others quit!

Automatic EARCORN BLOWER MILL



Automatic pioneered the development of the unique crusher unit which shells corn and shreds the cob ahead of the rollers which crack the kernels and reduce the cob further. No troublesome screens to change or slow down the capacity. It comes with 8-foot hydraulic intake auger and 54-inch blower. Also available with an 11-inch tilting discharge auger with 10-foot reach in place of the blower.

- **UNIQUE CRUSHER ROLLS** shell the corn, crush the cob ahead of the rolls, no screens to plug.
- **FATIGUE-PROOF DRIVE SHAFTS**, ground and polished.
- **CARBON STEEL ROLLS**, hardened to a 56 Rockwell "C", outperform other rolls in capacity and durability.
- **20-SPLINE**, 1 3/4-inch PTO shaft with shear pin protection.

RYDER SUPPLY
 — CO.

539 Falling Spring Road
 P.O. Box 219
 Chambersburg, PA 17201-0219
 Phone 717-263-9111