

ESTATE SALE

**70 AC. FARM PLUS
11 AC. TRACT,
FARM MACHINERY, TRUCKS,
BUTCHER EQUIP., TOOLS,
ANTIQUES & HOUSEHOLD
SATURDAY, NOV. 17, 1984**

10:00 A.M.

Located in Juniata Co., 8 mi. south of Port Royal. Sale sign 6 mile south of Port Royal along Route 75.

**ANTIQUES & HOUSEHOLD ITEMS
SELLING AT 10:00 A.M.**

**BOTH TRACTS OF REAL ESTATE
SELLING AT 1:00 P.M.**

**PARTIAL LISTING OF
BUTCHER EQUIP.**

TOOLS & FARM MACHINERY

3-kettle butcher furnace top; 4 butcher kettles; Doall elec. meat saw; elec. meat grinder; 3 sausage stuffers; butcher knives, brass & iron ladles, 2 & 3 prong forks; 12 T wood splitter w/motor (used 1 year); Forney welder, M. C5; 5 sets of steelyards; Sears, 1 1/4 hp. gas engine; elec. chain hoist; Ford 800 tractor, good cond.; Case tractor, model VA; New Holland hayliner 69, baler; J.D. 40 self-propelled combine; Woods Dixie Cutter, model M5; Ford 3-F, 3 pt. plows; Danuser post driver; Ford truck 350 w/cattle rack; Ford pick-up truck F-100 w/stock rack; M.F. 12 hp. lawn mower; 12x25 steel silo; hay & straw by the mow; other machinery & farm related items.

TERMS OF PERSONAL ITEMS-CASH OR GOOD CHECK

TERMS OF REAL ESTATE-20% down at time of sale, bal. in 30 days, other terms at sale.

THE ESTATE OF

**HARRY H. LYTER, Deceased
HOLMES H. LYTER, Admn.**

Long's Auction Service
RD #1, Box 458

Port Royal, Pa. 17082

Ph. 717-527-2405 or 4458

Lic. No. AU 001702-L

Public Auction Register

Closing Date - Monday, 5:00 P.M.
of each week's publication

WED. NOV. 21 - 2 PM
Public Auction of 12.4
Acres Farm. Located
along Brossman Rd., between
Bethary Rd. and Diamond
Station Rd.,

Ephrata Twp., Lancaster
Co., PA. Nora S.
Burkholder Weaver,
Owner. T. Glenn &
Timothy G. Horst, Auctioneers.

WED. NOV. 21 - 11 AM
Public Auction of
Registered and Grade
Holstein Milking Herd
Dispersal Sale. Located
from Rt. 74 north of York.
Approx. 3 miles from Rt.
30 by-pass, to Nellie's
Restaurant and Brooks
Drug Store. Turn west,
left, onto Davidsburg Rd.,

continue west 2 1/2 miles to
farm sign on right hand
side, or 1/2 mile east of
Village of Davidsburg.
Paul Jacobs & Alma Stambaugh,
Owners. Clair R. Slaybaugh,
Auctioneer.

Acres Farm. Located at
624 Meetinghouse Rd., 1/4
mile northeast of Rt. 113,
northwest of Franconia
Menn. Church, Franconia,
PA. Ralph and Rhoda
Detwiler, Owners. Sanford
A. Alderfer, Inc.,
Auctioneers.

WED. NOV. 21 - 9 AM
Public Auction of Real
Estate, New Building
Supplies, Equipment and
a large assortment of
Surface Lumber. Located
at 121 North 11th St.,
Trevorton, PA. Upper
Dauphin Nat'l Bank,
Owner. Dockey, Dockey &
Deppen, Auctioneers.

WED. NOV. 21 - 1 PM
Public Auction of a 36

THURS. NOV. 22 - 9:30
AM Public Auction of Farm
Equipment, Travel Trailer,
Household Furnishings,
Antiques and Collectibles.
Located on Elm St., Valley
View, PA.; turn off Rt. 25
unto Broad St., go 2
blocks south to Elm St.
Leon H. Schwalm, Owner.
Mike & George Deibert,
Auctioneers.

LIQUIDATION AUCTION

OF MATTERN LUMBER CO.

WEDNESDAY, NOV. 21, 1984

9:00 A.M.

Located At 121 North 11th Street, Trevorton, Pennsylvania
REAL ESTATE

All That Certain Lots Or Parcels Of Ground Situate In The Village Of Trevorton, Northumberland County, Pennsylvania, having a frontage of 180', more or less, on Eleventh Street and a depth of 275', more or less, whereon is erected A 28'x100' 2-STORY BRICK BUILDING - First Floor Consists Of SHOWROOM WITH DISPLAY AREA, COUNTER AREA, STORAGE-FURNACE ROOM AND TWO POWDER ROOMS...Second Floor Consists Of OPEN OFFICE SPACE, PRIVATE OFFICE AND POWDER ROOM...HEATED BY OIL FIRED STEAM FURNACE...Also Situate On Lot Is A 28'x100' 2-STORY FRAME WAREHOUSE - This Building Is Sectioned Off Into Storage Areas And Bins. Attached To The Warehouse Is A 24'x30' 1-STORY SHED...Additional Improvements Consist Of A Series Of OPEN FRAME SHEDS OF WOOD CONSTRUCTION. For additional information or inspection contact Robert W. Lawley at 717-692-4781 or Auctioneer at 717-758-6004. Real Estate will be offered at 1:00 P.M.

NEW BUILDING SUPPLIES

Aluminum Threshold Doors; Peachtree Exterior Steel Door; Lg. Selection of Single Strength Glass; Anderson Perma Shield Casement Window; 32" Metal Entrance Door; Selection of Solid & Hollow Core Doors; Selection of Aluminum Storm Doors; Size C Bilco Basement Door; Asst. of Masonite & Plywood Paneling; Pegboard; Waferboard; Lg. Asst. of Vinyl Trim Mouldings; Selection of Suspended Ceiling Gridwork; 43 Boxes of Owens Corning Fiberglas Ceiling Panels; Lg. Asst. of Ceiling Tiles; Assorted Pine Mouldings; Recessed Grid Light Fixture for Suspended Ceiling; 30" Bathroom Vanity w/Top; Oak Kitchen Cabinets; Abitibi Coverall Tub Surround Kit; Electrical Boxes; Yale Security Latchlocks; Asst. of Kwikset Locks; 17 Bags of Blown Insulation; App. 300 Rolls of Assorted Owens-Corning Fiberglas Insulation in 2' & 16" Widths; Lg. Selection of Tamko Roofing Shingles in Assorted Colors; Tamko Selvedge Edge Roofing, Mineral Surfaced Roofing & Asphalt Felt; 29 Boxes of Bird Double 4 Vinyl Siding; Sakrete Sand Mix, Concrete Mix, Blacktop Sealer & Blacktop; Roof Fix Plastic Cement; Great Stuff Foam Sealant; Drylok Clear Concrete Protector; Panel Adhesive; Top 'n Bond Cement Mix; Dry Wall Compound; Durex Roof Coating; Caulking Guns & Caulk; Asst. of Paint Brushes & Rollers; Chroma-Cal High Performance Colorants; Asst. of Spray Enamel; Selection of Zar Stain; Lg. Selection of Bruning Interior & Exterior Paints; Elmer's Glue; Arrow Staple Guns; Light Bulbs; Hinges & Butt Hinges; C-Clamps; Steel Jack Posts; 4" Sewer & Drain Pipes & Fittings; Asst. of Wooden Dowels; Closet Rods; Asst. of Panelboard Nails; Steel Cable; White Aluminum Coil Stock; Rollex Soffit, Fascia & Part E; White Aluminum Gutter, Downspout & Accessories; Lg. Selection of Nails; Play Sand; Kennel Bedding; Numerous Other Items.

EQUIPMENT

1975 Ford Custom F-350 Stake Body Truck; 1971 Chevrolet Custom 20 Pick-Up Truck; clark 4450-lb. Capacity Forklift; 8' Pick-Up Topper; Lg. Hassenforder Office Safe; Sweda Cash Register; Latham Time Clock; Monarch Marking System Machine; OCE Custom 2100 Copier; Brothers Electric Typewriter; (2) 6' Office Desks w/Formica Top; Office Swivel & Straight Chairs; (3) Cole 4-Drawer Filing Cabinets; 7-Drawer Metal Card Filing Cabinet; Etc.

TOOLS

THE FOLLOWING ARE NEW: B&D 38" Cordless Drill; B&D Jig Saw; B&D 7 1/4" Circle Saw; B&D Dual Action Sander; B&D 1 1/4 h.p. Route; Wiss Aviation Snips; Sure Fire Self-Igniting Torch Kits; Stanley Tools - Hack Saws, Screwdrivers, Combination Square, Powerlock Tapes, Nail Sets, Utility Knives, Levels, Pocket Plane, Framing Squares, Claw Hammers, Bow Saw, Ripping Bars; Trojan Saber Saw Blades; Nicholson 7 1/4" Saw Blades; Irwin Speedbor "88" Wood Bits; Etc.

THE FOLLOWING ARE USED: (2) Highland Lab. Paint Mixing Machines Used for Bruning Paint Mix; Red Devil 1/4 h.p. Paint Shaker; Fletcher Plastic-Glass Cutting Machine; Delta Rockwell Radial Arm Saw.

LG. ASST. OF SURFACE LUMBER SUCH AS:

1x12's-14', 16'; 2x4's-10', 12', 14', 16'; 2x6's-12', 14', 16', 18'; 2x8's-8', 12', 14', 16'; 2x10's-8', 10', 12', 14', 16'; Fir Tongue & Grove Porch Flooring; Etc.

TERMS: REAL ESTATE - 10% DOWN. FURTHER TERMS AND CONDITIONS TO BE GIVEN DAY OF SALE. PERSONAL PROPERTY-CASH. PERSONAL CHECKS ACCEPTED ONLY FROM PERSONS HAVING AN ESTABLISHED ACCOUNT WITH AUCTIONEER OR APPROVAL PRIOR TO DAY OF SALE.

Owner,

UPPER DAUPHIN NATIONAL BANK

JOSEPH C. MICHETTI, Jr., ESQUIRE

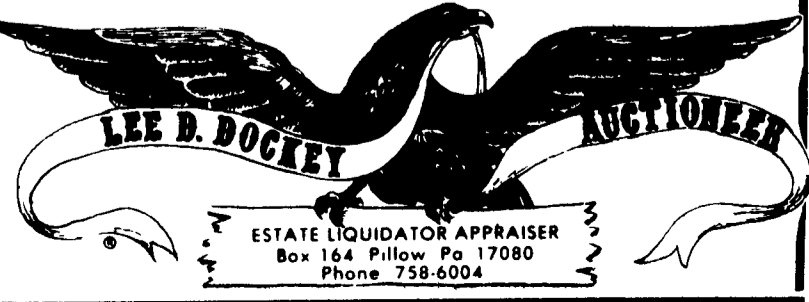
BALDUCCI & MICHETTI

39 N. 4TH STREET, SUNBURY, PA. 17801

AUCTIONEERS:

DOCKEY AU-000229-L, DOCKEY AU-001683-L

& DEPPEN AU-001957-L



PUBLIC SALE

**OF 45 ACRE HORSE AND HOG
FARM, 3 1/2 ACRE FARMETTE;
FARM EQUIPMENT, HORSES,
HAY, ETC.**

on the farm located about 10 miles northwest of Carlisle, 5 miles north of Newville, Cumberland Co., Pa., turn north off Rte. 641 on Blossville rd., cross creek, take first road to left, go 1/2 mile, turn right on Brick Church Rd. to the farm. Follow signs from Rte. 641 at Blossville Rd. on

SATURDAY, NOVEMBER 24, 1984

Sale at 11:00 A.M. - Misc. Items First
Real Estate Offered at 12:00 Noon

TRACT NO. 1 - Approx. 45 acre horse and hog farm. A very desirable farm with following improvements: good frame house with siding includes modern kitchen with built-in stove, cupboards, 2 other rooms downstairs, carpets, custom made drapes, setting for wood stove, oil hot water furnace, 4 bedrooms and bath upstairs, basement. Good bank type barn with 50x70 concrete block addition to main barn, 9 box stalls in main barn, 3 box stalls in another building. 2 hog houses inc. 120 sow gestation house with 11 - 10x20 pens plus 5 - 4x20 boar pens, open front Nebraska bldg. with pit below; another bldg. with 18 farrow crates and wire, 8 double deck nurse pens; 30 by 7 1/2 ft. outside manure pit. One well for house and horse barn, one well for hog houses, other out buildings. Also has setting and well for trailer hookup. All wells drilled within 6 years. About 40 acres good tillable shale soil, 3 acre woodlot, balance pasture.

TRACT No. 2 - Nice farmette containing approx. 3 1/2 acres, improved with wood frame house, kitchen and two rooms downstairs, plus summer kitchen, 3 rooms and bath upstairs, oil furnace, also fixed for wood stove. Small barn, fixed for horses, other outbuildings, well for house and barn. Properties are adjoining. Phone Margaret M. Shetron at (717) 776-6104 evenings for inspection of properties. Real Estate offered with reservation.

TERMS 10% down; balance upon possession or within 90 days.

Taylor Andrews and
Frances H. DelDuca, Attorneys

**FARM EQUIP. - AUTO - OTHER
ITEMS - HAY - at 11:00 A.M.**

David Brown 990 Diesel with Kelly loader, chains to fit; Farmall M, wts. and pulley; M. H. 444 with wide front; M.F. 3-16 in. plow; N.H. 273 baler with thrower, good cond.; 6 bales twine; Int. 990 windrower; N.H. 256 rake; N.H. elevator; 2 Bale King rack wagons, 8 ton gears; wagon and bed; 1500 gal. Feed Easy vacuum tandem axle tank spreader; Starline spreader for parts; J.D. disc; J.D. mower; 6 ft. 3 pt. blade; 3 pt. cults; post digger; 3 and 5 ton Stoltzfus feed bins; Lincoln 225 welder; feed cart; Arkfeld 500 lb. portable scales; hog feeders; water medicator; alum. and wooden double ladders; lumber, siding, concrete blocks, anvil, oil drum, Kawasaki cycle, Cadet 75 riding mower, pickup cab, portable gas water heater, wheelbarrow, band type meat saw, 220 meat grinder, meat wrapper, misc. items; lot of Brome grass hay by ton; 1981 Chev. Caprice Classic, 6 cyl., air, etc.

3 REGISTERED QUARTER HORSES - 8 yr. old mare, sired by Skip Brick 2, due to foal in April or May to Echo Sporting Lad; 1 yearling stud colt and 1 weanling stud colt; some tack sells.

Terms Cash or Good Check.
Lunch at sale; Identification required for Bidder's Numbers.

**JAMES H. SHETRON &
MARGARET M. SHETRON**
R.D. 4, Newville, Pa. 17241

Ralph W. Horst,
Marion, Pa. 17235, Auctioneer
Lic. No. AU-000437-L

PUBLIC AUCTION

**TRACTORS, TRUCKS, COMBINE,
FARM AND IRRIGATION
EQUIPMENT**

SATURDAY, NOVEMBER 17, 1984

10:00 A.M. (Rain or Shine)

LOCATED: 3/4 mi. from Preston, Md. on Blacklanding Rd. Turn off Main St. by Lutheran Church.

COMBINE:

Ford CLAUDIA DOMINATOR 96x360 cu. in Mercedez diesel, Hydro. stat., 17' floating grain table and 4 row corn head. (Less than 400 hrs. - 1 yr. old)

TRACTORS & EQUIPMENT:

Int. 1486 diesel-w-cab & air, Ford 7600 diesel, A.C. 180, David Brown 1210, Farmall Super A, Int. 560 6x16 plow, Ford 5x16 plow, M.F. 4x14 mounted plow, Ferguson 12' chisel plow, J.D. 210 disc. Int. 5100 drill-soybean special, Int. 8 row no-till planter-w-295 units, Dunham Lehr loader, Int. 4 row rolling cult., Westgo 6 row cult., J.D., 4 row planter w-insecticide boxes, J.D. rotary hoe, Ford 4 row cult., single axle trailer, 12' packer, Taylor-way 12' field cult., 10' cultimulcher, J.D. model 40 spreader, Big Blue 200A spreader, 3 section drag, 3 flat wagons (1 J.D.), Clark sprayer, lime spreader, forks for front end loader, Kawasaki 350 dirt bike, tanks w-pumps for pickup, acetylene outfit, and High Pressure Washer. (VERY FEW SMALL ITEMS)

IRRIGATION EQUIPMENT:

Long Traveling Gun, (used one Season), New Marlow 4" pump-pto. drive, large amount of pipe (5", 6", 7"), 2 Rain Bird guns, assortment of misc. fittings.

TRUCKS

1963 Int. 1700 w-15' dump body, 1962 Int. 1700 w-15' dump body, 1979 C-10 Chev. diesel pickup, Inspection of trucks, responsibility of purchaser.

TERMS OF SALE: Cash or Approved Check (Letter from Bank guaranteeing funds.)

Owner

HARRY RIECK JR.

673-7315

A. Curtis Andrew Auction, Inc.

Auctioneers

Curtis Andrew

Mike Roe

479-0756

Lunch Served