

Farm wife makes mark

(Continued from Page B2)

bouquet of daisies
Another trip took them to Black Beard's Island, on the Georgia coast, a legendary hideaway of the notorious high seas pirate. Hunters had to be on the stands before daylight, setting off while the moon was still shining, but were forbidden to shoot before 9 a.m.

Huge, ancient oak trees cover much of the forested, swampy island, and some of the Hare's hunting companions came back with tales of seeing water moccasins slithering through the marshy grass. While Clyde bagged his limit of two, Mabel found her mark only once.

"Hunting isn't as much work using a bow," is Mabel's assessment of archery. "Instead of walking after the game, you wait for it; plus there's the challenge of letting game get very close."

When that arrow does leave the bow, she wants to be very sure that the hit will be a lethal one, not just an injury which cripples the deer. Because of that standard, and in spite of her expertise at distances, Mabel sits tight until a deer is within 15 to 20 yards, closer than she did in earlier years.

Both she and Clyde are also extremely selective, shooting only mature animals, and never small,

or young, deer.

Once her target is hit, she walks for up to 30 minutes before giving chase. It's a practice Clyde taught her from the first years of archery. A stricken deer, if chased immediately, will flee often great distances. With no one in pursuit, the animal usually travels just a short way and then lies down.

Even the best shots, sometimes, are simply left go.

While in a stand once, Mabel watched as a partially-grown fawn worked its way from the woods toward a stand of apple trees, the mother warily following. Able to see the ribs protruding on the gaunt, still-nursing, doe, Mabel left the bow untouched.

"Her baby needed her much more than I did."

Archery excellence has won the Hare's an array of trophies and awards which dot their farmhouse, along with mounts of very special trophy deer.

One is Mabel's first, a spike buck taken in Lycoming County. Others are award-winning specimens, including her 10-point whitetail from Eastern Shore which won Mabel the Maryland competition in 1970.

With archery season now history for this year, the Hare's have both meat and memories of still another

hunt. Some of the venison will be used in Mabel's favorite "ham" recipe. She roasts a whole "ham" portion of the leg, with pineapples, in a slow to moderate oven for several hours. Sliced cold, this venison makes excellent sandwich and cold-cut type meat. Other portions become roasts, stew meat, chops and spicy bologna.

Although thousands of other farmers still await rifle season for whitetails, Mabel Hare's advice from behind the bowstring is just as viable applied to the butt of a nimrod's firearm. Sit. Be quiet. Have patience.

Doll show planned at Guernsey Pavilion

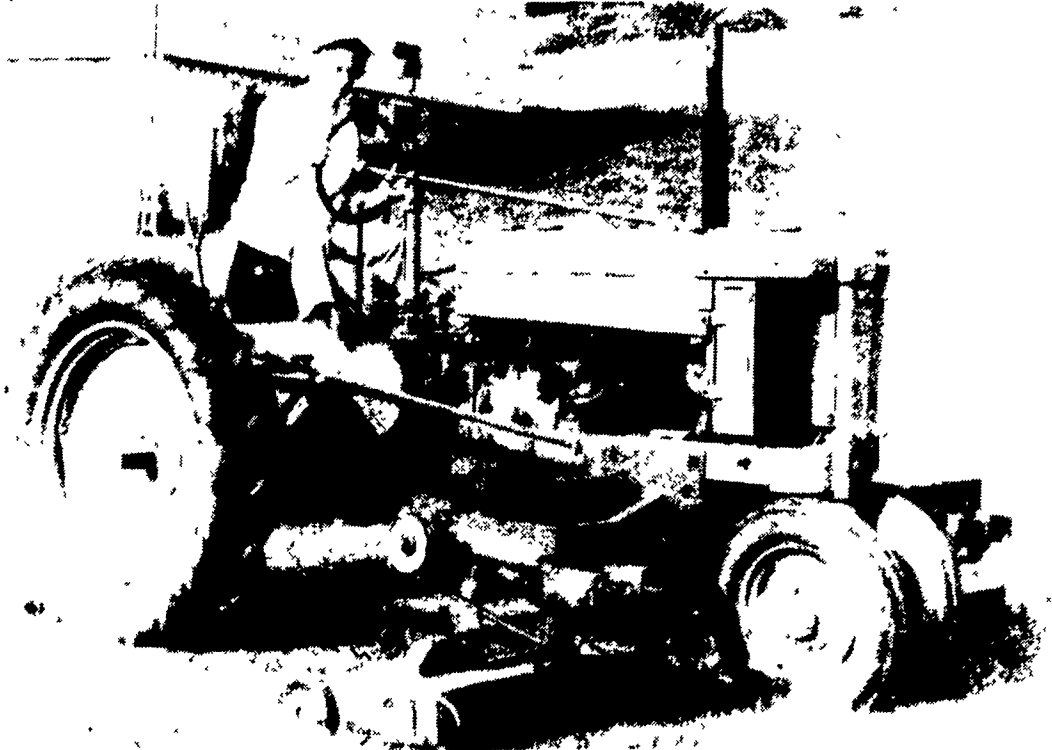
LANCASTER One of the largest Pennsylvania Doll shows and sales will be held on Sunday, Nov. 4 at the Guernsey Sales Pavilion along route 30 approximately three miles east of Lancaster.

The doll show features 150 tables of dolls, toys, books and doll related items. The 7th Semi-Annual show, presented by R & S Enterprises, has grown in size and features dolls from Canada to

Virginia.

The show is open from 10 a.m. to 4 p.m. and a special auction will be held at 3 p.m. Dolls already consigned include Kestner #164, 25-inch Kestner, 21-inch Schoenhut, 17-inch Kestner, 16-inch Shirley Temple, Koppelsdorf #320, Bye L.o baby, Koppelsdorf #300, Madame Alexander - 14 inches and more.

To consign dolls call (717) 687-6741.



One of Mabel's major summertime chores is keeping the expanse of lawn around the farm buildings trim. Clyde's custom-built gang mowers, powered from the tractor flywheel, take a wide bite of grass with each bite.

ZION DENTURE CENTER

(Located at the Y in Zion, Pa., Centre County)

Premium \$225 per denture
(Charactized Bioblend)

Economy \$175 per denture

Vern Shipman C.T.D.
Jerry Navratil D.D.S.
Dentures Repaired While You Wait

In Appreciation of the Dedicated Farming Community
and Its Struggle To Succeed We Are Offering
The Following Special.

Special 10% DISCOUNT
During November and December

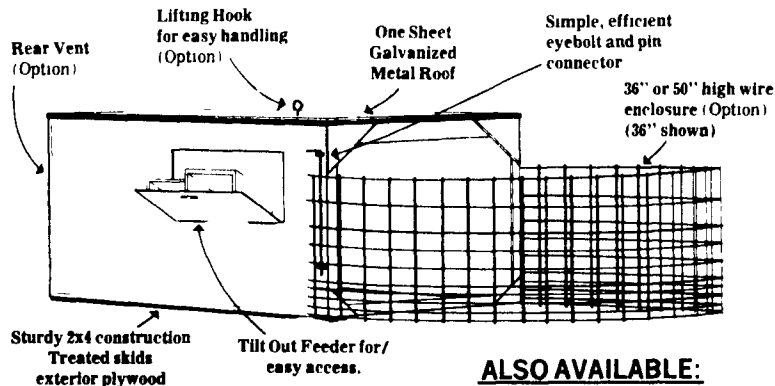
With This Ad

CALL FOR APPOINTMENT
814/383-2631

OFFICE HOURS:

Mon.-Tues. 9-5; Wed. 1-5; Thurs.-Fri. 9-5

Compare the Stoltzfus Woodwork Calf Hutch



ALSO AVAILABLE:
TRACK FOR FASTENING
CALVES' CHAIN TO
CEILING OF HUTCH

Lancaster County:
JOHN LANDIS

1801 Colebrook Rd., Lancaster, Pa.
717-898-7689

Lebanon County:
UMBERGER'S MILL

Rt 322, RD#4 Lebanon, Pa.
717-867-5161

Perry County:
MELVIN STOLTZFUS
Blain, Pa.
717-536-3554

Berks County:
JOE RUTH

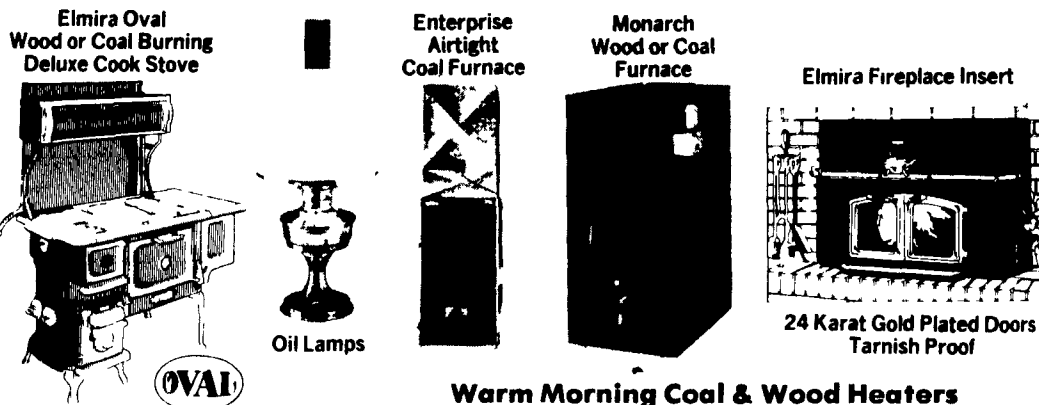
RD #4133 Fleetwood, Pa 19522
215-944 7571

Maryland:
LEROY HILDEBRAN
Woodsboro Md
301-845-8929

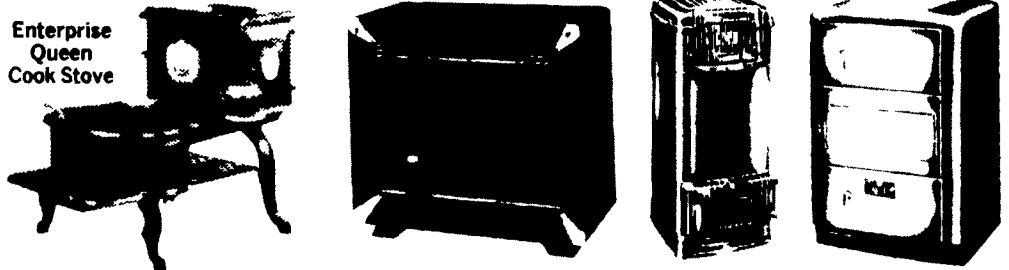
MFD. BY: **STOLTZFUS WOODWORK**

RD 2, Box 2280, Gap, PA 17527
717-442-8972

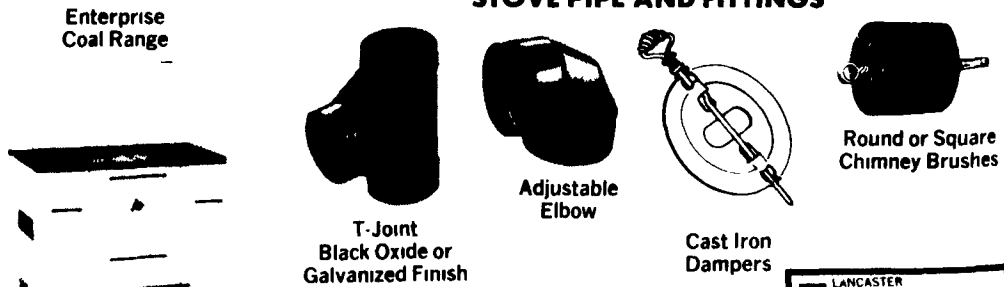
HEADQUARTERS FOR A FULL LINE OF WOOD AND COAL STOVES



Warm Morning Coal & Wood Heaters



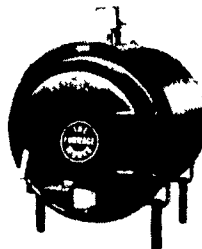
STOVE PIPE AND FITTINGS



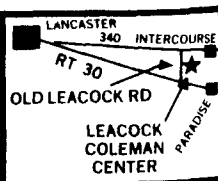
STOVE & FIREPLACE REPAIR PRODUCTS



The SFB-3
Wood Burning Boiler



Connects to any
Hot Water System



STOP IN AND SEE OUR FULL LINE DISPLAY

- Heaters
- Coal and Wood Ranges
- Fireplaces
- Cast Iron Stoves

LEACOCK COLEMAN CENTER

89 Old Leacock Rd., RD 1 Ronks, PA
Store Hours: Mon. thru Sat. 8-5; Tues. & Fri. Evenings till 8:30