

Public Auction Register

Closing Date Monday 5 00 P M
of each week's publication

SAT NOV 17 - 10 AM
Public Auction of Tools,
Equipment, Household
Goods, Sporting Goods,
Etc. Located near Martins
Corner From Rt 340,
take Creamery Rd., north
to Martins Corner Rd.,
turn right to sale Nelson
K & Diane L Walter, Jr.,
Owners. Alvin Horning,
Auctioneer Horning Farm
Agency, Inc

SAT, NOV. 17 - 2 PM
Public Auction of a 94½
Acre Lanc Co Farm
Located along Newport
Rd., Litz, PA. Take Rt
501 north of Litz, PA
approx 2 miles to Newport
Rd. Turn west to farm
Levi F. Hertzog Estate. J
Omar Landis Auction Ser-
vice, Auctioneers

SAT, NOV 17 - 10 AM
Located along Rt. 222
about 3 miles south of
Quarryville, East Drumore
Twp., Lanc Co., PA. (Just
before Mechanics Grove;
Watch for signs). Public
Sale of Real Estate (2½
Story Brick House), fine
furniture, fine antiques,
household goods & guns
Sale by Charles Eckman.
Howard Shaub & Roy C
Probst, Auctioneers

Laura M Myers Estate
Ira Stoltzfus & Son,
Auctioneers

SAT NOV 17 - 1 PM
Public Auction of a 2 Story
Colonial House Located
at the corner of Pearce
and Whitworth Sts.,
Heather Heights,
Chestertown, MD Harry
Rudnick & Sons, Inc.,
Auctioneers

SAT NOV 17 - 10 AM
Public Auction of Antique
Tools, Wood & Metal
Working Machinery,
Mechanics & Blacksmiths
Tools Arden Forge Tool &
Machinery Consignment
Auction Kelly Boswell &

Pete Renzetti, Owners
J.M. Boswell, Auctioneer

SAT NOV 17 - 10 AM
Public Auction of Tractors,
Trucks and Equipment
Located southwest of
Chambersburg, PA, from
Rt 81 at Wayne Ave Exit
No 5, take Rt 316 west,
cross railroad bridge, turn
left on Derbyshire St to
Rt 11, turn left, cross
railroad, turn west on
Industrial Dr, go to dead-
end and turn left to farm,
watch for sign on Rt 11 at
Ind Dr Cashell Farms,
Owners Ralph W Horst,
Auctioneers

SAT NOV 17 - 9 30 AM
Public Auction of Line &
Construction Equipment &
Vehicles Located in
Allentown, PA at the PA
Power & Light, cnr of
Union Blvd & Plymouth
St Vilsmeier Auction Co.,
Inc., Auctioneers

SAT NOV 17 - 10 AM
Public Auction of Travel
Trailer, Farm Machinery,
Industrial Engine. Located
at 1858 Fish & Game
Road, Littlestown, PA
Take Rt 194 south from
Littlestown, PA approx 1
mile and then turn right
onto Rish and Game Rd
and go approx. ½ mile to
sale John E Matthews,
Owner Dennis J
Plumkert, Auctioneer

SAT, NOV 17 - 10 AM
Public Auction of Anti-
ques Located along Rt
340 approx 1 mile east of
blinker light at Compass,
PA west of Wagontown in
West Caln Twp at an old
farm house. Lester B
Rhoads, Executor for the

AUCTION SALE
TRUSTEE'S SALE IN BANKRUPTCY CASE NO. 83 03912

628± ACRES
IDEAL SPORTSMAN ESTATE
16 ROOM RESIDENCE* FARMHOUSES
* BOAT HOUSE
AIRCRAFT LANDING STRIPS *
2.6 MILE RIVER FRONTAGE
50 MILES FROM ATLANTIC CITY
FRIDAY, NOVEMBER 9, 1984-1 P.M.
ON PREMISES
BACK NECK RD.
AND BRICKHOUSE LANE
FAIRFIELD TOWNSHIP, NEW JERSEY

TO BE SOLD AS 4 PARCELS OR AS AN ENTIRETY
Property is located approx 7 Mi. South of Bridgeton, N.J. and is 4
Mi. West of the intersection of Routes 553 601 on Route 601 (Back
Neck Rd.) The Properties Ample Wooded Area Together With the
2.6 Mile Frontage On the Cohansy River Provide An Ideal Location
For A Sportsman's Resort The Cohansy River Is A Navigable
Waterway With Access to Delaware River A Very Large Portion Of
The Estate Could Also Be Used As Tillable Farmland Zoning Varies
As Per Location A Agricultural Marine Resort Flood Plain

TERMS CASH OR CERTIFIED FUNDS 15% DEPOSIT REQ
FOR FURTHER INFORMATION CALL OR WRITE

PA AUCTIONEERS NO AU000175L

Wm. F. COMLY & SON
Auctioneers
1825 E. BOSTON AVE., PHILA., PA. (215) 694-2600.

Dairy and Livestock Sales

SAT. NOV 17 - 6:30 PM
Public Auction on Sim-
mental Cattle. Located at
the Frederick, MD Fair
Grounds Bud & Donna
Gosness, H.L. & Kathy
Hosford & David Butts,
Owners Bob Mullendore,
Auctioneer

SAT NOV 17 - 11 AM
Public Auction of the
Wintacre Holstein Sale
Selling 94 Registered
Holsteins Located 2 miles
east of Sudlersville in
Queen Anne's Co., MD
From US 301 turn east on
Rt 300 and go through
Sudlersville Farm is 2
miles on the right William
L Winterstein, Owner
Remsburg Sale Service,
Auctioneers.

SAT NOV 17 - 10 AM
Public Auction of Tractors,
Trucks, Combine, Farm
and Irrigation Equipment
Located ¾ mile from
Preston, MD on

Blacklinding Rd Turn off
Main St. by Lutheran
Church Harry Rieck, Jr.,
Owner A Curtis Andrew
Auction, Inc., Curtis
Andrew & Mike Roe,
Auctioneers

MON NOV 19 - 12
Noon Public Auction of
Tools, Adv Items, Anti-
ques Located at the cor-
ner of State and Locust
Streets, Ephrata, PA.,
Lancaster Co. Jean E.
Mentzer, Owner of M G
Mentzer's Sons, T Glenn
& Timothy G Horst, Auc-
tioneers

MON NOV 19 - 2 PM
Public Auction of Valuable
73 Acre Tract. Located in
Lancaster Co. along Rt 30

approx 10 miles east of
Lancaster or 1 mile east of
Gap Amos S. Stoltzfus &
Partners, Owners. J
Omar Landis Auction
Service, Jay M Witman,
Auctioneer

MON NOV 19 - 5 PM
Public Auction of 2½ story
house & 2 story barn
Located 2½ miles SE of
Strasburg, Lanc. Co
From Rt 896, turn right
on Iva Rd to Reservoir
Rd, first place Stephen &
Lydia Stoltzfus, Owners
Steve Petersheim,
Auctioneer

TUES. NOV. 20 - 7 PM
Public Auction State
Graded Feeder Cattle
Sale Located at Amherst
Livestock Market, Inc In-

tersection of Rt. 29 and
151, Amherst, VA For in-
formation contact
Esthus Carson, Jr
804-946-7245 or 804
846-3280.

TUES NOV 20 - 4 PM
Farmersville Auction in
Farmersville, 3 mi East of
Brownstown, Lancaster
County, PA

WED. NOV 21 - 2 PM
Public Auction of 12.4
Acres Farm. Located
along Brossman Rd., bet-
ween Bethany Rd. and
Diamond Station Rd.
Ephrata Twp, Lancaster
Co., PA Nora S
Burkholder Weaver,
Owner T Glenn &
Timothy G Horst, Auc-
tioneers

GREENCASTLE LIVESTOCK MARKET
GREENCASTLE PENNA 17225

Special Feeder Cattle Sale

Greencastle Livestock Market, Inc.
FRIDAY EVENING, NOVEMBER 9, 1984
@ 7:00 P.M.

Consignments of steers, bulls & heifers of all breeds & sizes are welcome. If you have
cattle to consign call our office & we will advertise them for you. Consignments of any
number accepted. Livestock will be accepted from 9 A.M. until 5 P.M. sale day.

Consignments For This Sale Include

50 Head Angus Bull Calves Weighing 400 to 600 lb
50 Head Angus Heifer Calves Weighing 400 to 550 lb
25 Head Angus Steers Weighing 600 to 700 lb
20 Head Charolais Steers & Heifers Weighing 400 to 500 lb
2 Charolais Service Age Bulls

Our regular Livestock Sale, of all kinds of butcher cattle, cows, calves, hogs & sheep is
held every Monday eve. at 6 P.M.
Livestock received every Monday from 8 A.M. until 7

Thank You for Your Past Patronage

Hay & Straw sales start Monday, Nov. 9, 1984 @ 1 P.M. and continue every Monday
thru next Spring.

GREENCASTLE LIVESTOCK MARKET, INC.
P.O. Box 86, Greencastle, PA 17225
Phone: Office 717-597-9935 Jay 717-789-3227 Jim 301-739-4470

WINTACRE HOLSTEIN SALE

At the farm located 2 miles east of Sudlersville in Queen Anne's
Co., MD. From US 301 turn east on Rt. 300 and go through
Sudlersville. Farm is 2 miles on the right. Watch for farm sign.

SATURDAY, NOVEMBER 17, 1984
11:00 A.M.

94 REGISTERED HOLSTEINS 94
85 Cows-6 Bred Heifers-3 Bulls
OUTSTANDING PRODUCTION

9 sell from 25,000M to 30,920M 6 sell from 900 to 1113F
16 sell from 20,000M to 25,000M 20 sell from 700 to 900F
22 sell from 17,000M to 20,000M 37 milking, with 1st or 2nd calf
3 EX-25 VG and GP Selling

Featuring this EX Elevation
WINTACRE RORAE DULSI-EX
4-8 349d 17,700 4.3 756

Due in December to S-W-D Valiant Dam a VG Ivanhoe Star with 24,140M and
818F Gr'dam is a VG-87 Kingpin

ALSO SELLING

Wintacre Job Candy	4-2	365	30,920	3 4	1086
Wintacre Toronado Doris	6-10	365	25,830	3 7	949
Wintacre RORAE Hilda	5-7	365	24,760	3 7	919
F-Q Wintacre Jet Jackie	3-3	365	19,680	4 5	882
Lynthwaite FBK Inga Ingrid	3-11	365	25,970	3 4	895
Wintacre Star Delores	5-7	365	23,990	3 7	882
Wintacre Ivan Star Ripple	3-1	359	21,550	4 0	859
Wintacre Job Goose	3-10	351	19,390	4 1	809
Wintacre RORAE Jill (EX)	4-10	365	21,590	3 3	712
Wintacre RORAE Gale	4-0	365	17,000	3 7	632

Popular AI sires have been used such as Valiant, Chairman, Jet Stream, Bell,
Saul, Stewart and others.

NOTE: The Wintacre herd has consistently ranked near or at the top of the
list for herd average on the Kent County DHI program. They have also
ranked as high as third in the state of Md. with an average of 18,168M and
659F. A proven high producing herd with a large number recently fresh and
in full flow of milk or due within 30 days.

Pregnancy Examined Tested for Interstate
For Catalogs Contact:

Owner
WILLIAM L. WINTERSTEIN
Wintacre Farm
Box 127
Sudlersville, MD 21668
Ph. 301-438-3601

Sales Manager
REMSBURG SALE SERVICE
P.O. Box 177
Jefferson, MD 21755
Ph. 301-473-8214

BERKSHIRE EASTERN FALL CLASSIC

Held in conjunction with the Keystone International Livestock Exposition Harrisburg,
Pennsylvania.

BERKSHIRE BOAR AND GILT SHOW AND SALE
TUESDAY, NOVEMBER 6, 1984

Show-2:30 p.m.
Judge: Gale Bressner

Sale-6:00 p.m.
Auctioneer: Harry Bachman

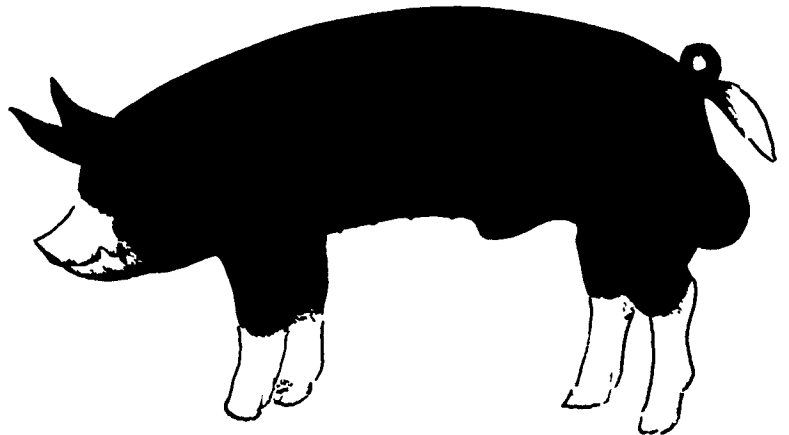
Sale Day Phone:(717)787-4160

SELLING

30 BOARS

Featuring boars and gilts from the Nation's leading herds. All hogs sell with Interstate Health
Papers, complete guarantees, and represents the richest bloodlines in the swine industry.

50 GILTS (SOME BRED)



**SELLING MODERN BERKSHIRES THAT ARE SUPERIOR IN
GROWTH, LENGTH, PRODUCTIVITY,
CARCASS QUALITY, AND
CONFINEMENT ADAPTABILITY**

AMERICAN BERKSHIRE ASSOCIATION
P.O. Box 747
Lebanon, Indiana 46052
(317) 482-3043
Jack Wall, Secretary
Conference Headquarters: Red Roof Inn North,
Harrisburg, PA (717) 657-1445

LOCAL COORDINATOR
Harry Bachman
138 College Avenue
Annville, Pennsylvania
(717) 867-1809