

Pork Producer insurance offered

HARTFORD, Ct. — Finally, confinement-system hog producers can help protect themselves against catastrophic losses with a new, comprehensive insurance plan created by The Travelers Companies.

Available nationally, the Pork Producers insurance plan has won the endorsement of the National SPF Swine Accrediting Agency, Inc., a national, organization that provides sales assistance and accreditation to hog farmers who have healthy swine.

The Pork Producers plan offers broad livestock coverage, that pays farmers for the death of their hogs by fire, storms, collapsing buildings and vehicular accidents. Producers also may buy extra protection to pay them for hogs lost to theft, dog-attacks, plus accidental shootings and drownings.

In addition to normal livestock coverage, the Pork Producers plan

features protection for hog suffocation. This option replaces the cash-market value of each insured hog — from piglets to feeder hogs — in the event of suffocation.

Travelers plan also offers the incentive of dividends. Depending on the plan's loss experience, Travelers may return to participating farmers a portion of their premiums in the form of a dividend.

The Pork Producers plan also provides property and liability coverage for producers' farms and homes. The plan's property coverage offers farmers insurance protection for their buildings in case of fire, vandalism, hailstorms and a variety of natural catastrophes. Similarly, the liability portion offers them insurance protection when they are faced with lawsuits or claims that they may be legally obligated to pay.

How to store tomatoes

NEWARK, Del. — Home gardeners with fruit-laden tomato plants always dread that first fall frost. All those lovely tomatoes lost before they had a chance to ripen! But with special care, that needn't happen, says University of Delaware extension garden specialist Dave Tatnall. Properly handled, tomatoes will ripen off the vine and keep for up to six weeks. Here's what to do.

Pick undamaged fruits just before the first frost. Wash them and let them dry before storing, separating partly ripe tomatoes

from green ones.

Pack the tomatoes one or two layers deep in shallow boxes or trays and place them in a dry basement or reasonably cool room with subdued light.

Examine the stored tomatoes every five to seven days, separate fruits that show red, and use them first. Discard any that start to decay. With luck, you could still be enjoying homegrown tomatoes well into November. Tatnall says one variety known for its ability to store well is Burpee's Long-Keeper.

Deere combines

(Continued from Page D6)

option. This instantly alerts the operator when the combine is performing at less than maximum capacity, allowing the operator to make adjustments for faster, more efficient operation.

Optional Dial-A-Matic header height control automatically maintains low cutting height when working with flexible cutting platforms or row crop headers. This saves grain while harvesting crops growing on uneven ground.

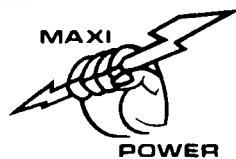
Wide-spaced dual wheels, an option on 7720 and 8820 Tital II models, allows wheels to be spaced so they run between 30-inch rows. While this is essential for harvesting crops planted by the increasingly popular ridge-till method, it offers advantages in any 30-inch crop in terms of improved tire life, greater floatation, reduced soil compaction, and a smoother ride.

The Sidehill 6620 Tital II combine

will have the feeder house reverser as standard equipment. It will also have a heavy duty rear axle which permits installation of 4-wheel drive.

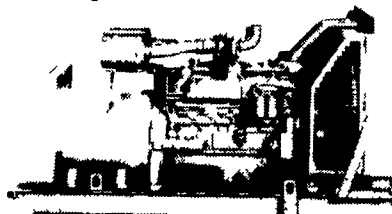
"We are the only company which specifically addresses harvest on sidehills," says Jasper, "and we continue to address this problem in the improved Tital II Sidehill 6620 combine."

John Deere Tital II combines will be available for the 1985 harvest season.



We Don't Claim To Build All

The Generator Sets Only The Best!



NEW - REBUILT USED - RENTALS

Maxi-Power Generator Systems, Inc.
330 Fonderwhite Rd.
Lebanon, PA 17042
(717) 274-1483

FARMERS: Don't Take A Chance On A Contaminated Well

PURIFY YOUR WATER WITH

SANITRON[™]
ULTRAVIOLET WATER PURIFIERS

- ECONOMICAL
- SAFE
- FAST • EASY
- AUTOMATIC
- NO CHEMICALS



ADVANTAGES OF THE SANITRON METHOD EFFECTIVE — All micro-organisms are susceptible to Sanitron disinfection. Effluent is guaranteed to exceed United States Public Health Standards for bacterial purity. EPA Approved.

Capacity: 1.5 gpm to 344 gpm
STAINLESS STEEL CONSTRUCTION

Call Or Write For Information:

JOHN BOMBERGER
216 So. Church St
Quarryville, PA 17566
(717) 786-4090

Snavelly's
the **OUTDOOR WOOD PLACE**
Wolmanized

Pressure-Treated Lumber

Wolmanized pressure-treated wood and Outdoor wood have built-in chemical protection that provides resistance to decay and termites. This material has been pressure-impregnated with Koppers Wolman[®] CCA wood preservative which meets or exceeds federal, state and industry specifications for this type of wood preservative. The chemicals are fixed in the wood and, although toxic to termites and fungi, they are not present in sufficient quantity to be toxic to animals.

CALL: 898-2241
OR 394-7277

J.C. Snavelly & Sons, Inc.

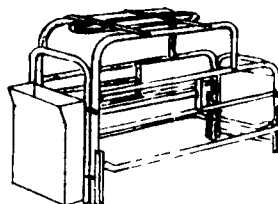
150 Main St.—Phone 898-2241
LANDISVILLE, PENNA.
351 W. James St.—Phone 394-7277
LANCASTER, PENNA.

Are You Ready To Go Whole Hog?
Try Hershey's Hog Systems!

- Breeding • Gestation • Farrowing
- Nursery • Growing • Finishing



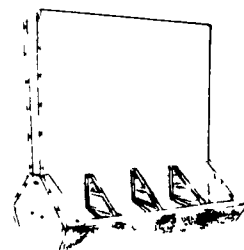
It takes a lot of planning, knowledge and experience to develop a profitable confinement operation. Hershey Equipment Co. will assist you in the planning and recommend the most efficient arrangement of equipment. This service we provide will blend the building and equipment together to form a practical, labor saving, economical hog system for top quality hogs.



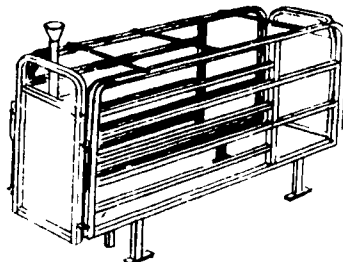
Farrowing Systems are designed with both the sow and farmer in mind

FARROWING

Nursery Systems include pig rearing cages or penning equipment



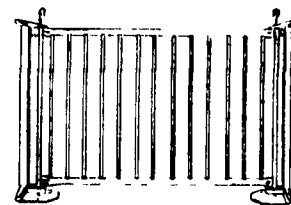
FEEDERS



Gestation Systems reduce stress and the opportunity for fighting

GESTATION

Finishing Systems are designed using top quality penning and feeders.



PENNING

WE HAVE YOUR SYSTEM: • WE PRICE IT RIGHT • WE INSTALL IT RIGHT
• WE BUILD IT RIGHT • WE SERVICE IT RIGHT



HERSHEY EQUIPMENT COMPANY, INC.

SYCAMORE IND PARK
255 PLANE TREE DRIVE
LANCASTER PA 17603
(717) 393 5807

Route 30 West at
the Center ville Exit

DESIGNERS OF QUALITY SYSTEMS FOR POULTRY, SWINE & GRAIN HANDLING.