

**HAY & FORAGE**

Used Snapper Heads for forage harvestors. JD 1 row, NH 1 row for 770 & 782, NH 2 row wide & narrow for 890 & 892. IH 743 narrow row corn head. Used forage wagons, AC, Grove, Gehl, NI, IHC, NH and Lamco. Used short hopper PTO blowers. Wood & steel bale racks, Gehl 900 side dump forage wagon, flail choppers, NH 38, JD 16A like new, IHC #8 very good, IHC, JD, AC, NH pickup heads, Hesston #10 stak hand very good, Hesston #30 stak hand & stak mover. Used 26' Hay & Grain Elevator with motor: NI corn pickers one & 2 row w/husking beds & shellers. USED HAY BALERS: NH 273, 276, 269, 275, JD 336, JD 346, Hesston 4500, IHC 425-most w/throwers. USED ROUND BALERS. Hesston (2) 5800's, NH 850, NH 846 auto wrap like new, Ford 552. USED FORAGE HARVESTERS: Hesston 720, 2000-100, 2000-150, NH Super 717, 770 & 880. Gehl 99 short hopper blower, very good. Used regrinder, blowers, shellers, & McKee corn hog.

**INDUSTRIAL**

AC HD3 Crawler Dozer, JD 350 B crawler dozer 6 way blade, Cat D4D dozer direct start. Used AC 840 articulated payloader, one & one-half yard bucket, Case 530 tractor loader backhoe, 615 Tractor Loader, JD 440 Log Skidder, AC 715 tractor loader backhoe, demo, AC 706D forklift 14' mast, JD 24A diesel skid steer loader, Bobcat skid steer loader, 610 gas & diesel, 520, NH 775 skid steer loader, Used 6 and 9 ton Tag Along trailers, 1 Ton Paving Roller.

**MANURE SPREADERS**

Better Bilt 1500 gal. liquid spreader, Ground drive 75 & 95 bushel, NI & Int'l. NI 213, 165 bushel manure spreaders w/wood side & floor avail. w/single beater or flail element. NI 206 95 bushel ground drive manure spreader. NI tandem 245 375 bushel manure spreader. JD 465 barrel hyd. slide top. Starline 830 Roto spreader hyd. top. Martin 3,000 gal. tandem liquid spreader.

**USED TRACTORS**

AC 7045 w/cab, 7040 w/cab, 7030 w/cab, 7000, 200 w/cab, 190XT w/cab, 160, 6060 w/loader, 5040 w/loader, D17 gas & diesel, D15, 170 w/loader, B, C, AC D12 w/fact. 3 pt. hitch. FORD 3600 D w/factory cab, 800, 600, 8N. MASSEY FERGUSON MF 275 w/cab, 175 D, 135, 35. JOHN DEERE 4020 diesel power shift, 3020 diesel, 2640, 2440, 720 diesel, wide front, 530. 3020D side console, 2510D. IHC Farmall 966 w/cab, radial tires, exc. condition, 706, 404 w/loader, 140 w/cultivator, Farmall 140 w/Loader, 100 high clearance, M, H, Super A w/highway sickle bar mower. 3 used Cubs w/belly mowers. KUBOTA 225 tractor w/cab.

**MISCELLANEOUS**

JD 1550 3 pt. no-til power seeder, like new. Wood saws, wood splitters, 3 pt. Farm log winches & 10' truck snow plow. Great Bend quick tach front end loader off Farmall 826, also fits various other tractors, Pick Stone Picker, AC, MF, JD, IHC Garden Tractors w/mowers, Dunham Lehr Loaders, GMC Power Unit w/PTO Clutch, JD and IH 2 row Potato Diggers, AC year round cab for AC 190 or 200, year round cab for JD 4020, NI 206 spreader like new, Bush Hog & Woods rotary mowers, dual wheels 34" and 38", Ford power units various sizes, Grove hyd. drive forage box, Starline silo unloader for 14' silo, like new, 6x20 Hay & Silage Feeder Wagons, 4x24 Hay Feeder Wagon.

**MARSHALL MACHINERY INC.**

5 Miles East of Honesdale, Pa.  
NE Corner of Pennsylvania Rte 652  
717-729-7117  
SALES & SERVICE  
for AC, KUBOTA, HESSTON,  
BRILLION, STARLINE, NEW IDEA

**GAS & DIESEL ENGINE REPAIR**

**LOMBARDINI** • Experience • Reasonable Rates

DIESELS SALES & SERVICE New & Used Gasoline & Diesel Engines



**Rebuilt Wisconsin Engines**

AEN 9 hp w/clutch or reduction THD 16.8 hp baler engine VF4 25 hp w/clutch or reduction VH4D 30 hp w/clutch or reduction VH4D 30 hp for skid loaders

VG4D 37 hp w/clutch or reduction VG4D 37 hp for haybine or skid loader

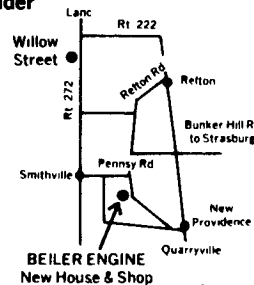
Guaranteed 1 Year



**BEILER ENGINE SERVICE**

245D PENNSY RD., NEW PROVIDENCE, PA

Check Our Prices While Supplies Last



**BERG "The Workhorse"**

Featuring the New Berg Split Chute

**Berg Barn Cleaners**

- \* Out Runs
- \* Out Lasts
- \* Out Cleans
- \* Out Performs
- \* Outstanding



Free 12" Thermometer With The Purchase Of A Barn Cleaner

**Robert Gutshall's**

R.D. #1, Box 212, Womelsdorf, PA 19567  
717-933-4616

**g-Industrial Equip. Co.**

ALLIS-CHALMERS NEW HOLLAND

**Winter Auction Dec. 1, 1984**  
**Watch For Listing**

**TRACTORS**

(2) AC 7060 PS  
AC 7040  
AC 7030  
AC WC  
MF 85 WF  
Case 970  
Case 930 w/Loader  
Case D  
JD 60  
JDB  
JD 2440 w/240 Loader  
IH 584 w/Loader  
IH 656 SOLD  
Case 2390  
Kubota B8200  
Ford 9 N w/Loader

**LAWN & GARDEN**

Kubota B6000 w/Loader  
(1) Gravely w/Mower  
(2) AC B-10  
AC Model B w/Cult. & 2 Bot-  
tom Plow  
AC B 208  
Simplicity 728  
Jacobsen GT-10  
AC 710 w/Mower  
AC HB 2 SOLD  
Cub w/Mower  
Ford LGT 120

**PLANTERS**

AC 710 w/Mower  
AC 600 4R  
AC 7R Bean  
AC 6 row w/Bean Units  
AC 600 6 Row

**COMBINES**

AC CII w/2 Hds.  
AC F330 Corn Hd.  
AC G440 Corn Hd.  
NH TR70 w/960 & 962W4  
NH TR70 w/13' Flex Hd. &  
962N6  
NH 970 Gr. Hd.

**MOWER CONDITIONERS**

(3) NH 1495 SP  
Case 955 Windrower  
Hesston 1014 Windrower  
Hydro S.  
Hesston 620 Windrower S.P.  
NH 495  
NH 489  
NH 478  
Cunningham

**FORAGE EQUIPMENT**

Hesston FA-7 Hd  
JD 5440 w/3 RN Head &  
WPU  
NH 1880 w/1895A & 919 N4  
(2) NH 822 C Hd  
(2) NH 770R2  
NH 919 A4  
NH 892 Harvester w/880  
WPU & Low Profile Head  
NH 890N3  
NH 880R2  
NH 880 WPU  
FQ 7600 w/3 RW, 4 RN &  
WPU

**MOWERS**

NH 462 Disc  
JD Side Mt.  
Bushhog Batwing  
Bushhog 7' 3 pt.  
JD 25A Flail  
Woods RM48  
Woods 5' Mid Mt.  
(2) IH Mower  
JD  
Mott Flail  
Ford Flails

**SPREADERS**

Badger 325 Tank  
Badger 230 Tank Liquid  
NH 518  
NH 367 Tank  
(2) NI 213's  
NH 791 Box  
Lely Fertz

**MISCELLANEOUS**

AC 5 Btm. 18" Plow  
NI 324 Super Sheller  
Brillion STS10 Transp. Har-  
row  
NH Straw Chopper  
NH Super 55 Rake  
Pequea 7' Tedder  
Brillion 10 ft. Cultipacker  
Lely Rotara  
Badger Elevator  
Kubota 1102 Engine  
Kubota EA600NB Engine  
NH 358 Grinder Mixer  
Moore Grain Drill No Til  
NH 85 Bale Handler Round  
Wisconsin TFD Engine  
Badger 98 Blower

**BALERS**

Hesston 4600  
(2) NH 278 w/58 Thrower  
NH 315 w/58 Thrower  
NH 268  
NH 310 w/70 Thrower

**LOADERS**

(2) NH 425  
NH 445 w/Deutz Diesel  
NH L775  
Schwartz

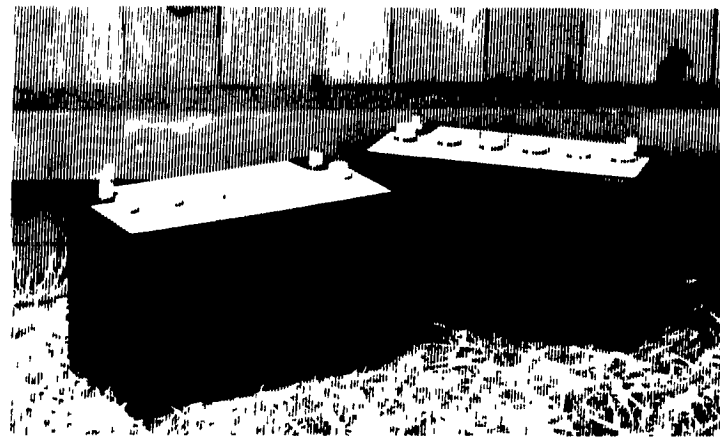
**WAGONS**

(3) NH 8 Crop  
Hesston 30A Stacker  
NH 1010 Bale  
(5) Bale w/Wood Sides on  
Running Gear,  
Flat w/Body

**BEST IN THE FIELD**

**PARIS**  
R.O.U.N.D.U.P

**Buy one battery at regular price**



**Get a second battery at 1/2 price**

See us today.  
Offer ends December 31.

**ZIMMERMAN'S FARM SERVICE**

Bethel, Pa. 717-933-4114



Call Ed Greenleaf, Sam Siple  
Service Call Terry Greenleaf  
1207 Telegraph Road, Rt 273 Rising Sun, Md  
301-658-5568 301-398-6132  
215-869-3542  
Immediate Financing  
Hours Mon thru Fri 8 to 6, Sat 8 to 3  
CLOSED SUNDAY