

**OUR READERS WRITE,
AND OTHER OPINIONS**

(Continued from Page A10)

I'm sure there are many farmers with more equipment all using leaded gas.

Will there be leaded gas available for farm use or will there be some kind of additive available to mix with the unleaded gas?

I think a great many of your readers would appreciate an article on the subject, so we might know better what is ahead.

Sincerely,

David W. Harry
Thornton, Pa.

PS. I hope we don't have to replace all our engines. That would be an awful setback.

CHOLESTEROL

Dear Editor:

The article on cholesterol in Lancaster Farming on Page B29 on Oct. 13, based on Claudia Holden's explanation of the functions of this substance in the body, is one of the most succinct and clear ones for the general reader that I have come across.

Perhaps, other contributions relating to essential substances in the body, as explained by Ms.

Holden, can be included in future editions of Lancaster Farming

Sincerely,

Charles F. Gross
Pa. Furnace

MANGELWURZERS

In your Oct. 20 issue on Page C6 you had an article titled "Grown any mangelwurzers lately" that has a Washington, D.C. address.

I found 2 or 3 items in the article of interest to me and I'd like to get more details. Who can I write to in order to obtain this greater depth?

Sincerely,

George Plitt
Happiness Hills Farms
Addison, N.Y.

Dear Mr. Plitt

The information on mangelwurzers came from the USDA.

For more information, write to

FARMLINE
Room 400, GHI Bldg.
USDA
Washington, D.C. 20250



GIGANTIC SELECTION
IN
Lancaster Farming's
CLASSIFIEDS

**Now is
the Time**

(Continued from Page A10)

causing considerable loss in grass production in our county.

The weed can easily be seen. It appears red all over, particularly the stems, in the fall. Touch the plant (careful, now!) and you will come in contact with the horrible spines. Grazing animals avoid it, 100%.

CONTROL. Spiny pigweed can easily be controlled by Banvel or 2, 4-D ester applied in late May and early June when in its seedling stage. A second herbicide application likely will be needed as a cleanup to get late germinating weed seeds. Mowing the pasture helps but the weeds will always recover.

Unless we soon obtain control of this bad weed, it will get into our hay fields, warns Arnold G. Lueck, Extension Agent, Agronomy.

Lancaster Poultry Assn.



Newly-named board members of Lancaster County Poultry Association include, from the left, Marlin Hershey, Galen Martin, Tim Hooper and Clair Eberly.

**GET YOUR BARN REALLY CLEAN
WITH HIGH PRESSURE,
HOT WATER CLEANING**

Now that the Avian Flu is behind us, our highly efficient Cleaning and Disinfecting Crew is available to do dairy barns and hog units. This highly trained crew has the equipment and know how to get the job done right.

Cost - \$35.00
per hour

50 cow barn
approximately \$150.00

Your Satisfaction Guaranteed



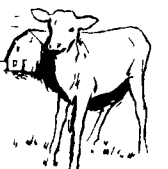
Call Toll Free
Pa. 1-800-732-0467 Md. 1-800-233-0202

pennfield feeds
Quality - Performance - Service

MARX BROS. MEATS, INC.



Purveyors of American
Veal & East Coast Lamb
Established 1895



We Encourage and Purchase 10 Week Old Calves At The Same Price Levels As 14 & 16 Week Old Calves. Of Course, We Also Purchase 14 & 16 Week Old Calves.

**CALL US FOR MORE INFORMATION
ON THIS PROGRAM**

(201) 747-0296

We Share Trucking Cost With Farmer




AgriPro™
AGRIPRO BRAND
HP-470

- Breakthrough yields.
- Fast dry down.
- Rapid emergence.
- Excellent standability.
- Good tolerance to drought stress.
- Excellent ear retention.

Call today!

P. L. ROHRER & BRO., INC.
SMOKETOWN, PA PH: 717-299-2571

and AgriPro are trademarks of Nickerson American Plant Breeders Inc., P.O. Box 2955, Mission, KS 66201. The Limitation of Warranty and Remedy on each bag of seed sold is part of the terms of the sale.