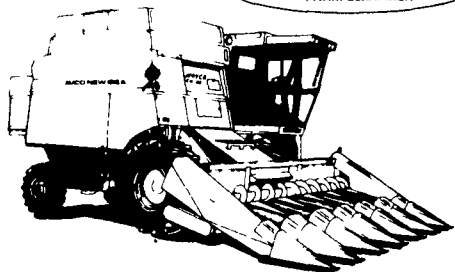


# W.F. WELLIVER

JERSEYTOWN, PA 17815

717-437-2430



NEW IDEA 802 Uni Tractor with power, assist, cab, air, 175 h.p. w/818 Combine; automatic height control & 840 feed house

Full list price w/freight **\$90,106**  
 SAVE **\$34,106**  
 OUR PRICE **\$56,000**

No Trade

Mr. Farmer:

There is little time left to purchase a new Corn Picker.

We have only (1) 325, 327 2 RN w/12 roll Husking Bed and (1) 323 1 R Corn Picker.

We Have The Program to Fit Your Needs  
 Interest of Waiver Until 5-1-85 or Extra Discounts or Special Finance Rate.

### USED UNI EQUIPMENT

- (2) 702 Dsl. Power Units w/Cabs
- (1) 701 Uni Power Unit w/Cab
- NI 729 Sheller **\$1,950** **\$1,000**
- 767 Super Chopper
- 730 4 RW C.H.
- (2) 713 S (Flex) Grain Platforms
- 763 3 RN C.H.
- (1) 723 2 RW C.H.
- (2) 725 3 RN C.H. **\$3,350** **\$2,400**
- 744 N 4 RN C.H. **\$3,390** **\$4,500**

### USED EQUIPMENT

- Glencoe 9 Shank Stretch Soil Saver
- Bushhog 9 Shank Soil Hog
- (2) Gehl 72B 6' Flail Chopper
- (1) JD 16A Flail Chopper
- Gehl MX 135 Grinder Mixer, Hydraulic Drive w/Digital Scales
- (1) Gehl MX 65 Grinder Mixer w/Fiberglass Tank
- Gehl 3510 Skid Loader (Demo)
- NI 244 Tandem Manure Spreader w/End Gate
- Wic 7 HP Straw Chopper, Used
- Starline Tank Spreader
- Ber Vac 3 pt. 8' Snow Blower
- Ford 3 pt. 2 Bottom Plow, Sharp
- IH 403 Combine w/Cab & 3 Row Wide WN C.H
- Lincoln 225 Amp Welder
- NI Model 300 2 Row Wide Corn Picker
- NI 325, 329, 2 RN w/Super Sheller
- NI 324 314 2 RW w/Sheller
- Glencoe 9 Shank Stretch Frame Soil Saver

**Just Traded**  
 NH 488 Windrower  
 NH Mod. 985 Combine w/Cab,  
 13' Grain Platform

See Us For Your Early Order Discount  
 On Purina 616 Wormer.

**Hesston 164**  
 Sale Model Tractors  
 NOW IN STOCK

Electric Wheel Model 5010,  
 12 Ton 8 Lug Running Gear  
 w/Adjustable Top FOB Fontana KD  
**\$1,175**

## Umberger's Of Fontana, Inc.

RD 4, Lebanon, PA (Fontana)  
 717-867-5161 or 717-867-2613  
 Mon.-Thurs.-7:30-5:00;  
 Fri.-7:30-8:00; Sat.-7:30-4:00

### FALL CLEARANCE SALE

- JD 4400 Dsl. Combine w/Corn Head & Grain Head
- JD 4230 Tractor
- JD 1450 5 Bottom Plow
- JD F145 5 Bottom Plow
- Hesston Stackhand 10
- Hesston 10W StackMover
- JD 3 Row Silage Head, 30"
- JD 1 Row C.H.
- AC Chuck Wagon
- JD 16A Flail Chopper
- JD 72" Mid Mount Mower for 2040 Tractor
- Meysers Side Plow For 620 JD Tractor
- V Plow for Loader

### WENGER IMPLEMENT, INC.

RD 1, Quarryville  
 Buck, PA 17566

717-284-4141

### BUYING A BEDDING CHOPPER? THEN CHECK THE BADGER BEDDING CHOPPER

#### EQUIPMENT FOR SALE OR LEASE

- BADGER**
- 3,350 gal. liquid manure tank
- 1,500 gal. and 2,300 gal. vacuum tank
- 210 & 330 Bushel Manure Spreader
- Lagoon Pump
- Lagoon Super Mixer
- Forage Wagons
- Forage Blowers
- Bedding Chopper for Mulching
- Handy High Pressure Washers
- Oswalt Mix Wagons
- Grain Drill with band seeder
- Post Hole Digger
- Also: Registered Holstein Bulls



### SHOW-EASE STALL CO.

573 Willow Rd. Lancaster, Pa.  
 Ph: 717-299-2536

### NEW TRACTORS

- JD 650 4WD
- JD 2350
- JD 2750
- JD 2950 MFWD & Cab
- JD 4050 RG, PS

### NEW EQUIPMENT

- JD 115 Disc 10 ft.
- JD 215 Dura-Cushion 11 ft. 5 in.
- JD 65 Rear Blade, 7 ft.
- JD 1610 Chisel Plow, 8 or 10 ft.
- JD 950 Roller Harrow, 12 ft.
- JD 1250, 4-18" Plow
- JD 415 Rotary Hoe
- JD 327 Baler w/30 Ejector
- JD 430 Round Baler
- JD 450 Hydra-Push Spreader
- JD 240 Loader w/73" Bucket
- JD 716A Forage Box
- JD 506 Rotary Cutter

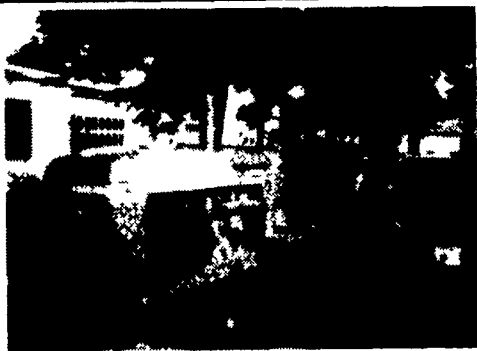
### USED EQUIPMENT

- IH 243 Picker Sheller
- NI Forage Blower
- JD 640 Rake w/Front Wheel
- JD F130 4-14" Bottom Plow
- JD "B" Tractor
- JD 2030 D Utility Tractor
- JD 24T Baler w/No. 2 Ejector
- JD 1209 Mower Cond.
- NH 495 12' Haybine
- (2) NH 479 Haybine
- Owatonna SP Mower Conditioner
- Row Crop Head 3 Row Wide
- AC 600 4 Row Liquid Planter
- JD Model 350 - 5 Bottom Plow
- JD 3-14" plows
- JD 216 Forage Box w/1065 Wagon
- JD 480 Mower-Conditioner
- JD 65 Rear Blade, 7 ft. like new

Grimm Hay Tedders  
 On Stock  
 Parts Available

50" Bale Bags  
 On Stock

Miller-Lake, Inc.  
 R.D. #2 Box 273A  
 Belleville, PA 17004  
 Ph. (717) 935-2335



4230 D Q-Trans. Tractor  
 5210 Hours  
 717-284-4141

### TRIPLE H EQUIPMENT

Peach Bottom, Pa.  
 717-548-3775 or 717-548-2094



### NEW VERMEER EQUIPMENT

- (1) 605H Baler
- (2) 504H Solid
- (3) 504G Baler
- (1) Hydraulic Drive Rock Picker
- (2) 10' No-Til Grain Drill
- (1) 23' Twin Rake
- (1) 256 Bale Buster
- JD Skid loader
- Owatonna 540 Stack Hand

### NEW VICON EQUIPMENT

- (14) KM 321 Mower Conditioner 10' 6"
- (2) KM 281 Mower Conditioner 9' 5"
- (1) KM 240 Mower Conditioner 7' 10"
- (4) CM 240 Mower 7' 10"
- (3) RC 300 and 330 Tedder-Rake
- (2) 16' Tedder
- (3) Vicon Square Baler
- (2) 600 lb. Spin Spreader
- (2) Large Round Baler 1200 and 1500 lbs.
- (2) Double V Rake
- (4) Single 4 wheel Rake
- (6) 100-500 gal. Sprayers w/elec. & manual controls

### USED EQUIPMENT

#### NEW EQUIPMENT SPECIALS

- JD 1610 Pull Type 11' Chisel Plow
- JD 1710A Pull Type 11' Mulch Tiller
- JD 2700 6 Bottom Spring Reset Plow
- JD 2600 5 Bottom Spring Reset Plow
- JD 1010 13' Field Cultivator
- JD 900 V-Ripper 7 Standard
- JD 27 Flail Shredder

### TRACTORS

- Oliver 1850 ..... Coming In
- IH 1066 ..... \$8,700
- JD 4440 w/SG, 500 hrs..... \$29,000
- JD 4020 w/PS, WF, Overhauled ..... \$12,900
- JD 2840
- IH M Diesel ..... \$ 1,000
- JD A ..... \$ 800
- IH 1400

**NOTICE:** Combines Below Will Be Reduced by \$1,000 Per Week Until Sold.  
 MF 750 Combine 2/6 Row Corn Head & Grain Head. **This Week \$19,000**  
 White 8900 Combine 2/6 Row Corn Head & Grain Head. **This Week \$20,000**

### COMBINES

- NH TR 70 w/6 Row Head ..... \$19,900
- JD 105 w/Heads ..... \$ 7,500
- 68 JD 45 ..... \$ 5,000
- MF 300 Massey w/heads ..... \$7,500

### PLANTERS

- JD 6 Row Consv. w/Dry Fert. .... \$ 8,500
- JD 4R MAX-EMERGE ..... \$ 4,500
- AC 6 Row #333 w/Notill Coulters ... \$ 5,500

### TILLAGE

- Ford Field Cultivator ..... \$ 1,750
- Brillion 10' Roller Harrow ..... \$ 1,100

### HARVESTING

- (1) Donahue 28' Implement carrier, like new ..... \$ 2,000
- (2) Gravity Wagons w/running gears
- IH 720 Harvester w/2 Heads ..... \$ 3,500
- NH 880 Harvester w/2 Row 30" Head ... \$ 2,500
- JD 38 Harvester w/3 heads ..... \$ 3,500
- JD 1209 Mower/Conditioner ..... \$ 3,500
- JD 38 w/2 Heads ..... \$ 2,500



### TOBIAS EQUIPMENT CO., INC.

Halifax, PA 17032  
 Phone: 717-362-3132

### FARM EQUIPMENT

#### SHULER EQUIPMENT SALES

RD #1 Box 228  
 Shuler Road  
 Shermansdale, Pa. 17090  
 717-882-4365 anytime  
**ACRES OF USED AND RECONDITIONED FARM EQUIPMENT AND TRACTORS**  
 Also  
**ACRES OF USED EQUIPMENT AND TRACTOR PARTS.**

**WE WILL BUY OR TRADE YOUR USED EQUIPMENT IN ANY CONDITION.**



### TRACTORS

- Case 430
- Oliver 500
- JD 2630
- White 2-105 Tractor
- Ford Jubilee
- IH 350 w/fast hitch

### LOADERS

- Case 1737 Skid Loader
- Case 1740 Skid Loader
- Case 1816 Skid Loader
- Case 1830 Skid Loader
- Case 450 Crawler Loader
- Case 450 Crawler Dozer
- Int 3200 Skid Loader

### TILLAGE

- JD 3 Bot 3-16 Plow
- 318 Spring Reset Plow
- Int 700 5-Bot 16" Plow
- Brady 13' Field Cult
- Case Disc Harrow, 10'
- Oliver 2 Bot Trailer Plows
- MF 3 Bot Plow
- Mohawk 7 Tooth Chisel Plows
- Case 18' Disk
- 3 Pt Disk
- Used Cultipacker

### HARVESTING EQUIPMENT

- Hesston 2000-150 Harvester
- Hesston Harvester Head-3 Row Wide
- Case 600 Combine w/3-Row Head
- NI Unisystem 702 Tractor, 702 Diesel, 710 Combine & 760 Harvester
- NI 709 Uni-System
- NI 316 Husker
- NI 315 Sheller
- NI 729A Sheller
- NI 727 Husking Bed
- NI 767 Super Chopper
- NI 743 Cornhead
- NI 323 1-Row Corn picker
- Case 300 Harvester
- NH 717 Harvester
- Gehl 1200 Harvester w/pickup and 2 row cornhead
- Oliver 73H 2 Row Cornpicker
- Int 234 Mounted Picker

### HAY EQUIPMENT

- MC 7 Ft Mower
- JD 1209 Windrower
- IH 1190 Windrower
- NH 479 Windrower
- Hesston PT 10
- Hesston 1090 Win drower
- 2 Bale Thrower Wagons
- Case Hay Rake
- Case 220 Baler w/Thrower
- NI Hay Rake
- NI 456 Round Baler

### MISCELLANEOUS

- IH 400 Corn Planter 8 Row
- 4 Row Cole Corn Planter
- 6 Used Spreaders
- NI 218 Spreader
- IH 275 Spreader
- Weaverline Cart 24 Bushel

### ZIMMERMAN'S FARM SERVICE

Bethel, PA  
 Phone 717-933-4114