



# Livestock market and auction news

## Virginia Auction Summary

October 18-24  
 Report supplied by VDA  
 Total of Va. Weekly Feeder Cattle Auction Receipts: 9,105.  
 TREND: Steady to \$2.00 lower.  
 South and Southwestern, Va.  
 Auction Summary  
 Smithfield, Southside  
 (Blackstone), Tri-State Narrows  
 Abingdon, Lynchburg, Hollins,  
 Witheville  
 October 18-24  
 STEERS: 300-500 lbs. Medium 1 57.50-68.50; Large 1 59.50-70.00; Small 1 50.00-61.50. 500-700 lbs. Medium 1 51.00-63.50; Large 1 52.00-64.00; Small 1 44.50-56.50. 700-1000 lbs. Medium 1 50.00-57.00; Large 1 52.00-56.00; Small 1 47.00-56.00.

HEIFERS: 300-500 lbs. Medium 1 40.00-52.50; Large 1 43.00-55.00; Small 1 37.50-47.25. 500-700 lbs. Medium 1 42.00-54.00; Large 1 43.00-49.50; Small 1 35.00-45.00. 700-900 lbs. Medium 1 42.00-51.50; Large 1 48.50; Small 1 40.00.

Northern Va.  
 Auction Summary  
 October 18-24  
 STEERS: 300-500 lbs. Medium 1 54.00-67.00; Large 1 58.50-66.00; Small 1 52.00-60.00. 500-700 lbs. Medium 1 52.00-64.00; Large 1 55.00-62.50; Small 1 49.50-57.00. 700-1000 lbs. Medium 1 50.00-61.00; Large 1 49.50-60.00.  
 HEIFERS: 300-500 lbs. Medium

1 37.00-48.50; Large 1 41.00-47.00; Small 1 36.25-42.00. 500-700 lbs. Medium 1 39.00-47.50; Large 1 42.00-48.50; Small 1 36.50-44.75. 700-900 lbs. Medium 1 42.00-49.00; Large 1 45.00-51.75.

## Shenandoah Valley Livestock

Harrisonburg, Va.  
 Saturday, October 20  
 Report supplied by auction  
 FEEDER CATTLE: Steers: 300-500 lbs. M&L-1 56.00-65.00, 1 lot at 67.50; 500-700 lbs. 54.00-66.25; 700-1000 lbs. 49.50-56.50; Holstein 300-1000 34.50-56.50. S-1&M&L-2 300-500 lbs. 49.00-56.50; 500-700 lbs. 50.00-55.50; 700-1000 lbs. 46.50-53.50.  
 FEEDER BULLS: M&L-1 300-500 lbs. 48.00-59.00; 500-700 lbs. 50.00-55.50; 700-1000 lbs. 39.50-47.00. S-1&M&L-2 300-500 lbs. 44.00-54.00; 500-700 lbs. 38.50-44.00; 700-1000 lbs. 42.00-43.50.

HEIFERS: M&L-1 300-500 lbs. 41.50-48.50; 500-700 lbs. 41.00-48.50, 1 lot at 53.00; 700-800 lbs. 42.00-49.00. S-1&M&L-2 300-500 lbs. 38.00-43.00; 500-700 lbs. 36.50-41.00; 700-800 lbs. 40.00-43.00.

STOCK COWS: Baby Calves 25.00-84.00, mostly 40.00-65.00.  
 SLAUGHTER CATTLE: Steers-Good 2-3 59.35-59.50.

SLAUGHTER COWS: Trend-Steady. Utility & Commercial 2-4 32.00-38.75; Canner & Cutters 25.00-31.50.

SLAUGHTER BULLS: 1&2 39.50-47.75.

LAMBS: High Choice & Prime 61.00; Choice 58.75; Feeder Lambs Choice 62.75-63.50; Slaughter Ewes 10.00-13.00.

HOGS: US 1-3 200-240 lbs. 44.25; Sows 1-3 42.00.

SLAUGHTER CALVES: Good & Choice 38.00-45.00.

## New Wilmington Livestock

N. Wilmington, Pa.  
 Monday, Oct. 22, 1984  
 Report Supplied by PDA  
 CATTLE 284. Compared with last Monday's market, slaughter cows fully steady. Few Choice slaughter steers 61.75-63.25, Good 53.00-60, Standard 47-52.75. Couple Choice slaughter heifers 59.50&60, few Good 50.50-57.50, Standard 43.00-50. Breaking Utility and Commercial slaughter cows 38-42.50, Cutter & Boning Utility 35-39.50, Canner & Low Cutter 31.00-36.00. Yield Grade No. 1 1280-1770 lbs. slaughter bulls 42.00-48, couple 48.75-49.25, #2 1190 lbs. at 41.50, 1480 lbs. at 41.00.

FEEDER CATTLE: Medium and Large Frame #1 300-540 lbs. feeder steers 48.50-55. Medium Frame #1 300-650 lbs. heifers 38.00-45.00.

CALVES 281. Vealers grading Good and Choice \$5 higher, Standard \$5-\$10 lower. Few Prime vealers 96.00-99, few Choice 90.00-96, few Good 70.00-80, Standard & Good 90-120 lbs. 47.50-57, 65-85 lbs. 38.00-50, Utility 50-130 lbs. 14.00-37.00.

FARM CALVES: Holstein Bulls 95-135 lbs. 58.00-80, few to 86; Lot Holstein Heifers 107 lbs. at 70.00.

HOGS 542. Barrows and gilts weak to 25 cents lower. US No. 1-2 2-240 lbs. barrows and gilts 43.50-44.30, No. 1-3 2-250 lbs. 41.85-43.10, few No. 1-3 175-185 lbs. 37.00-38.

Sows steady. US No. 1-3 3-720 lbs. sows 35.00-42.25. Boars 25.00-35.00.

FEEDER PIGS 44. US No. 1-3 15-30 lbs. feeder pigs 10.00-15 per head, 35-50 lbs. 16.00-26 per head.

SHEEP 56. High Choice & Prime 80-110 lb. woolled slaughter lambs 54.00-63, Choice 80-90 lbs. 52.00-55;; Good & Choice 60-85 lbs. feeder lambs 40.00-56. Slaughter ewes 8.00-12.00.

HOGS 176: Barrows & gilts. US No. 1-2 210-240 lbs. barrows & gilts 46.00-47.10, No. 1-3 210-240 lbs. 45.25-45.75, No. 2-3 200-260 lbs. 43.75-44.75, No. 2-3 170-185 lbs. 41.25-43.50. Sows: US No. 1-3 350-600 lbs. sows 46.25-49.25, No. 2-3 350-600 lbs. 41.25-45.25. Boars 29.25-31.00, Lightweights 31.50-33.00.

FEEDER PIGS 81: US No. 1-3 20-25 lbs. feeder pigs 12.00-18.00 per head, No. 1-3 30-35 lbs. 19.00-24.00, No. 1-3 40-50 lbs. 25.00-28.00 per head.

SHEEP 8: Choice 95-110 lbs. 56.00-61.00, Good 80-90 lbs. Wool slaughter lambs 46.00-54.00, Utility 60 lbs. one at 30.00. Slaughter Ewes 10.00-18.00.

GOATS 4: 14.00-28.00.

## Morrison Cove Livestock

Martinsburg, Pa.  
 Monday, Oct. 22  
 Report supplied by the auction  
 CATTLE 222: High Choice & Prime Slaughter Steers 61.00-63.00, Choice 58.25-60.75, Good 51.25-56.10, Standard 48.00-50.75, Utility 41.75-46.75. Choice Slaughter Heifers 58.25-61.75, Good 51.00-56.50, Standard 47.25-50.75, Utility 39.25-45.50. Breaking Utility & Commercial Slaughter cows 41.00-42.25, Commercial 38.00-40.50, Cutter & Boning Utility 34.25-36.75, Canner & Low Cutter 29.25-33.50, Shells down to 21.00. Choice Slaughter bullocks 50.25-52.75, Good 45.50-48.25, Standard 40.50-43.25, Utility 37.25-39.50. Yield Grade No. 1 Slaughter Bulls, 50.25-53.25, Yield Grade No. 2 48.25-49.75.

FEEDER CATTLE: Steers Choice 350-600 lbs. 53.00-58.00, Good 350-600 lbs. 46.00-51.00, Medium 350-600 lbs. 39.00-44.00. Heifers Good 300-600 lbs. 46.00-54.00, Medium 300-600 lbs. 38.00-45.00, Bulls Good 350-700 lbs. 50.50-54.00, Medium 350-700 lbs. 43.25-48.00.

CALVES 412: Prime Vealers 81.00-88.00. Choice 71.00-78.00, Good 61.00-68.00, Standard & Good 110-130 lbs. 60.00-64.00, 90-110 lbs. 56.00-59.00, 70-90 lbs. 54.00-55.50, Utility 40-60 lbs. 48.00-52.50.

FARM CALVES: Holstein bulls 90-130 lbs. 70.00-91.00, Holstein Heifers 95-115 lb. 61.00-68.00.

## New Holland Dairy

New Holland Sales Stables  
 Wednesday, October 24  
 Report supplied by auction  
 Reported receipts of 165 cows, 86 heifers, and 6 bulls.

Cow market steady; heifer market stronger.

Load of PA Fresh cows, 500.00-1050.00.  
 Load of Wisconsin Fresh cows, 800.00-1125.00.

Load of Canada Fresh cows, 650.00-1325.00; springers 585.00-975.00.

2 Loads of NY, Connecticut Fresh cows, 635.00-1275.00; springers 885.00-1475.00.

Load of PA Fresh cows, 710.00-925.00.

Herd of 21 head, all stages cows, 480.00-975.00.

Locally consigned cows 330.00-960.00.

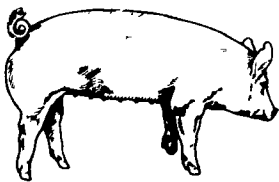
Springing heifers 550.00-885.00.  
 Open heifers 250.00-380.00.  
 Bulls 325.00-800.00.

## KING'S AUCTION, KIRKWOOD

Hay, Straw and Grain Auction  
 EVERY TUESDAY  
 12:00  
 Located Rt. 472 5 miles south of Quarryville or 6 miles north of Oxford at Shaub's Auction House.  
 Lloyd H. Kreider, Auctioneer  
 AU-000513L  
 No out of state checks  
 ALL TRUCKERS AND FARMERS WELCOME

## PEANUT HULLS

Bulk or Bagged  
 Prompt and Courteous Service  
**NAAMAN EBERLY**  
 Lancaster, PA  
 717-299-3001



## EMERY'S BUYING STATION

OPEN TO RECEIVE YOUR MARKET HOGS  
 AT THE GREEN DRAGON MARKET  
 RD 4, EPHRATA, PA 17522  
 1 MILE NORTH OF EPHRATA ON NORTH STATE STREET.  
 HOURS: MONDAY, TUESDAY, and WEDNESDAY 6:00 A.M. to 11:30 A.M.  
 215-458-5677 Residence  
 717-733-9648 Office

YOU ARE PAID FOR YOUR HOGS IMMEDIATELY

Ken & Lois Emery, Proprietors

## LOUIS LYONS & SON

Consign your cattle and hogs, feeder pigs & calves to Louis Lyons & Son. They offer choice service, excellent sorting & marketing of your livestock.

Charles Diller, Manager  
 Phone 394-7915  
 Burnell Siegrist - Buyer & Seller  
 Phone 626-8653

Experienced Personnel

Immediate Weighing



## GWALTNEY of SMITHFIELD, LTD.

We will receive your market hogs

Mondays, Wednesdays, Thursdays & Fridays

NOTE OUR WINTER HOURS  
 7 A.M. to 1 P.M.

Located at the Vintage Sales Stables, Paradise, PA

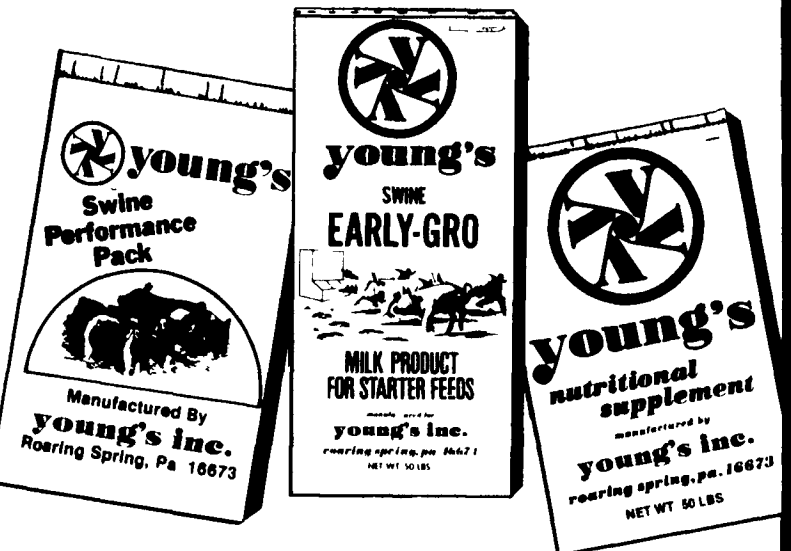
You will be paid immediately.

No commission or yard fees deducted.

Reduced waiting time.

Premium prices are paid for extra fancy hogs.

For Information Call  
**Ed Herrmann or Charlie Kauffman**  
 717-442-4742



## How Can Today's Pork Producer Afford The Best Swine Feed Supplements?

With feed costs running about 65% of the total production costs of swine, you can no longer afford to buy just any supplements. You need a well thought out feeding program, supported by high quality, economical products.

Young's swine feeding program uses time-tested products with proven results.

To be profitable, any pork producer needs the best in swine feed supplements so call your Young's representative today.

**young's**  
 Roaring Spring, Pa. 16673  
 Livestock Nutritional Services